

DATA SHEET

WIRELESS COMPONENTS

Low Pass Filter
LPF1608LL55R0709A

0.7-0.9 GHz
1608 Series



FEATURES

- Compact size design
- RoHS compliant

APPLICATIONS

- LTE(0.7-2.7GHz)

ORDERING INFORMATION

All part numbers are identified by the series, packing type, material, size, antenna type, working frequency and packing quantity.

PART NUMBER**LPF 1608 LL 55 R 0709A**

(1) (2) (3) (4) (5) (6)

(1) PRODUCT

LPF = Low Pass Filter

(2) SIZE

1608= 16 × 0.8

(3) MATERIALS

Material Code LL

(4) TYPE

55 = Type 55

(5) PACKING STYLE

R = Tape and Reel

(6) WORKING FREQUENCY

0709 = 0.7-0.9 GHz

SPECIFICATION

Table 1

DESCRIPTION	VALUE
Pass Band	698-960 MHz
Impedance	50Ω
Insertion Loss	0.60(Max) @ 698~830 MHz
	0.70(Max) @ 830~900 MHz
	0.75(Max) @ 900~915 MHz
	0.90(Max) @ 915~960 MHz
VSWR	1.6 (Max)
Attenuation	30dB Min @ 1554~1830 MHz
	35dB Min @ 2097~2745 MHz
Operating Temperature	-40 ~ 85 °C

DIMENSIONS

Table 2 Machinical Dimension

	DIMENSION
L (mm)	1.60 ±0.15
W (mm)	0.80 ±0.15
T (mm)	0.60 ±0.15
P1 (mm)	0.20 ±0.15
P2 (mm)	0.20 ±0.15
P3 (mm)	0.20 ±0.15
P4 (mm)	0.20 ±0.15
P5 (mm)	0.20 ±0.15
P6 (mm)	0.20 ±0.15
D1 (mm)	0.20 ±0.15
D2 (mm)	0.30 ±0.10
D3 (mm)	0.15 ±0.10

OUTLINES

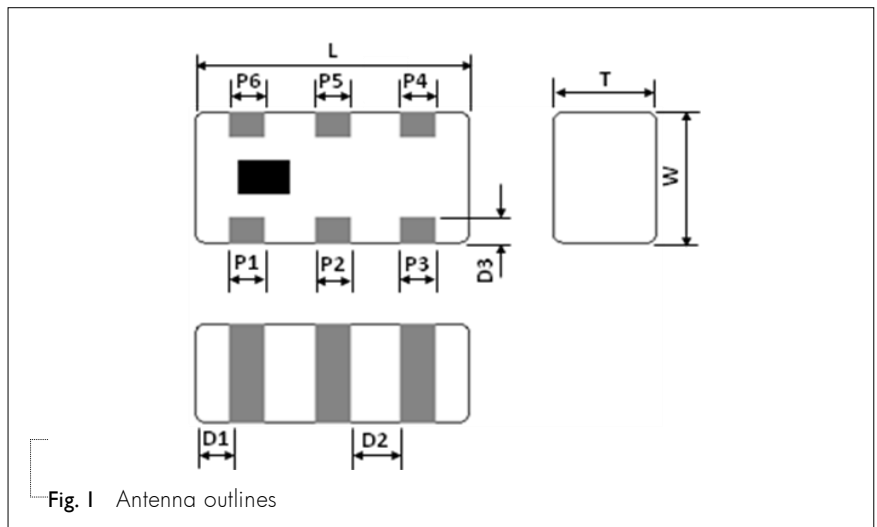
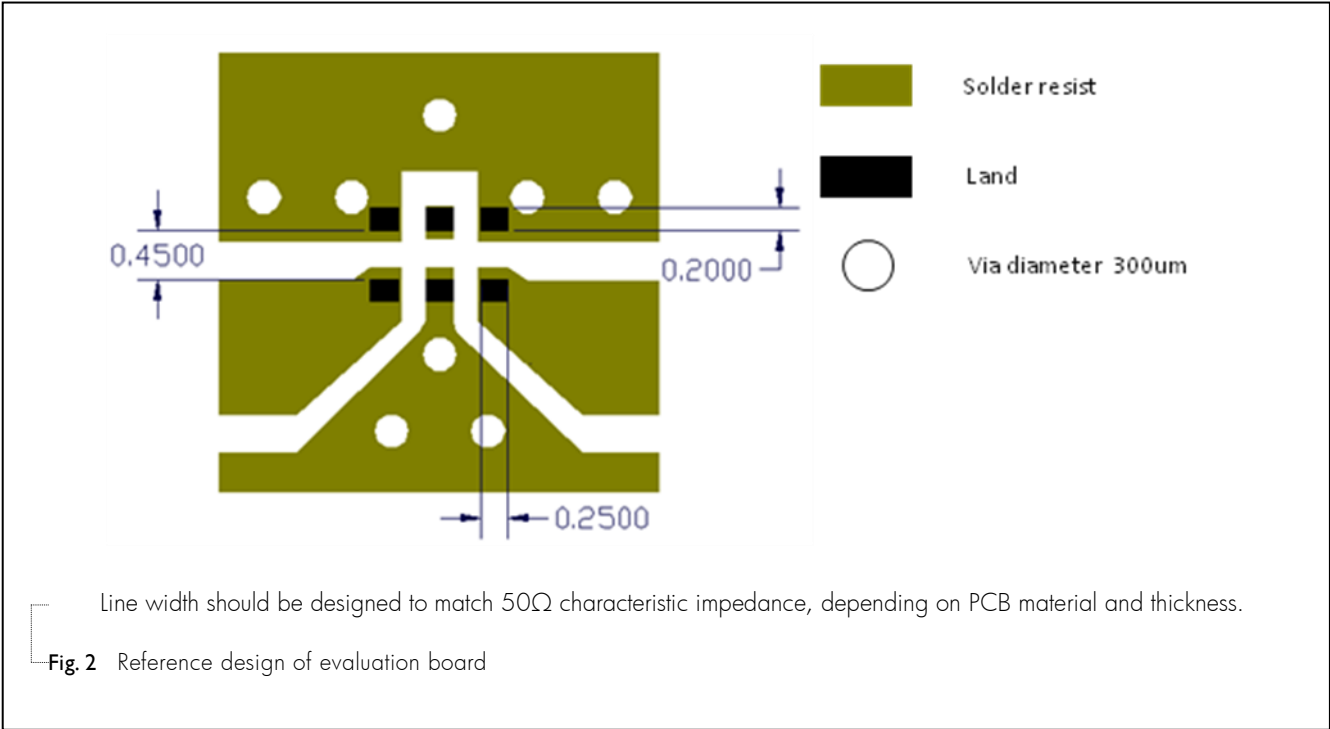
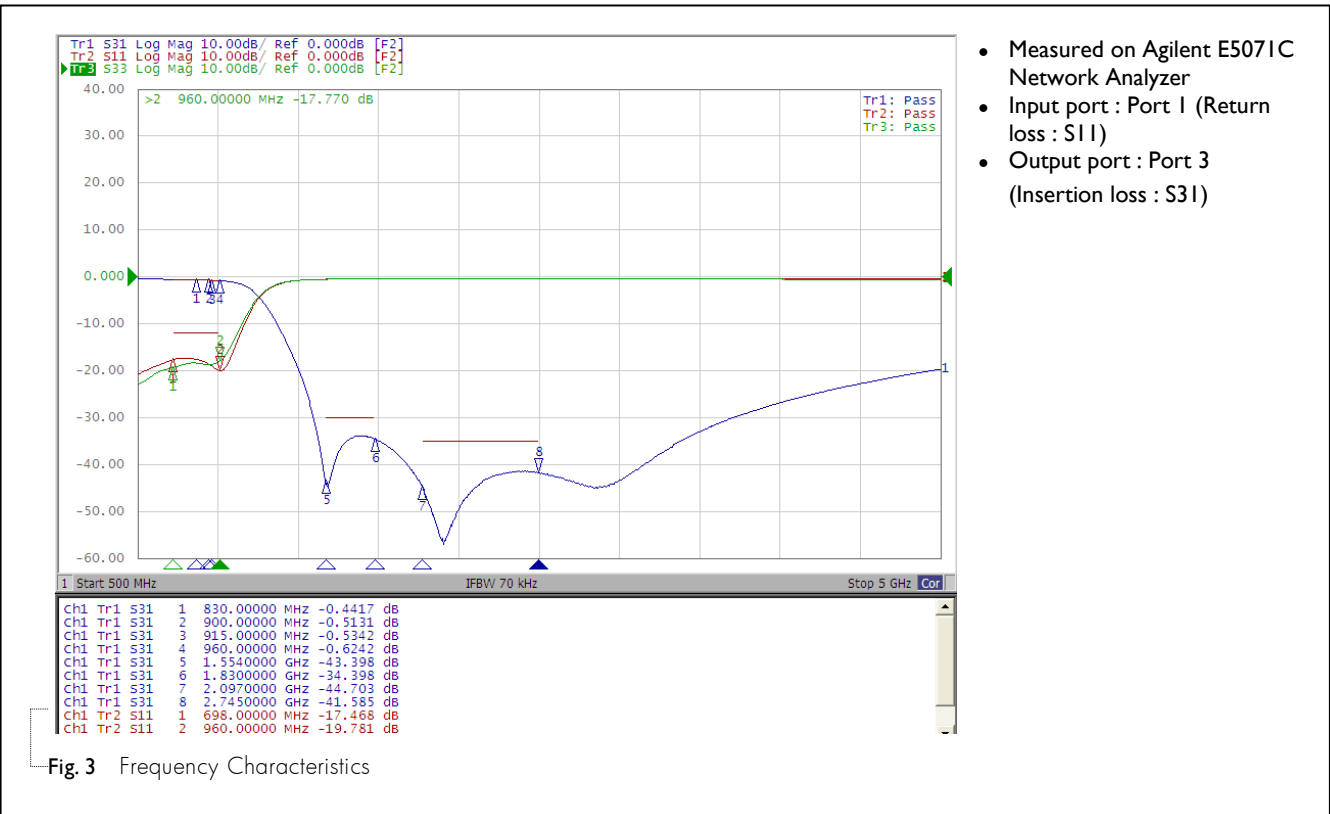


Table 3 Termination configuration

TERMINAL NAME	FUNCTION
P1	GND
P2	NC
P3	GND
P4	Output
P5	GND
P6	Input



ELECTRICAL PERFORMANCES



REVISION HISTORY

REVISION	DATE	CHANGE NOTIFICATION	DESCRIPTION
Version 0	Jul. 7, 2016	-	- New data sheet for Low Pass Filter, 0.7-0.9 GHz application, 1608 series
Version 1	Jan. 18, 2018		- Correct Dimension L