

# DATA SHEET

## WIRELESS COMPONENTS

Low Pass Filter  
LPF1608LL62R1719A

1.71-1.91 GHz  
1608 Series



FEATURES

- Compact size design
- RoHS compliant

APPLICATIONS

- LTE(0.7-2.7GHz)

ORDERING INFORMATION

All part numbers are identified by the series, packing type, material, size, antenna type, working frequency and packing quantity.

**PART NUMBER**

**LPF 1608 LL 62 R 1719A**

(1) (2) (3) (4) (5) (6)

---

**(1) PRODUCT**

LPF = Low Pass Filter

---

**(2) SIZE**

1608= 16 × 0.8

---

**(3) MATERIALS**

Material Code LL

---

**(4) TYPE**

62 = Type 62

---

**(5) PACKING STYLE**

R = Tape and Reel

---

**(6) WORKING FREQUENCY**

1719= 1.71 - 1.91 GHz

**SPECIFICATION**

Table 1

DESCRIPTION	VALUE
Pass Band	1710-1910 MHz
Impedance	50Ω
Insertion Loss	0.8 (Max) at 25°C
VSWR	2.0 (Max)
Attenuation	20dB Min @ 2400~2500 MHz 25dB Min @ 3700~3820 MHz
Operating Temperature	-40 ~ 85 °C

**DIMENSIONS**

Table 2 Machinical Dimension

	DIMENSION
L (mm)	1.60 ±0.15
W (mm)	0.80 ±0.15
T (mm)	0.60 ±0.15
P1 (mm)	0.20 ±0.15
P2 (mm)	0.20 ±0.15
P3 (mm)	0.20 ±0.15
P4 (mm)	0.20 ±0.15
P5 (mm)	0.20 ±0.15
P6 (mm)	0.20 ±0.15
D1 (mm)	0.20 ±0.15
D2 (mm)	0.30 ±0.10
D3 (mm)	0.15 ±0.10

**OUTLINES**

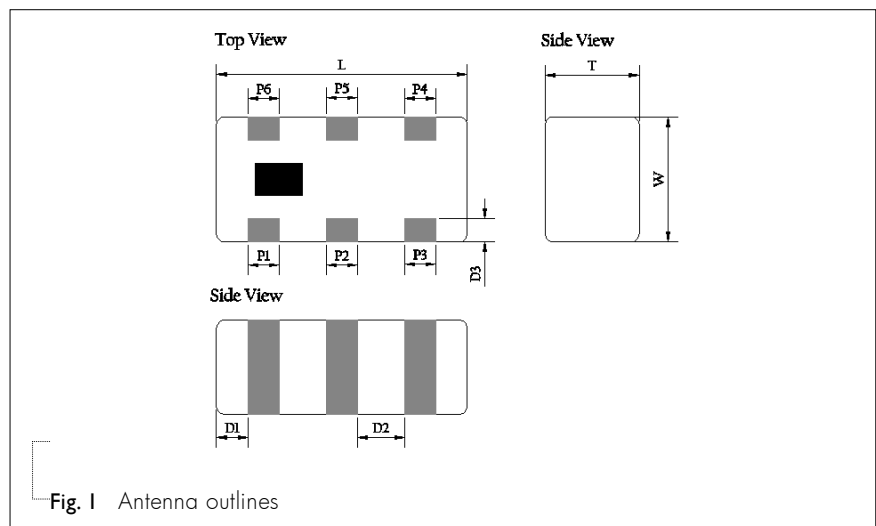
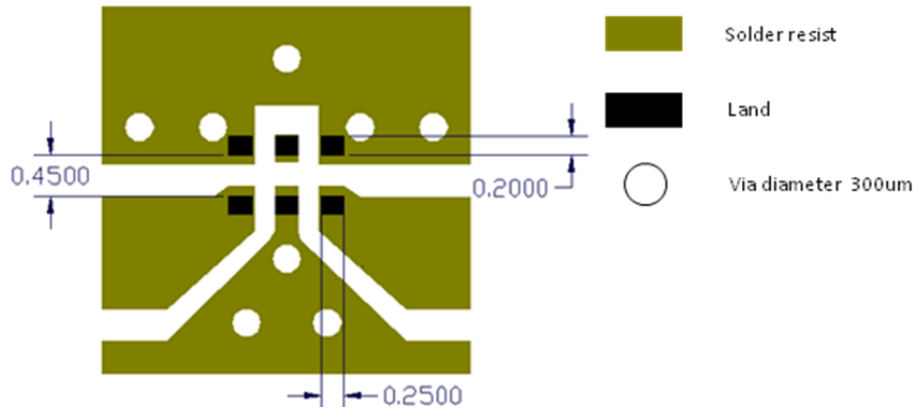


Table 3 Termination configuration

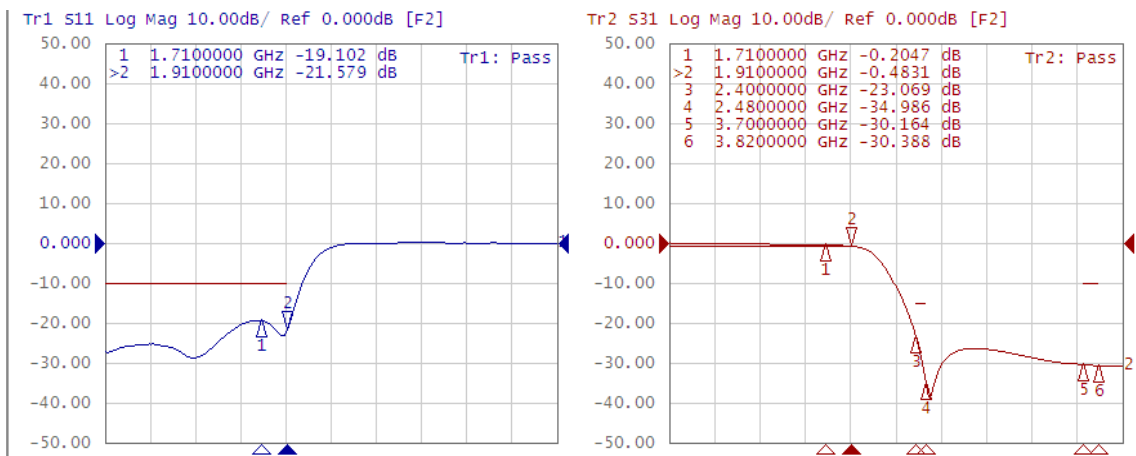
TERMINAL NAME	FUNCTION
P1	GND
P2	GND
P3	GND
P4	Output
P5	GND
P6	Input



Line width should be designed to match 50Ω characteristic impedance, depending on PCB material and thickness.

Fig. 2 Reference design of evaluation board

**ELECTRICAL PERFORMANCES**



Measured on Agilent E5071C Network Analyzer  
 Input port : Port 1 (Return loss : S11)  
 Output port : Port 2 (Insertion loss : S21)

Fig. 3 Frequency Characteristics

**REVISION HISTORY**

REVISION	DATE	CHANGE NOTIFICATION	DESCRIPTION
Version 0	Jul. 13, 2016	-	- New data sheet for Low Pass Filter, 1.71-1.91 GHz application, 1608 series
Version 1	Jan. 18, 2018		- Correct Dimension L