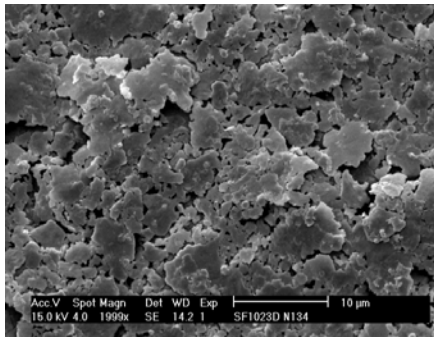


片状银粉

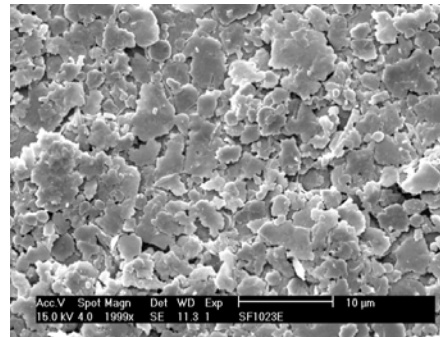
- 银白色或灰色粉末，适用于电子浆料中的导电相
- 片状化好，分散性好，粒度分布集中，纯度高
- 空气气氛下烧结或低温固化

理化性能:

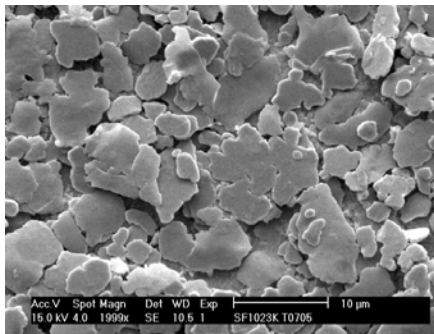
型号	振实密度 g/cm ³	比表面积 m ² /g	粒度分布 μm			杂质 总量 ppm
			D ₁₀	D ₅₀	D ₉₀	
SF1023D	≤ 2.5	0.8~1.4	≤ 4.0	≤ 12.0	≤ 25.0	< 150
SF1023E	1.5~2.6	0.7~1.3	≤ 2.5	≤ 7.5	≤ 16.0	< 150
SF1023H	2.0~3.5	0.8~1.4	≤ 2.0	≤ 5.0	≤ 10.0	< 150
SF1023K	2.0~3.6	0.5~0.8	2.0~4.0	5.0~9.0	10~18	< 150



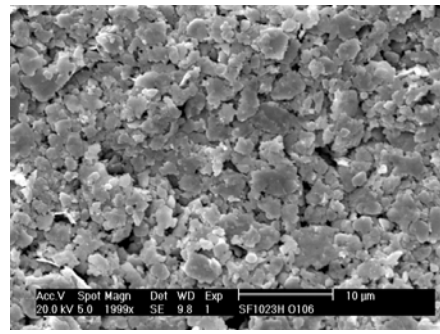
SF1023D



SF1023E

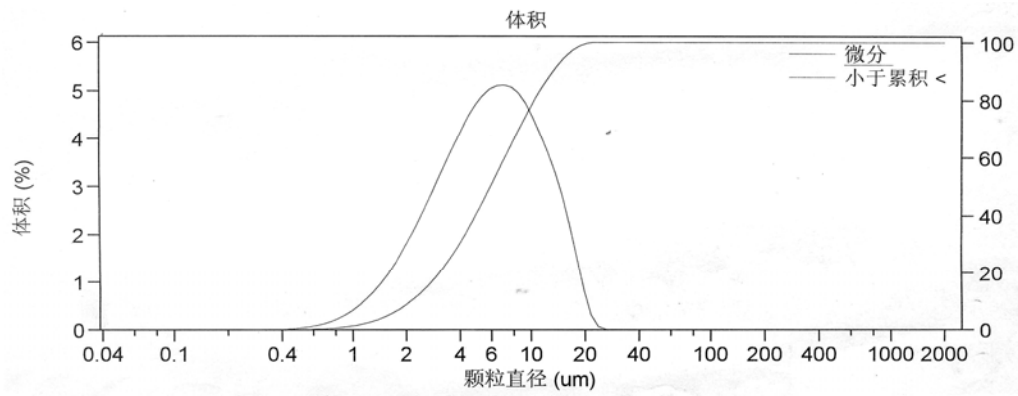


SF1023K



SF1023H

FENGHUA ADVANCED TECHNOLOGY(HOLDING) CO.,LTD
ELECTRONIC ENGINEERING R&D BRANCH

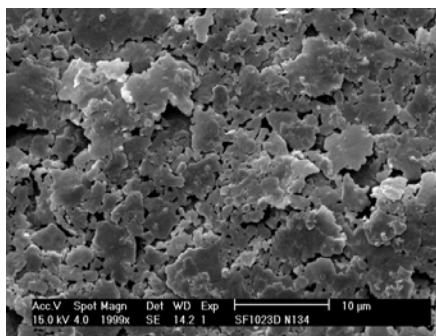


Silver Flake

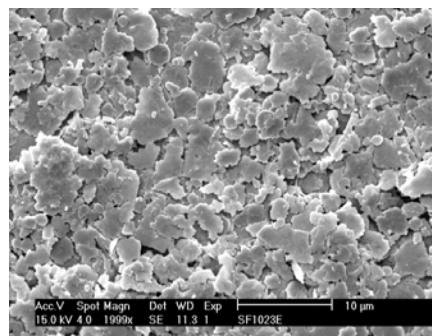
- The conductive phase conductive ink.
- Flake,good dispersion and concentrated particle size and high purity.
- Air atmosphere sintering or curing at low temperature.

TYPICAL PROPERTIES:

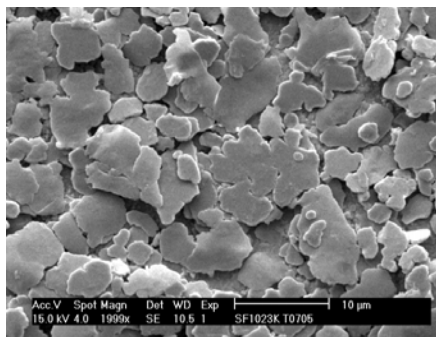
Product No.	TAP DENSITY g/cm ³	SURFACE AREA m ² /g	DISTRIBUTION OF PARTICLE SIZE (μm)			Total impurities ppm
			D ₁₀	D ₅₀	D ₉₀	
SF1023D	≤ 2.5	0.8 ~ 1.4	≤ 4.0	≤ 12.0	≤ 25.0	< 150
SF1023E	1.5 ~ 2.6	0.7 ~ 1.3	≤ 2.5	≤ 7.5	≤ 16.0	< 150
SF1023H	2.0 ~ 3.5	0.8 ~ 1.4	≤ 2.0	≤ 5.0	≤ 10.0	< 150
SF1023K	2.0 ~ 3.6	0.5 ~ 0.8	2.0 ~ 4.0	5.0 ~ 9.0	10 ~ 18	< 150



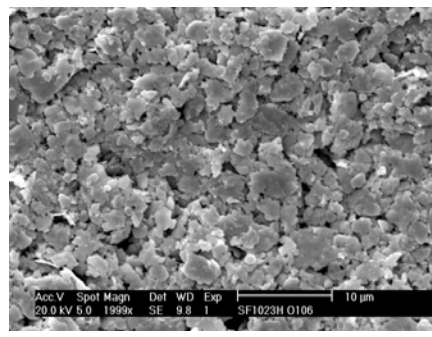
SF1023D



SF1023E



SF1023K



SF1023H

FENGHUA ADVANCED TECHNOLOGY(HOLDING) CO.,LTD
ELECTRONIC ENGINEERING R&D BRANCH

