

# MAC97 Series

Preferred Device

## Sensitive Gate Triacs

### Silicon Bidirectional Thyristors

Designed for use in solid state relays, MPU interface, TTL logic and any other light industrial or consumer application. Supplied in an inexpensive TO-92 package which is readily adaptable for use in automatic insertion equipment.

#### Features

- One-Piece, Injection-Molded Package
- Blocking Voltage to 600 Volts
- Sensitive Gate Triggering in Four Trigger Modes (Quadrants) for all possible Combinations of Trigger Sources, and especially for Circuits that Source Gate Drives
- All Diffused and Glassivated Junctions for Maximum Uniformity of Parameters and Reliability
- Pb-Free Packages are Available\*

#### MAXIMUM RATINGS (T<sub>J</sub> = 25°C unless otherwise noted)

| Rating  | Symbol                                 | Value             | Unit             |
|---|--|-------------------|------------------|
| Peak Repetitive Off-State Voltage<br>(T <sub>J</sub> = -40 to +110°C) (Note 1)<br>Sine Wave 50 to 60 Hz, Gate Open<br>MAC97A4<br>MAC97A6<br>MAC97A8 | V <sub>DRM</sub> ,<br>V <sub>RRM</sub> | 200<br>400<br>600 | V                |
| On-State RMS Current<br>Full Cycle Sine Wave 50 to 60 Hz<br>(T <sub>C</sub> = +50°C)  | I <sub>T(RMS)</sub>                    | 0.6               | A                |
| Peak Non-Repetitive Surge Current<br>One Full Cycle, Sine Wave 60 Hz<br>(T <sub>C</sub> = 110°C)  | I <sub>TSM</sub>                       | 8.0               | A                |
| Circuit Fusing Considerations (t = 8.3 ms)  | I <sup>2</sup> t                       | 0.26              | A <sup>2</sup> s |
| Peak Gate Voltage<br>(t ≤ 2.0 μs, T <sub>C</sub> = +80°C)   | V <sub>GM</sub>                        | 5.0               | V                |
| Peak Gate Power<br>(t ≤ 2.0 μs, T <sub>C</sub> = +80°C)   | P <sub>GM</sub>                        | 5.0               | W                |
| Average Gate Power<br>(T <sub>C</sub> = 80°C, t ≤ 8.3 ms)   | P <sub>G(AV)</sub>                     | 0.1               | W                |
| Peak Gate Current<br>(t ≤ 2.0 μs, T <sub>C</sub> = +80°C)   | I <sub>GM</sub>                        | 1.0               | A                |
| Operating Junction Temperature Range  | T <sub>J</sub>                         | -40 to +110       | °C               |
| Storage Temperature Range   | T <sub>stg</sub>                       | -40 to +150       | °C               |

Maximum ratings are those values beyond which device damage can occur. Maximum ratings applied to the device are individual stress limit values (not normal operating conditions) and are not valid simultaneously. If these limits are exceeded, device functional operation is not implied, damage may occur and reliability may be affected.

1. V<sub>DRM</sub> and V<sub>RRM</sub> for all types can be applied on a continuous basis. Blocking voltages shall not be tested with a constant current source such that the voltage ratings of the devices are exceeded.

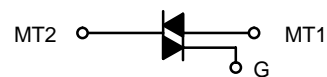
\*For additional information on our Pb-Free strategy and soldering details, please download the ON Semiconductor Soldering and Mounting Techniques Reference Manual, SOLDERRM/D.



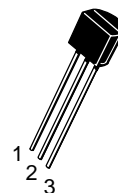
ON Semiconductor®

<http://onsemi.com>

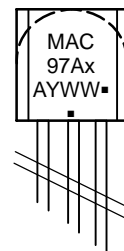
**TRIACS**  
**0.8 AMPERE RMS**  
**200 thru 600 VOLTS**



#### MARKING DIAGRAMS



TO-92 (TO-226AA)  
CASE 029  
STYLE 12



MAC97Ax = Device Code  
x = 4, 6, or 8  
A = Assembly Location  
Y = Year  
WW = Work Week  
▪ = Pb-Free Package

(Note: Microdot may be in either location)

#### PIN ASSIGNMENT

|   |                 |
|---|-----------------|
| 1 | Main Terminal 1 |
| 2 | Gate            |
| 3 | Main Terminal 2 |

#### ORDERING INFORMATION

See detailed ordering and shipping information in the package dimensions section on page 6 of this data sheet.

Preferred devices are recommended choices for future use and best overall value.

# MAC97 Series

## THERMAL CHARACTERISTICS

| Characteristic   | Symbol          | Max | Unit          |
|--|-----------------|-----|---------------|
| Thermal Resistance, Junction-to-Case                           | $R_{\theta JC}$ | 75  | $^{\circ}C/W$ |
| Thermal Resistance, Junction-to-Ambient                        | $R_{\theta JA}$ | 200 | $^{\circ}C/W$ |
| Maximum Lead Temperature for Soldering Purposes for 10 Seconds | $T_L$           | 260 | $^{\circ}C$   |

## ELECTRICAL CHARACTERISTICS ( $T_C = 25^{\circ}C$ unless otherwise noted; Electricals apply in both directions)

| Characteristic | Symbol | Min | Typ | Max | Unit |
|----------------|--------|-----|-----|-----|------|
|----------------|--------|-----|-----|-----|------|

### OFF CHARACTERISTICS

|   |                    |   |   |     |         |
|---|--------------------|---|---|-----|---------|
| Peak Repetitive Blocking Current<br>( $V_D = \text{Rated } V_{DRM}, V_{RRM}; \text{ Gate Open}$ ) | $I_{DRM}, I_{RRM}$ |   |   | 10  | $\mu A$ |
| $T_J = 25^{\circ}C$<br>$T_J = +110^{\circ}C$  |                    | - | - | 100 | $\mu A$ |

### ON CHARACTERISTICS

|  |          |     |     |     |         |
|--|----------|-----|-----|-----|---------|
| Peak On-State Voltage<br>( $I_{TM} = \pm .85 \text{ A Peak}; \text{ Pulse Width} \leq 2.0 \text{ ms}, \text{ Duty Cycle} \leq 2.0\%$ )               | $V_{TM}$ | -   | -   | 1.9 | V       |
| Gate Trigger Current (Continuous dc)<br>( $V_D = 12 \text{ Vdc}, R_L = 100 \Omega$ )<br>MT2(+), G(+)<br>MT2(+), G(-)<br>MT2(-), G(-)<br>MT2(-), G(+) | $I_{GT}$ | -   | -   | 5.0 | mA      |
|  |          | -   | -   | 5.0 |         |
|  |          | -   | -   | 5.0 |         |
|  |          | -   | -   | 7.0 |         |
| Gate Trigger Voltage (Continuous dc)<br>( $V_D = 12 \text{ Vdc}, R_L = 100 \Omega$ )<br>MT2(+), G(+)<br>MT2(+), G(-)<br>MT2(-), G(-)<br>MT2(-), G(+) | $V_{GT}$ | -   | .66 | 2.0 | V       |
|  |          | -   | .77 | 2.0 |         |
|  |          | -   | .84 | 2.0 |         |
|  |          | -   | .88 | 2.5 |         |
| Gate Non-Trigger Voltage<br>( $V_D = 12 \text{ V}, R_L = 100 \Omega, T_J = 110^{\circ}C$ )<br>All Four Quadrants                                     | $V_{GD}$ | 0.1 | -   | -   | V       |
| Holding Current<br>( $V_D = 12 \text{ Vdc}, \text{ Initiating Current} = 200 \text{ mA}, \text{ Gate Open}$ )  | $I_H$    | -   | 1.5 | 10  | mA      |
| Turn-On Time<br>( $V_D = \text{Rated } V_{DRM}, I_{TM} = 1.0 \text{ A pk}, I_G = 25 \text{ mA}$ )  | $t_{gt}$ | -   | 2.0 | -   | $\mu s$ |

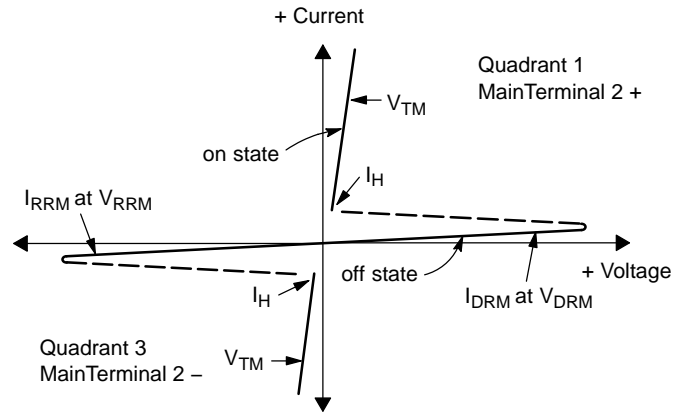
### DYNAMIC CHARACTERISTICS

|  |            |   |     |   |           |
|--|------------|---|-----|---|-----------|
| Critical Rate-of-Rise of Commutation Voltage<br>( $V_D = \text{Rated } V_{DRM}, I_{TM} = .84 \text{ A}, \text{ Commutating } di/dt = .3 \text{ A/ms}, \text{ Gate Unenergized}, T_C = 50^{\circ}C$ ) | $dV/dt(c)$ | - | 5.0 | - | $V/\mu s$ |
| Critical Rate of Rise of Off-State Voltage<br>( $V_D = \text{Rated } V_{DRM}, T_C = 110^{\circ}C, \text{ Gate Open}, \text{ Exponential Waveform}$ )   | $dv/dt$    | - | 25  | - | $V/\mu s$ |

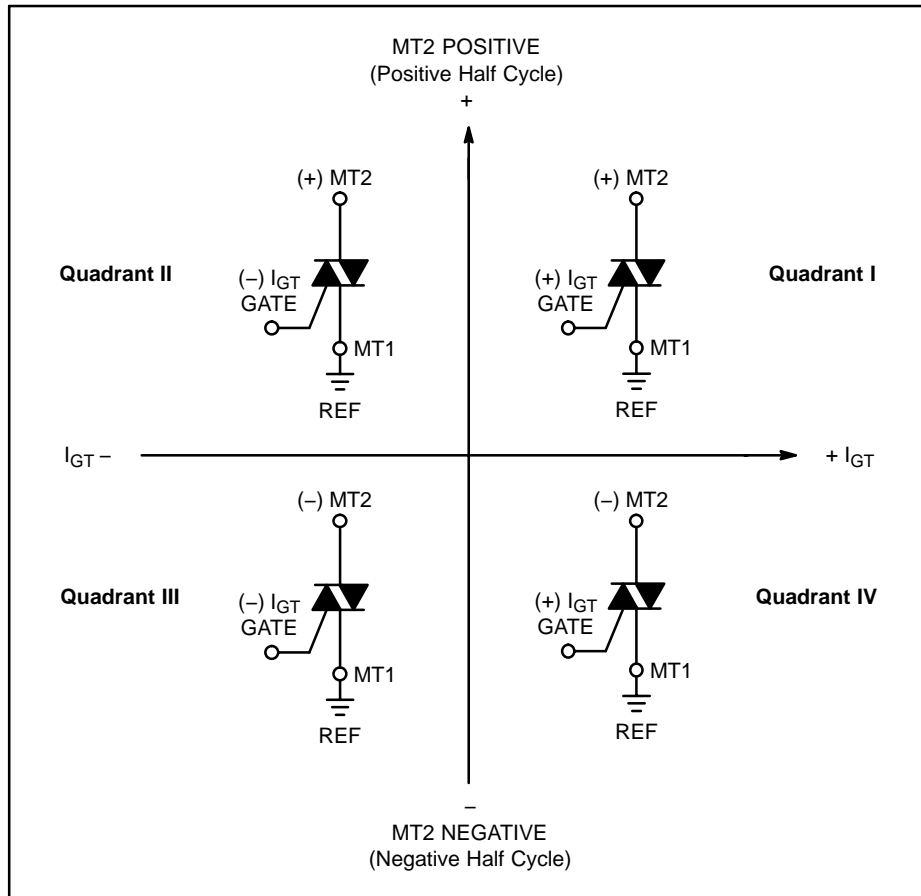
# MAC97 Series

## Voltage Current Characteristic of Triacs (Bidirectional Device)

| Symbol    | Parameter                                 |
|-----------|---|
| $V_{DRM}$ | Peak Repetitive Forward Off State Voltage |
| $I_{DRM}$ | Peak Forward Blocking Current             |
| $V_{RRM}$ | Peak Repetitive Reverse Off State Voltage |
| $I_{RRM}$ | Peak Reverse Blocking Current             |
| $V_{TM}$  | Maximum On State Voltage                  |
| $I_H$     | Holding Current                           |



### Quadrant Definitions for a Triac



All polarities are referenced to MT1.  
With in-phase signals (using standard AC lines) quadrants I and III are used.

# MAC97 Series

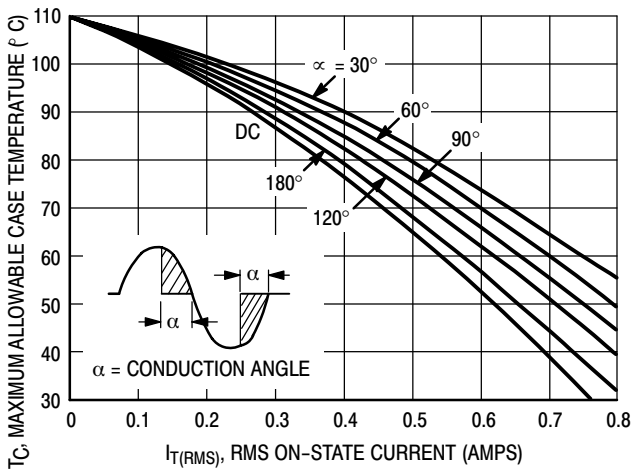


Figure 1. RMS Current Derating

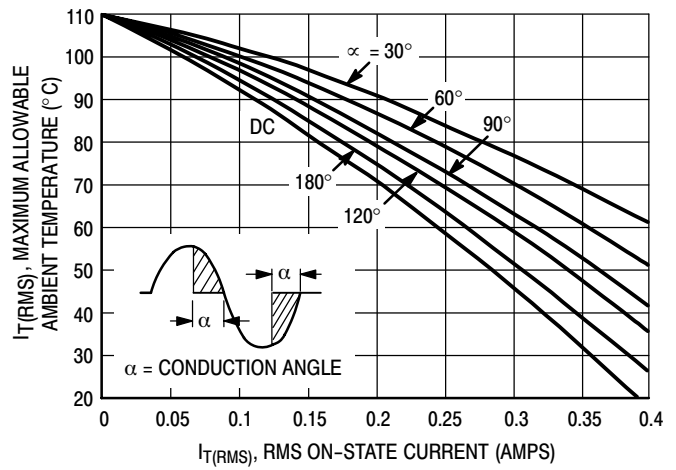


Figure 2. RMS Current Derating

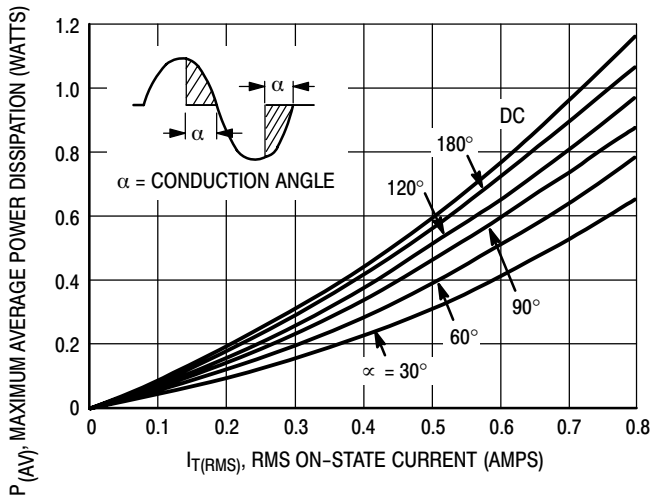


Figure 3. Power Dissipation

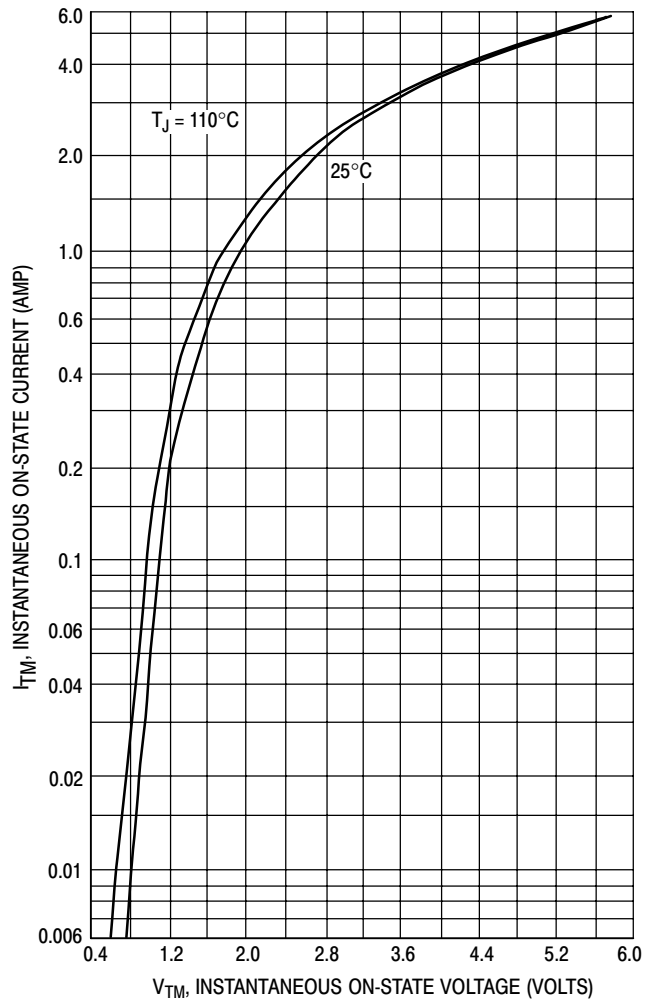


Figure 4. On-State Characteristics

# MAC97 Series

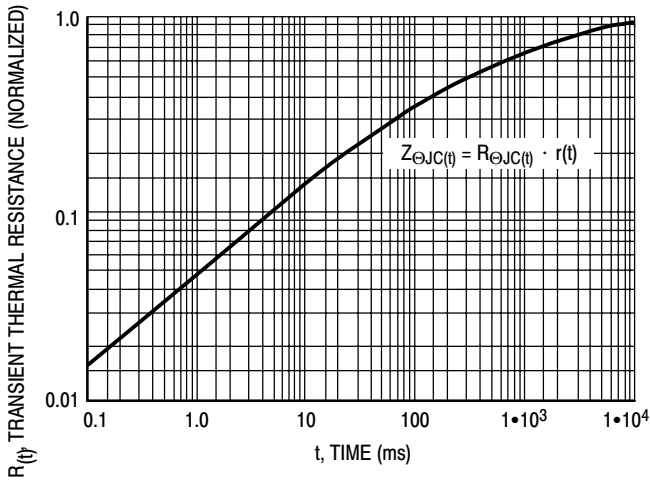


Figure 5. Transient Thermal Response

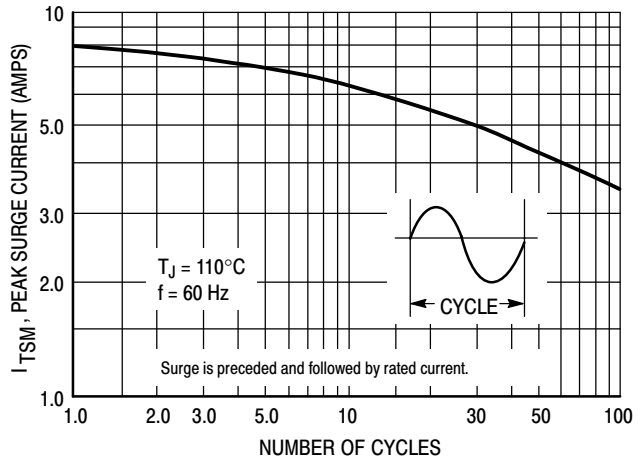


Figure 6. Maximum Allowable Surge Current

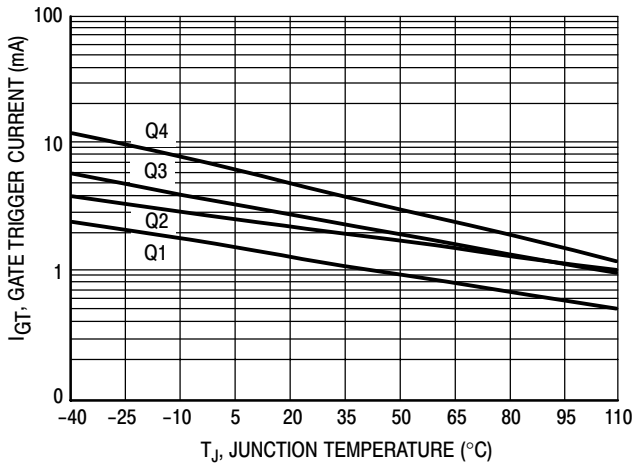


Figure 7. Typical Gate Trigger Current versus Junction Temperature

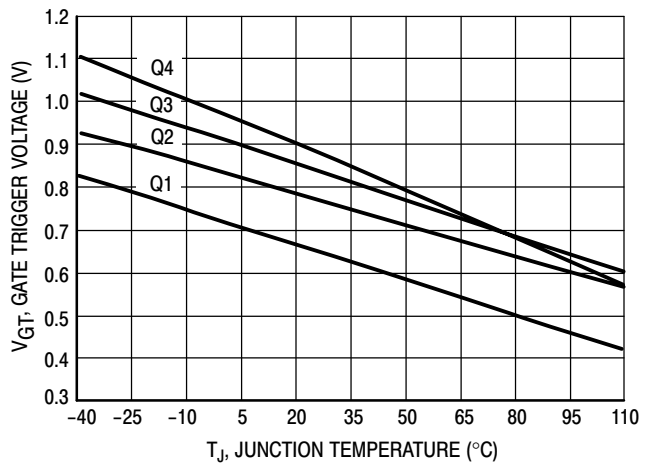


Figure 8. Typical Gate Trigger Voltage versus Junction Temperature

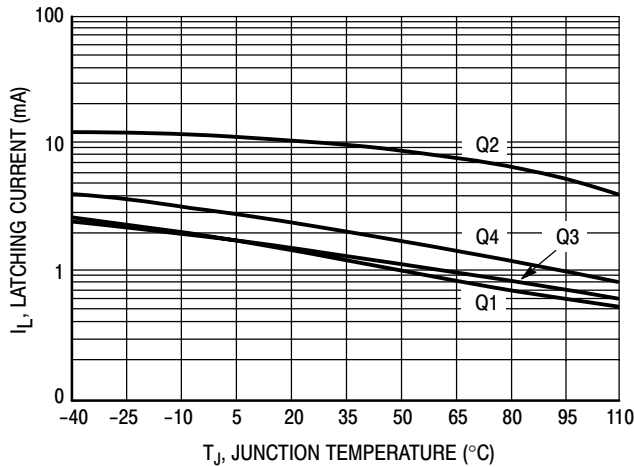


Figure 9. Typical Latching Current versus Junction Temperature

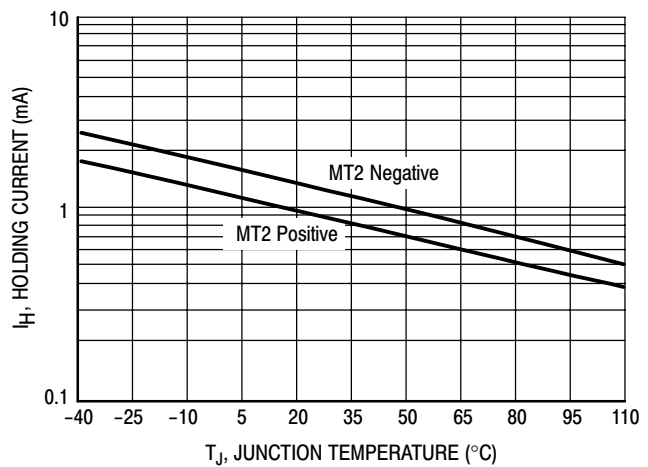
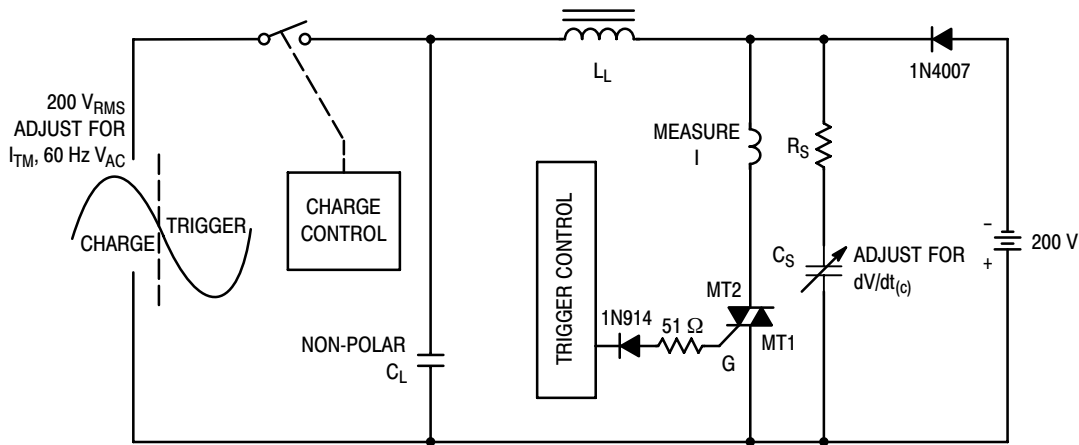


Figure 10. Typical Holding Current versus Junction Temperature

## MAC97 Series



Note: Component values are for verification of rated (dv/dt)<sub>c</sub>. See AN1048 for additional information.

**Figure 11. Simplified Test Circuit to Measure the Critical Rate of Rise of Commutating Voltage (dv/dt)<sub>c</sub>**

### ORDERING & SHIPPING INFORMATION

| U.S.         | Europe Equivalent | Shipping   | Description of TO92 Tape Orientation               |
|--------------|-------------------|--|--|
|              | MAC97A6RL1        | Radial Tape & Reel (2K/Reel)                     | Flat side of TO92 & adhesive tape visible          |
|              | MAC97A6RL1G       | Radial Tape & Reel (2K/Reel)<br>(Pb-Free)        | Flat side of TO92 & adhesive tape visible          |
| MAC97A8RLRM  | MAC97A8RL1        | Radial Tape & Reel (2K/Reel)                     | Flat side of TO92 & adhesive tape visible          |
| MAC97A8RLRMG | MAC97A8RL1G       | Radial Tape & Reel (2K/Reel)<br>(Pb-Free)        | Flat side of TO92 & adhesive tape visible          |
| MAC97A4      |                   | Bulk in Box (5K/Box)                             | N/A, Bulk  |
| MAC97A4G     |                   | Bulk in Box (5K/Box)<br>(Pb-Free)                | N/A, Bulk  |
| MAC97A6      |                   | Bulk in Box (5K/Box)                             | N/A, Bulk  |
| MAC97A6G     |                   | Bulk in Box (5K/Box)<br>(Pb-Free)                | N/A, Bulk  |
| MAC97A8      |                   | Bulk in Box (5K/Box)                             | N/A, Bulk  |
| MAC97A8G     |                   | Bulk in Box (5K/Box)<br>(Pb-Free)                | N/A, Bulk  |
| MAC97A6RLRF  |                   | Radial Tape & Reel (2K/Reel)                     | Round side of TO92 & adhesive tape on reverse side |
| MAC97A6RLRFG |                   | Radial Tape & Reel (2K/Reel)<br>(Pb-Free)        | Round side of TO92 & adhesive tape on reverse side |
| MAC97A6RLRP  |                   | Radial Tape & Reel (2K/Reel)                     | Round side of TO92 & adhesive tape on reverse side |
| MAC97A6RLRPG |                   | Radial Tape & Reel (2K/Reel)<br>(Pb-Free)        | Round side of TO92 & adhesive tape on reverse side |
| MAC97A8RLRP  |                   | Radial Tape / Fan Fold Box (2K/Box)              | Round side of TO92 & adhesive tape visible         |
| MAC97A8RLRPG |                   | Radial Tape / Fan Fold Box (2K/Box)<br>(Pb-Free) | Round side of TO92 & adhesive tape visible         |

†For information on tape and reel specifications, including part orientation and tape sizes, please refer to our Tape and Reel Packaging Specifications Brochure, BRD8011/D.

# MAC97 Series

## TO-92 EIA RADIAL TAPE IN FAN FOLD BOX OR ON REEL

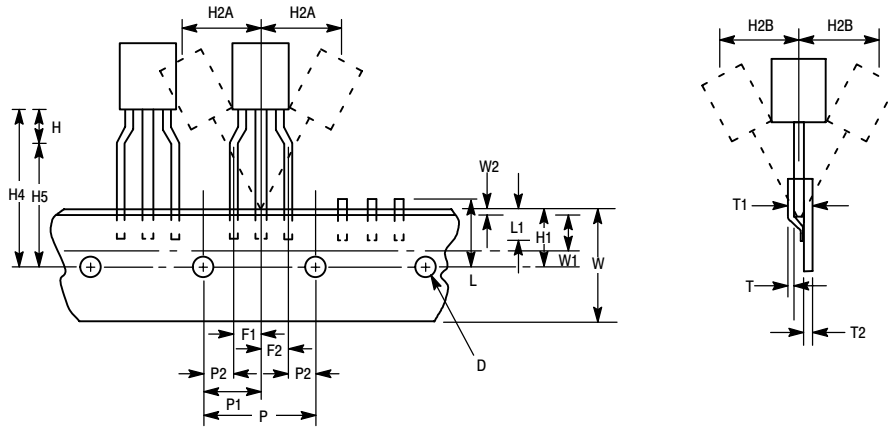


Figure 12. Device Positioning on Tape

| Symbol | Item                                 | Specification |         |            |      |
|--------|--------------------------------------|---------------|---------|------------|------|
|        |                                      | Inches        |         | Millimeter |      |
|        |                                      | Min           | Max     | Min        | Max  |
| D      | Tape Feedhole Diameter               | 0.1496        | 0.1653  | 3.8        | 4.2  |
| D2     | Component Lead Thickness Dimension   | 0.015         | 0.020   | 0.38       | 0.51 |
| F1, F2 | Component Lead Pitch                 | 0.0945        | 0.110   | 2.4        | 2.8  |
| H      | Bottom of Component to Seating Plane | .059          | 0.156   | 1.5        | 4.0  |
| H1     | Feedhole Location                    | 0.3346        | 0.3741  | 8.5        | 9.5  |
| H2A    | Deflection Left or Right             | 0             | 0.039   | 0          | 1.0  |
| H2B    | Deflection Front or Rear             | 0             | 0.051   | 0          | 1.0  |
| H4     | Feedhole to Bottom of Component      | 0.7086        | 0.768   | 18         | 19.5 |
| H5     | Feedhole to Seating Plane            | 0.610         | 0.649   | 15.5       | 16.5 |
| L      | Defective Unit Clipped Dimension     | 0.3346        | 0.433   | 8.5        | 11   |
| L1     | Lead Wire Enclosure                  | 0.09842       | –       | 2.5        | –    |
| P      | Feedhole Pitch                       | 0.4921        | 0.5079  | 12.5       | 12.9 |
| P1     | Feedhole Center to Center Lead       | 0.2342        | 0.2658  | 5.95       | 6.75 |
| P2     | First Lead Spacing Dimension         | 0.1397        | 0.1556  | 3.55       | 3.95 |
| T      | Adhesive Tape Thickness              | 0.06          | 0.08    | 0.15       | 0.20 |
| T1     | Overall Taped Package Thickness      | –             | 0.0567  | –          | 1.44 |
| T2     | Carrier Strip Thickness              | 0.014         | 0.027   | 0.35       | 0.65 |
| W      | Carrier Strip Width                  | 0.6889        | 0.7481  | 17.5       | 19   |
| W1     | Adhesive Tape Width                  | 0.2165        | 0.2841  | 5.5        | 6.3  |
| W2     | Adhesive Tape Position               | 0.0059        | 0.01968 | 0.15       | 0.5  |

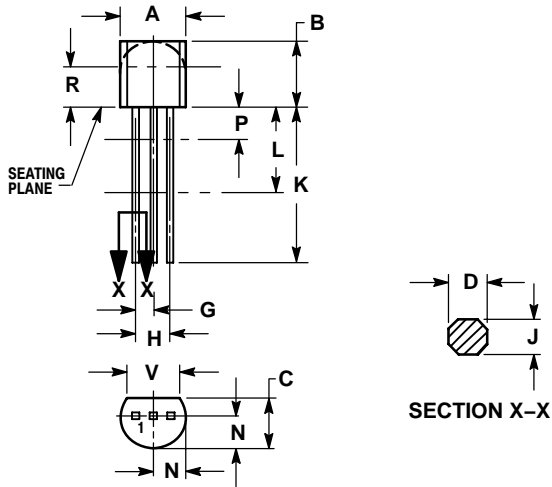
NOTES:

- Maximum alignment deviation between leads not to be greater than 0.2 mm.
- Defective components shall be clipped from the carrier tape such that the remaining protrusion (L) does not exceed a maximum of 11 mm.
- Component lead to tape adhesion must meet the pull test requirements.
- Maximum non-cumulative variation between tape feed holes shall not exceed 1 mm in 20 pitches.
- Holddown tape not to extend beyond the edge(s) of carrier tape and there shall be no exposure of adhesive.
- No more than 1 consecutive missing component is permitted.
- A tape trailer and leader, having at least three feed holes is required before the first and after the last component.
- Splices will not interfere with the sprocket feed holes.

# MAC97 Series

## PACKAGE DIMENSIONS

TO-92 (TO-226AA)  
CASE 029-11  
ISSUE AL



### NOTES:

1. DIMENSIONING AND TOLERANCING PER ANSI Y14.5M, 1982.
2. CONTROLLING DIMENSION: INCH.
3. CONTOUR OF PACKAGE BEYOND DIMENSION R IS UNCONTROLLED.
4. LEAD DIMENSION IS UNCONTROLLED IN P AND BEYOND DIMENSION K MINIMUM.

| DIM | INCHES |       | MILLIMETERS |       |
|-----|--------|-------|-------------|-------|
|     | MIN    | MAX   | MIN         | MAX   |
| A   | 0.175  | 0.205 | 4.45        | 5.20  |
| B   | 0.170  | 0.210 | 4.32        | 5.33  |
| C   | 0.125  | 0.165 | 3.18        | 4.19  |
| D   | 0.016  | 0.021 | 0.407       | 0.533 |
| G   | 0.045  | 0.055 | 1.15        | 1.39  |
| H   | 0.095  | 0.105 | 2.42        | 2.66  |
| J   | 0.015  | 0.020 | 0.39        | 0.50  |
| K   | 0.500  | ---   | 12.70       | ---   |
| L   | 0.250  | ---   | 6.35        | ---   |
| N   | 0.080  | 0.105 | 2.04        | 2.66  |
| P   | ---    | 0.100 | ---         | 2.54  |
| R   | 0.115  | ---   | 2.93        | ---   |
| V   | 0.135  | ---   | 3.43        | ---   |

### STYLE 12:

- PIN 1. MAIN TERMINAL 1
- GATE
- MAIN TERMINAL 2

ON Semiconductor and are registered trademarks of Semiconductor Components Industries, LLC (SCILLC). SCILLC reserves the right to make changes without further notice to any products herein. SCILLC makes no warranty, representation or guarantee regarding the suitability of its products for any particular purpose, nor does SCILLC assume any liability arising out of the application or use of any product or circuit, and specifically disclaims any and all liability, including without limitation special, consequential or incidental damages. "Typical" parameters which may be provided in SCILLC data sheets and/or specifications can and do vary in different applications and actual performance may vary over time. All operating parameters, including "Typicals" must be validated for each customer application by customer's technical experts. SCILLC does not convey any license under its patent rights nor the rights of others. SCILLC products are not designed, intended, or authorized for use as components in systems intended for surgical implant into the body, or other applications intended to support or sustain life, or for any other application in which the failure of the SCILLC product could create a situation where personal injury or death may occur. Should Buyer purchase or use SCILLC products for any such unintended or unauthorized application, Buyer shall indemnify and hold SCILLC and its officers, employees, subsidiaries, affiliates, and distributors harmless against all claims, costs, damages, and expenses, and reasonable attorney fees arising out of, directly or indirectly, any claim of personal injury or death associated with such unintended or unauthorized use, even if such claim alleges that SCILLC was negligent regarding the design or manufacture of the part. SCILLC is an Equal Opportunity/Affirmative Action Employer. This literature is subject to all applicable copyright laws and is not for resale in any manner.

### PUBLICATION ORDERING INFORMATION

#### LITERATURE FULFILLMENT:

Literature Distribution Center for ON Semiconductor  
P.O. Box 61312, Phoenix, Arizona 85082-1312 USA  
Phone: 480-829-7710 or 800-344-3860 Toll Free USA/Canada  
Fax: 480-829-7709 or 800-344-3867 Toll Free USA/Canada  
Email: [orderlit@onsemi.com](mailto:orderlit@onsemi.com)

N. American Technical Support: 800-282-9855 Toll Free  
USA/Canada

Japan: ON Semiconductor, Japan Customer Focus Center  
2-9-1 Kamimeguro, Meguro-ku, Tokyo, Japan 153-0051  
Phone: 81-3-5773-3850

ON Semiconductor Website: <http://onsemi.com>

Order Literature: <http://www.onsemi.com/litorder>

For additional information, please contact your local Sales Representative.

MAC97/D