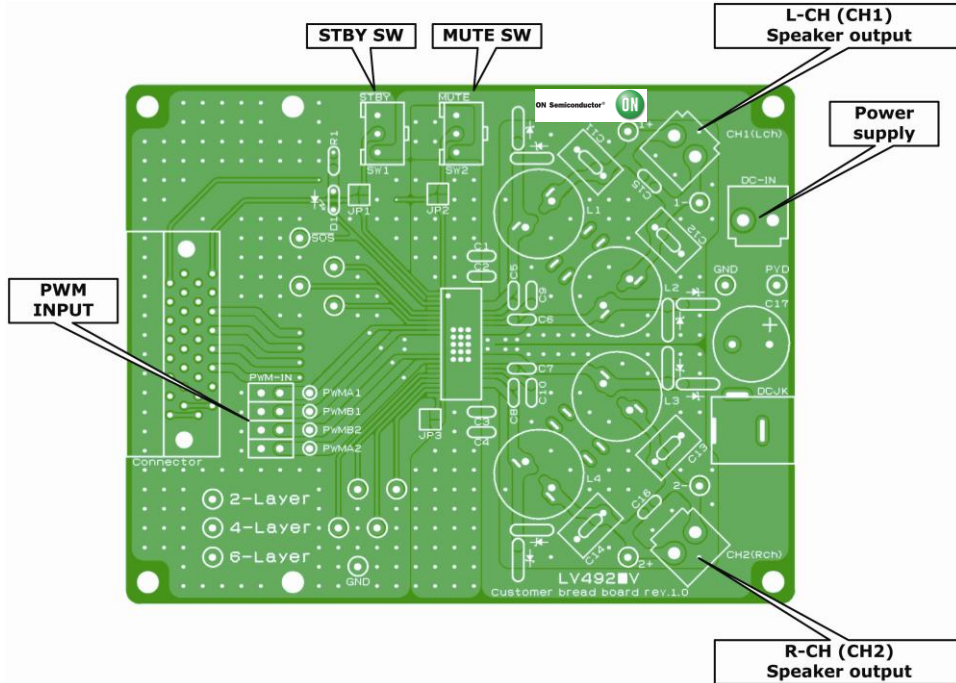




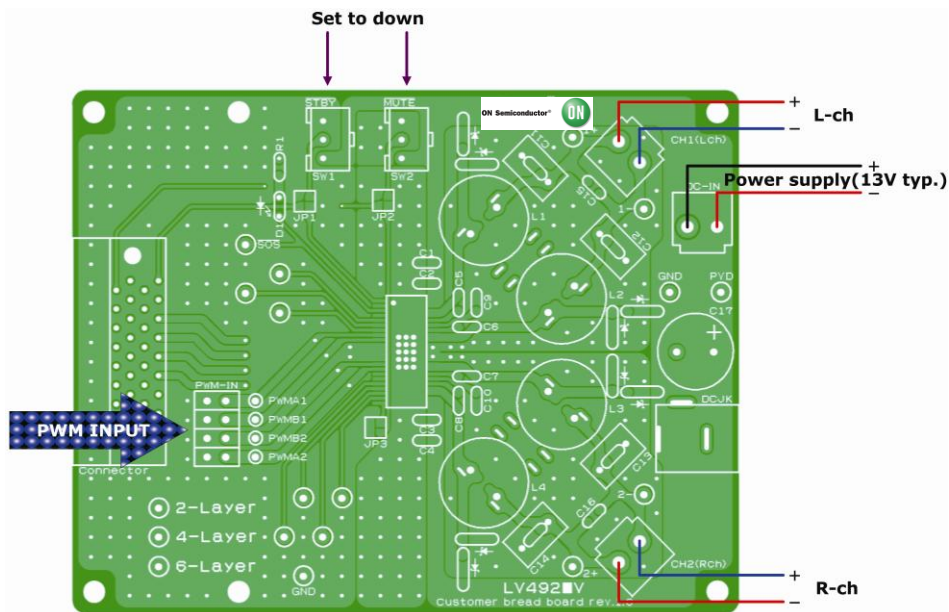
Test Procedure for the LV4924VHGEVB Evaluation Board

View



Set-up

1. Connect power supply (13V dc) to the terminal.
2. Connect speakers (8Ω) to the terminals.
3. Connect PWM input to the terminals.





Test

1. Turn on 13V dc power supply.
2. STBY_SW set to up-side (STBY: Off).
3. MUTE_SW set to up-side (MUTE: Off).
4. Turn on PWM input.

Shut Down

1. MUTE_SW set to down-side (MUTE: On).
2. STBY_SW set to down-side (STBY: On).
3. Turn off 13V dc power supply.

Caution: STBY_SW must be set to down-side after MUTE_SW.