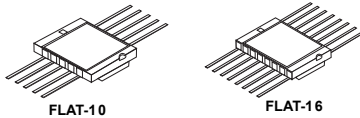


Rad-hard 4.5 A dual low-side MOSFET driver



Features

- Wide operating voltage range: 4.65 V to 18 V
- Parallel driving capability up to 9 A
- Non-inverting configuration
- Input 5 V logic level compatibility
- 110 ns typical propagation delay
- Matched propagation delays between the two channels (5 ns max.)
- 20 mV maximum low level output voltage
- 30 ns rise and fall times
- +/-5 V common mode bouncing between signal and power grounds
- TID:
 - 100 krad HDR
 - 100 krad LDR
- QML-V qualification
- Hermetic package

Applications

- Switch mode power supply
- DC-DC converters
- Motor controllers
- Line drivers

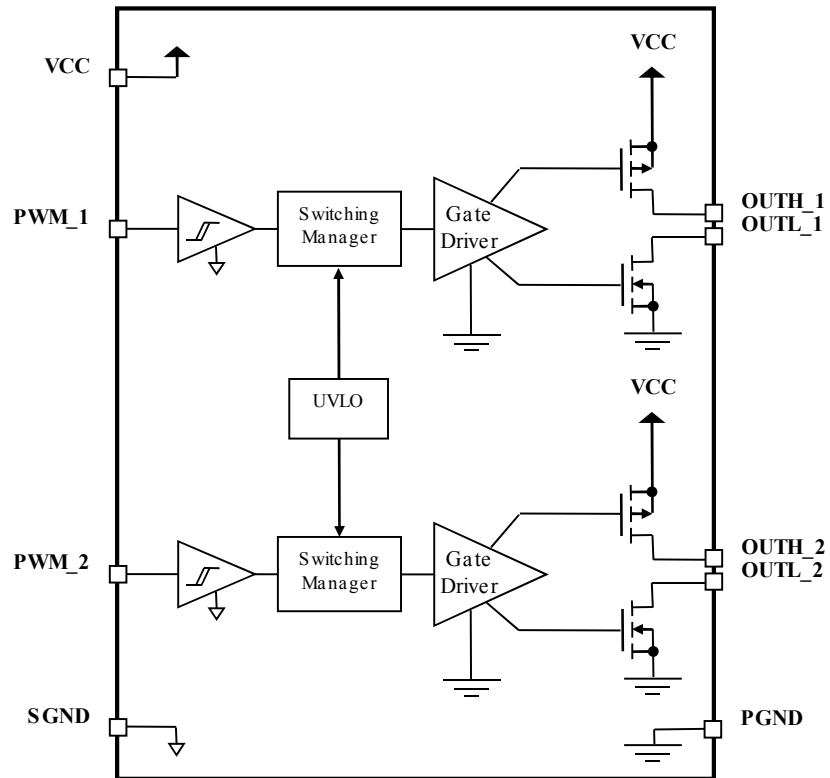
Maturity status link

[RHRPM4424](#)

Description

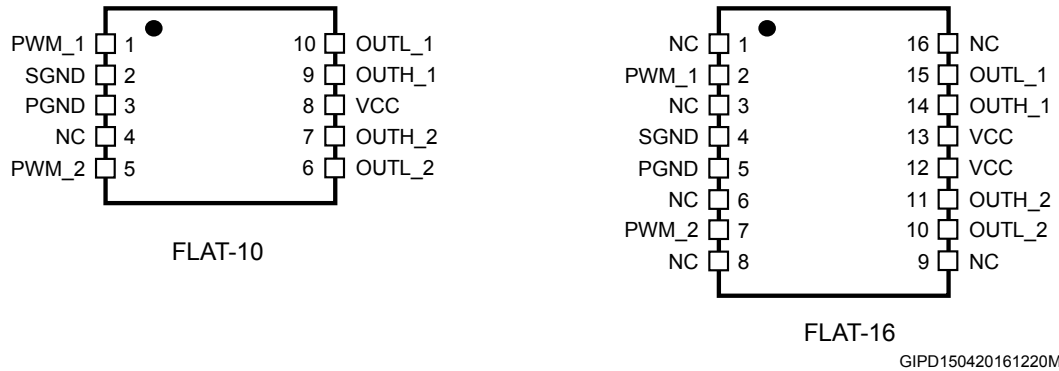
The [RHRPM4424](#) is a flexible, high-frequency dual low-side driver specifically designed to work with high capacitive MOSFETs and IGBTs in an environment with high levels of radiation such as aerospace. The [RHRPM4424](#) outputs can sink and source 4.5 A of peak current independently. By putting in parallel the two PWM outputs, a higher driving current (up to 9 A peak) can be obtained. The [RHRPM4424](#) works with CMOS/TTL compatible PWM signal so it can be driven by an external PWM controller, such as the ST1843 or the ST1845. The FLAT-16 version conforms to an industry standard pinout and can dissipate up to 550 mW per channel, while FLAT-10 version optimizes the PCB real estate. Since both of packages are hermetic, this device is suitable for any kind of harsh-environment.

1 Block diagram

Figure 1. Block diagram


AMG050520171000MT

2 Pin configuration

Figure 2. Pin configuration (top view)


GIPD150420161220MT

Note: *FLAT-10: the upper metallic package lid is connected to pin 4.*

FLAT-16: the upper metallic package lid and the bottom metallization are electrically floating.

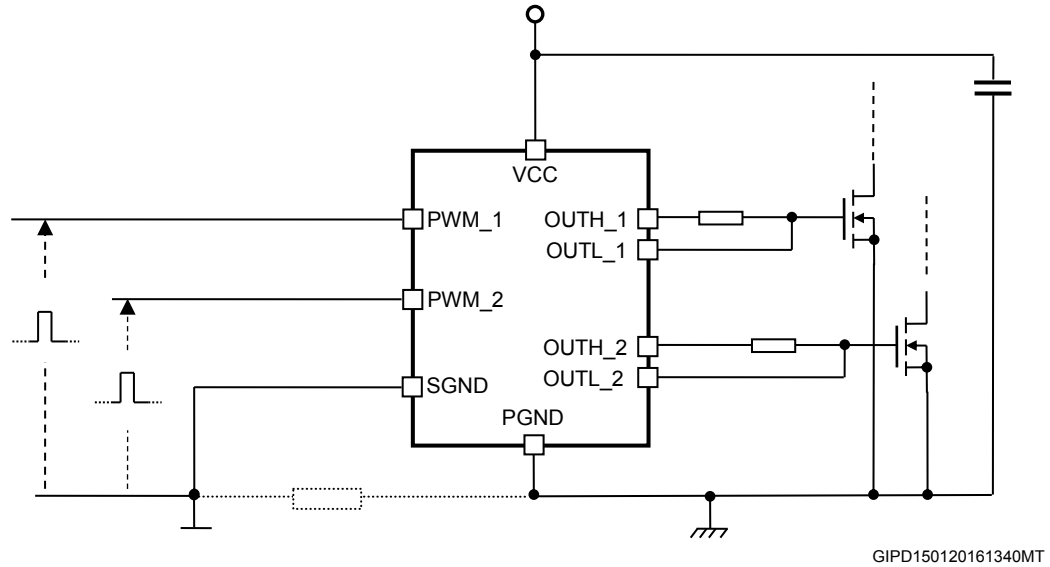
Table 1. Pin description

Pin name		Name	Type	Description
FLAT-10	FLAT-16			
8	12 13	VCC	Supply	Supply voltage. Bypass with low ESR (for example MLCC type) capacitor to the PCB ground plane.
3	5	PGND	Ground	Ground reference for output drivers. Connect this pin to the PCB ground plane.
2	4	SGND	Ground	Ground reference for PWM input pins. Input pin (PWM_1, PWM_2 and SGND) common mode can range +/-5 V versus PGND. Ground reference for PWM input pins. Input pin (PWM_1, PWM_2 and SGND) common mode can range +/-5 V versus PGND.
1	2	PWM_1	I	PWM input signal (non-inverting) for driver 1 featuring TTL/CMOS compatible threshold and hysteresis. Don't leave the pin floating.
5	7	PWM_2	I	PWM input signal (non-inverting) for driver 2 featuring TTL/CMOS compatible threshold and hysteresis. Don't leave the pin floating.
9	14	OUTH_1	O	High-side open drain pin of driver 1. Connect this pin to OUTL_1 either directly or by an external resistor if an asymmetric ON/OFF switching time is desired.
10	15	OUTL_1	O	Low-side open drain pin of driver 1. Connect this pin to OUTH_1 either directly or by an external resistor if an asymmetric ON/OFF switching time is desired.
7	11	OUTH_2	O	High-side open drain pin of driver 2. Connect this pin to OUTL_2 either directly or by an external resistor if an asymmetric ON/OFF switching time is desired.
6	10	OUTL_2	O	Low-side open drain pin of driver 2. Connect this pin to OUTH_2 either directly or by an external resistor if an asymmetric ON/OFF switching time is desired.

Pin name		Name	Type	Description
FLAT-10	FLAT-16			
4	1 3 6 9 16	NC		Not connected pin. Leave it floating or connect it to any potential.

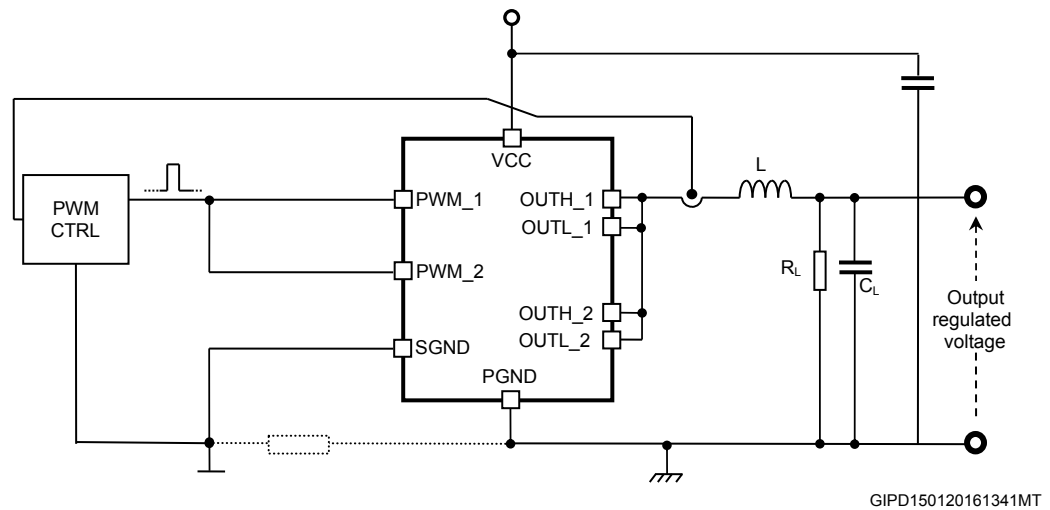
3 Typical application diagram

Figure 3. Typical application diagram



Note: SGND and PGND can be shorted or decoupled up to +/-5 V.

Figure 4. Typical application diagram as buck switching regulator



Note: SGND and PGND can be shorted or decoupled up to +/-5 V.

In Figure 4. Typical application diagram as buck switching regulator, the output stage of the RHRPM4424 device directly drives an inductor; in this configuration, the RHRPM4424 output stages are in parallel to exploit the maximum current capability of the device. The MOSFET driver works as a synchronous buck converter.

4 Maximum ratings

Table 2. Thermal data

Symbol	Parameter	Value		Unit
		FLAT-10	FLAT-16	
R_{thjc}	Max. thermal resistance, junction-to-case	25	8	°C/W
$R_{thja}^{(1)}$	Max. thermal resistance, junction-to-ambient	117	70	°C/W
P_{TOT}	Maximum power dissipation @ $T_{amb} = 70\text{ °C}$	0.70	1.10	W
P_{TOT}	Maximum power dissipation @ $T_{amb} = 125\text{ °C}$	0.21	0.36	W

1. Measured on 2s2p board as per std Jedec (JESD51-7) in natural convection.

Table 3. Absolute maximum ratings

Symbol	Parameter	Value	Unit
V_{CC}	Supply voltage	PGND-0.3 to PGND+20	V
PGND	Power ground	-	V
SGND	Signal ground	PGND-5 to PGND+5	V
PWM_1			
PWM_2	PWM input	SGND-0.3 to VCC+0.3	V
OUT_1			
OUT_2	Driver output	PGND-0.3 to VCC+0.3	V
I_{OUT}	DC output current (for each driver)	750	mA
T_{stg}	Storage temperature	-65 to 150	°C
T_J	Maximum operating junction temperature	150	°C
T_{LEAD}	Lead temperature (soldering, 10 seconds) ⁽¹⁾	300	°C
V_{HBM}	ESD capability, human body model	2000	V
V_{MM}	ESD capability, machine model	200	V

1. The distance is 1.5 mm far from the device body and the same lead is resoldered after 3 minutes.

5 Electrical characteristics

$V_{CC} = 4.65 \text{ V to } 18 \text{ V}$ and $T_J = -55 \text{ to } 125 \text{ }^\circ\text{C}$, unless otherwise specified.

Table 4. Electrical characteristics

Symbol	Parameter	Test conditions	Min.	Typ.	Max.	Unit
I_{CC}	V_{CC} quiescent current	$V_{CC} = 18 \text{ V}$ Inputs not switching OUTH_1 \equiv OUTL_1 OUTH_2 \equiv OUTL_2 $T_J = 25 \text{ }^\circ\text{C}$		1.6	2.1	mA
V_{UVLO}	Undervoltage lockout threshold for turn-on	V_{CC} rising		4.3	4.65	V
	Undervoltage lockout hysteresis			300		mV
Input stage						
PWM_x	Input at high level – V_{IH}	Rising threshold	2.0			V
	Input at low level – V_{IL}	Falling threshold			0.8	V
$t_{D_PWM_x}$	Minimum delay time between V_{CC} supply connection and PWM_x inputs driving ⁽¹⁾			50		ms
I_{PWM}	PWM_xinput pin current	PWM_x = SGND	-1		+1	μA
		PWM_x = 3.3 V $V_{CC} = 10 \text{ V and } 18 \text{ V}$	0		+2	
		PWM_x = $V_{CC} - 0.5 \text{ V}$ $V_{CC} = 18 \text{ V}$	0		+5	
dVPWM/dt	PWM_xinput pin transient ⁽¹⁾		100			mV/s
Output stage						
R_{hi}	Source resistance	$V_{CC} = 10 \text{ V}$ Inputs at high level $I_{OUT} = 100 \text{ mA}$ $T_J = 25 \text{ }^\circ\text{C}$		0.7	1.1	Ω
		$V_{CC} = 10 \text{ V}$ Inputs at high level $I_{OUT} = 100 \text{ mA}$			1.4	Ω
R_{lo}	Sink resistance	$V_{CC} = 10 \text{ V}$ Inputs at low level $I_{OUT} = 100 \text{ mA}$ $T_J = 25 \text{ }^\circ\text{C}$		1.0	1.4	Ω
		$V_{CC} = 10 \text{ V}$ Inputs at low level $I_{OUT} = 100 \text{ mA}$			1.9	Ω

Symbol	Parameter	Test conditions	Min.	Typ.	Max.	Unit
I_{SOURCE}	Source peak current ⁽¹⁾	$V_{CC} = 10\text{ V}$ Inputs at high level C_{OUT} to GND = 10 nF		5.5		A
I_{SINK}	Sink peak current ⁽¹⁾	$V_{CC} = 10\text{ V}$ Inputs at low level C_{OUT} to GND = 10 nF		4.5		A
V_{OH}	High level output voltage, $V_{CC} - V_{OUT}$	Inputs at high level $OUTH_1 \equiv OUTL_1$ $OUTH_2 \equiv OUTL_2$ $I_{OUT} = 1\text{ mA}$			10	mV
V_{OL}	Low level output voltage, V_{OUT}	Inputs at low level $OUTH_1 \equiv OUTL_1$ $OUTH_2 \equiv OUTL_2$ $I_{OUT} = 1\text{ mA}$			10	mV
t_R	Output rise time	$V_{CC} = 10\text{ V}$ $OUTH_1 \equiv OUTL_1$ $OUTH_2 \equiv OUTL_2$ C_{OUT} to GND = 10 nF		30		ns
t_F	Output fall time	$V_{CC} = 10\text{ V}$ $OUTH_1 \equiv OUTL_1$ $OUTH_2 \equiv OUTL_2$ C_{OUT} to GND = 10 nF		30		ns
Propagation delay						
t_D	Input- to-output delay time	$V_{CC} = 10\text{ V}$ $OUTH_1 \equiv OUTL_1$ $OUTH_2 \equiv OUTL_2$ C_{OUT} to GND = 10 nF		110		ns
	Matching between propagation delays ⁽¹⁾		-5		5	ns

1. Parameter guaranteed at design level and characterized, not tested in production.

6 Radiations

6.1 Total ionizing dose (MIL-STD-883 test method 1019)

The products that are guaranteed in radiation within RHA QML-V system, fully comply with the MIL-STD-883 test method 1019 specification. The RHRPM4424 is being RHA QML-V qualified, tested and characterized in full compliance with the MIL-STD-883 specification, both below 10 mrad/s (low dose rate) and between 50 and 300 rad/s (high dose rate).

- Testing is performed in accordance with MIL-PRF-38535 and the test method 1019 of the MIL-STD-883 for total ionizing dose (TID).
- ELDRS characterization is performed in qualification only on both biased and unbiased parts, on a sample of ten units from two different wafer lots.
- Each wafer lot is tested at high dose rate only, in the worst bias case condition, based on the results obtained during the initial qualification.

Table 5. TID

Type	Conditions	Value	Unit
TID	50 rad(Si)/s high dose rate up to	100	krad
	10 mrad(Si)/s low dose rate up to	100	
	ELDRS free up to	100	
Output stage source resistance drift	From 0 krad to 100 krad at 50 rad/s	< 0.3	Ω
Output stage sink resistance drift	From 0 krad to 100 krad at 50 rad/s	< 0.3	Ω

6.2 Heavy Ions

The heavy ions trials are performed on qualification lots only. No additional test is performed. Table x summarizes the results of heavy ions tests.

Table 6. HI

Feature	Conditions	Value	Unit
SEL/SEB	LET = 60 MeV.cm ² /mg V _{CC} = 18 V	No latchup/burnout	-
	LET = 70 MeV.cm ² /mg V _{CC} = 16 V	No latchup/burnout	
SET	V _{CC} = 4.5 V	LET _{TH} = 18.5	MeV*cm ² /mg
		$\sigma_{SAT} = 7*10^{-6}$	cm ²
	V _{CC} = 18 V	LET _{TH} = 18	MeV*cm ² /mg
		$\sigma_{SAT} = 2*10^{-6}$	cm ²

7 Device description and operation

7.1 Overview

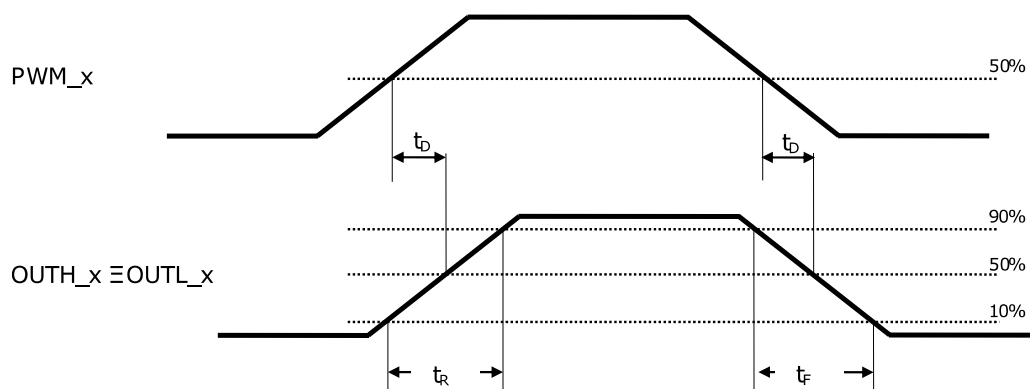
The RHRPM4424 is a dual low-side driver suitable to charge and discharge big capacitive loads like MOSFETs or IGBTs used in power supplies and DC-DC modules. The RHRPM4424 can sink and source 4.5 A on each low-side driver branch but a higher driving current can be obtained by paralleling its outputs. Even though this device has been designed to cope with loads requiring high peak current and fast switching time, the ultimate driving capability depends on the power dissipation in the device which must be kept below the power dissipation capability of the package. This aspect is met in [Section 8.2 Power dissipation](#). The RHRPM4424 uses VCC pin to supply and two ground pins (SGND signal ground and PGND power ground) for return. SGND is used as reference ground for the input stage and it can be connected to ground of the remote controller. PGND is the reference ground for the output stage; SGND can bounce +/-5 V versus PGND so that PWM input pin common mode can range +/-5 V versus PGND. The dual low-side driver has been designed to work with supply voltage in the range from 4.65 V to 18 V. Before VCC overcomes UVLO threshold (V_{UVLO}), the RHRPM4424 keeps off both low-side MOSFETs (OUTL_x outputs are grounded) then, after UVLO threshold has crossed, PWM input keeps the control of the driver operations. Input pins (PWM_1 and PWM_2) are CMOS/TTL compatible with capability to work with voltages up to VCC.

7.2 Input stage

PWM inputs of the RHRPM4424 dual low-side driver are compatible to CMOS/TTL levels with capability to be pulled up to VCC. The relation between PWM_1 and PWM_2 input pins and the corresponding PWM output is depicted in [Figure 5. Time diagram](#). In the worst case, input levels above 2.0 V are recognized as high logic values and values below 0.8 V are recognized as low logic values. Input-to-output propagation delays (t_D) and also rise (t_R) and fall (t_F) times have been designed to assure the operation in fast switching environment. The matching between delays in the two branches of the RHRPM4424 assures symmetry in the operations and allows the parallel output functionality. SGND input stage ground reference can bounce versus PGND of +/-5 V.

When the VCC power supply is connected, a minimum delay time of $t_{D_PWM_x}$ must be guaranteed before driving PWM_x inputs to let the internal circuitry be properly biased.

Figure 5. Time diagram



AMG171020161000MT

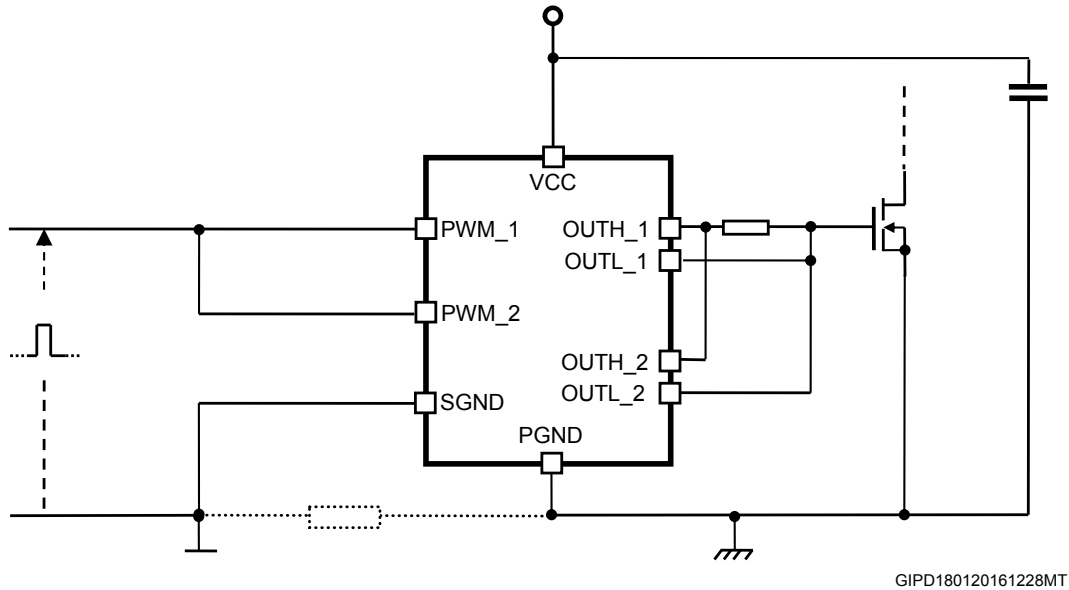
7.3 Output stage

The RHRPM4424 output stage uses ST's proprietary lateral DMOS. Both NDMOS and PDMOS have been sized to exhibit high driving peak current as well as low on-resistance. When OUTL_x and OUTH_x are connected together, the typical peak current is 4.5 A. The device features the adaptive anti-cross-conduction protection. The RHRPM4424 continuously monitors the status of the internal NDMOS and PDMOS: in case of a PWM transition, before the desired DMOS switches on, the device awaits until the other DMOS completely turns off. No static current flows from VCC to ground.

7.4 Parallel output operation

For applications demanding high driving current capability (over 4.5 A provided by the single branch), the RHRPM4424 allows the two drivers to be in parallel to reach the highest current, up to 9 A. This configuration is depicted in Figure 6. [Parallel output connection](#) where PWM_1 and PWM_2 and OUTH_x and OUTL_x are tied together. The matching of internal propagation delays guarantees that the two drivers switch on and off simultaneously.

Figure 6. Parallel output connection



7.5 Gate driver voltage flexibility

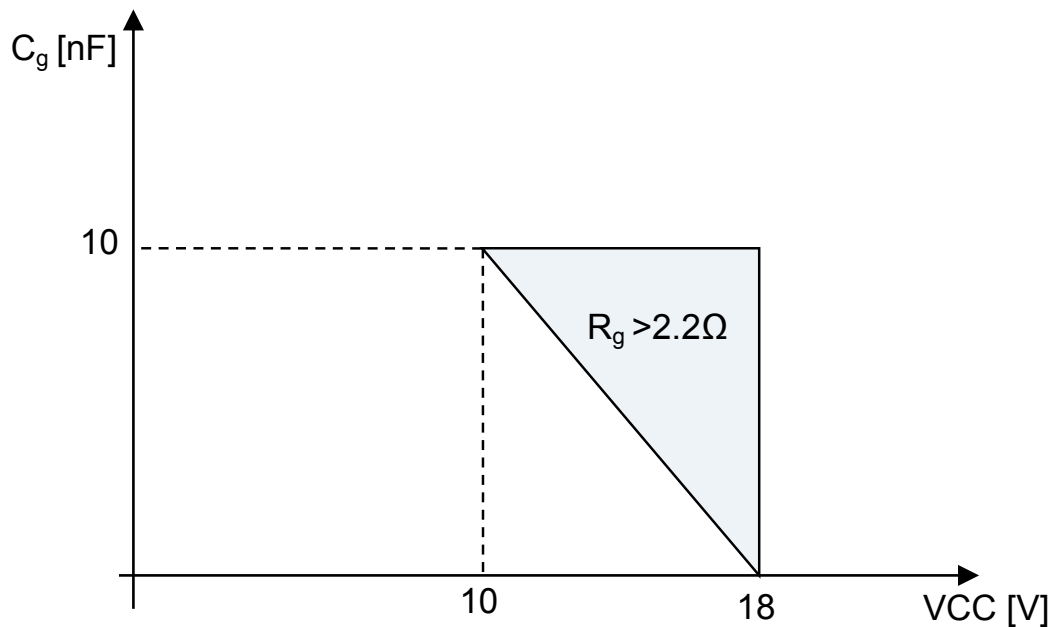
The RHRPM4424 allows the user to select the gate drive voltage so to optimize the efficiency of the application. The low-side MOSFET driving voltage depends on the voltage applied to VCC and can range from 4.65 V to 18 V.

8 Design guidelines

8.1 Output series resistance

The output resistance allows the high frequency operation without exceeding the maximum power dissipation of the driver package. See [Section 8.2 Power dissipation](#) to understand how the output resistance value is obtained. For applications with VCC supply voltage greater than 10 V and high capacitive loads ($C_g > 10$ nF), the dissipated power in the output stage of the device has to be limited, therefore at least 2.2 Ω Rg gate resistor has to be added. [Figure 7. Minimum gate resistance](#) is a synthetic view of the boundaries for the safe operation of the RHRPM4424.

Figure 7. Minimum gate resistance



GIPD180120161238MT

8.2 Power dissipation

The RHRPM4424 embeds two high current low-side drivers which drive high capacitive MOSFETs. This section estimates the power dissipated inside the device in normal applications. Two main terms contribute to the device power dissipation: bias power and driver power.

- PDC bias power depends on the static consumption of the device through the supply pins and it is given by below equation:

Equation 1

$$P_{DC} = V_{CC} * I_{CC}$$

- The driver power is the necessary power to continuously switch on and off the external MOSFETs; it is a function both of the switching frequency and total gate charge of the selected MOSFETs. P_{SW} total dissipated power is given by three main factors:
 - external gate resistance (when present)
 - intrinsic MOSFET resistance
 - intrinsic driver resistance

It is indicated in the below equation:

Equation 2

$$P_{SW} = F_{SW} \cdot (Q_G \cdot V_{CC})$$

When an application is designed using the RHRPM4424, the effect of external gate resistors on the power dissipated by the driver has to be taken into account. External gate resistors help the device to dissipate the switching power since the same power, P_{SW} , is shared between the internal driver impedance and the external resistor.

In [Figure 7. Minimum gate resistance](#), the MOSFET driver can be represented by a push-pull output stage with two different MOSFETs:

- PDMOS to drive the external gate to high level
- NDMOS to drive the external gate to low level (with $R_{DS(on)}$: R_{hi} , R_{lo})

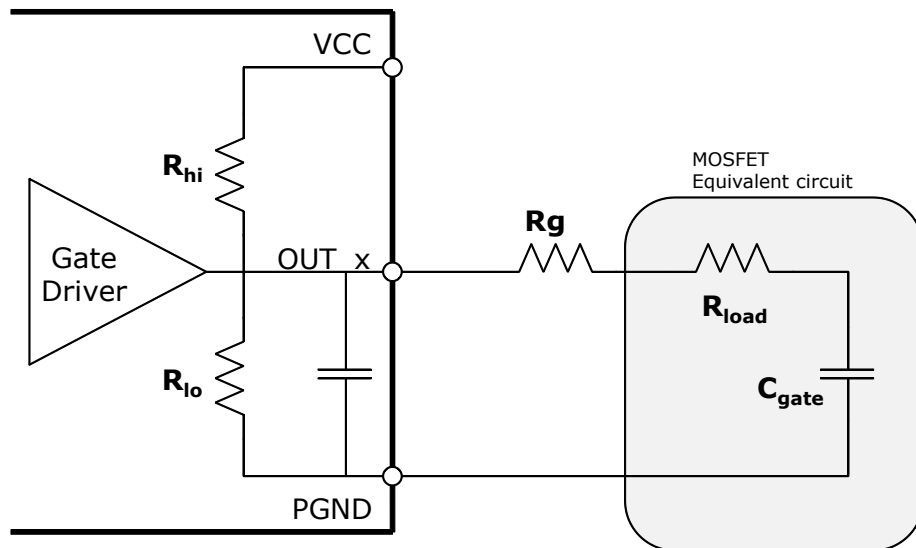
The external MOSFET can be represented as C_{gate} capacitance, which stores Q_G gate charge required by the external MOSFET to reach V_{CC} driving voltage. This capacitance is charged and discharged at F_{SW} frequency. P_{SW} total power is dissipated among the resistive components distributed along the driving path. According to the external gate resistance and the intrinsic MOSFET gate resistance, the driver only dissipates a P_{SW} portion as follows (per driver):

Equation 3

$$P_{SW} = \frac{1}{2} \cdot C_{gate} \cdot (V_{CC})^2 \cdot F_{SW} \cdot \left(\frac{R_{hi}}{R_{hi} + R_g + R_{load}} + \frac{R_{lo}}{R_{lo} + R_g + R_{load}} \right)$$

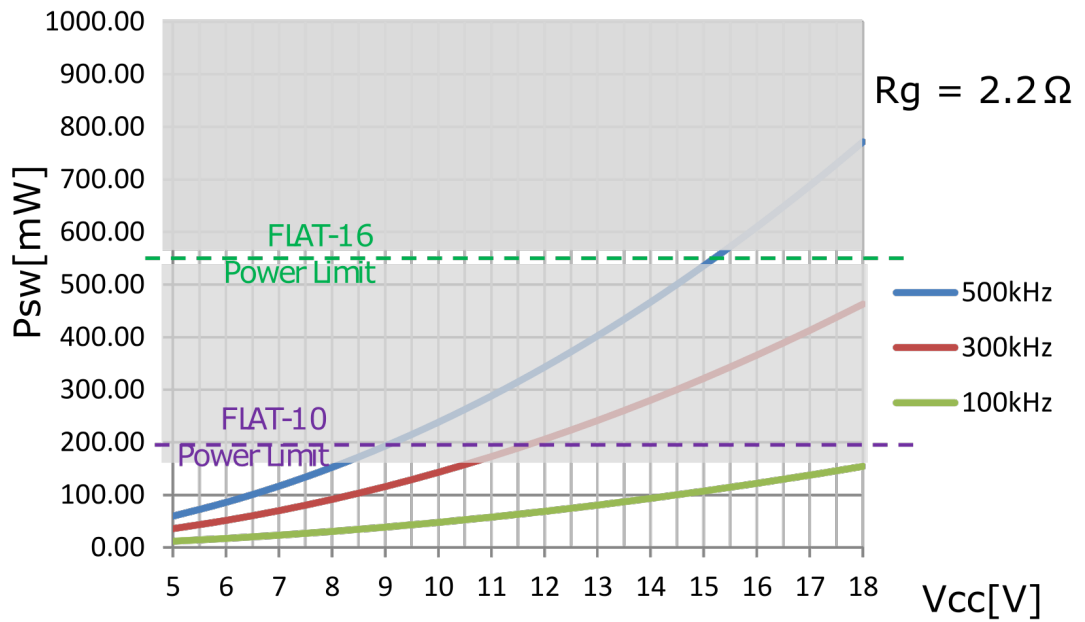
The total dissipated power from the driver is given by $P_{TOT} = P_{DC} + 2 \cdot P_{SW}$.

Figure 8. Driver and load equivalent circuits

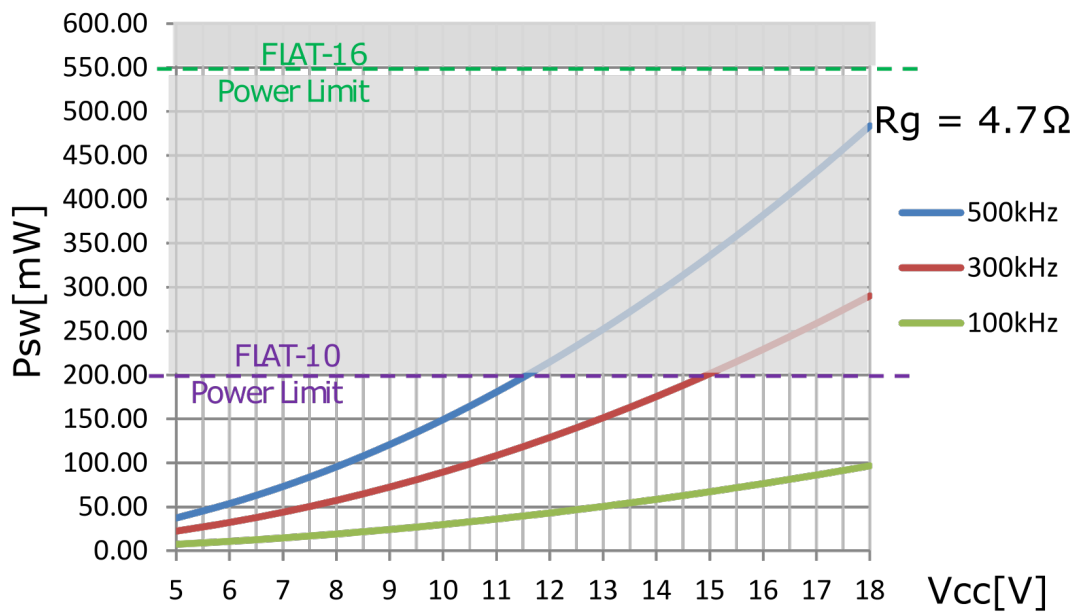


$R_{hi} = R_{ds_on}$ of the high side integrated switch
 $R_{lo} = R_{ds_on}$ of the low side integrated switch

GIPD180120161338MT

Figure 9. Power dissipation with $R_g = 2.2 \Omega$


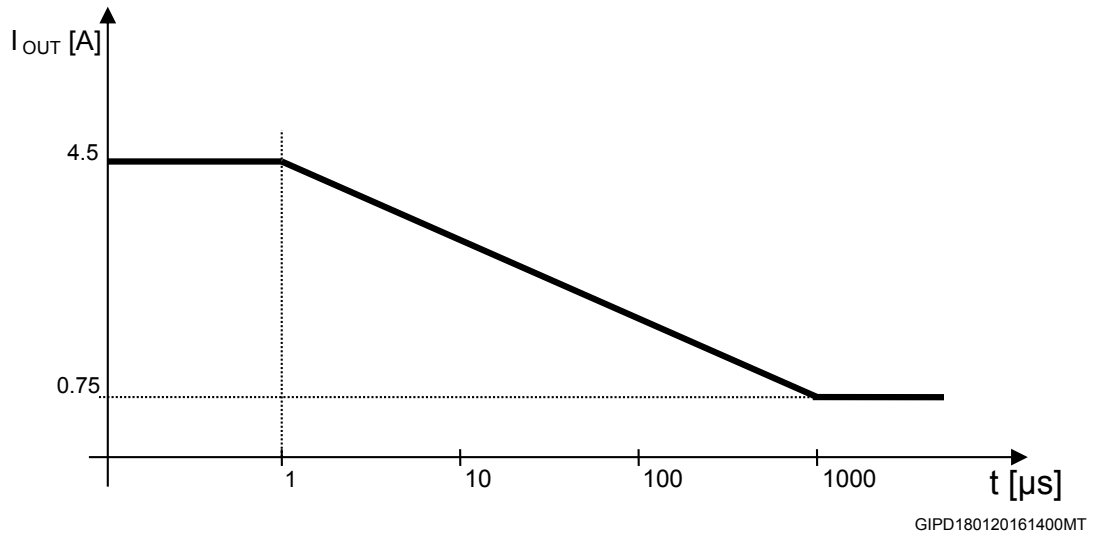
GIPD180120161346MT

Figure 10. Power dissipation with $R_g = 4.7 \Omega$


GIPD180120161354MT

With regard to the power dissipation and current capability purpose, a profile, for the curve output current versus time, is recommended. See the one depicted in Figure 11. Output current vs. time:

Figure 11. Output current vs. time



9 Layout and application guidelines

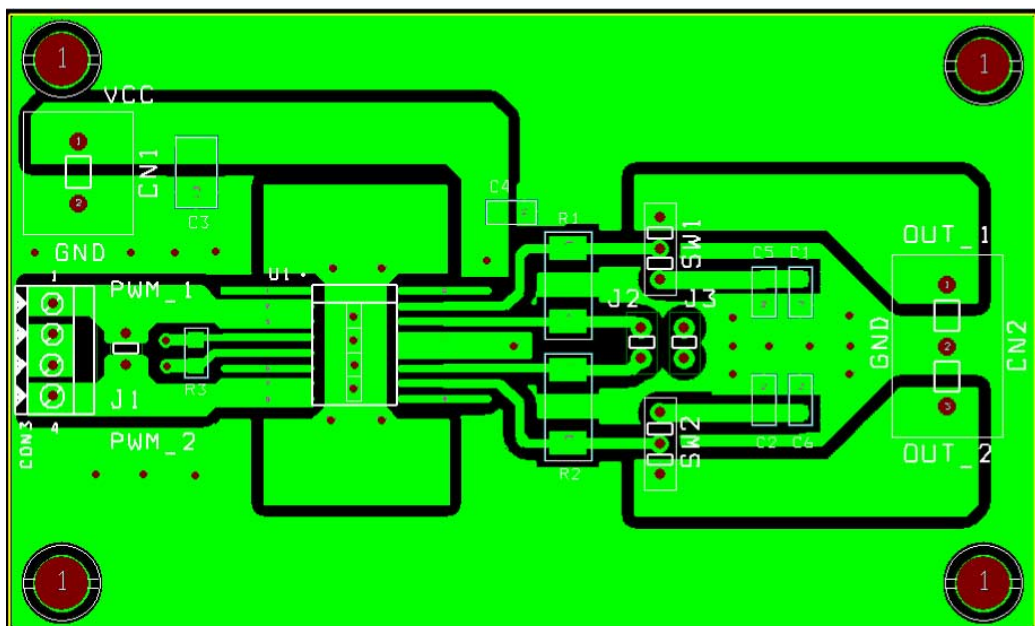
The first priority, when components are placed for these applications, is the power section, minimizing the length of each connection and loop. To minimize noise and voltage spikes (EMI and losses as well) power connections have to be a part of a power plane with wide and thick conductor traces: loop has to be minimized. The capacitor on VCC, as well as the output inductor should be placed as close as possible to IC. Traces between the driver and the external MOSFETs should be short to reduce the inductance of the trace and the ringing in the driving signals. Moreover, the number of vias has to be minimized to reduce the related parasitic effect.

Small signal components and connections to critical nodes of the application as well as bypass capacitors for the device supply are also important. The bypass capacitor (VCC capacitors) has to be placed close to the device with the shortest loop to minimize the parasitic inductance.

To improve heat dissipation, the copper area has to be placed under the IC. This copper area may be connected to other layers (if available) through vias so to improve the thermal conductivity: the combination of copper pad, copper plane and vias under the device allows the device to reach its best thermal performance. It is important for the power device to have a thermal path compatible with the dissipated power: both the driver and the external MOSFET have to be mounted on a dedicated heat sink (for example, the driver should be soldered on the copper area of the PCB, which is in strict thermal contact to an aluminum frame) sticking each part to the frame (without using any screw for the MOSFET). The glue could be the resin ME7158 (space approved resin). Moreover, two small FR4 spacers could be added to guarantee the electrical isolation of the package from the frame.

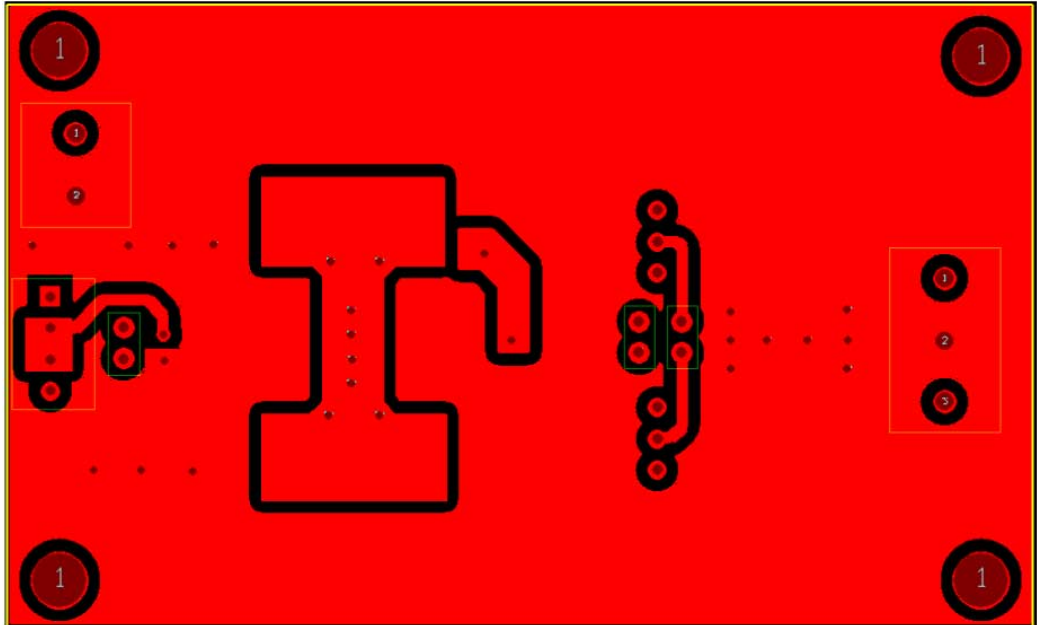
A recommended PCB layout is shown in [Figure 12. Evaluation board layout: top view](#).

Figure 12. Evaluation board layout: top view



GIPD180120161407MT

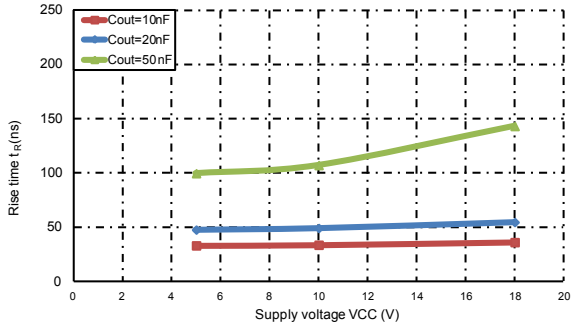
Figure 13. Evaluation board layout: bottom view



GIPD180120161428MT

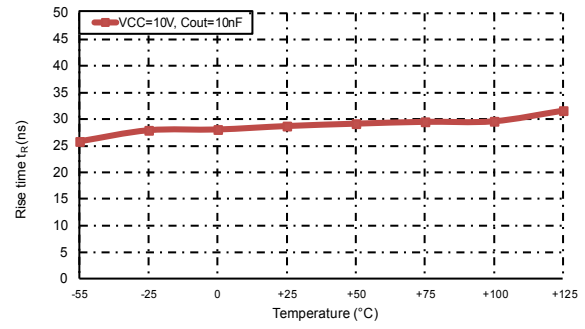
10 Typical characteristics

Figure 14. PWM_x rise time vs supply voltage



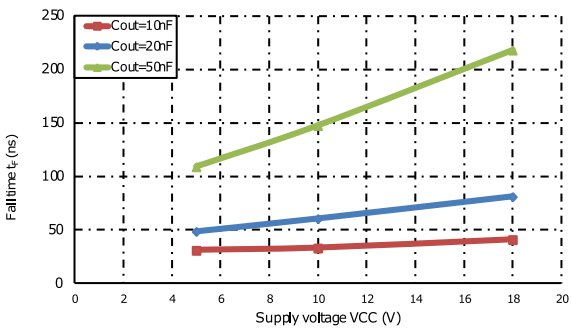
GIPD180120161500MT

Figure 15. PWM_x rise time vs temperature



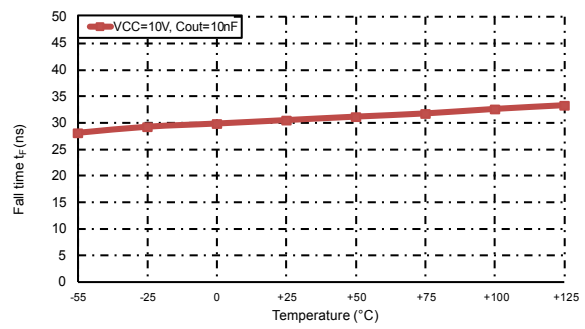
GIPD180120161501MT

Figure 16. PWM_x fall time vs supply voltage



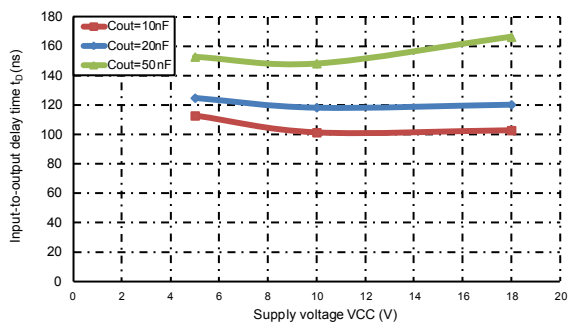
GIPD180120161502MT

Figure 17. PWM_x fall time vs temperature



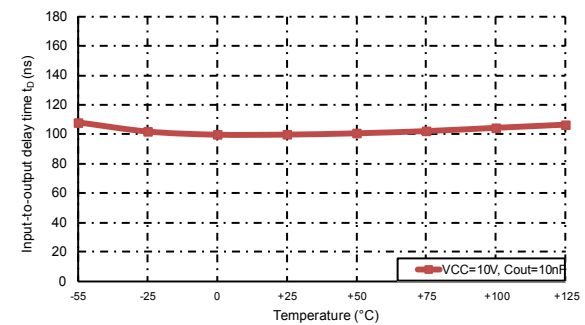
GIPD180120161503MT

Figure 18. Input-to-output delay time vs supply voltage



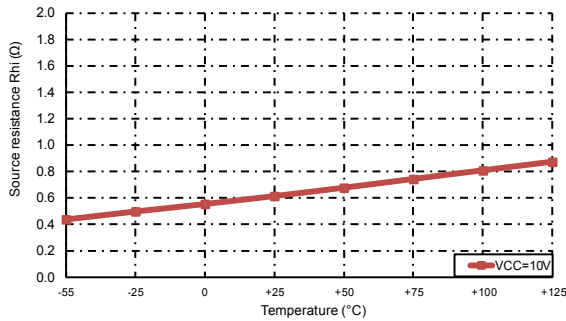
GIPD180120161504MT

Figure 19. Input-to-output delay time vs temperature



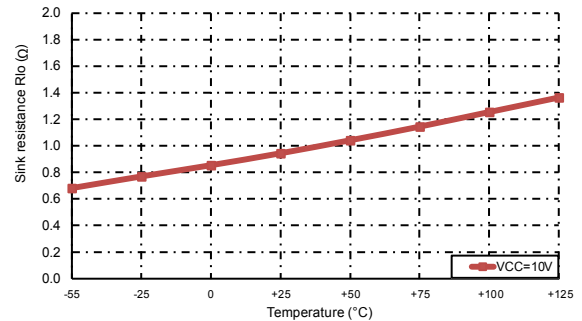
GIPD180120161505MT

Figure 20. Source resistance vs temperature



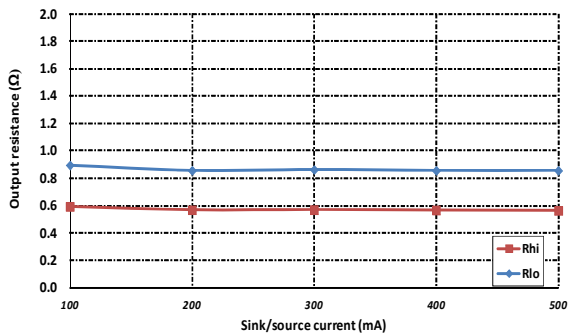
GIPD180120161506MT

Figure 21. Sink resistance vs temperature



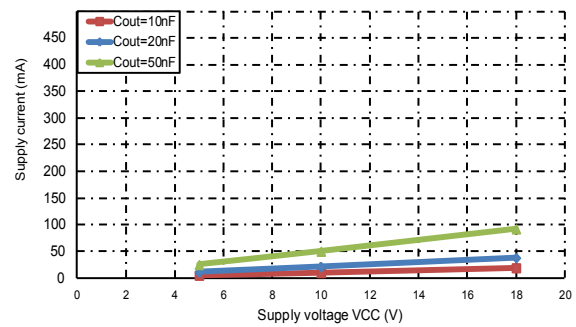
GIPD180120161507MT

Figure 22. Output resistance vs current



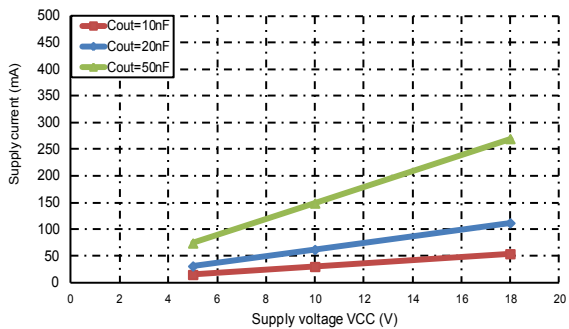
GIPD180120161508MT

Figure 23. Operating supply current vs supply voltage (operating frequency = 100 kHz)



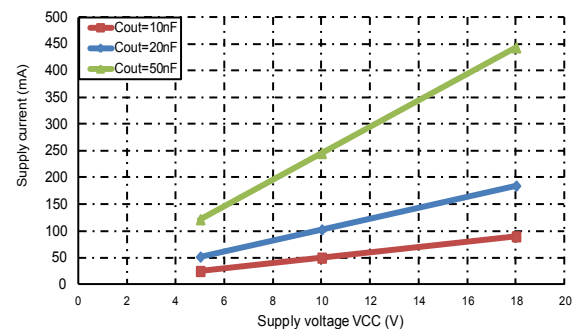
GIPD180120161509MT

Figure 24. Operating supply current vs supply voltage (operating frequency = 300 kHz)



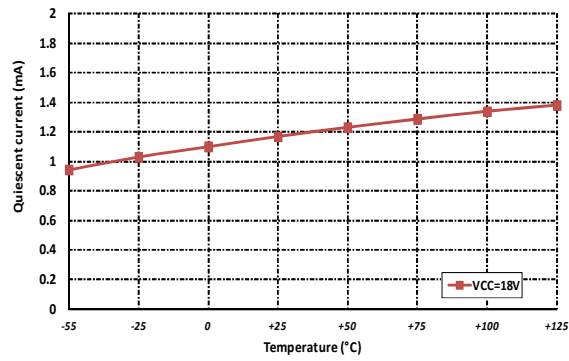
GIPD180120161510MT

Figure 25. Operating supply current vs supply voltage (operating frequency = 500 kHz)



GIPD180120161511MT

Figure 26. Quiescent current vs temperature



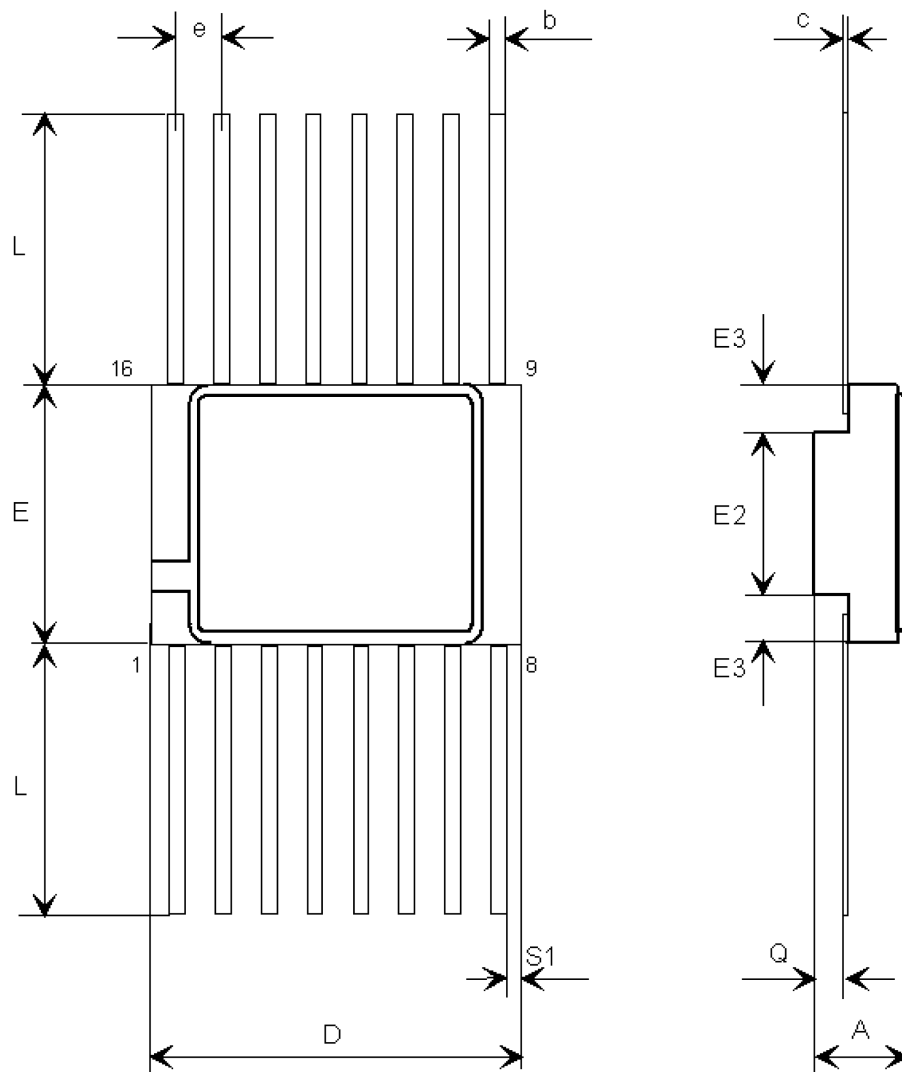
GIPD180120161512MT

11 Package information

In order to meet environmental requirements, ST offers these devices in different grades of ECOPACK® packages, depending on their level of environmental compliance. ECOPACK® specifications, grade definitions and product status are available at: www.st.com. ECOPACK® is an ST trademark.

11.1 Flat-16 package information

Figure 27. FLAT-16 package outline



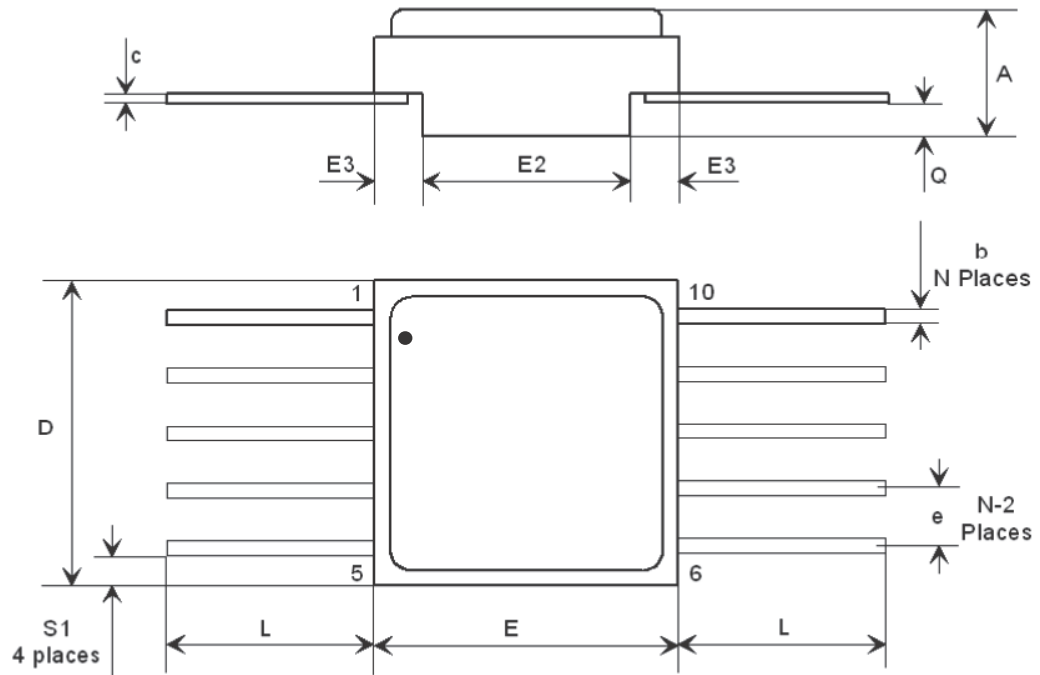
7450901_D

Table 7. FLAT-16 package mechanical data

Dim.	mm		
	Min.	Typ.	Max.
A	2.42		2.88
b	0.38		0.48
c	0.10		0.18
D	9.71		10.11
E	6.71		7.11
E2	3.30	3.45	3.60
E3	0.76		
e		1.27	
L	6.35		7.36
Q	0.66		1.14
S1	0.13		

11.2 Flat-10 package information

Figure 28. Flat-10 package outline



8367330_A

Table 8. Flat-10 package mechanical data

Dim.	mm		
	Min.	Typ.	Max.
A	2.26	2.44	2.62
b	0.38	0.43	0.48
c	0.102	0.127	0.152
D	6.35	6.48	6.60
E	6.35	6.48	6.60
E2	4.32	4.45	4.58
E3	0.88	1.01	1.14
e		1.27	
L	6.35		9.40
Q	0.66	0.79	0.92
S1	0.16	0.485	0.81
N			

12 Ordering information

Table 9. Order code

Order code	SMD pin	Quality level	EPPL	Package	Max. power dissipation [mW] ⁽¹⁾	Mass [g]	Temperature range	Lead finish	Packing
RHRPM4424K01V ⁽²⁾	5962R9956007VYC	QML-V	-	FLAT-16	550	0.7	-55 to 125 °C	Gold	Strip pack
RHRPM4424K02V ⁽²⁾	5962R9956007VYA			FLAT-10	350				
RHRPM4424LK01V ⁽²⁾	5962R9956007VZC			FLAT-16	550				
RHRPM4424LK02V ⁽²⁾	5962R9956007VZA			FLAT-10	350				
RH-PM4424K1 ⁽²⁾	-	Engineering model							
RH-PM4424LK1 ⁽²⁾	-								
RHRPM4424D2V ⁽²⁾	5962R9956007V9A	QML-V							

1. Per channel at $T_a = 70\text{ °C}$
2. Contact ST sales office for information about the specific conditions for product in die form and for other quality levels.

Contact ST sales office for information about the specific conditions for :

- 1) Products in die form
- 2) Other quality levels
- 3) Tape & reel packing

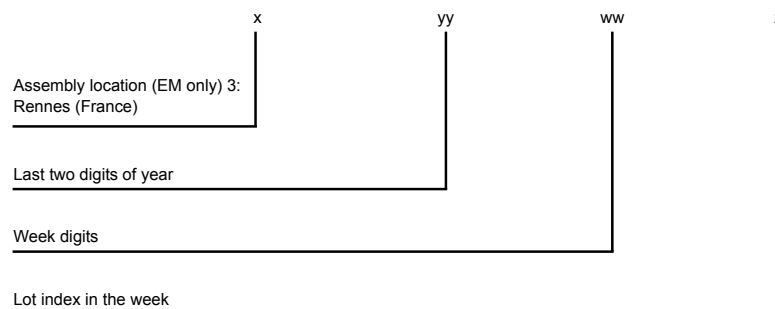
12.1 Other information

12.1.1 Data code

The date code is structured as shown below:

- EM xyywwz
- QML-V yywwz where:

Figure 29. Date code composition



12.1.2 Documentation

Table 10. Documentation provided

Quality level	Documentation
Engineering model	-
QML-V flight	Certificate of conformance with group C (reliability test) and group D (package qualification) reference Precap report PIND test summary (test method conformance certificate) ⁽¹⁾ SEM report ⁽²⁾ X-ray report Screening summary Failed component list, (list of components that have failed during screening) Group A summary (QCI electrical test) ⁽³⁾ Group B summary (QCI mechanical test) ⁽³⁾ Group E (QCI wafer lot radiation test) ⁽³⁾

1. QCI = quality conformance inspection.
2. PIND = particle impact noise detection.
3. SEM = scanning electron microscope.

Revision history

Table 11. Document revision history

Date	Revision	Changes
26-Feb-2016	1	Initial version.
03-Jun-2016	2	Updated Table 5: "Electrical characteristics". Minor text changes.
12-Sep-2016	3	Updated Features in cover page, Section 5: "Electrical characteristics", Section 7.1: "Overview", and Section 7.5: "Gate driver voltage flexibility". Minor text changes.
24-Oct-2016	4	Updated Figure 22: "Output resistance vs. current" and Figure 26: "Quiescent current vs. temperature". Minor text changes.
07-Apr-2017	5	Document status promoted from preliminary data to production data. Updated features in cover page. Removed Table 1: " Device summary". Updated Table 5: "TID" and Section 12: "Ordering information". Minor text changes.
18-May-2017	6	Updated Figure 1: "Block diagram". Minor text changes.
07-Feb-2019	7	Added new parameter $t_{D_PWM_x}$ in Section 5 Electrical characteristics and row in Section 7.2 Input stage .

Contents

1	Block diagram	2
2	Pin configuration	3
3	Typical application diagram	5
4	Maximum ratings	6
5	Electrical characteristics	7
6	Radiations	9
6.1	Total ionizing dose (MIL-STD-883 test method 1019)	9
6.2	Heavy ions	9
7	Device description	10
7.1	Overview	10
7.2	Input stage	10
7.3	Output stage	10
7.4	Parallel output operation	10
7.5	Gate driver voltage flexibility	11
8	Design guidelines	12
8.1	Output series resistance	12
8.2	Power dissipation	12
9	Layout and application guidelines	16
10	Typical performance characteristics	18
11	Package information	21
11.1	FLAT-16 package information	21
11.2	FLAT-10 package information	23
12	Ordering information	24
12.1	Other information	24
12.1.1	Data code	24
12.1.2	Documentation	24
	Revision history	26
	Contents	27

List of tables29

List of figures.....30

List of tables

Table 1.	Pin description	3
Table 2.	Thermal data	6
Table 3.	Absolute maximum ratings	6
Table 4.	Electrical characteristics	7
Table 5.	TID	9
Table 6.	HI	9
Table 7.	FLAT-16 package mechanical data	22
Table 8.	Flat-10 package mechanical data	23
Table 9.	Order code	24
Table 10.	Documentation provided	25
Table 11.	Document revision history	26

List of figures

Figure 1.	Block diagram	2
Figure 2.	Pin configuration (top view)	3
Figure 3.	Typical application diagram	5
Figure 4.	Typical application diagram as buck switching regulator	5
Figure 5.	Time diagram	10
Figure 6.	Parallel output connection	11
Figure 7.	Minimum gate resistance	12
Figure 8.	Driver and load equivalent circuits	13
Figure 9.	Power dissipation with $R_g = 2.2 \Omega$	14
Figure 10.	Power dissipation with $R_g = 4.7 \Omega$	14
Figure 11.	Output current vs. time	15
Figure 12.	Evaluation board layout: top view	16
Figure 13.	Evaluation board layout: bottom view	17
Figure 14.	PWM_x rise time vs supply voltage	18
Figure 15.	PWM_x rise time vs temperature	18
Figure 16.	PWM_x fall time vs supply voltage	18
Figure 17.	PWM_x fall time vs temperature	18
Figure 18.	Input-to-output delay time vs supply voltage	18
Figure 19.	Input-to-output delay time vs temperature	18
Figure 20.	Source resistance vs temperature	19
Figure 21.	Sink resistance vs temperature	19
Figure 22.	Output resistance vs current	19
Figure 23.	Operating supply current vs supply voltage (operating frequency = 100 kHz)	19
Figure 24.	Operating supply current vs supply voltage (operating frequency = 300 kHz)	19
Figure 25.	Operating supply current vs supply voltage (operating frequency = 500 kHz)	19
Figure 26.	Quiescent current vs temperature	20
Figure 27.	FLAT-16 package outline	21
Figure 28.	Flat-10 package outline	23
Figure 29.	Date code composition	24

IMPORTANT NOTICE – PLEASE READ CAREFULLY

STMicroelectronics NV and its subsidiaries (“ST”) reserve the right to make changes, corrections, enhancements, modifications, and improvements to ST products and/or to this document at any time without notice. Purchasers should obtain the latest relevant information on ST products before placing orders. ST products are sold pursuant to ST’s terms and conditions of sale in place at the time of order acknowledgement.

Purchasers are solely responsible for the choice, selection, and use of ST products and ST assumes no liability for application assistance or the design of Purchasers’ products.

No license, express or implied, to any intellectual property right is granted by ST herein.

Resale of ST products with provisions different from the information set forth herein shall void any warranty granted by ST for such product.

ST and the ST logo are trademarks of ST. All other product or service names are the property of their respective owners.

Information in this document supersedes and replaces information previously supplied in any prior versions of this document.

© 2019 STMicroelectronics – All rights reserved