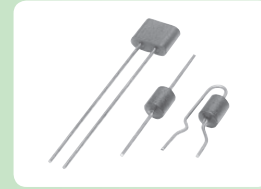


# Bead Inductors (Lead Type)

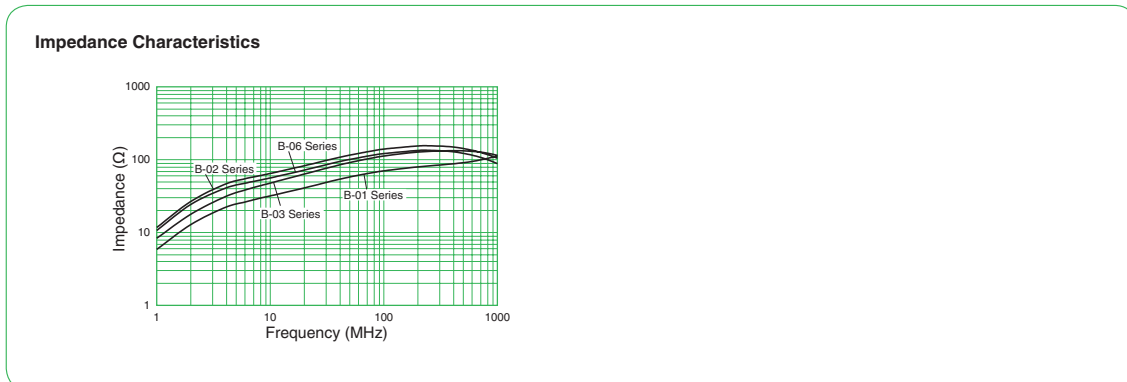
[RoHS Compliant]



Model	Rated current DC (A)	Impedance (Ω)	Operating temperature range (°C)
<b>B-01-Series</b>	5	2 (at 1 MHz)	-20~+70
<b>B-02-Series</b>		4 (at 1 MHz)	
<b>B-03-Series</b>		5 (at 1 MHz)	
<b>B-06-Series</b>		40 (at 10 MHz)	

Note: Rated current values are not guaranteed by impedance levels; these values are permissible levels when the lead wire temperature rise is 20°C.

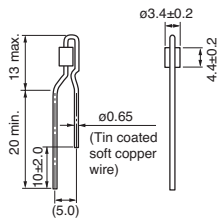
Model	Shape	Packaging
<b>B-01-R</b>	Single-bead, radial-lead	Bulk type (100 pcs./bag)
<b>B-01-RT</b>	Single-bead, radial-lead	Tape type (2000 pcs./reel)
<b>B-01-RTF</b>	Single-bead, radial-lead	Tape type (2000 pcs./box)
<b>B-01-RS</b>	Single-bead, radial-lead	Bulk type (100 pcs./bag)
<b>B-01-RTS</b>	Single-bead, radial-lead	Tape type (2000 pcs./reel)
<b>B-01-RTSF</b>	Single-bead, radial-lead	Tape type (2000 pcs./box)
<b>B-01-A</b>	Single-bead, axial-lead	Bulk type (100 pcs./bag)
<b>B-01-A1</b>	Single-bead, axial-lead	Bulk type (250 pcs./bag)
<b>B-01-A2</b>	Single-bead, axial-lead	Bulk type (250 pcs./bag)
<b>B-01-AT</b>	Single-bead, axial-lead	Tape type (5000 pcs./reel)
<b>B-01-ATF</b>	Single-bead, axial-lead	Tape type (1500 pcs./box)
<b>B-01-AT1F</b>	Single-bead, axial-lead	Tape type (2000 pcs./box)
<b>B-02-R</b>	Double-bead, radial-lead	Bulk type (100 pcs./bag)
<b>B-02-RT</b>	Double-bead, radial-lead	Tape type (2000 pcs./reel)
<b>B-02-RTF</b>	Double-bead, radial-lead	Tape type (1500 pcs./box)
<b>B-03-R</b>	Double-bead, radial-lead	Bulk type (100 pcs./bag)
<b>B-03-RT</b>	Double-bead, radial-lead	Tape type (2000 pcs./reel)
<b>B-06-R-25</b>	Double-bead, radial-lead	Bulk type (100 pcs./bag)
<b>B-06-RTF-25</b>	Double-bead, radial-lead	Tape type (1500 pcs./reel)
<b>B-06-R-50</b>	Double-bead, radial-lead	Bulk type (100 pcs./bag)
<b>B-06-RTF-50</b>	Double-bead, radial-lead	Tape type (1500 pcs./box)



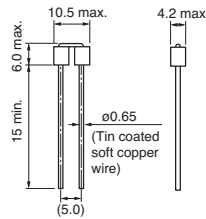
- All specifications in this catalog and production status of products are subject to change without notice. Prior to the purchase, please contact TOKIN for updated product data.
- Please request for a specification sheet for detailed product data prior to the purchase.
- Before using the product in this catalog, please read "Precautions" and other safety precautions listed in the printed version catalog.

Shape and Dimensions

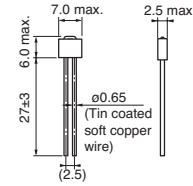
●B-01-R Series



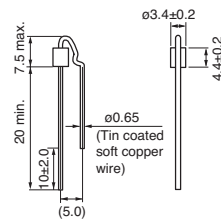
●B-02-R Series



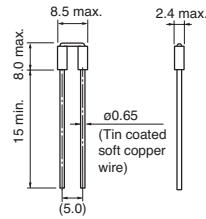
●B-06-R-25 Series



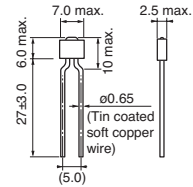
●B-01-RS Series



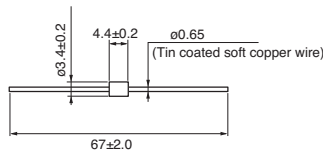
●B-03-R Series



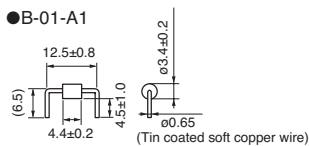
●B-06-R-50 Series



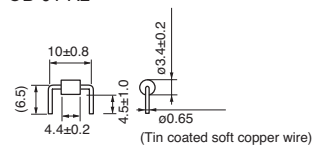
●B-01-A Series



●B-01-A1



●B-01-A2



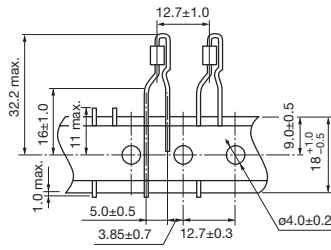
[mm]



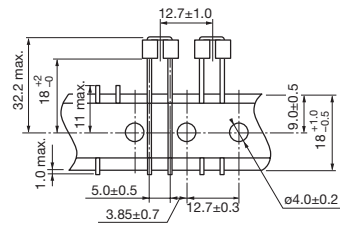
- All specifications in this catalog and production status of products are subject to change without notice. Prior to the purchase, please contact TOKIN for updated product data.
- Please request for a specification sheet for detailed product data prior to the purchase.
- Before using the product in this catalog, please read "Precautions" and other safety precautions listed in the printed version catalog.

**Tape and Reel Dimensions**

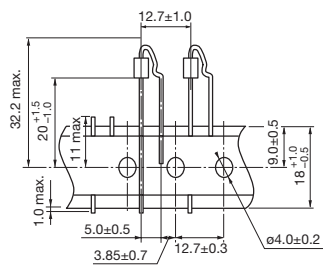
●B-01-RT • RTF



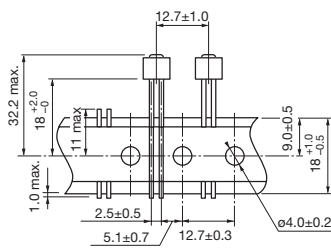
●B-02-RT • RTF/B-03-RT



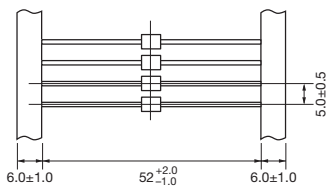
●B-01-RTS • RTSF



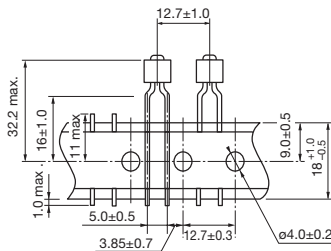
●B-06-RTF-25



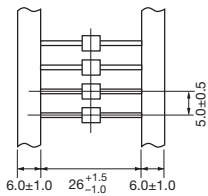
●B-01-AT • ATF



●B-06-RTF-50



●B-01-AT1F



[mm]



- All specifications in this catalog and production status of products are subject to change without notice. Prior to the purchase, please contact TOKIN for updated product data.
- Please request for a specification sheet for detailed product data prior to the purchase.
- Before using the product in this catalog, please read "Precautions" and other safety precautions listed in the printed version catalog.