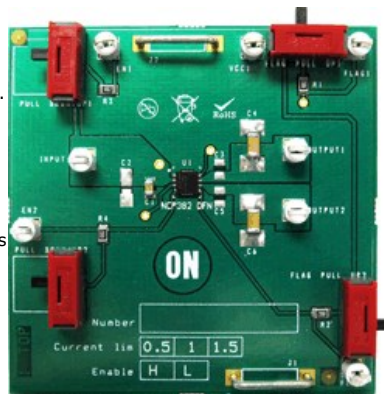




NCP382HMN20AGEVB: 2.0 A DFN Evaluation Board

The NCP382 is a single input dual outputs high side power distribution switch designed for applications where heavy capacitive loads and short circuits are likely to be encountered, incorporating two 80mΩ, P-channel MOSFETs in a single package.

The device limits the output current to a desired level by switching into a constant current mode when the output load exceeds the current limit threshold or a short is present. The current limit threshold is internally fixed. The power switches rise and fall times are controlled to minimize current ringing during switching. The FLAG logic output asserts low during overcurrent and over temperature conditions. The switch is controlled by a logic enable input active high or low.



Evaluation/Development Tool Information					
Product	Status	Compliance	Short Description	Parts Used	Action
NCP382HMN20AGEVB	Active	Pb-free	2.0 A DFN Evaluation Board	NCP382HMN20AATXG	Contact Local Sales Office

Technical Documents			
Type	Document Title	Document ID/Size	Rev
Eval Board: BOM	NCP382HMN20AGEVB Bill of Materials ROHS Compliant	NCP382HMN20AGEVB_BOM_ROHS.PDF - 58.0 KB	0
Eval Board: Gerber	NCP382HMN20AGEVB Gerber Layout Files (Zip Format)	NCP382HMN20AGEVB_GERBER.ZIP - 117.0 KB	0
Eval Board: Schematic	NCP382HMN20AGEVB Schematic	NCP382HMN20AGEVB_SCHEMATIC.PDF - 32.0 KB	0
Eval Board: Test Procedure	NCP382HMN20AGEVB Test Procedure	NCP382HMN20AGEVB_TEST_PROCEDURE.PDF - 53.0 KB	0
Video	Fixed Current-Limiting Power Distribution Switches Evaluation Boards - NCP382 Test Procedure	WVD17064/D	

Previously Viewed Products

Select Product...

Design Support

- Technical Documentation
- Design Resources & Documents
- Technical Support
- Sales Support

Featured Video

[Fixed Current-Limiting Power Distribution Switches Evaluation Boards - NCP382 Test Procedure](#)

Video player controls: Play, Stop, Previous, Next

[More Videos ...](#)

