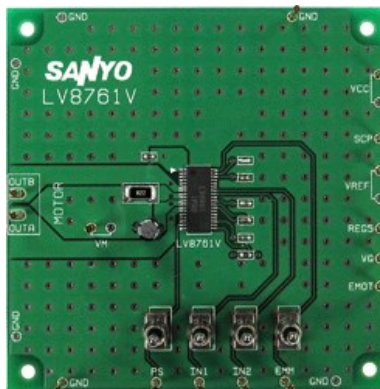




LV8761VGEVB: H-Bridge Driver Evaluation Board

The LV8761V is an H-bridge driver that can control four operation modes (forward, reverse, brake, and standby) of a motor. The low on-resistance, zero standby current, highly efficient IC is optimal for use in driving brushed DC motors for office equipment.



Features and Applications

Features

- Forward/reverse H-bridge motor driver: 1 channel
- Built-in current limiter circuit
- Built-in thermal protection circuit
- Built-in short-circuit protection function
- Unusual condition warning output pin
- Short-circuit protection circuit selectable from latch-type or auto reset-type

Evaluation/Development Tool Information

Product	Status	Compliance	Short Description	Parts Used	Action
LV8761VGEVB	Active	Pb-free	H-Bridge Driver Evaluation Board	LV8761V-TLM-E	» Contact Local Sales Office » Inventory

Technical Documents

Type	Document Title	Document ID/Size	Rev
Eval Board: BOM	LV8761VGEVB Bill of Materials ROHS Compliant	LV8761VGEVB_BOM_ROHS.PDF - 66 KB	0
Eval Board: Gerber	LV8761VGEVB Gerber Layout Files (Zip Format)	LV8761VGEVB_GERBER.ZIP - 279.0 KB	0
Eval Board: Schematic	LV8761VGEVB Schematic	LV8761VGEVB_SCHEMATIC.PDF - 167 KB	0
Eval Board: Test Procedure	LV8761VGEVB Test Procedure	LV8761VGEVB_TEST_PROCEDURE.PDF - 137 KB	1

Previously Viewed Products

Select Product... Clear List

Design Support

- Technical Documentation
- Design Resources & Documents
- Technical Support
- Sales Support

