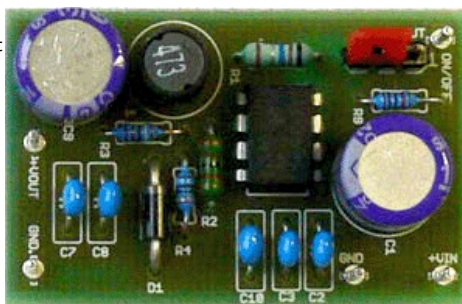




NCP3064PDBCKGEVB: PDIP8 Buck Demonstration Evaluation Board

The NCP3064 device supports a buck configuration with a wide input voltage range from 3.0V to 40.0V. The NCP3064 is a low cost converter that supports a peak current of 1.5A with a maximum duty cycle of 85.7%. The ON/OFF function allows turn the device to low consumption mode. Size: 44mm x 28mm x 16mm



Features and Applications

Features

- Input Voltage Range from 3.0 V to 40 V
- Logic Level Shutdown Capability
- Low Power Standby Mode, Typical 100 uA
- Output Switch Current to 1.5 A
- Adjustable Output Voltage Range
- 150 kHz Frequency Operation
- Precision 2% Reference
- Internal Thermal Shutdown Protection
- CyclebyCycle Current Limiting
- NCV Prefix for Automotive and Other Applications Requiring Site and Control Changes
- These are PbFree Devices

Evaluation/Development Tool Information

Product	Status	Compliance	Short Description	Parts Used	Action
NCP3064PDBCKGEVB	Active	Pb-free	PDIP8 Buck Demonstration Evaluation Board	NCP3064PG	» Contact Local Sales Office » Inventory

Technical Documents

Type	Document Title	Document ID/Size	Rev
Eval Board: BOM	NCP3064PDBCKGEVB Bill of Materials ROHS Compliant	NCP3064PDBCKGEVB_BOM_ROHS.PDF - 39.0 KB	1
Eval Board: Gerber	NCP3064PDBCKGEVB Gerber Layout Files (Zip Format)	NCP3064PDBCKGEVB_GERBER.ZIP - 22.0 KB	0
Eval Board: Schematic	NCP3064PDBCKGEVB Schematic	NCP3064PDBCKGEVB_SCHEMATIC.PDF - 130.0 KB	0
Eval Board: Test Procedure	NCP3064PDBCKGEVB Test Procedure	NCP3064PDBCKGEVB_TEST_PROCEDURE.PDF - 301.0 KB	0
Video	1.5 A Boost / Buck, Inverting Converter, Switching Regulator Evaluation Boards - NCP3064 Series	WVD17619/D	

Previously Viewed Products

Select Product... [Clear List](#)

Design Support

- Technical Documentation
- Design Resources & Documents
- Technical Support
- Sales Support

Featured Video

[1.5 A Boost / Buck, Inverting Converter, Switching Regulator Evaluation Boards - NCP3064 Series](#)



[More Videos ...](#)

