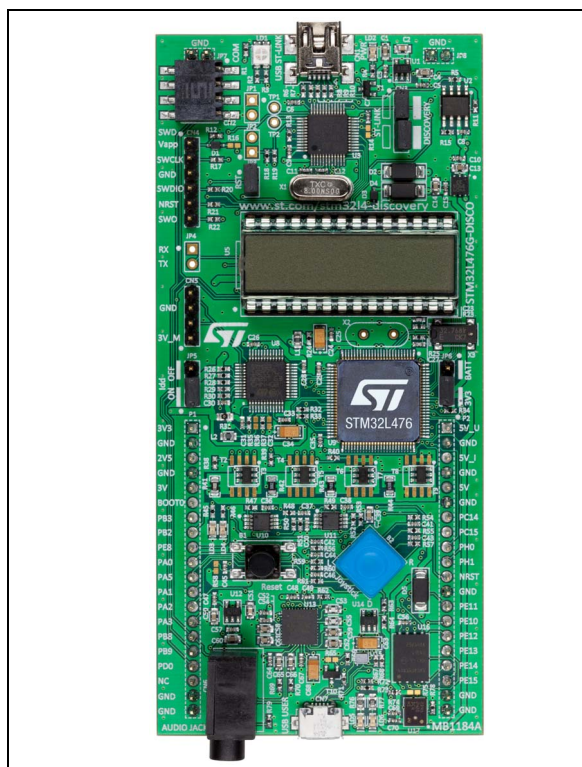


Features

- STM32L476VGT6 microcontroller featuring 1 Mbyte of Flash memory, 128 Kbytes of RAM in LQFP100 package
- On-board ST-LINK/V2-1 supporting USB re-enumeration capability
- Three different interfaces supported on USB:
 - Virtual com port
 - Mass storage
 - Debug port
- Mbed-enabled (mbed.org)
- LCD 24 segments, 4 commons in DIP 28 package
- Seven LEDs:
 - LD1 (red/green) for USB communication
 - LD2 (red) for 3.3 V power on
 - LD3 Over current (red)
 - LD4 (red), LD5 (green) two user LEDs
 - LD6 (green), LD7 (red) USB OTG FS LEDs
- Pushbutton (reset)
- Four directions Joystick with selection
- USB OTG FS with micro-AB connector
- SAI Audio DAC, Stereo with output jack
- Digital Microphone MEMS Accelerometer and magnetometer Mems
- Gyroscope MEMS
- 128-Mbit Quad-SPI Flash memory
- MCU current ammeter with 4 ranges and auto calibration
- Connector for external board or RF-EEPROM
- Four power supply options:
 - ST-LINK/V2-1
 - USB FS connector
 - External 5 V
 - CR2032 battery (not provided)
- Extension connectors
- Comprehensive free software including a variety of examples, part of STM32Cube package



1. Picture not contractual

Description

The 32L476GDISCOVERY helps users to develop and share applications with the STM32L4 ultra-low-power microcontrollers. The Discovery kit combines STM32L476 features with LCD, LEDs, audio DAC, sensors (microphone, 3 axis gyroscope, 6 axis compass), joystick, USB OTG, Quad-SPI Flash memory, expansion and probing connectivity. It includes an embedded Ammeter which measures the MCU consumption in low power modes. An external board can be connected thanks to extension and probing connectors.



1 System requirements

- Windows® OS (XP, 7, 8)
- USB type A to Mini-B cable

2 Development toolchains

- IAR EWARM (IAR Embedded Workbench®)
- Keil® MDK-ARM™
- GCC-based IDEs (free AC6: SW4STM32, Atollic® TrueSTUDIO®,...)
- ARM® mbed™ online

3 Demonstration software

The demonstration software is preloaded in the STM32L476VGT6 Flash memory. The latest version of the demonstration source code and associated documentation can be downloaded from www.st.com/stm32l4-discovery.

4 Ordering information

To order the Discovery kit based on the STM32L476VG MCU, use the order code: STM32L476G-DISCO.

5 Revision history

Table 1. Document revision history

Date	Revision	Changes
30-Jun-2015	1	Initial release.
10-Jul-2015	2	Updated Section : Features adding 1 bullet: Mbed-enabled, Added mbed-enabled logo. Updated Section 1: System requirements Updated Section 2: Development toolchains

IMPORTANT NOTICE – PLEASE READ CAREFULLY

STMicroelectronics NV and its subsidiaries ("ST") reserve the right to make changes, corrections, enhancements, modifications, and improvements to ST products and/or to this document at any time without notice. Purchasers should obtain the latest relevant information on ST products before placing orders. ST products are sold pursuant to ST's terms and conditions of sale in place at the time of order acknowledgement.

Purchasers are solely responsible for the choice, selection, and use of ST products and ST assumes no liability for application assistance or the design of Purchasers' products.

No license, express or implied, to any intellectual property right is granted by ST herein.

Resale of ST products with provisions different from the information set forth herein shall void any warranty granted by ST for such product.

ST and the ST logo are trademarks of ST. All other product or service names are the property of their respective owners.

Information in this document supersedes and replaces information previously supplied in any prior versions of this document.

© 2015 STMicroelectronics – All rights reserved