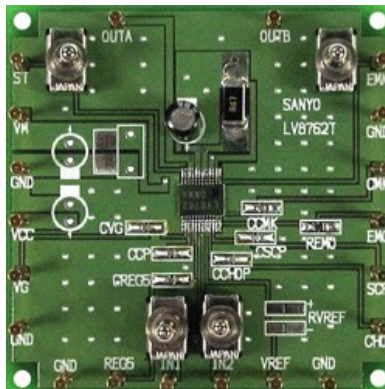




LV8762TEVB: Single-Channel H-Bridge Driver Evaluation Board

The LV8762T is a single channel H-bridge driver that can control four operation modes (forward, reverse, brake, and standby) of a motor. This IC is optimal for use in driving brushed DC motor for office equipment.



Features and Applications

Features

- Forward/reverse H-bridge motor driver: 1 channel
- Built-in current limiter
- Built-in thermal protection circuit
- Single power supply
- Built-in short-circuit protection function (Selectable from latch-type or auto-reset-type)
- Iout max = 1A
- Current limit mask function
- Alert signal output

Evaluation/Development Tool Information

Product	Status	Compliance	Short Description	Parts Used	Action
LV8762TEVB	Active		Single-Channel H-Bridge Driver Evaluation Board	LV8762T-TLM-H	» Contact Local Sales Office » Inventory

Technical Documents

Type	Document Title	Document ID/Size	Rev
Eval Board: BOM	LV8762TEVB Bill of Materials	LV8762TEVB_BOM.PDF - 66 KB	0
Eval Board: Gerber	LV8762TEVB Gerber Layout Files (Zip Format)	LV8762TEVB_GERBER.ZIP - 45.0 KB	0
Eval Board: Schematic	LV8762TEVB Schematic	LV8762TEVB_SCHEMATIC.PDF - 254 KB	0
Eval Board: Test Procedure	LV8762TEVB Test Procedure	LV8762TEVB_TEST_PROCEDURE.PDF - 241 KB	1
Video	Single Channel H-Bridge Driver Evaluation Board - LV8762TEVB	WVD17629/D	

Previously Viewed Products

Select Product...

[Clear List](#)

Design Support

[Technical Documentation](#)

[Design Resources & Documents](#)

[Technical Support](#)

[Sales Support](#)

Featured Video

[Single Channel H-Bridge Driver Evaluation Board - LV8762TEVB](#)



[More Videos ...](#)

