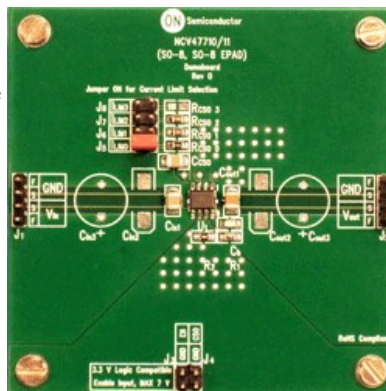




## NV47711PDAJGEVB: 350 mA LDO Regulator Evaluation Board

The NCV47711 is a 350 mA output current integrated low dropout regulator designed for use in harsh automotive environments. It includes wide operating temperature and input voltage ranges. The device is offered with adjustable voltage versions available in 3% output voltage accuracy. It has a high peak input voltage tolerance and reverse input voltage protection. It also provides overcurrent protection, overtemperature protection and enable for control of the state of the output voltage. The integrated current sense feature provides diagnosis and system protection functionality. The current limit of the device is adjustable by resistor connected to CSO pin. Voltage on CSO pin is proportional to output current.



Evaluation/Development Tool Information					
Product	Status	Compliance	Short Description	Parts Used	Action
NV47711PDAJGEVB	Active	Pb-free	350 mA LDO Regulator Evaluation Board	NCV47711PDAJR2G	<a href="#">» Contact Local Sales Office</a> <a href="#">» Inventory</a>

Technical Documents			
Type	Document Title	Document ID/Size	Rev
Eval Board: BOM	NV47711PDAJGEVB Bill of Materials ROHS Compliant	NV47711PDAJGEVB_BOM_ROHS.PDF - 56.0 KB	0
Eval Board: Gerber	NV47711PDAJGEVB Gerber Layout Files (Zip Format)	NV47711PDAJGEVB_GERBER.ZIP - 61.0 KB	0
Eval Board: Schematic	NV47711PDAJGEVB Schematic	NV47711PDAJGEVB_SCHEMATIC.PDF - 123.0 KB	0
Eval Board: Test Procedure	NV47711PDAJGEVB Test Procedure	NV47711PDAJGEVB_TEST_PROCEDURE.PDF - 256.0 KB	0
Video	350 mA LDO Regulator Evaluation Board - NV47711PDAJGEVB	WVD17617/D	

Previously Viewed Products

Select Product...

[Clear List](#)

- Design Support**
- Technical Documentation
- Design Resources & Documents
- Technical Support
- Sales Support

**Featured Video**

350 mA LDO Regulator Evaluation Board - NV47711PDAJGEVB

Video player controls: Play, Pause, Stop, Previous, Next

[More Videos ...](#)

