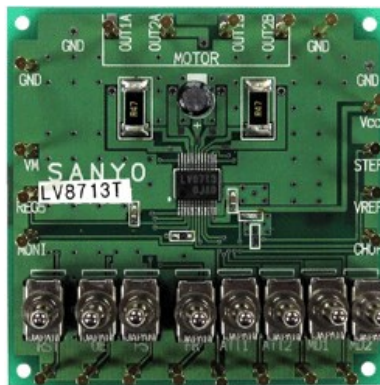




LV8713TGEVB: Microstepping Motor Driver IC Evaluation Board

The LV8713T is a microstepping motor driver IC with built-in translator for easy operation. It supports full-step, half-step, 1/16-step, and 1/32-step resolution. The LV8713T is optimal for driving stepping motor of scanner and small printer.



Features and Applications

Features

- Single-channel PWM constant-current control stepping motor driver incorporated
- Microstepping is configurable to the following modes: Full-step, half-step, 1/16-step, or 1/32-step
- CLK-IN input facilitates the control of microstepping
- Thermal shutdown circuit and low voltage detecting circuit incorporated

Evaluation/Development Tool Information

Product	Status	Compliance	Short Description	Parts Used	Action
LV8713TGEVB	Active	Pb-free	Microstepping Motor Driver IC Evaluation Board	LV8713T-TLM-H	» Contact Local Sales Office » Inventory

Technical Documents

Type	Document Title	Document ID/Size	Rev
Eval Board: BOM	LV8713TGEVB Bill of Materials ROHS Compliant	LV8713TGEVB_BOM_ROHS.PDF - 64 KB	0
Eval Board: Gerber	LV8713TGEVB Gerber Layout Files (Zip Format)	LV8713TGEVB_GERBER.ZIP - 135.0 KB	0
Eval Board: Schematic	LV8713TGEVB Schematic	LV8713TGEVB_SCHEMATIC.PDF - 156 KB	0
Eval Board: Test Procedure	LV8713TGEVB Test Procedure	LV8713TGEVB_TEST_PROCEDURE.PDF - 132 KB	1

Previously Viewed Products

Select Product...

Design Support

- Technical Documentation
- Design Resources & Documents
- Technical Support
- Sales Support

