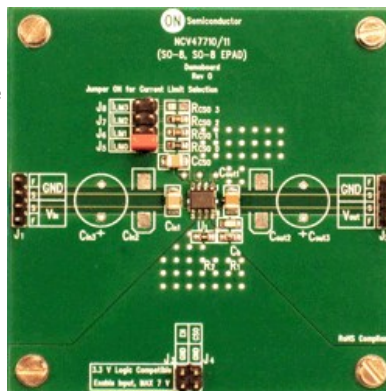




NV47710PDAJGEVB: 350 mA LDO Regulator Evaluation Board

The NCV47710 is a 350 mA output current integrated low dropout regulator designed for use in harsh automotive environments. It includes wide operating temperature and input voltage ranges. The device is offered with adjustable voltage versions available in 6% output voltage accuracy. It has a high peak input voltage tolerance and reverse input voltage protection. It also provides overcurrent protection, overtemperature protection and enable for control of the state of the output voltage. The integrated current sense feature provides diagnosis and system protection functionality. The current limit of the device is adjustable by resistor connected to CSO pin. Voltage on CSO pin is proportional to output current.



Evaluation/Development Tool Information

Product	Status	Compliance	Short Description	Parts Used	Action
NV47710PDAJGEVB	Active	Pb-free	350 mA LDO Regulator Evaluation Board	NCV47710PDAJR2G	» Contact Local Sales Office » Inventory

Technical Documents

Type	Document Title	Document ID/Size	Rev
Eval Board: BOM	NV47710PDAJGEVB Bill of Materials ROHS Compliant	NV47710PDAJGEVB_BOM_ROHS.PDF - 56.0 KB	0
Eval Board: Gerber	NV47710PDAJGEVB Gerber Layout Files (Zip Format)	NV47710PDAJGEVB_GERBER.ZIP - 61.0 KB	0
Eval Board: Schematic	NV47710PDAJGEVB Schematic	NV47710PDAJGEVB_SCHEMATIC.PDF - 117.0 KB	0
Eval Board: Test Procedure	NV47710PDAJGEVB Test Procedure	NV47710PDAJGEVB_TEST_PROCEDURE.PDF - 257.0 KB	0

Previously Viewed Products

Select Product...

[Clear List](#)

- Design Support**
- [Technical Documentation](#)
- [Design Resources & Documents](#)
- [Technical Support](#)
- [Sales Support](#)

