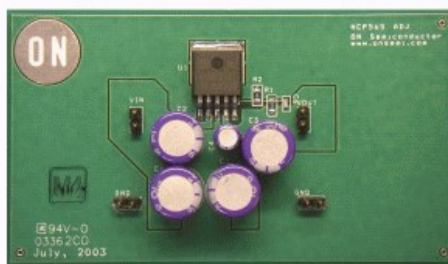




NCP565VADJEVB: 1.5 A Adjustable Output Voltage Linear Regulator Evaluation Board

The NCP565 low dropout linear regulator will provide 1.5 A at a fixed output voltage and an adjustable voltage down to 0.9 V. The fast loop response and low dropout voltage makes this regulator ideal for applications where low voltage and good load transient response are important.



Features and Applications

Features

- 3.3 V output
- Minimized parasitic elements
- Low ESR and reduced instantaneous output voltage drop under transient load conditions

Evaluation/Development Tool Information

Product	Status	Compliance	Short Description	Parts Used	Action
NCP565VADJEVB	Active		1.5 A Adjustable Output Voltage Linear Regulator Evaluation Board	NCP565D2TG	» Contact Local Sales Office » Inventory

Technical Documents

Type	Document Title	Document ID/Size	Rev
Eval Board: BOM	NCP565VADJEVB BILL OF MATERIALS	NCP565VADJEVB_BOM.REV1.PDF - 13.0 KB	1
Eval Board: Gerber	NCP565VADJEVB GERBER LAYOUT FILES (ZIP FORMAT)	NCP565VADJEVB_GERBER.REV1.ZIP - 65.0 KB	1
Eval Board: Schematic	NCP565VADJEVB SCHEMATIC	NCP565VADJEVB_SCHEMATIC.REV1.PDF - 60.0 KB	1
Eval Board: Test Procedure	NCP565VADJEVB TEST PROCEDURE	NCP565VADJEVB_TEST_PROCEDURE.REV1.PDF - 60.0 KB	1
Video	1.5 A Adjustable Output Voltage Linear Regulator Evaluation Board - NCP565VADJEVB	WVD17655/D	

Previously Viewed Products

Select Product... [Clear List](#)

Design Support

- Technical Documentation
- Design Resources & Documents
- Technical Support
- Sales Support

Featured Video

[1.5 A Adjustable Output Voltage Linear Regulator Evaluation Board - NCP565VADJEVB](#)



[More Videos ...](#)

