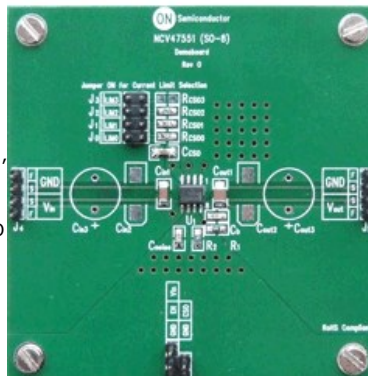




NCV47551DAJGEVB: Low Noise LDO Regulator with Adjustable Current Limit and Voltage Evaluation Board

The NCV47551DAJGEVB evaluation board is designed to quickly assess the NCV47551 device, a low noise low output current integrated low dropout regulator designed for use in harsh automotive environments. The device includes wide operating temperature and input voltage ranges. The device is offered with adjustable voltage versions available in 3% output voltage accuracy. It has a high peak input voltage tolerance and reverse input voltage protection. It also provides overcurrent protection, overtemperature protection and enable for control of the state of the output voltage. The integrated current sense feature provides diagnosis and system protection functionality. The current limit of the device is adjustable by resistor connected to CSO pin. Voltage on CSO pin is proportional to output current.



Evaluation/Development Tool Information

Product	Status	Compliance	Short Description	Parts Used	Action
NCV47551DAJGEVB	Active	Pb-free	Low Noise LDO Regulator with Adjustable Current Limit and Voltage Evaluation Board	NCV47551DAJR2G	» Contact Local Sales Office » Inventory

Technical Documents

Type	Document Title	Document ID/Size	Rev
Eval Board: BOM	NCV47551DAJGEVB Bill of Materials ROHS Compliant	NCV47551DAJGEVB_BOM_ROHS - 118 KB	0
Eval Board: Gerber	NCV47551DAJGEVB Gerber Layout Files (Zip Format)	NCV47551DAJGEVB_GERBER - 60 KB	0
Eval Board: Schematic	NCV47551DAJGEVB Schematic	NCV47551DAJGEVB_SCHEMATIC - 134 KB	0
Eval Board: Test Procedure	NCV47551DAJGEVB Test Procedure	NCV47551DAJGEVB_TEST_PROCEDURE - 676 KB	0
Video	Low Noise LDO Regulator with Adjustable Current Limit and Voltage Evaluation Board - NCV47551DAJGEVB	TND6134/D	

Previously Viewed Products

Select Product...

Design Support

- Technical Documentation
- Design Resources & Documents
- Technical Support
- Sales Support

Featured Video

Low Noise LDO Regulator with Adjustable Current Limit and Voltage Evaluation Board - NCV47551DAJGEVB

Video player controls: Play, Stop, Previous, Next. [More Videos ...](#)

