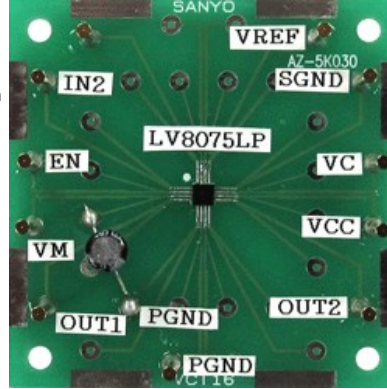




LV8075LPGEVB: Low Voltage Bidirectional DC Motor Driver Evaluation Board

The LV8075LP is a low voltage bidirectional DC motor driver with a typical input voltage of 2.5 to 5.5 V and output currents up to 500mA. The unique output full-bridge incorporates source-side linear operation to allow a constant voltage across the motor coil. This regulated output minimizes motor voltage change due to $I \times R_{DS(ON)}$ variation and battery voltage tolerance. Internal protection circuitry includes thermal shutdown, under voltage lockout.



Features and Applications

Features

- 500mA output peak rating
- Low power standby mode
- Built-in thermal protection circuit and under-voltage detection protection circuit

Evaluation/Development Tool Information

Product	Status	Compliance	Short Description	Parts Used	Action
LV8075LPGEVB	Active	Pb-free	Low Voltage Bidirectional DC Motor Driver Evaluation Board	LV8075LP-E , LV8075LP-TE-L-E	» Contact Local Sales Office » Inventory

Technical Documents

Type	Document Title	Document ID/Size	Rev
Eval Board: BOM	LV8075LPGEVB Bill of Materials ROHS Compliant	LV8075LPGEVB_BOM_ROHS.PDF - 14 KB	0
Eval Board: Gerber	LV8075LPGEVB Gerber Layout Files (Zip Format)	LV8075LPGEVB_GERBER.ZIP - 20.0 KB	0
Eval Board: Schematic	LV8075LPGEVB Schematic	LV8075LPGEVB_SCHEMATIC.PDF - 111 KB	0
Eval Board: Test Procedure	LV8075LPGEVB Test Procedure	LV8075LPGEVB_TEST_PROCEDURE.PDF - 550 KB	1

Previously Viewed Products

Select Product... [Clear List](#)

Design Support

- » [Technical Documentation](#)
- » [Design Resources & Documents](#)
- » [Technical Support](#)
- » [Sales Support](#)

