



SANYO Semiconductors

DATA SHEET

Thick-Film Hybrid IC

STK404-100SC-E — 1-channel class AB audio power IC, 90W

Overview

The STK404-100SC-E series is hybrid IC for the audio power amplifier that mounts discrete components as the audio power amplifier circuit in small space using the original Insulated Metal Substrate Technology IMST. The compact package has been achieved by adopting the low thermal resistance substrate (our conventional model kind ratio).

Applications

- Audio power amplifiers.

Features

- Pin-to-pin compatible outputs ranging from 90W to 180W
- Miniature package (46.6mm×25.5mm×8.5mm, 59.2mm×25.5mm×8.5mm)
- Output load impedance $R_L=6\Omega$ supported.
- Allowable load shorted time: 0.3s
- Allows the use of predesigned applications for standby, mute, and the load short protection circuit.

Series Models

	STK404-100SC-E	STK404-120SC-E	STK404-130SC-E	STK404-140SC-E
Output 1 (10%/1kHz)	90W×1ch	120W×1ch	150W×1ch	180W×1ch
Output 2 (0.4%/20Hz to 20kHz)	60W×1ch	80W×1ch	100W×1ch	120W×1ch
Maximum rated V_{CC} max(no sig.)	±55V	±65V	±70V	±78V
Maximum rated V_{CC} (6Ω)	±51V	±59V	±64V	±73V
Recommended operating V_{CC} (6Ω)	±35V	±41V	±45V	±51V
Dimensions (excluding pin height)	46.6mm×25.5mm×8.5mm		59.2mm×25.5mm×8.5mm	

■ Any and all SANYO Semiconductor Co.,Ltd. products described or contained herein are, with regard to "standard application", intended for the use as general electronics equipment (home appliances, AV equipment, communication device, office equipment, industrial equipment etc.). The products mentioned herein shall not be intended for use for any "special application" (medical equipment whose purpose is to sustain life, aerospace instrument, nuclear control device, burning appliances, transportation machine, traffic signal system, safety equipment etc.) that shall require extremely high level of reliability and can directly threaten human lives in case of failure or malfunction of the product or may cause harm to human bodies, nor shall they grant any guarantee thereof. If you should intend to use our products for applications outside the standard applications of our customer who is considering such use and/or outside the scope of our intended standard applications, please consult with us prior to the intended use. If there is no consultation or inquiry before the intended use, our customer shall be solely responsible for the use.

■ Specifications of any and all SANYO Semiconductor Co.,Ltd. products described or contained herein stipulate the performance, characteristics, and functions of the described products in the independent state, and are not guarantees of the performance, characteristics, and functions of the described products as mounted in the customer's products or equipment. To verify symptoms and states that cannot be evaluated in an independent device, the customer should always evaluate and test devices mounted in the customer's products or equipment.

SANYO Semiconductor Co., Ltd.

www.semiconductor-sanyo.com/network

STK404-100SC-E

Specifications

Absolute Maximum Ratings at $T_a = 25^\circ\text{C}$ (excluding rated temperature items), $T_c = 25^\circ\text{C}$ unless otherwise specified

Parameter	Symbol	Conditions	Ratings	Unit
Power supply voltage 1	$V_{CC \text{ max1}}$	Non-signal	± 55	V
Power supply voltage 2	$V_{CC \text{ max2}}$	Signal, $R_L = 6\Omega$	± 51	V
Thermal detector maximum voltage	V_p	1-4pin	16	V
Thermal detector maximum current	I_p	1-4pin	30	mA
Thermal resistance	θ_{j-c}	Per power transistor	1.7	$^\circ\text{C/W}$
Junction temperature	$T_j \text{ max}$	Should satisfy $T_j \text{ max}$ and $T_c \text{ max}$	150	$^\circ\text{C}$
Operating IC substrate temperature	$T_c \text{ max}$		125	$^\circ\text{C}$
Storage temperature	T_{stg}		-30 to +125	$^\circ\text{C}$
Allowable load shorted time *4	t_s	$V_{CC} = \pm 35\text{V}$, $R_L = 6\Omega$, $f = 50\text{Hz}$, $P_O = 60\text{W}$	0.3	s

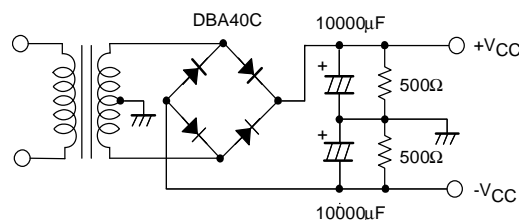
Electrical Characteristics at $T_c = 25^\circ\text{C}$, $R_L = 6\Omega$, $R_g = 600\Omega$, $V_G = 30\text{dB}$, non-inductive load R_L , unless otherwise specified

Parameter	Symbol	Conditions *2					Ratings			unit
		V_{CC} (V)	f (Hz)	P_O (W)	THD (%)		min	typ	max	
Output power *1	$P_O (1)$	± 35	20 to 20k		0.4		60			W
	$P_O (2)$	± 35	1k		10			90		
Frequency characteristics *1	f_L, f_H	± 35		1.0		+0 -3dB	20 to 20k			Hz
Input impedance	r_i	± 35	1k	1.0				55		$k\Omega$
Output noise voltage *3	V_{NO}	± 42				$R_g = 10k\Omega$		1.2		mVrms
Output neutral voltage	V_N	± 42					-100	0	+100	mV
Quiescent current	I_{CCO}	± 42				No load			50	mA
Thermal detector resistance	R_p	$T_p = 25^\circ\text{C}$, 1-4pin						470		Ω
Thermal detector operate temperature	T_p	$R_p = 4.7k\Omega$, 1-4pin						145		$^\circ\text{C}$

[Remarks]

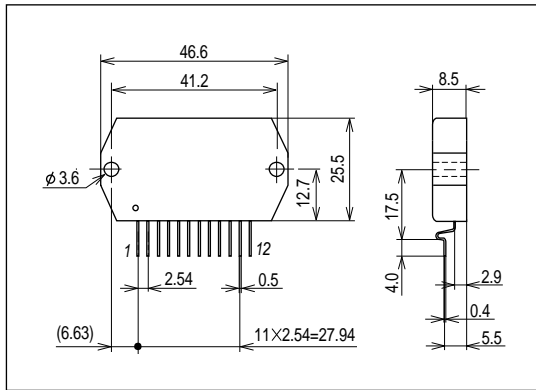
- *1. Unless otherwise specified, use a constant-voltage power supply to supply power when inspections are carried out.
- *2. Thermal Detector temperature ($+145^\circ\text{C} \pm 5^\circ\text{C}$) indicates the value at unusual operation, therefore, does not indicate the guaranteed value at usual operation.
Thermal Detector is PRF21series (AS characteristic) manufactured by MURATA.
- *3. The output noise voltage values shown are peak values read with a VTVM. However, an AC stabilized (50Hz) power supply should be used to minimize the influence of AC primary side flicker noise on the reading.
- *4. Use the designated transformer power supply circuit shown in the figure below for the measurement of allowable load shorted time and output noise voltage.
- *5. Thermal design must be implemented based on the conditions under which the customer's end products are expected to operate on the market.
- *6 Weight of 1 HIC: 12.6g
Outer carton dimensions (W×L×H): 420mm×233mm×277mm

Designated transformer power supply
(MG-250 equivalent)

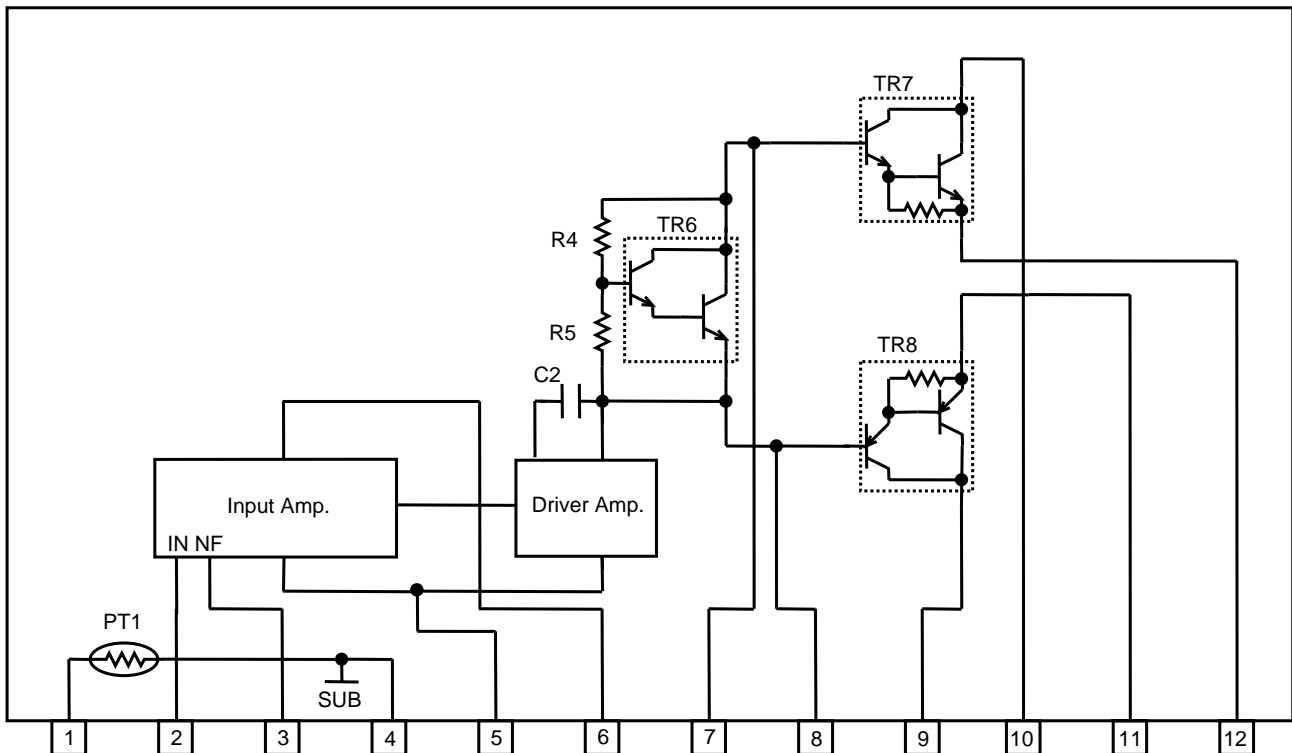


Package Dimensions

unit:mm (typ)

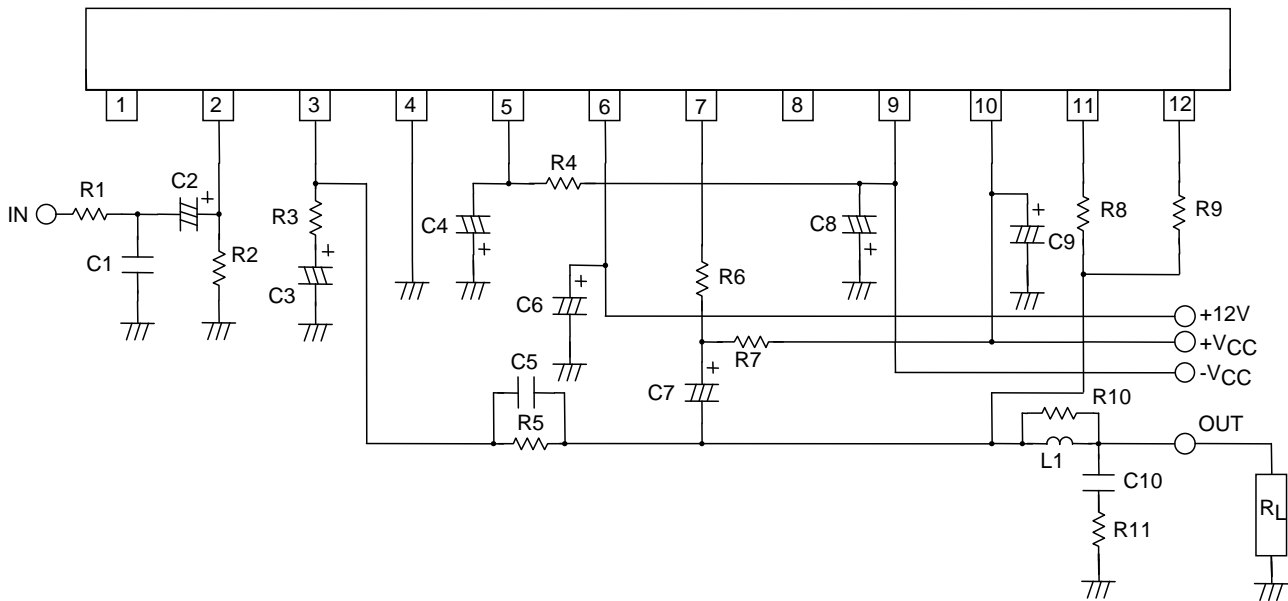


Equivalent Circuit

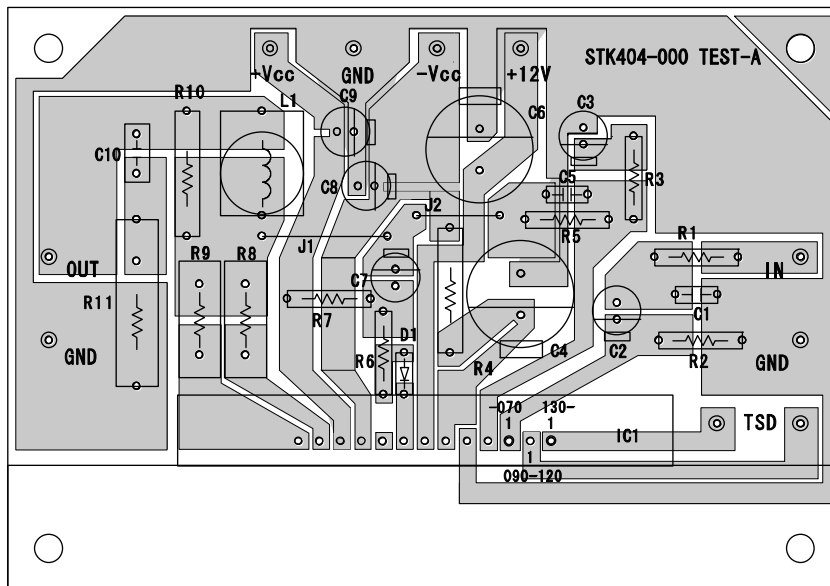


STK404-100SC-E

Application Circuit



PCB Layout Example



STK404-100SC-E

PCB Parts List

Type(IC1) *1	STK404-100	STK404-120	STK404-130	STK404-140
Position of ①pin	Second from the right end	Second from the right end	The right end	The right end
Location				
R1	1k Ω	←*2	←	←
R2	56k Ω	←	←	←
R3	1.8k Ω	←	←	←
R4	100 Ω /1W	←	←	←
R5	56k Ω	←	←	←
R6	4.7k Ω /1W	4.7k Ω /1W	5.1k Ω /1W	8.2k Ω /1W
R7	4.7k Ω /1W	4.7k Ω /1W	5.1k Ω /1W	8.2k Ω /1W
R8	0.22 Ω /5W	←	←	←
R9	0.22 Ω /5W	←	←	←
R10	4.7 Ω /1W	←	←	←
R11	4.7 Ω /1W	←	←	←
C1	470pF	←	←	←
C2	2.2 μ F/50V	←	←	←
C3	10 μ F/50V	←	←	←
C4	100 μ F/100V	←	←	←
C5	3pF	←	←	←
C6	100 μ F/50V	←	←	←
C7	47 μ F/100V	←	←	←
C8	10 μ F/100V	←	←	←
C9	10 μ F/100V	←	←	←
C10	0.1 μ F	←	←	←
D1	short	←	←	←
L1	2.2 μ H	←	←	←
J1	15mm	←	←	←
J2	10mm	←	←	←

*1 There is a model from which the sign (S, C, SC etc) is added to the end of the product name.

If it is a product of this output, Parts List is same.

*2 ←: Same as left

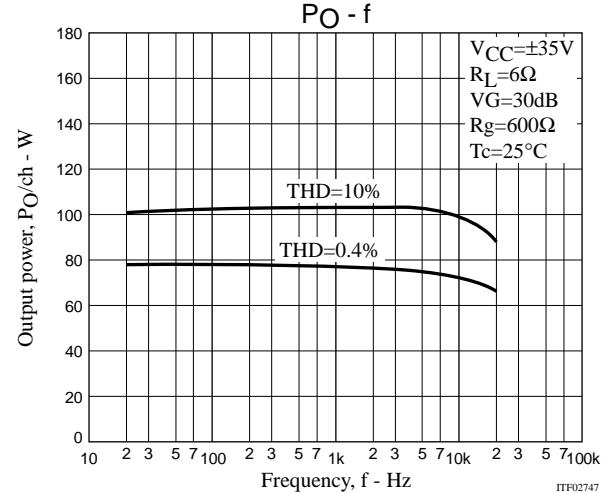
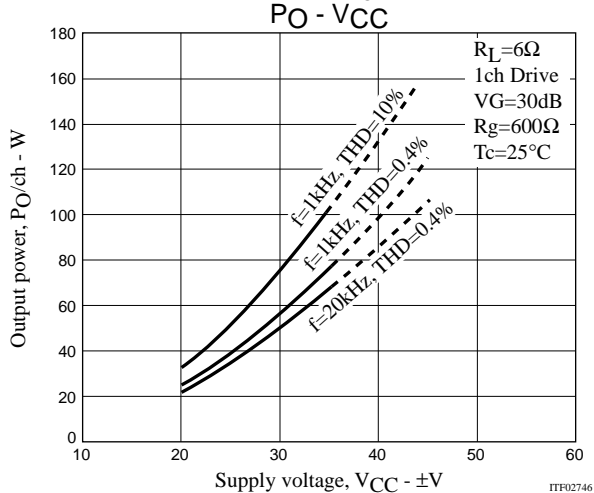
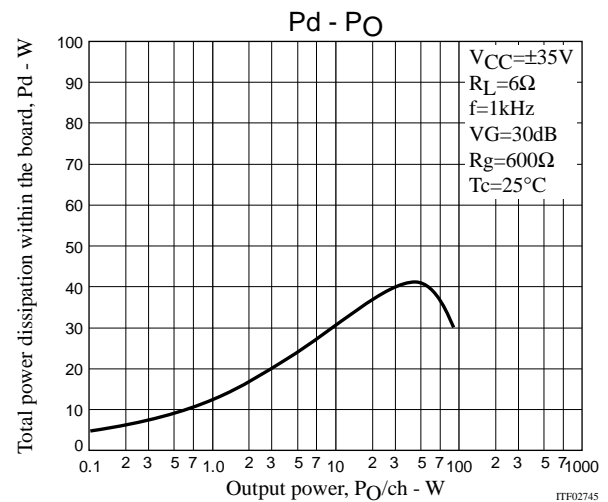
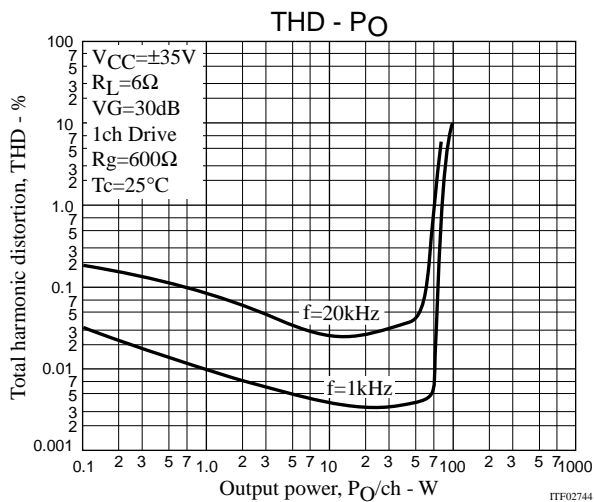
STK404-100SC-E

Pin Layout

[STK404-100SC sr Pin Layout]

1ch class-AB		1	2	3	4	5	6	7	8	9	10	11	12
		1ch classAB/2.54mm											
STK404-100SC-E 90W/JEITA STK404-120SC-E 120W/JEITA		P T +	I N / C H 1	N F / C H 1	S U B • P T -	- P R E	+ 1 2 V	+ V B O O T	N C	- V C C	+ V C C	O U T / C H 1 -	O U T / C H 1 +
	1	2	3	4	5	6	7	8	9	10	11	12	13
		1ch classAB/2.54mm											
STK404-130SC-E 150W/JEITA STK404-140SC-E 180W/JEITA	P T -	P T +	I N / C H 1	N F / C H 1	S U B • P T -	- P R E	+ 1 2 V	+ V B O O T	N C	- V C C	+ V C C	O U T / C H 1 -	O U T / C H 1 +

Characteristic of Evaluation Board



STK404-100SC-E

[Thermal Design Example for STK404-100SC-E]

The thermal resistance, θ_{c-a} , of the heat sink for total power dissipation, P_d , within the hybrid IC is determined as follows.

Condition 1: The hybrid IC substrate temperature, T_c , must not exceed 125°C.

$$P_d \times \theta_{c-a} + T_a < 125^\circ\text{C} \quad (1)$$

T_a : Guaranteed ambient temperature for the end product

Condition 2: The junction temperature, T_j , of each power transistor must not exceed 150°C.

$$P_d \times \theta_{c-a} + P_d/N \times \theta_{j-c} + T_a < 150^\circ\text{C} \quad (2)$$

N : Number of power transistors

θ_{j-c} : Thermal resistance per power transistor

However, the power dissipation, P_d , for the power transistors shall be allocated equally among the number of power transistors.

The following inequalities result from solving equations (1) and (2) for θ_{c-a} .

$$\theta_{c-a} < (125 - T_a)/P_d \quad (1)'$$

$$\theta_{c-a} < (150 - T_a)/P_d - \theta_{j-c}/N \quad (2)'$$

Values that satisfy these two inequalities at the same time represent the required heat sink thermal resistance.

When the following specifications have been stipulated, the required heat sink thermal resistance can be determined from formulas (1)' and (2)'.

- | | |
|----------------------------------|----------|
| • Supply voltage | V_{CC} |
| • Load resistance | R_L |
| • Guaranteed ambient temperature | T_a |

[Example]

When the IC supply voltage, $V_{CC}=\pm 35\text{V}$ and R_L is 6Ω , the total power dissipation, P_d , within the hybrid IC, will be a maximum of 42W at 1kHz for a continuous sine wave signal according to the P_d - P_o characteristics.

For the music signals normally handled by audio amplifiers, a value of $1/8P_{O\text{ max}}$ is generally used for P_d as an estimate of the power dissipation based on the type of continuous signal. (Note that the factor used may differ depending on the safety standard used.)

This is:

$$P_d = 28\text{W} \quad (\text{when } 1/8P_{O\text{ max}} = 7.5\text{W}).$$

The number of power transistors in audio amplifier block of these hybrid ICs, N , is 2, and the thermal resistance per transistor, θ_{j-c} , is 1.7°C/W . Therefore, the required heat sink thermal resistance for a guaranteed ambient temperature, T_a , of 50°C will be as follows.

$$\begin{aligned} \text{From formula (1)'} \quad \theta_{c-a} &< (125 - 50)/28 \\ &< 2.67 \end{aligned}$$

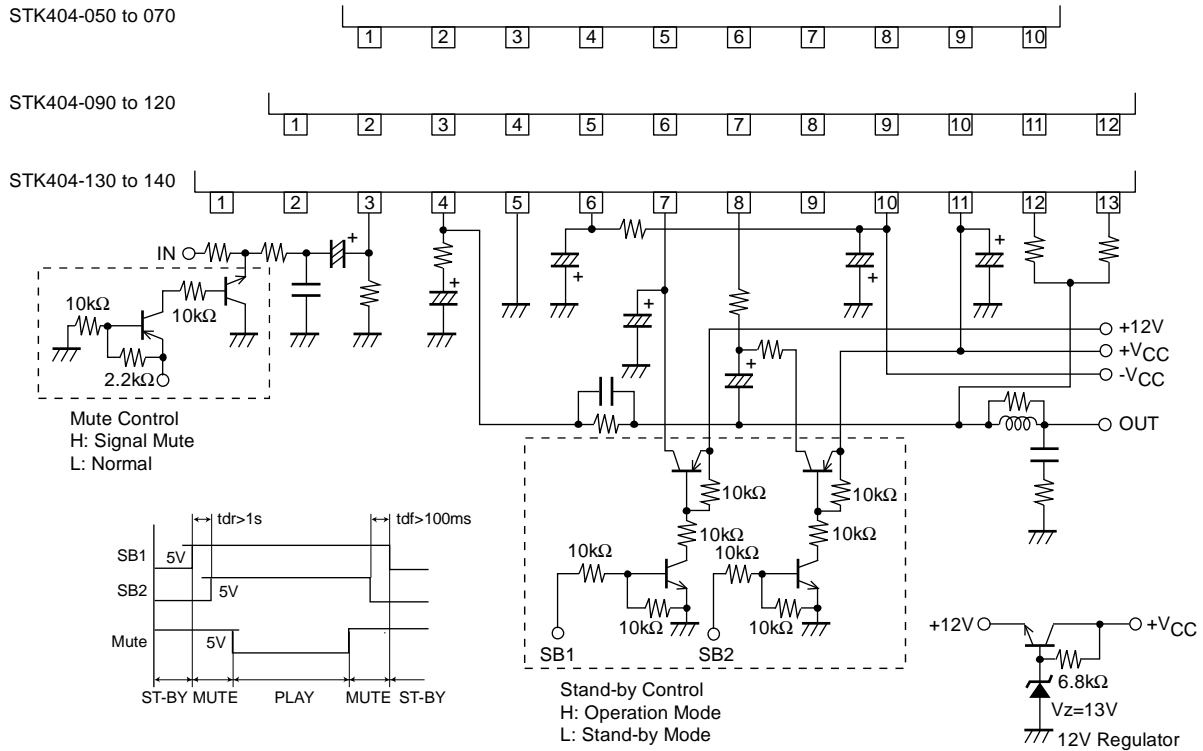
$$\begin{aligned} \text{From formula (2)'} \quad \theta_{c-a} &< (150 - 50)/28 - 1.7/2 \\ &< 2.72 \end{aligned}$$

Therefore, the value of 2.67°C/W , which satisfies both of these formulae, is the required thermal resistance of the heat sink.

Note that this thermal design example assumes the use of a constant-voltage power supply, and is therefore not a verified design for any particular user's end product.

STK404-100SC-E

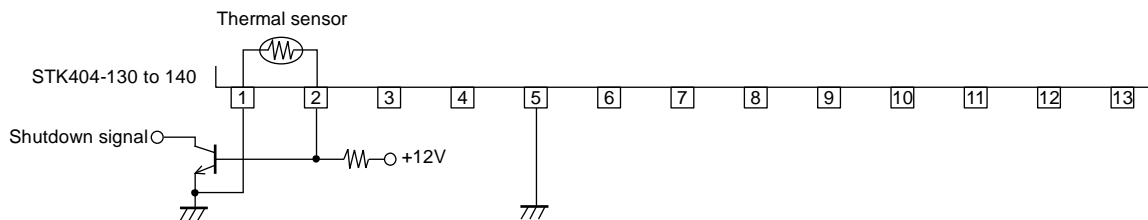
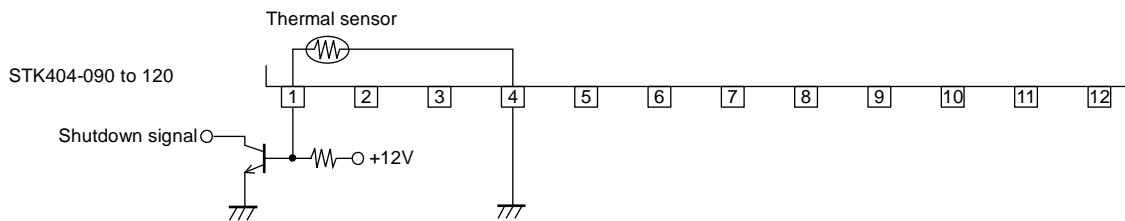
STK404-000s Stand-by Control & Mute Control Application



ITF02748

STK404-000s Thermal Shut Down Application

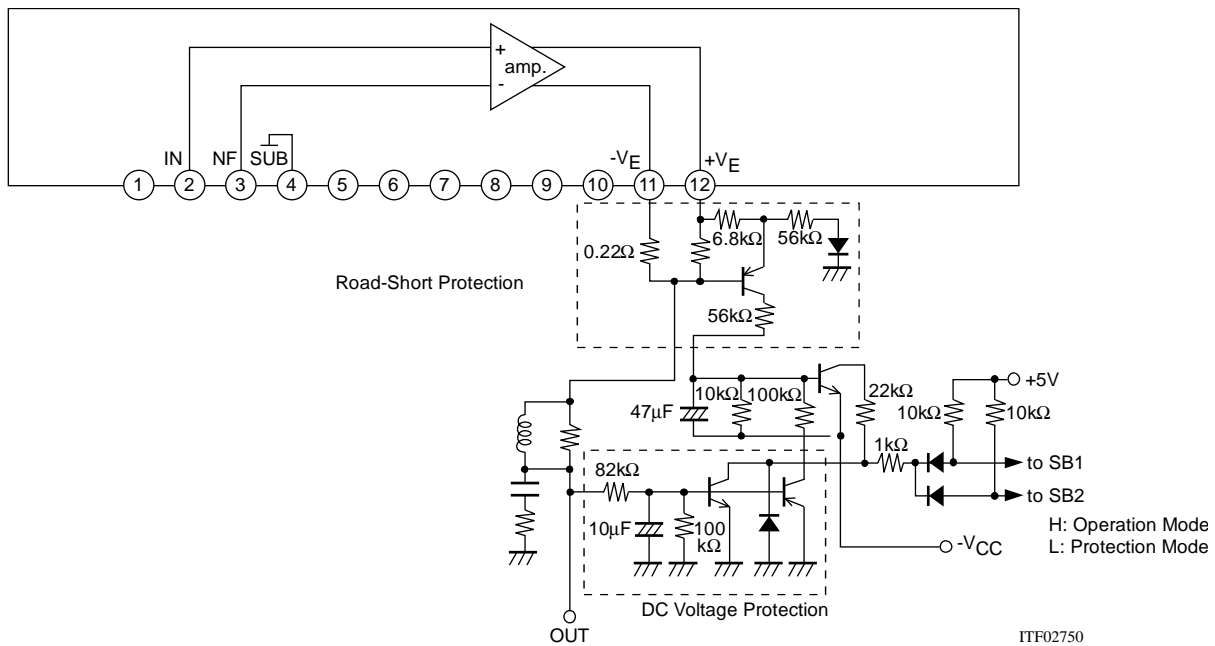
STK404-050 to 070 No thermal sensor



ITF02749

STK404-100SC-E

STK404-090, 100, 120 Road-Short & DC Voltage Protect Application



- SANYO Semiconductor Co.,Ltd. assumes no responsibility for equipment failures that result from using products at values that exceed, even momentarily, rated values (such as maximum ratings, operating condition ranges, or other parameters) listed in products specifications of any and all SANYO Semiconductor Co.,Ltd. products described or contained herein.
- SANYO Semiconductor Co.,Ltd. strives to supply high-quality high-reliability products, however, any and all semiconductor products fail or malfunction with some probability. It is possible that these probabilistic failures or malfunction could give rise to accidents or events that could endanger human lives, trouble that could give rise to smoke or fire, or accidents that could cause damage to other property. When designing equipment, adopt safety measures so that these kinds of accidents or events cannot occur. Such measures include but are not limited to protective circuits and error prevention circuits for safe design, redundant design, and structural design.
- In the event that any or all SANYO Semiconductor Co.,Ltd. products described or contained herein are controlled under any of applicable local export control laws and regulations, such products may require the export license from the authorities concerned in accordance with the above law.
- No part of this publication may be reproduced or transmitted in any form or by any means, electronic or mechanical, including photocopying and recording, or any information storage or retrieval system, or otherwise, without the prior written consent of SANYO Semiconductor Co.,Ltd.
- Any and all information described or contained herein are subject to change without notice due to product/technology improvement, etc. When designing equipment, refer to the "Delivery Specification" for the SANYO Semiconductor Co.,Ltd. product that you intend to use.
- Information (including circuit diagrams and circuit parameters) herein is for example only; it is not guaranteed for volume production.
- Upon using the technical information or products described herein, neither warranty nor license shall be granted with regard to intellectual property rights or any other rights of SANYO Semiconductor Co.,Ltd. or any third party. SANYO Semiconductor Co.,Ltd. shall not be liable for any claim or suits with regard to a third party's intellectual property rights which has resulted from the use of the technical information and products mentioned above.

This catalog provides information as of March, 2010. Specifications and information herein are subject to change without notice.