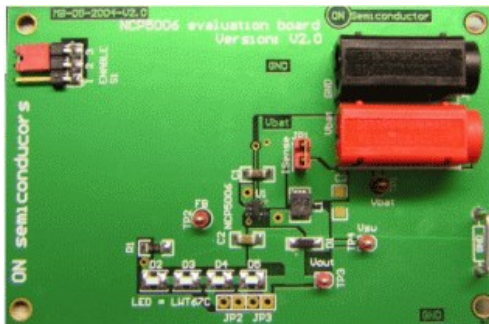




## NCP5006EVB: White LED Driver Evaluation Board

The NCP5006 is a high efficiency boost converter operating in current loop, based on a PFM mode, to drive White LEDs. The current mode regulation allows a uniform brightness of the LEDs. The chip has been optimized for small ceramic capacitors, capable of supplying 1.0 W output power.



### Features and Applications

#### Features

- 2.7 to 5.5 V Input Voltage Range
- Vout to 24 V Output Compliance Allows up to 5 LEDs Drive in Series
- Built-in Overvoltage Protection
- Inductor Based Current Brings up to 90% Efficiency
- Constant Output Current Regulation
- 0.3 uA Standby Quiescent Current
- Includes Dimming Function (PWM)
- Enable Function Driven Directly from Low Battery Voltage Source
- Automatic LEDs Current Matching
- Thermal Shutdown Protection
- All Pins are Fully ESD Protected
- Low EMI Radiation
- Pb-free Package is available

### Evaluation/Development Tool Information

Product	Status	Compliance	Short Description	Parts Used	Action
NCP5006EVB	Active		White LED Driver Evaluation Board	NCP5006SNT1G	<a href="#">Contact Local Sales Office</a> <a href="#">Inventory</a>

### Technical Documents

Type	Document Title	Document ID/Size	Rev
Eval Board: BOM	NCP5006EVB BILL OF MATERIALS	NCP5006EVB_BOM - 67.0 KB	0
Eval Board: Gerber	NCP5006EVB GERBER LAYOUT FILES (ZIP FORMAT)	NCP5006EVB_GERBER.ZIP - 35.0 KB	2
Eval Board: Schematic	NCP5006EVB SCHEMATIC	NCP5006EVB_SCHEMATIC.PDF - 21.0 KB	0
Eval Board: Test Procedure	NCP5006EVB TEST PROCEDURE	NCP5006EVB_TEST_PROCEDURE.PDF - 67.0 KB	0
Video	White LED Driver Evaluation Board - NCP5006EVB	WVD17605/D	

### Previously Viewed Products

Select Product...

### Design Support

- Technical Documentation
- Design Resources & Documents
- Technical Support
- Sales Support

### Featured Video

#### White LED Driver Evaluation Board - NCP5006EVB

▶
⏸
◀

[More Videos ...](#)

