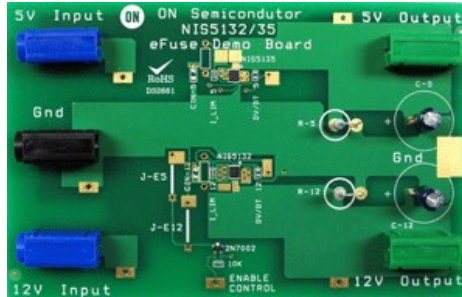




## NIS5132-35GEVB: Monolithic IC Electronic Fuses Evaluation Board

The NIS5132 and NIS5135 electronic fuses are monolithic, integrated circuits that offer superior protection for overcurrent and overvoltage. The NIS5132 is designed for 12 volt systems while the NIS5135 is designed for 5 volt systems. These two chips can be easily interfaced for systems that include both a 5 and a 12 volt bus. By tying the enable pins together both units will shutdown if either unit encounters a fault condition.

This evaluation board can be used to examine the behavior of either unit individually or both units together. A set of jumpers is provided to allow the enable pins to be connected or disconnected from each other.



### Evaluation/Development Tool Information

Product	Status	Compliance	Short Description	Parts Used	Action
NIS5132-35GEVB	Active	Pb-free	Monolithic IC Electronic Fuses Evaluation Board	NIS5132MN1TXG , NIS5135MN1TXG	<a href="#">Contact Local Sales Office</a> <a href="#">Inventory</a>

### Technical Documents

Type	Document Title	Document ID/Size	Rev
Eval Board: BOM	NIS5132-35GEVB Bill of Materials ROHS Compliant	NIS5132-35GEVB_BOM_ROHS.PDF - 135.0 KB	0
Eval Board: Gerber	NIS5132-35GEVB Gerber Layout Files (Zip Format)	NIS5132-35GEVB_GERBER.ZIP - 133.0 KB	0
Eval Board: Schematic	NIS5132-35GEVB Schematic	NIS5132-35GEVB_SCHEMATIC.PDF - 188.0 KB	0
Eval Board: Test Procedure	NIS5132-35GEVB Test Procedure	NIS5132-35GEVB_TEST_PROCEDURE.PDF - 118.0 KB	0
Video	Monolithic IC Electronic Fuses Evaluation Board - NIS5132-35GEVB Test Procedure	WVD17519/D	

### Previously Viewed Products

Select Product...  [Clear List](#)

### Design Support

- [Technical Documentation](#)
- [Design Resources & Documents](#)
- [Technical Support](#)
- [Sales Support](#)

### Featured Video

#### Monolithic IC Electronic Fuses Evaluation Board - NIS5132-35GEVB Test Procedure



[More Videos ...](#)

