

OM13085: LPCXpresso board for LPC1769 with CMSIS DAP probe



OVERVIEW

SOFTWARE & TOOLS

BUY/PARAMETRICS

TRAINING & SUPPORT

Jump To

[Overview & Features](#)[Supported Devices](#)

Overview

Pioneered by NXP® and Embedded Artists, the LPCXpresso™ development platform includes low-cost LPCXpresso target boards to get you up and running quickly. Designed for simple, rapid prototyping and evaluation, LPCXpresso™ development boards work with the LPCXpresso IDE and other industry leading partner toolchains. LPCXpresso™ is an end-to-end solution enabling embedded engineers to develop their applications from initial evaluation to final production.

This LPCXpresso™ board is populated with the LPC1769 to demonstrate and enable evaluate of the features of the LPC1700 product series. The board includes an on-board, CMSIS-DAP compatible debug probe as well as a connector for use with 3rd party debug probes.

Note: When using the OM13085 board with the LPCXpresso IDE, version 7.9.0 that tool is required.

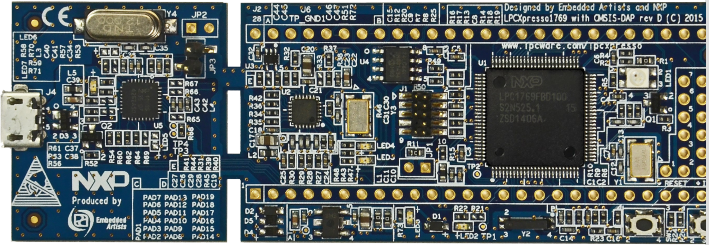
[More](#)

Features

- LPC1769 Cortex-M3 based microcontroller
- Integrated CMSIS-DAP debug probe
- Debug probe section of the board can be snapped off to reduce board size
- 10 pin SWD connector for use with an external debug probe
- Ethernet 10/100 PHY
- Reset and ISP boot mode buttons
- Tricolor LED
- LPCXpresso/mbed debug expansion connectors

[Buy](#)


LPCXpresso board for LPC1769 with CMSIS DAP probe



Supported Devices

- [LPC1769FBD100](#): 512kB flash, 64kB SRAM, Ethernet, USB, LQFP100 package


What's New



Blog

Connect with Us

MCUXpresso Software and Tools Community

[Read More](#) 

ABOUT NXP

[Investors](#)
[Press, News, Blogs](#)
[Careers](#)

RESOURCES

[Mobile Apps](#)
[Contact Us](#)

FOLLOW US



News 9 Jan 2018



[NXP Expands Smart Kitchen Appliance Leadership with World's First Automated Frozen Food Defrosting Reference Design](#)

[Read More](#)