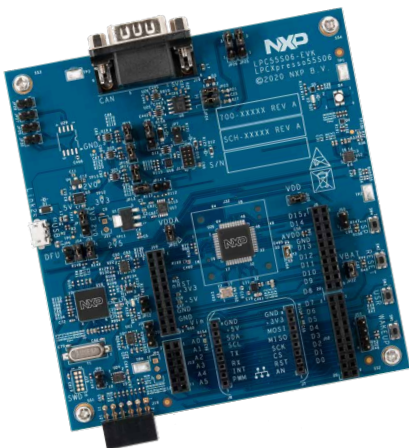




LPC55S06-EVK



Evaluation Kit for the LPC55S0x MCU Family

96 MHz Arm® Cortex®-M33 core with integrated digital signal processing (DSP) instructions, 96 kB SRAM, 256 kB on-chip flash memory with flash accelerator, high-speed SPI, CAN FD

GET TO KNOW THE LPC55S06-EVK BOARD

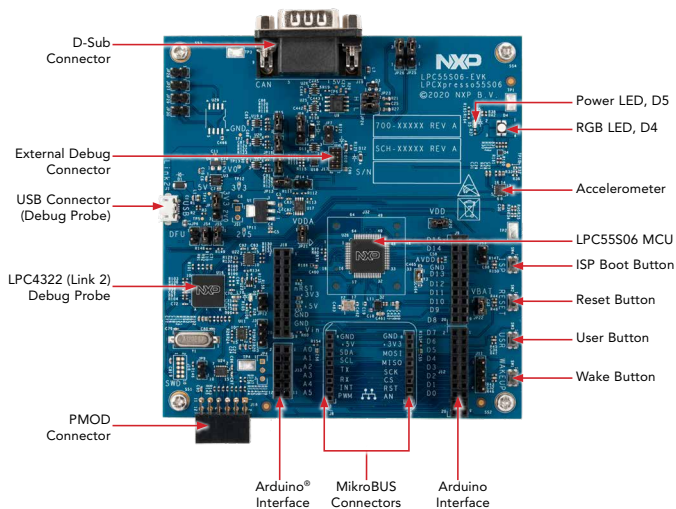
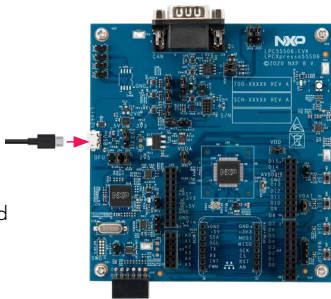


Figure 1: LPC55S06-EVK callouts

HOW TO GET STARTED

1. Connect the LPC55S06-EVK board to a PC using a micro USB cable to link USB J1. The power LED, D5, will illuminate.
2. The LPC55S06-EVK board comes pre-programmed with a demo. LED D4 will blink on/off to verify the demo is running. The demo exercises the Cortex-M33 core. More information on running the demo can be found on the "Getting Started" page.
3. Explore more out-of-the-box demos and download software and tools at www.nxp.com/LPC55S06-EVK/startnow.





GET STARTED

Download installation software
and documentation at

www.nxp.com/LPC55S06-EVK.

SUPPORT

Visit www.nxp.com/support for a list of phone numbers within your region.

WARRANTY

Visit www.nxp.com/warranty for complete warranty information.

www.nxp.com/LPC55S06-EVK

NXP and the NXP logo are trademarks of NXP B.V. All other product or service names are the property of their respective owners. Arm and Cortex are trademarks or registered trademarks of Arm Limited (or its subsidiaries) in the US and/or elsewhere. The related technology may be protected by any or all of patents, copyrights, designs and trade secrets. All rights reserved. © 2020 NXP B.V.

Document Number: LPC55S06EVKQSG REV 0

Agile Number: 926-79009 Rev A