



VISHAY INTERTECHNOLOGY, INC.

DATA BOOK



POWER ELECTRONIC CAPACITORS

VISHAY ESTA

DC-Capacitors

SEMICONDUCTORS

RECTIFIERS

Schottky (single, dual)
 Standard, Fast, and Ultra-Fast Recovery
 (single, dual)
 Bridge
 Superrectifier®
 Sinterglass Avalanche Diodes

HIGH-POWER DIODES AND THYRISTORS

High-Power Fast-Recovery Diodes
 Phase-Control Thyristors
 Fast Thyristors

SMALL-SIGNAL DIODES

Schottky and Switching (single, dual)
 Tuner/Capacitance (single, dual)
 Bandswitching
 PIN

ZENER AND SUPPRESSOR DIODES

Zener (single, dual)
 TVS (TRANSZORB®, Automotive, ESD, Arrays)

FETs

Low-Voltage TrenchFET® Power MOSFETs
 High-Voltage TrenchFET® Power MOSFETs
 High-Voltage Planar MOSFETs
 JFETs

RF TRANSISTORS

Bipolar Transistors (AF and RF)
 Dual Gate MOSFETs
 MOSMICs®

OPTOELECTRONICS

IR Emitters and Detectors,
 and IR Receiver Modules
 Optocouplers and Solid-State Relays
 Optical Sensors
 LEDs and 7-Segment Displays
 Infrared Data Transceiver Modules
 Custom Products

ICs

Power ICs
 Analog Switches
 RF Transceivers and Receiver Modules
 ICs for Optoelectronics

MODULES AND ASSEMBLIES

Automotive Modules and Assemblies
 Power Modules (contain power diodes,
 thyristors, MOSFETs, IGBTs)
 DC/DC Converters

PASSIVE COMPONENTS

RESISTIVE PRODUCTS

Foil Resistors
 Film Resistors
 Metal Film Resistors
 Thin Film Resistors
 Thick Film Resistors
 Metal Oxide Film Resistors
 Carbon Film Resistors
 Wirewound Resistors
 Power Metal Strip® Resistors
 Chip Fuses
 Variable Resistors
 Cermet Variable Resistors
 Wirewound Variable Resistors
 Conductive Plastic Variable Resistors
 Networks/Arrays
 Non-Linear Resistors
 NTC Thermistors
 PTC Thermistors
 Varistors

MAGNETICS

Inductors
 Transformers

CAPACITORS

Tantalum Capacitors
 Molded Chip Tantalum Capacitors
 Coated Chip Tantalum Capacitors
 Solid Through-Hole Tantalum Capacitors
 Wet Tantalum Capacitors
 Ceramic Capacitors
 Multilayer Chip Capacitors
 Disc Capacitors
 Film Capacitors
 Power Capacitors
 Heavy-Current Capacitors
 Aluminum Capacitors
 Silicon RF Capacitors

STRAIN GAGE TRANSDUCERS AND STRESS ANALYSIS SYSTEMS

PhotoStress®
 Strain Gages
 Load Cells
 Force Transducers
 Instruments
 Weighing Systems
 Specialized Strain Gage Systems

Power Electronic Capacitors

Vishay ESTA

Vishay Electronic GmbH
Division ESTA
Hofmark-Aich-Strasse 36
D-84030 Landshut
Germany
Phone: +49 871 86-0
Fax: +49 871 862519
www.vishay.com

NOTICE

Specifications of the products displayed herein are subject to change without notice. Vishay Intertechnology, Inc., or anyone on its behalf, assumes no responsibility or liability for any errors or inaccuracies.

Information contained herein is intended to provide a product description only. No license, express or implied, by estoppel or otherwise, to any intellectual property rights is granted by this document. Except as provided in Vishay's terms and conditions of sale for such products, Vishay assumes no liability whatsoever, and disclaims any express or implied warranty, relating to sale and/or use of Vishay products including liability or warranties relating to fitness for a particular purpose, merchantability, or infringement of any patent, copyright, or other intellectual property right.

The products shown herein are not designed for use in medical, life-saving, or life-sustaining applications. Customers using or selling these products for use in such applications do so at their own risk and agree to fully indemnify Vishay for any damages resulting from such improper use or sale.



Power Electronic Capacitors

GENERAL TECHNICAL INFORMATION

Basic Information	2
Technology, Design and Definitions.....	3
Technical Data	4

CAPACITOR TYPE DESCRIPTION.....	5
--	----------

DIMENSIONAL DRAWINGS	8
-----------------------------------	----------

REQUEST FOR QUOTATION	9
------------------------------------	----------

Power Electronic Capacitors

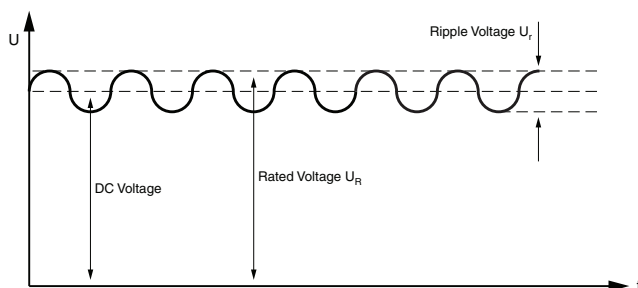
BASIC INFORMATION

Power electronic capacitors (PEC) are specially designed for DC-voltage and for non-sinusoidal waveforms of voltages and currents.

QUICK REFERENCE DATA	
DESCRIPTION	VALUE
Nominal case size (D x L in mm)	30 x 52 to 84 x 190
Rated capacitance range	0.1 μ F to 470 μ F
Tolerance	$\pm 10\%$
Rated voltage range U_N	400 V to 2400 V
Temperature range case	- 25 °C to + 70 °C
Storage temperature	- 40 °C to + 85 °C
Specification	IEC 61071-1
Useful life	100 000 h
Loss factor at 50 Hz	1.5×10^{-4}
Loss factor at 14 kHz	4.0×10^{-4}

DC APPLICATION

DC capacitors are periodically charged and discharged. This capacitor type is used to reduce the AC component of a DC voltage. Supporting or DC-filter capacitors are used for energy storage.



Definitions:

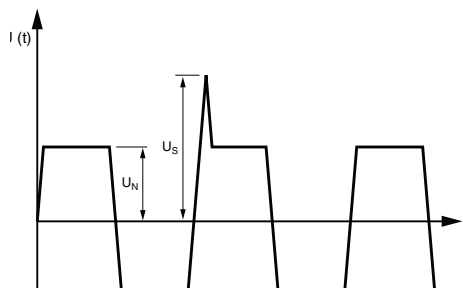
- **Rated voltage U_N**
Maximum operating peak voltage of either polarity of a reversing or non reversing voltage.
- **Ripple voltage U_r**
Peak to peak alternating component of the unidirectional voltage

FEATURES

- Very low stray inductance down to 10 nH
- Extremely low losses at high frequencies
- Low ESR < 4 m Ω
- Highest RMS current rating up to 100 kA
- High impulse discharge current capability
- Resistance to heavy-duty shock and vibration
- High reliability and life expectancy > 180 000 h/100 FIT
- Non-polar dielectric

AC APPLICATION

AC capacitors are periodically recharged during operation. AC capacitors serve as damping or snubber capacitors for suppression of undesirable voltage spikes. Communication capacitors quench the conductive state of thyristors.



Definitions:

- **Rated voltage U_N**
Maximum operating peak voltage of either polarity of a reversing or non reversing voltage.
- **Non recurrent surge voltage U_s**
Peak voltage induced by a switching or any other disturbance of the system which is allowed for a limited number of times and for durations shorter than the basic period.

TECHNOLOGY AND DESIGN

MKP-Dielectric

The favourite dielectric material for PEC is Polypropylene. It is a special high temperature Polypropylene film with a thin metallization on one side of the film. The metallization has a optimized structure in mixture of Aluminium/Zinc and in the ohmic profile which depends on the application and capacitor demands.

Selfhealing effect

As a result of the selfhealing effect, the capacitor is full operative after an electrical breakdown. A breakdown generates a small electric arc which evaporates the metallization around the area of breakdown in only a few microseconds and at very low energy. The localized increase in gas pressure caused by the high temperature of the arc, blows off the gaseous metallization away from the breakdown point. By means of this process, a metall free, non-conductive isolation crescent is formed which enables continuous full operation of the capacitor.

Winding element

All selfhealing capacitors comprising of one or more individual cylindrical winding elements. For contacting the elements in parallel or in series a solderable lead-free metal base layer is sprayed onto the front sides of the winding elements. The process of metal spraying is called "schooping". The connection of the windings in parallel or in series is accomplished by means of highly flexible copper material. In this way the capacitors are able to fulfill the most highest demands of current load, low inductive characteristics, low ohmic drop and shock and vibration fail proof.

Filling material

After mounting the stack of winding elements into the cases, the capacitors are dried under vacuum and gas impregnated with N₂ (Nitrogen) before filling.

- Dry casting

Most of the selfhealing capacitors in rectangular cases and a number of capacitors in cylindrical cans are filled with a soft resin mainly based on vegetable castor oil. The casting compound R 25 developed by Vishay remains elastic throughout the entire life of the capacitor.

This elastic casting compound offers outstanding shock and vibration protection for the internal structure and long-lasting protection against the penetration of moisture into the electrical components of the capacitor.

A very good thermal conductivity of the casting compound enables maximum capacitor loads under high temperature stress conditions.

The casting compound can be treated as ordinary waste.

- Vegetable oil

For capacitors with tear-off protection, preference is given to impregnation using a specially produced and stabilized vegetable oil.

STANDARDS

The capacitors listed in this catalog are subject to the international standards for "capacitors for power electronics":

- IEC 61071-1; EN 61071-1
- IEC 61881; EN 61881

DEFINITIONS

Rated capacitance (C_N)

of a capacitor is the capacitance by which it is designated. The term is related to 20 °C capacitor temperature, 50 Hz and rated voltage.

Tolerance on capacitance

is the capacitance range within which the actual capacitance may differ from rated capacitance (C_N).

Rated voltage (U_N)

is the maximum of mixed voltages or the peak of AC voltages for which the dielectric of capacitors is designed, adhering to the characteristics and other rated values specified. Rated voltage is not the rms value but the maximum or peak capacitor voltage.

Rated voltage (U_N) DC-capacitors

is the maximum operating peak voltage of either polarity but of a non-reversing type waveform, for which the capacitors have been designed, for continuous operation.

Periodic peak voltage (U_S)

is the periodically permissible peak voltage. The characteristic and permissible duration of exposure are given.

Peak voltage ($U_{smax.}$)

is the maximum voltage which may be allowed to occur across the capacitor sporadically and for a brief period, e.g. in the event of a fault. The characteristic and permissible load duration are given in most cases.

Ratio of voltage reversal (D)

is the ratio between the second voltage peak and the first voltage peak for dampened dying-out surge discharge, expressed as a percentage.

Rated insulation voltage (U_i)

is the rms AC voltage for which the insulation of the capacitor is designed and designed with terminal connected to case.

Rated current (I_N)

is the current by which the capacitor is designated and in particular for which its current paths are designed. Rated current is the maximum rms level of steady-state current.

Peak surge current (I_s)

is the maximum level of current which may be allowed to occur across the capacitor sporadically for a short period e.g. in the event of a fault. The characteristic and permissible duration are given.

Dielectric loss factor ($\tan \delta_0$)

is the loss factor of the dielectric which is assumed to be constant for the normal dielectrics and their operating frequency range.

Minimum temperature

The lowest temperature at the surface of the capacitor case (ready for operation) at which the capacitor may be switched on. Lower temperatures are usually permissible for transport and storage.

Maximum temperature

The highest temperature which the hottest point of the capacitor case may reach during operation, including selfheating.

Reliability

The operating reliability of the capacitor is determined by the number of failures within an adequately large batch expected to occur after a specified time (life expectancy). DIN 40040 has replaced the previous term "operating reliability" by the new term "reference reliability".

Reference reliability

Reference reliability is expressed in terms of failure quota and respective load duration (not including storage times). Reference reliability is the reliability for defined load (reference load). The reference exposure figure quoted relates to operation under nominal conditions and the application class given in the data lists.

Failure ratio

The failure ratio is the relationship between the number of failed capacitors and the total number of capacitors used. It applies to a particular capacitor only and the load duration cited (life expectancy). The figure quoted in the data lists is an average which is generally not exceeded if examining an adequately large number of capacitors.

FIT

FIT = failures in time

The failure rate in FIT indicates the maximum failed components within 1×10^9 component operation hours.

TECHNICAL DATA

Operating Mode

continuous operation

Impregnation

vegetable oil

Operating Temperature Range

min./max. casing temperature: - 25/+ 70 °C
min./max. storage temperature:- 40/+ 75 °C
hot spot temperature: $\leq + 85$ °C

Self-Discharge Time Constant

> 10 000 s

Life Expectancy with 3 % Failure Rate

100 000 h; hot spot maximum + 70 °C

Mounting Position

vertical/horizontal
upside down position: upon request only

Protection

overpressure tear-off fuse

Loss Factor

$\tan \delta < 10 \times 10^{-4}$

Capacitance Tolerance

± 10 %

Test Voltages

terminal/terminal
AC test voltage r.m.s. $1.5 U_N/10$ s
DC test voltage $1.5 U_{NDC}/10$ s

terminal/casing
 $2 \times U_i + 1000$ V or 2000 V, whichever is the highest value

Power Electronic Capacitors ESTAprop

EMKP 400 ($U_N = 400\text{ V}$, $U_{rms} = 280\text{ V}$, $U_{DC} = 750\text{ V}$, $U_S = 1125\text{ V}$)												
TYPE	C_N [μF]	$I_{MAX.}$ [A]	dU/dt [V/ μs]	R_S [m Ω]	$R_{\theta th}$ [K/W]	I [kA]	I_S [kA]	DIA. [mm]	HEIGHT H [mm]	WEIGHT [kg]	FIGURE	PACKING UNIT
EMKP 400-15 IA	15	15	60	2.6	24.9	0.20	0.6	40	52	0.08	A	50
EMKP 400-22 IA	22	16	50	3.0	19.4	0.22	0.7	40	72	0.1	A	50
EMKP 400-33 IA	33	19	50	2.3	18.5	0.33	1.0	50	72	0.2	A	25
EMKP 400-47 IB	47	27	50	1.6	12.8	0.47	1.4	64	72	0.3	D	9
EMKP 400-68 IB	68	26	40	1.9	11.5	0.49	1.5	64	72	0.3	D	9
EMKP 400-100 IB	100	24	20	2.8	9.5	0.46	1.4	64	109	0.4	D	9
EMKP 400-150 IB	150	44	40	1.2	6.4	1.09	3.3	84	72	0.5	D	4
EMKP 400-220 IB	220	39	20	1.7	5.8	1.02	3.1	84	109	0.8	D	4
EMKP 400-330 IB	330	82	40	0.7	3.1	2.33	7.0	84	140	1.0	D	4
EMKP 400-470 IB	470	74	20	0.9	2.9	2.17	6.5	84	190	1.3	D	4

EMKP 650 ($U_N = 650\text{ V}$, $U_{rms} = 460\text{ V}$, $U_{DC} = 1200\text{ V}$, $U_S = 1800\text{ V}$)												
TYPE	C_N [μF]	$I_{MAX.}$ [A]	dU/dt [V/ μs]	R_S [m Ω]	$R_{\theta th}$ [K/W]	I [kA]	I_S [kA]	DIA. [mm]	HEIGHT H [mm]	WEIGHT [kg]	FIGURE	PACKING UNIT
EMKP 650-4,7 IA	4.7	11	90	4.1	27.9	0.10	0.3	35	52	0.06	A	50
EMKP 650-6,8 IA	6.8	14	90	3.1	24.4	0.15	0.5	40	52	0.08	A	50
EMKP 650-10 IA	10	16	90	2.4	23.1	0.22	0.7	50	52	0.1	A	25
EMKP 650-15 IA	15	14	50	4.4	18.4	0.17	0.5	50	72	0.2	A	25
EMKP 650-22 IB	22	25	70	1.9	12.6	0.35	1.1	64	72	0.3	D	9
EMKP 650-33 IB	33	25	50	2.2	10.9	0.38	1.1	64	72	0.3	D	9
EMKP 650-47 IB	47	22	30	3.4	9.2	0.35	1.1	64	109	0.4	D	9
EMKP 650-68 IB	68	48	50	1.2	5.6	0.79	2.4	64	140	0.6	D	9
EMKP 650-100 IB	100	58	50	0.9	4.7	1.16	3.5	84	140	1.0	D	4
EMKP 650-150 IB	150	53	30	1.3	4.0	1.11	3.3	84	190	1.3	D	4

EMKP 950 ($U_N = 950\text{ V}$, $U_{rms} = 670\text{ V}$, $U_{DC} = 1800\text{ V}$, $U_S = 2700\text{ V}$)												
TYPE	C_N [μF]	$I_{MAX.}$ [A]	dU/dt [V/ μs]	R_S [m Ω]	$R_{\theta th}$ [K/W]	I [kA]	I_S [kA]	DIA. [mm]	HEIGHT H [mm]	WEIGHT [kg]	FIGURE	PACKING UNIT
EMKP 950-0,10 IA	0.10	7	1800	7.8	37.0	0.04	0.1	30	52	0.05	A	100
EMKP 950-0,22 IA	0.22	9	1260	5.5	34.2	0.06	0.2	30	52	0.05	A	100
EMKP 950-0,33 IA	0.33	7	1270	8.0	39.2	0.04	0.1	30	52	0.05	A	100
EMKP 950-0,47 IA	0.47	6	360	10.3	45.8	0.04	0.1	30	52	0.05	A	100
EMKP 950-0,68 IA	0.68	7	360	7.5	39.6	0.06	0.2	30	52	0.05	A	100
EMKP 950-1,0 IA	1.0	9	360	5.5	32.8	0.08	0.2	30	52	0.05	A	100
EMKP 950-1,5 IA	1.5	11	360	4.0	31.3	0.13	0.4	40	52	0.08	A	50
EMKP 950-2,2 IA	2.2	14	360	3.1	24.9	0.19	0.6	40	52	0.1	A	50
EMKP 950-3,3 IA	3.3	17	360	2.4	23.2	0.28	0.8	50	52	0.1	B	25
EMKP 950-4,7 IA	4.7	16	250	3.1	19.5	0.27	0.8	50	72	0.2	B	25
EMKP 950-6,8 IA	6.8	18	170	3.0	16.2	0.27	0.8	50	72	0.2	B	25
EMKP 950-10 IB	10	25	170	2.0	11.9	0.40	1.2	64	72	0.3	D	9
EMKP 950-15 IB	15	22	100	3.1	10.2	0.36	1.1	64	109	0.4	D	9
EMKP 950-22 IB	22	29	100	2.4	7.5	0.53	1.6	64	109	0.4	D	9
EMKP 950-33 IB	33	36	100	1.9	6.4	0.80	2.4	84	109	0.8	D	4
EMKP 950-47 IB	47	80	170	0.7	3.3	1.88	5.6	84	140	1.0	D	4
EMKP 950-68 IB	68	67	100	1.0	3.3	1.64	4.9	84	190	1.3	D	4

EMKP 1200 ($U_N = 1200\text{ V}$, $U_{rms} = 850\text{ V}$, $U_{DC} = 2250\text{ V}$, $U_S = 3375\text{ V}$)												
TYPE	C_N [μF]	$I_{MAX.}$ [A]	dU/dt [V/ μs]	R_S [m Ω]	$R_{\theta th}$ [K/W]	I [kA]	I_S [kA]	DIA. [mm]	HEIGHT H [mm]	WEIGHT [kg]	FIGURE	PACKING UNIT
EMKP 1200-0,68 SA	0.68	13	900	3.1	30.1	0.14	0.4	40	52	0.08	C	50
EMKP 1200-1,0 SA	1.0	16	900	2.4	24.0	0.21	0.6	40	52	0.08	C	50
EMKP 1200-1,5 SA	1.5	14	600	3.4	21.0	0.20	0.6	40	72	0.1	C	50
EMKP 1200-2,2 IA	2.2	17	600	2.7	20.1	0.29	0.9	50	72	0.2	B	25
EMKP 1200-3,3 IA	3.3	15	400	3.7	17.9	0.28	0.8	50	72	0.2	B	25
EMKP 1200-4,7 IB	4.7	34	600	1.2	11.3	0.62	1.9	50	127	0.3	D	25
EMKP 1200-6,8 IB	6.8	46	600	1.0	7.3	0.90	2.7	64	127	0.5	D	9
EMKP 1200-10 IB	10	62	600	0.8	5.1	1.32	4.0	64	127	0.5	D	9
EMKP 1200-15 IB	15	53	400	1.0	5.2	1.28	3.8	64	140	0.6	D	9
EMKP 1200-22 IB	22	65	400	0.8	4.3	1.87	5.6	84	140	1.0	D	4
EMKP 1200-33 IB	33	50	200	1.3	4.6	1.61	4.8	84	140	1.0	D	4
EMKP 1200-47 IB	47	67	200	1.1	3.1	2.29	6.9	84	190	1.3	D	4

EMKP 1450 ($U_N = 1450\text{ V}$, $U_{rms} = 1030\text{ V}$, $U_{DC} = 2700\text{ V}$, $U_S = 4050\text{ V}$)												
TYPE	C_N [μF]	$I_{MAX.}$ [A]	dU/dt [V/ μs]	R_S [m Ω]	$R_{\theta th}$ [K/W]	I [kA]	I_S [kA]	DIA. [mm]	HEIGHT H [mm]	WEIGHT [kg]	FIGURE	PACKING UNIT
EMKP 1450-0,68 SA	0.68	15	1100	2.7	25.0	0.17	0.5	40	52	0.08	C	50
EMKP 1450-1,0 IA	1.0	17	1100	2.2	23.7	0.25	0.8	50	52	0.1	B	25
EMKP 1450-1,5 IA	1.5	15	700	3.0	20.8	0.24	0.7	50	72	0.2	B	25
EMKP 1450-2,2 IA	2.2	18	700	3.0	15.0	0.24	0.7	64	72	0.3	B	25
EMKP 1450-3,3 IB	3.3	30	700	1.6	10.5	0.52	1.6	64	72	0.3	D	9
EMKP 1450-4,7 IB	4.7	24	400	2.3	11.4	0.48	1.4	64	72	0.3	D	9
EMKP 1450-6,8 IB	6.8	55	700	0.9	5.9	1.08	3.2	64	109	0.4	D	9
EMKP 1450-10 IB	10	68	700	0.7	4.6	1.59	4.8	84	127	0.9	D	4
EMKP 1450-15 IB	15	59	400	0.9	4.6	1.53	4.6	84	140	1.0	D	4
EMKP 1450-22 IB	22	47	200	1.5	4.6	1.29	3.9	84	190	1.3	D	4
EMKP 1450-33 IB	33	63	200	1.2	3.2	1.93	5.8	84	190	1.3	D	4

EMKP 1650 ($U_N = 1650\text{ V}$, $U_{rms} = 1170\text{ V}$, $U_{DC} = 3150\text{ V}$, $U_S = 4725\text{ V}$)												
TYPE	C_N [μF]	$I_{MAX.}$ [A]	dU/dt [V/ μs]	R_S [m Ω]	$R_{\theta th}$ [K/W]	I [kA]	I_S [kA]	DIA. [mm]	HEIGHT H [mm]	WEIGHT [kg]	FIGURE	PACKING UNIT
EMKP 1650-0,22 IA	0.22	9	1300	5.5	34.2	0.06	0.2	30	52	0.05	C	100
EMKP 1650-0,33 IA	0.33	11	1300	4.0	30.0	0.10	0.3	35	52	0.1	C	100
EMKP 1650-0,47 IA	0.47	13	1300	3.1	26.6	0.14	0.4	40	52	0.1	C	50
EMKP 1650-0,68 IA	0.68	15	1300	2.5	25.3	0.20	0.6	50	52	0.1	B	50
EMKP 1650-1,0 IA	1.0	14	800	3.6	22.3	0.19	0.6	50	72	0.2	B	50
EMKP 1650-1,5 IA	1.5	18	800	2.7	17.7	0.28	0.8	50	72	0.2	B	25
EMKP 1650-2,2 IB	2.2	45	1300	0.9	8.4	0.65	2.0	64	109	0.4	D	9
EMKP 1650-3,3 IB	3.3	38	800	1.2	8.3	0.61	1.8	64	127	0.5	D	9
EMKP 1650-4,7 IB	4.7	50	800	1.0	6.2	0.87	2.6	64	127	0.5	D	9
EMKP 1650-6,8 IB	6.8	60	800	0.8	5.3	1.26	3.8	84	127	0.9	D	4
EMKP 1650-10 IB	10	51	500	1.1	5.4	1.19	3.6	84	140	1.0	D	4
EMKP 1650-15 IB	15	41	300	1.7	5.0	1.02	3.1	84	190	1.3	D	4
EMKP 1650-22 IB	22	55	300	1.4	3.7	1.50	4.5	84	190	1.3	D	4

EMKP 2250 ($U_N = 2250 \text{ V}$, $U_{rms} = 1590 \text{ V}$, $U_{DC} = 4050 \text{ V}$, $U_S = 6075 \text{ V}$)												
TYPE	C_N [μF]	$I_{MAX.}$ [A]	dU/dt [V/ μs]	R_S [m Ω]	$R_{\theta th}$ [K/W]	I [kA]	I_S [kA]	DIA. [mm]	HEIGHT H [mm]	WEIGHT [kg]	FIGURE	PACKING UNIT
EMKP 2250-0,22 SA	0.22	11	1600	4.5	29.4	0.08	0.2	35	52	0.06	C	100
EMKP 2250-0,33 SA	0.33	13	1600	3.3	25.2	0.13	0.4	40	52	0.1	C	50
EMKP 2250-0,47 IA	0.47	15	1600	2.6	24.2	0.18	0.5	50	52	0.1	B	25
EMKP 2250-0,68 IA	0.68	13	1000	3.9	21.4	0.16	0.5	50	72	0.2	B	25
EMKP 2250-1,0 IA	1.0	31	1600	1.2	13.0	0.38	1.1	50	109	0.3	B	25
EMKP 2250-1,5 IA	1.5	28	1000	1.7	11.6	0.36	1.1	50	127	0.3	B	25
EMKP 2250-2,2 IB	2.2	36	1000	1.4	8.3	0.52	1.6	64	127	0.5	E	9
EMKP 2250-3,3 IB	3.3	32	600	1.9	7.8	0.51	1.5	64	140	0.6	E	9
EMKP 2250-4,7 IB	4.7	42	600	1.4	6.0	0.72	2.2	64	140	0.6	E	9
EMKP 2250-6,8 IB	6.8	50	600	1.1	5.2	1.04	3.1	84	140	1.0	E	4
EMKP 2250-10 IB	10	68	600	0.9	3.5	1.53	4.6	84	140	1.0	E	4
EMKP 2250-15 IB	15	53	400	1.5	3.6	1.28	3.8	84	190	1.3	E	4

EMKP 2400 ($U_N = 2400 \text{ V}$, $U_{rms} = 1700 \text{ V}$, $U_{DC} = 4500 \text{ V}$, $U_S = 6750 \text{ V}$)												
TYPE	C_N [μF]	$I_{MAX.}$ [A]	dU/dt [V/ μs]	R_S [m Ω]	$R_{\theta th}$ [K/W]	I [kA]	I_S [kA]	DIA. [mm]	HEIGHT H [mm]	WEIGHT [kg]	FIGURE	PACKING UNIT
EMKP 2400-0,22 SA	0.22	11	1800	4.1	28.8	0.09	0.3	40	52	0.08	C	100
EMKP 2400-0,33 IA	0.33	13	1800	3.1	26.7	0.14	0.4	50	52	0.1	B	25
EMKP 2400-0,47 IA	0.47	12	1100	4.7	23.7	0.12	0.4	50	72	0.2	B	25
EMKP 2400-0,68 IA	0.68	15	1100	3.6	19.1	0.18	0.5	50	72	0.2	B	25
EMKP 2400-1,0 IA	1.0	13	700	5.3	17.2	0.17	0.5	50	72	0.2	B	25
EMKP 2400-1,5 IB	1.5	50	1800	0.9	7.0	0.63	1.9	64	109	0.4	B	9
EMKP 2400-2,2 IB	2.2	41	1100	1.2	7.3	0.58	1.7	64	127	0.5	B	9
EMKP 2400-3,3 IB	3.3	51	1100	0.9	6.1	0.87	2.6	84	127	0.9	E	9
EMKP 2400-4,7 IB	4.7	42	700	1.3	6.2	0.80	2.4	84	140	1.0	E	9
EMKP 2400-6,8 IB	6.8	57	700	1.1	4.4	1.16	3.5	84	140	1.0	E	4
EMKP 2400-10 IB	10	44	400	1.8	4.3	0.97	2.9	84	190	1.3	E	4

STANDARD CAPACITORS IN CYLINDRICAL CASING, OIL IMPREGNATED, SELF-HEALING, WITH FUSE

Dimensional Drawings

Dimensional drawings of the bushing on last page of this datasheet.

Design IA

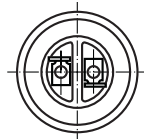
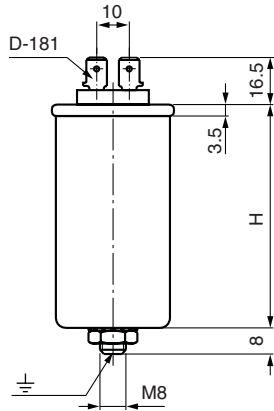


Figure A

Design IA

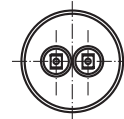
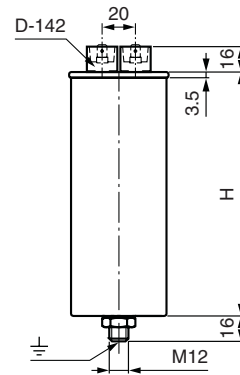


Figure B

Design SA

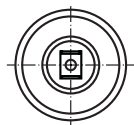
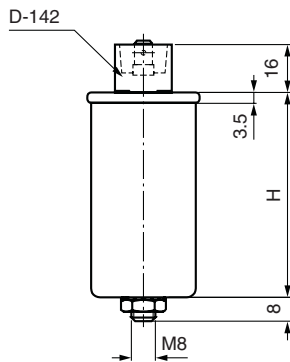


Figure C

Design IB

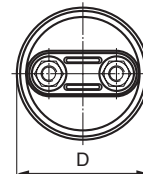
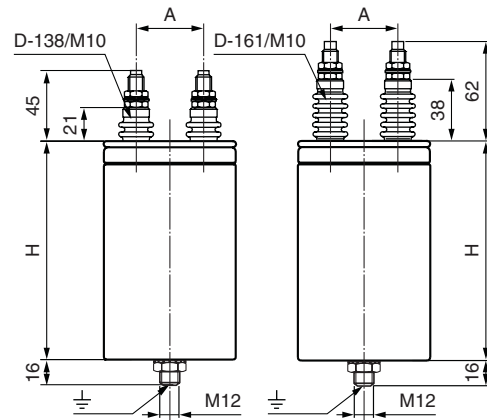


Figure D

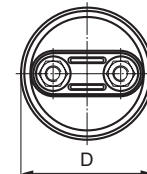


Figure E



Request for Power Electronic Capacitors

Request for Power Electronic
Capacitors

Vishay ESTA

		VALUE		REMARKS
Capacitance	C	μF
- Tolerance		%
Voltage				
- Rated AC voltage	U_N	V
- Rated DC voltage	U_{NDC}	V
- Ripple voltage	U_r	V
- Pulse frequency	f_p	Hz
- Non-recurrent surge voltage	U_S	V
- Voltage rate of rise (repetitive)	dU/dt	V/μs
Current				
- Maximum peak current	I	A
- Maximum RMS current	$I_{max.}$	A
- Maximum surge current	I_S	A
Expected Life Time		h	
Climatic Conditions				
- Operating temperature range		$\theta_{min.}$ °C	$\theta_{max.}$ °C	
- Ambient temperature/on.load-duration		Temperature 50 % to 60 %	 °C
		Temperature 60 % to 70 %	 °C
- Cooling	Forced cooling	<input type="checkbox"/>	Natural cooling	<input type="checkbox"/>
Installation	Indoor	<input type="checkbox"/>	Outdoor	<input type="checkbox"/>
Maximum Dimensions	L x W x H
Further Requirements				
- Quantity		pieces
- Request lead time		weeks
- Additional requirements			
- Application			



ONLINE INFORMATION

For product information and a current list of sales offices,
representatives and distributors, visit our website:

www.vishay.com

WORLDWIDE SALES CONTACTS

THE AMERICAS

UNITED STATES

VISHAY AMERICAS
2100 WEST FRONT STREET
STATESVILLE, NC 28677
UNITED STATES
PH: +1-704-872-8101
FAX: +1-704-872-8023

ASIA

SINGAPORE

VISHAY INTERTECHNOLOGY
ASIA PTE LTD.
25 TAMPINES STREET 92
KEPPEL BUILDING #02-00
SINGAPORE 528877
PH: +65-6788-6668
FAX: +65-6788-0988

P.R. CHINA

VISHAY TRADING (SHANGHAI) CO., LTD.
15D, SUN TONG INFOPORT PLAZA
55 HUAI HAI WEST ROAD
SHANGHAI 200030
P.R. CHINA
PH: +86-21-5258-5000
FAX: +86-21-5258-7979

JAPAN

VISHAY JAPAN CO., LTD.
MG IKENOHATA BLDG. 4F
1-2-18, IKENOHATA
TAITO-KU
TOKYO 110-0008
JAPAN
PH: +81-3-5832-6210
FAX: +81-3-5832-6260

EUROPE

GERMANY

VISHAY ELECTRONIC GMBH
DIVISION ESTA
HOFMARK-AICH-STRASSE 36
84030 LANDSHUT
GERMANY
PH: +49-871-86-0
FAX: +49-871-86-25-06

FRANCE

VISHAY S.A.
199, BLVD DE LA MADELEINE
06003 NICE, CEDEX 1
FRANCE
PH: +33-4-9337-2920
FAX: +33-4-9337-2997

UNITED KINGDOM

VISHAY LTD.
PALLION INDUSTRIAL ESTATE
SUNDERLAND SR4 6SU
UNITED KINGDOM
PH: +44-191-514-4155
FAX: +44-191-567-8262

One of the World's Largest
Manufacturers
of Discrete Semiconductors and Passive Components

**World Headquarters**

Vishay Intertechnology, Inc.
63 Lancaster Avenue
Malvern, PA 19355-2143
United States

One of the World's Largest
Manufacturers
of Discrete Semiconductors and Passive Components



Copyright © 2008 by Vishay Intertechnology, Inc.
Registered Trademarks of Vishay Intertechnology, Inc.
All rights reserved. Printed in Germany.
Specifications subject to change without notice.

www.vishay.com

VSE-DB0045-0803