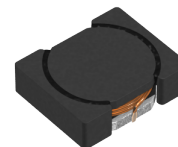


<b>Applications</b>	Commercial Grade
<b>Feature</b>	<div>Wire Wound</div> <div>Wire Wound</div> <div>Shield</div> <div>Magnetic Shield</div> <div>Ferrite Core</div> <div>Ferrite Core</div>
<b>Series   Type</b>	VLF-M
<b>Status</b>	<div> Obsolete</div> <div>Recommended Alternate Part No. : <a href="#">VLS252010HBX-150M-1</a> (Interchangeability is not guaranteed.)</div> <div>Discontinue Issue Date : May.18, 2017</div> <div>Last Purchase Order Date : Mar.31, 2021</div> <div>Last Shipment Date : Sep.30, 2021</div>
<b>Brand</b>	TDK



Size	
Length(L)	2.50mm ±0.20mm
Width(W)	2.00mm ±0.20mm
Thickness   Height	1.00mm Max.
Recommended Land Pattern (A)	0.75mm Nom.
Recommended Land Pattern (B)	0.60mm Nom.
Recommended Land Pattern (C)	1.30mm Nom.

Electrical Characteristics	
Inductance	15μH ±20% at 1MHz
Rated Current (L Change) [Typ.]	340mA (30% Down)
Rated Current (L Change) [Max.]	310mA (30% Down)
Rated Current (Temperature Rise) [Typ.]	530mA (40°C Rise)
Rated Current (Temperature Rise) [Max.]	
DC Resistance [Typ.]	730mΩ
DC Resistance [Max.]	870mΩ
Self Resonant Frequency [Min.]	
Self Resonant Frequency [Typ.]	
Q [Min.]	
Q [Typ.]	

Other	
Operating Temp. Range (Including Self-Temp. Rise)	-40 to 105°C
Soldering Method	Reflow
AEC-Q200	NO
Packing	Embossed (Plastic)Taping [180mm Reel]

! Images are for reference only and show exemplary products.  
! This PDF document was created based on the data listed on the TDK Corporation website.  
! All specifications are subject to change without notice.



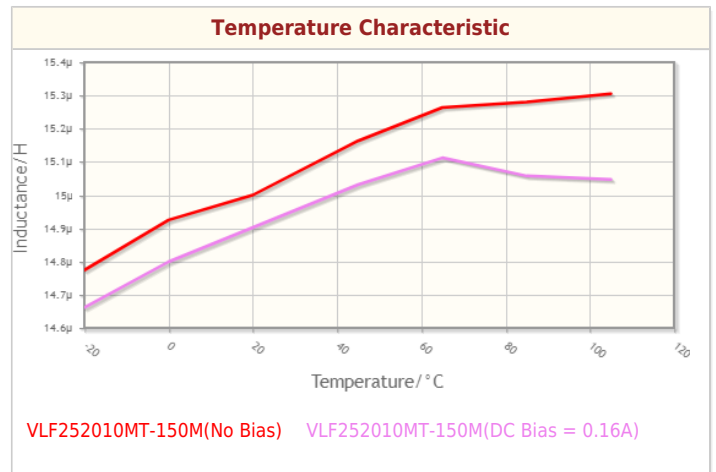
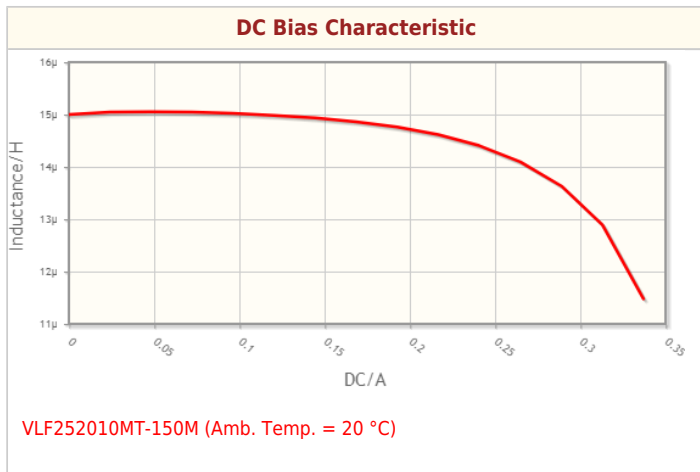
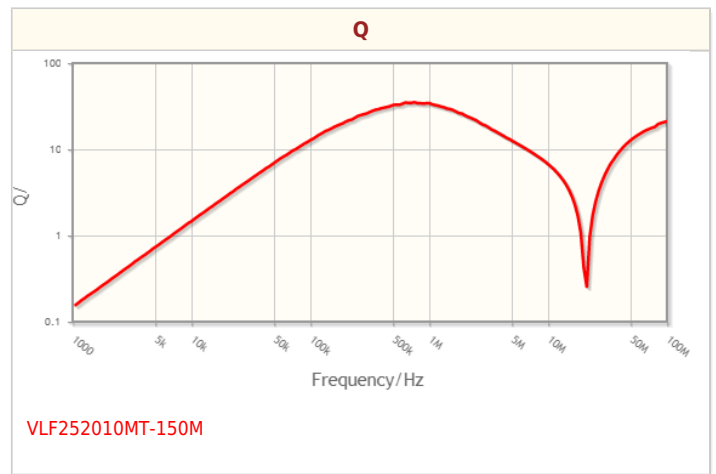
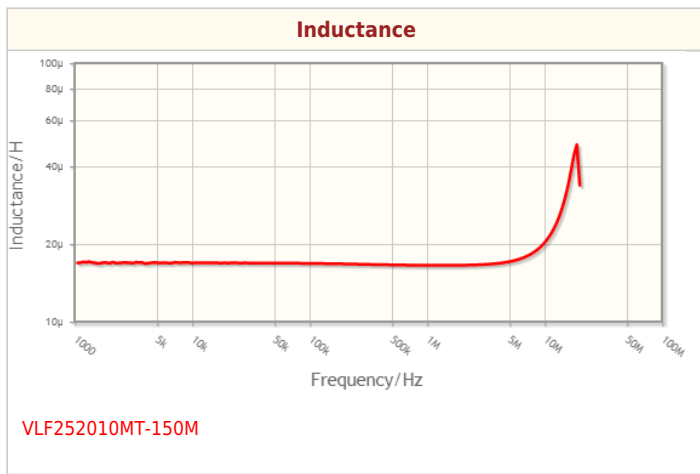
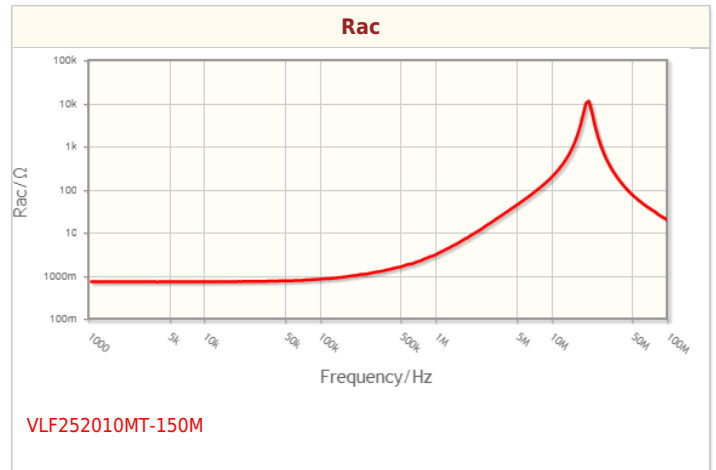
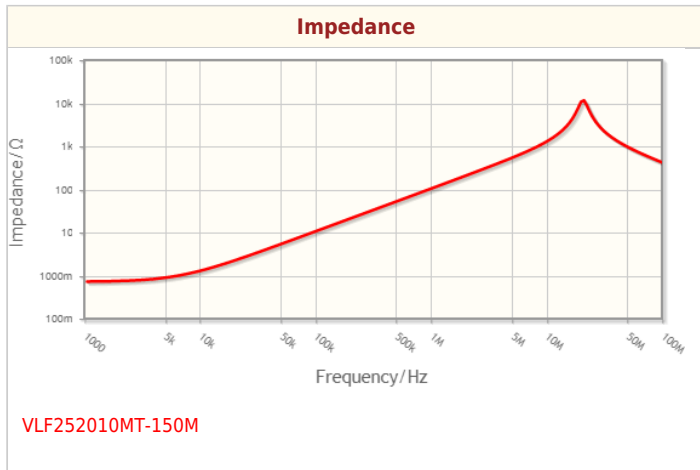
SMD / SMT Inductors (Coils)  
VLF252010MT-150M

RoHS Reach Halogen Free Pb Free

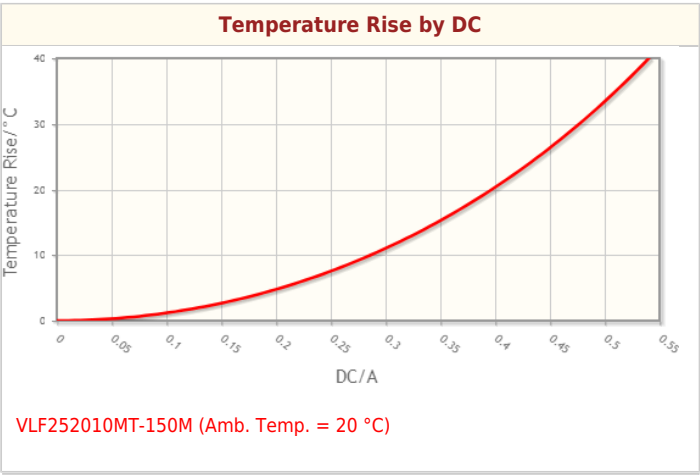
Package Quantity	2000pcs
Weight	0.017g

! Images are for reference only and show exemplary products.  
! This PDF document was created based on the data listed on the TDK Corporation website.  
! All specifications are subject to change without notice.

## Characteristic Graphs(This is reference data, and does not guarantee the products characteristics.)



# Characteristic Graphs(This is reference data, and does not guarantee the products characteristics.)



# Associated Images

