



AHEAD OF WHAT'S POSSIBLE™

Search



MY HISTORY

PARAMETRIC SEARCH

PRODUCTS

APPLICATIONS

DESIGN CENTER

COMMUNITY

EDUCATION

SUPPORT

Design Center > Reference Designs > Hardware Reference Designs > Circuits from the Lab > CN0273
 Design Center > Reference Designs > Hardware Reference Designs > Circuits from the Lab > CN0273



Print



My Analog

CN0273

High Speed FET Input Instrumentation Amplifier with Low Input Bias Current and High AC Common-Mode Rejection

Overview

Circuit Function & Benefits

Circuit Description

Common Variations

Circuit Evaluation & Test

Discussions

Sample Products



Reference Designs

参考回路: 日本語版



Design & Integration Files



Evaluation Hardware

View All (1)

Design Resources

Design & Integration Files

- Schematic
- Bill of Materials
- Gerber Files
- PADS Files
- Assembly Drawing

[Download Design Files](#)
(1612 kB)

Evaluation Hardware

Part Numbers with "Z" indicate RoHS Compliance. Boards checked are needed to evaluate this circuit EVAL-CN0273-EB1Z () High Speed FET Input Instrumentation Amplifier with Low Input Bias Current and High AC Common-Mode Rejection

[Check Inventory & Purchase](#)

Features & Benefits

- FET input instrumentation amplifier

Parts Used

- [ADA4817-2](#)
- [ADA4830-1](#)

Markets & Technology

Healthcare



- High bandwidth
- Small PCB footprint

Circuit Function & Benefits

The circuit shown in Figure 1 is a high speed FET input, gain of -5 instrumentation amplifier (in-amp) with a wide bandwidth (35 MHz) and excellent ac common-mode rejection, CMR, (55 dB at 10 MHz). The circuit is ideal for applications where a high input impedance, fast in-amp is required, including RF, video, optical signal sensing, and high speed instrumentation. The high CMR and bandwidth also makes it ideal as a wideband differential line receiver.

Most discrete in-amps require expensive matched resistor networks to achieve high CMR; however, this circuit uses an integrated difference amplifier with on-chip matched resistors to improve performance, reduce cost, and minimize printed circuit board (PCB) layout area.

The composite in-amp circuit shown in Figure 1 has the following performance:

- Offset voltage: 4 mV maximum
- Input bias current: 2 pA typical
- Input common-mode voltage: -3.5 V to +2.2 V maximum
- Input differential voltage: $\pm 3.5 \text{ V}/G_1$ maximum, where G_1 is the gain of the first stage
- Output voltage swing: 0.01 V to 4.75 V typical with 150 Ω load
- Bandwidth (-3 dB): 35 MHz typical for $G = 5$
- Common-mode rejection: 55 dB at 10 MHz typical
- Input voltage noise: 10 nV/ $\sqrt{\text{Hz}}$ at 100 kHz RTI typical
- Harmonic distortion: -60 dBc at 10 MHz, $G = 5$, $V_{\text{OUT}} = 1 \text{ V}_{\text{p-p}}$, $R_L = 1 \text{ k}\Omega$

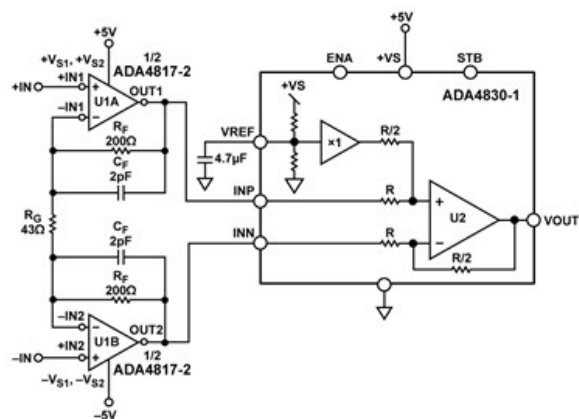


Figure 1. High Speed FET Input Instrumentation Amplifier (Note: Power Supply Decoupling Not Shown)

Most fully integrated in-amps are fabricated on bipolar or complementary bipolar processes and are optimized for low frequency applications with high CMR at 50 Hz or 60 Hz. However, there is a growing need for wide bandwidth in-amps for video and RF systems to amplify high speed signals and provide common-mode rejection of unwanted high frequency signals.

When a very high speed, wide bandwidth in-amp is needed, one common approach is to use two discrete op amps with high input impedance to buffer and amplify the differential input signal in the first stage, and then configure a single amplifier as a difference amplifier in the second stage to provide a differential-to-single-ended conversion. This configuration is known generally as a 3-op-amp in-amp. This approach requires four relatively expensive precision-matched resistors for good CMR. Errors in matching produce errors at the final output.

The circuit shown in Figure 1 solves this problem by using the ADA4830-1 integrated high speed difference amplifier. The laser-trimmed thin film resistors are matched to very high precision, thereby eliminating the need for four relatively expensive precision-matched external resistors.

In addition, the use of the high speed, dual ADA4817-2 as the input stage amplifier allows the composite in-amp to provide a bandwidth as high as 80 MHz when the overall gain of the circuit is 2.5.

The use of the dual ADA4817-2 amplifiers in a single 4 mm × 4 mm LFCSP package and the integrated ADA4830-1 difference amplifier significantly reduces board space, thereby reducing design costs for large systems.



Circuit Description



The circuit is based on the traditional 3-op-amp in-amp topology with two op amps for the input gain stage and a difference amplifier for the output stage. The circuit has a gain of 5 and a bandwidth of 35 MHz.

FET Amplifier Input Gain Stage

The ADA4817-2 (dual) *FastFET* amplifiers are unity-gain stable, ultrahigh speed voltage feedback amplifiers with FET inputs. These amplifiers are fabricated on Analog Devices, Inc., proprietary eXtra Fast Complementary Bipolar (XFCB) process, which allows the amplifiers to achieve ultralow noise as well as very high input impedances and high speed, making it ideal for applications where high speed and high source impedances are required.

The ADA4817-2 op amps are configured so that they share the R_G gain resistor. The circuit has a gain of $1 + 2R_F/R_G$ for the differential inputs. When the inputs are common-mode, there is no current flowing through the R_G gain resistor. Thus, the circuit acts as a buffer for the common-mode inputs. The common-mode inputs are then effectively removed by the second stage difference amplifier.

The ADA4817-2 has a unity-gain bandwidth product, f_u , of 410 MHz. Its close-loop bandwidth can be approximated by

$$f_{-3\text{ dB}} = f_u/G1$$

where $G1$ is the gain of the first stage.

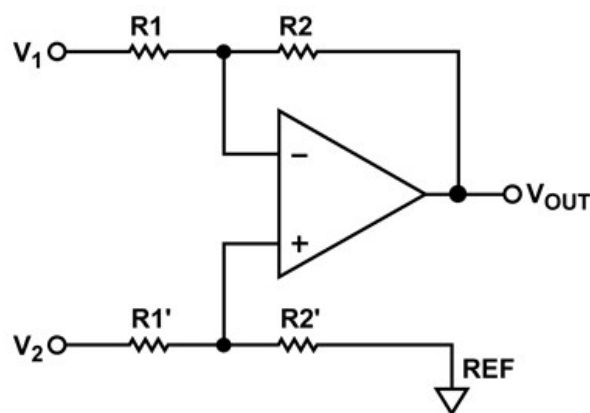
For this circuit, with a first stage closed-loop gain of 10, the -3 dB bandwidth is estimated to be 41 MHz. This is very close to the tested bandwidth of 35 MHz.

Parasitic capacitance in the PCB boards and capacitive loads can cause the first gain stage to oscillate. This issue can be alleviated by using low value feedback resistors, and the use of feedback capacitance.

For this circuit, a feedback resistor of $200\ \Omega$ was chosen. The feedback capacitor, C_F , was 2 pF for the best bandwidth flatness.

Difference Amplifier and CMR

The ADA4830-1 is high speed difference amplifier with a wide common-mode voltage range. It combines high speed and precision. It offers a fixed gain of $0.5\ \text{V/V}$, and -3 dB bandwidth of 84 MHz. The on-chip, laser-trimmed resistors yield a typical CMR of 55 dB at 10MHz. CMR is a very important specification for in-amps and depends mostly on the ratio matching of the four resistors used in the second stage difference amplifier, as is shown in Figure 2.



10692-002

Figure 2. Difference Amplifier

In general, the worst-case CMR is given by

$$\text{CMR (dB)} = 20 \log \left[\frac{1 + R2/R1}{4Kr} \right]$$

where Kr is the individual resistor tolerance in fractional form. The previous equation shows that the worst-case CMR

for four resistors with the same nominal values (1% tolerance) is 34 dB. Instead of using discrete resistors, this circuit uses a monolithic ADA4830-1 difference amplifier with on-chip, laser-trimmed thin film resistors, thereby providing excellent CMR and saving PCB space. The CMR is 65 dB at dc and 55 dB at 10 MHz.

Differential and Common-Mode Voltage Considerations

To maximize the input voltage range and simplify the power supply requirements, the first stage of the circuit operates on ± 5 V, whereas the second stage operates at +5 V. The maximum differential input range is determined by the output swing of the ADA4817-2. With a ± 5 V supply, the ADA4817-2 has an output swing of ± 3.5 V. Therefore, the maximum allowable differential input is ± 3.5 V/G₁, where G₁ is the gain of the first stage. Note that there is a tradeoff between the maximum allowable differential input and the closed-loop gain of the first stage.

The next step is to analyze the common-mode voltage restrictions. The common-mode voltage at the input to the ADA4817-2 must fall between $-V_S$ to $+V_S - 1.8$ V, or -5 V to $+2.2$ V for ± 5 V supplies. The output swing of the ADA4817-2 is limited to ± 3.5 V when operating on ± 5 V supplies (refer to the ADA4817-2 data sheet). The negative input common-mode voltage of the circuit is therefore limited to -3.5 V by the output swing of the ADA4817-2. Therefore, the allowable input common-mode range for the composite circuit is -3.5 V to $+2.2$ V.

To achieve high performance from this circuit, excellent layout, grounding, and decoupling techniques must be applied. See [MT-031 Tutorial](#), [MT-101 Tutorial](#), and the [A Practical Guide to High-Speed Printed-Circuit-Board Layout](#) article for more detailed information regarding PCB layout. In addition, there are layout guidelines within the ADA4817-2 datasheet and the ADA4830-1 data sheet.

Circuit Performance

The four most important parameters of this composite circuit, CMR, -3 dB bandwidth, input referred noise, and harmonic distortion, are tested, and the results are shown in Figure 3 to Figure 6.

Figure 3 shows that the CMR of the composite circuit is -65 dB at dc and -55 dB at 10 MHz. Figure 4 shows that the bandwidth is 35 MHz at a gain of 5 and an output load of 100Ω . Figure 5 shows that the composite circuit only has 10 nV/ $\sqrt{\text{Hz}}$ input-referred noise at 100 kHz and a flatband noise of 8 nV/ $\sqrt{\text{Hz}}$ at higher frequencies. Figure 6 shows that the circuit has a THD of 60 dBc at 10 MHz, with $V_{\text{OUT}} = 1$ V_{p-p} and $R_L = 1$ k Ω .

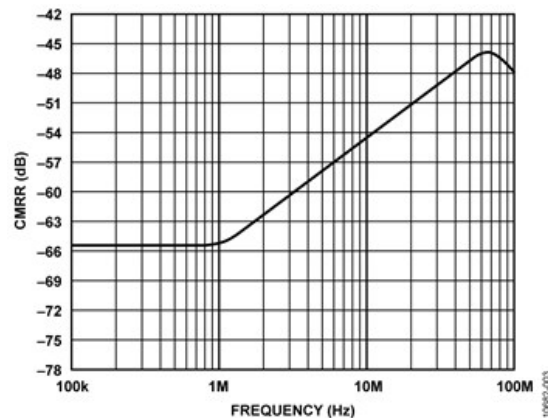


Figure 3. CMR of the CN-0273

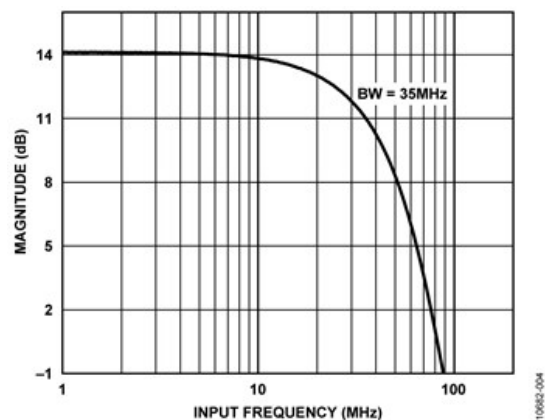


Figure 4. Frequency Response of Composite Circuit, $V_{\text{OUT}} = 1$ V_{p-p}, $R_L = 100 \Omega$

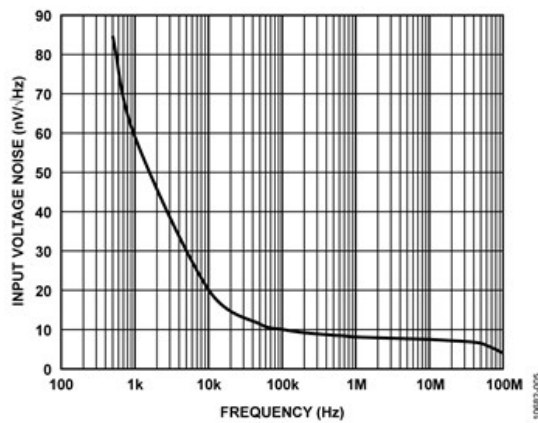


Figure 5. Input Referred Voltage Noise of Composite Circuit

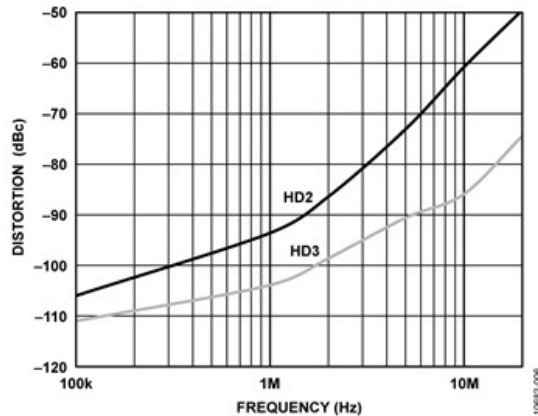


Figure 6. Second (HD2) and Third (HD3) Harmonic Distortion, $V_{OUT} = 1 V_{p-p}$, $R_L = 1 k\Omega$

Common Variations

The overall gain of this circuit can be easily configured by the value of the gain resistor, R_G , shown in Figure 1. Note that with a larger overall gain, the bandwidth of this circuit decreases.

The difference amplifier at the second stage can be replaced by the [AD8274](#) in lower speed applications. The AD8274 difference amplifier offers a fixed gain of 2. Therefore, a larger overall gain can be achieved.

To increase the input common-mode and differential range, a rail-to-rail high speed FET input amplifier, such as the [AD8065/ AD8066](#) that operates on $\pm 12 V$ supplies and has a unity-gain bandwidth of 145 MHz, can be used.

Circuit Evaluation & Test

The circuit can be easily evaluated using a signal generator and an oscilloscope. The board is tested with traditional amplifier test methods using a network analyzer. For complete schematics and PCB layout, refer to the CN0273-Design Support package. A photo of the board is shown in Figure 7.

Note that the CMRR data in Figure 3 was taken for a differential input voltage of 0 V. The bandwidth data in Figure 4 and the distortion data in Figure 6 were taken using a balanced differential drive source with a common-mode voltage of 0 V.



Figure 7. Photo of the EVAL-CN0273-EB1Z Evaluation Board

Discussions

[Community Discussion In Engineering Zone](#)

Sample Products

Samples

Product	Description	Available Product Models to Sample
ADA4817-2	Dual, Low Noise, 1 GHz <i>FASTFet</i> Operational Amplifier	<input type="checkbox"/> ADA4817-2ACPZ-R7
ADA4830-1	High Speed Difference Amplifier with Input Short to Battery Protection	<input type="checkbox"/> ADA4830-1BCPZ-R7

[Add Selections to Cart](#)

Evaluation Boards

Pricing displayed is based on 1-piece.

Model	Description	Price	RoHS
EVAL-CN0273-EB1Z Production	High Speed FET Input Instrumentation Amplifier with Low Input Bias Current and High AC Common-Mode Rejection		Yes

[Back](#)

[Add to cart](#)

[UNITED STATES](#) ▾

[Check Inventory](#)

Pricing displayed is based on 1-piece. The USA list pricing shown is for budgetary use only, shown in United States dollars (FOB USA per unit), and is subject to change. International prices may vary due to local duties, taxes, fees and exchange rates.

15,000

Problem Solvers

4,700+

Patents Worldwide

125,000

Customers

50+

Years

Ahead of What's Possible

Analog Devices is a global leader in the design and manufacturing of analog, mixed signal, and DSP integrated circuits to help solve the toughest engineering challenges.

[See the Innovations](#)

Analog Devices. Dedicated to solving the toughest engineering challenges.

SOCIAL



QUICK LINKS

[About ADI](#)
[Analog Dialogue](#)
[Contact us](#)
[News Room](#)
[Sales & Distribution](#)

[Alliances](#)
[Careers](#)
[Investor Relations](#)
[Quality & Reliability](#)

LANGUAGES

[English](#)
[简体中文](#)
[日本語](#)
[Русский](#)

NEWSLETTERS

Interested in the latest news and articles about ADI products, design tools, training and events? Choose from one of our 12 newsletters that match your product area of interest, delivered monthly or quarterly to your inbox.

[Sign Up](#)