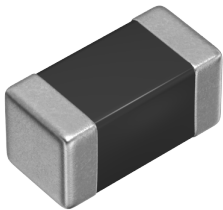


MLZ1608DR47DTD25



Applications	Automotive Grade
Feature	<div>Shield</div> <div>Magnetic Shield</div> <div>Multilayer</div> <div>Multilayer</div> <div>Ferrite Core</div> <div>Ferrite Core</div> <div>AEC-Q200</div> <div>AEC-Q200</div>
Series Type	MLZ
Status	Production
Brand	TDK



Size	
Length(L)	1.60mm ±0.15mm
Width(W)	0.80mm ±0.15mm
Thickness Height	0.80mm ±0.15mm
Recommended Land Pattern (A)	0.60mm Nom.
Recommended Land Pattern (B)	0.80mm Nom.
Recommended Land Pattern (C)	0.80mm Nom.

Electrical Characteristics	
Inductance	470nH ±20% at 25MHz
Rated Current (L Change) [Typ.]	
Rated Current (L Change) [Max.]	400mA (50% Down)
Rated Current (Temperature Rise) [Typ.]	500mA (20°C Rise)
Rated Current (Temperature Rise) [Max.]	
DC Resistance [Typ.]	420mΩ
DC Resistance [Max.]	546mΩ
Self Resonant Frequency [Min.]	
Self Resonant Frequency [Typ.]	
Q [Min.]	
Q [Typ.]	

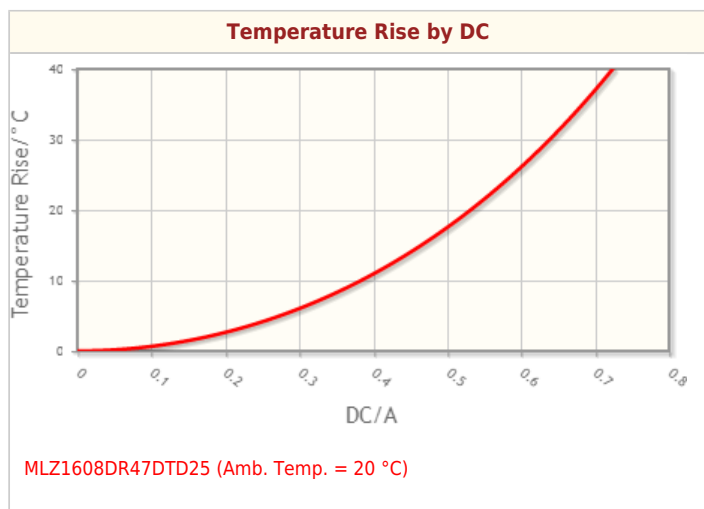
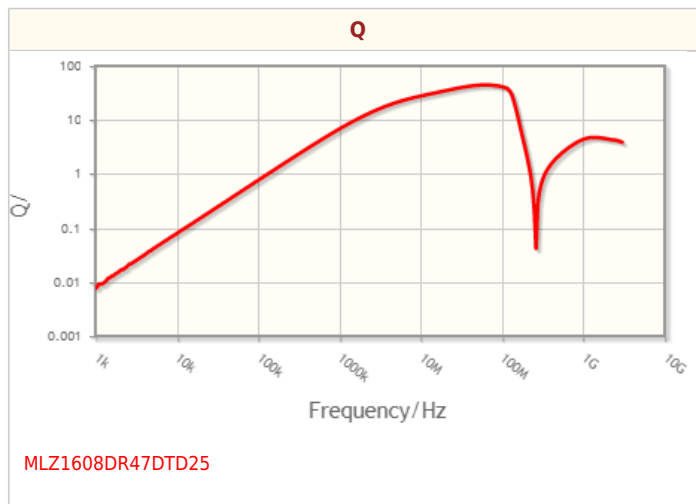
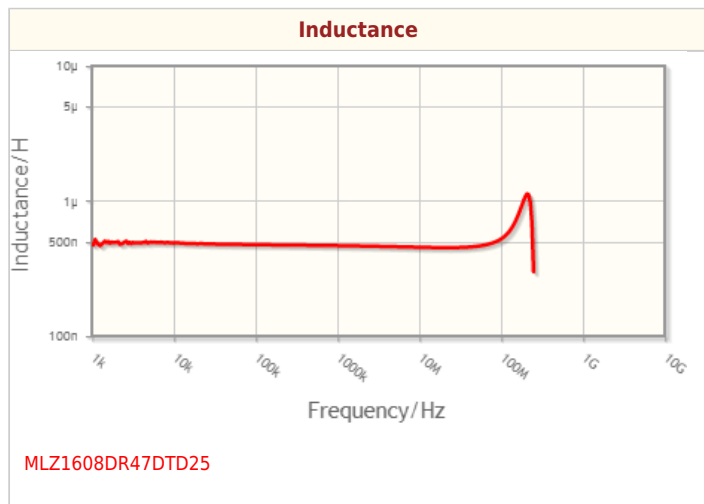
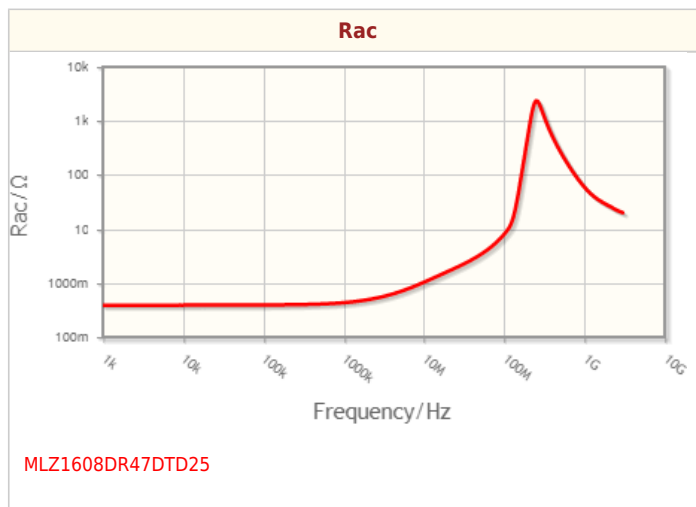
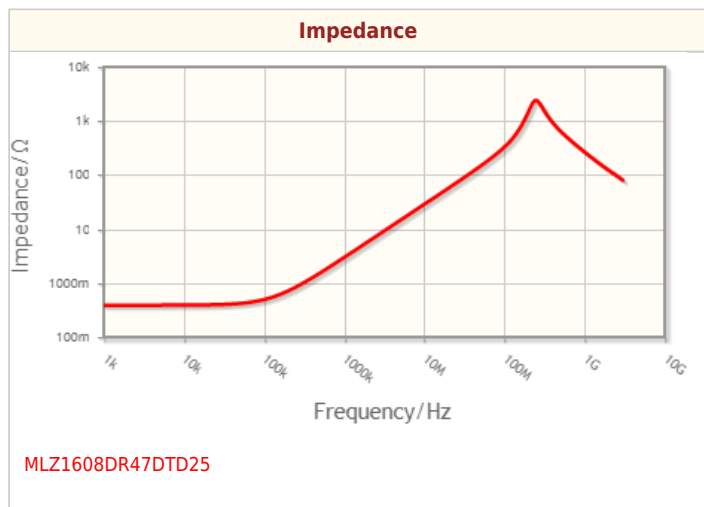
Other	
Operating Temp. Range (Including Self-Temp. Rise)	-55 to 125°C
Soldering Method	Reflow Iron Soldering
AEC-Q200	Yes
Packing	Punched (Paper)Taping [180mm Reel]
Package Quantity	4000pcs
Weight	0.004g

! Images are for reference only and show exemplary products.
! This PDF document was created based on the data listed on the TDK Corporation website.
! All specifications are subject to change without notice.

MLZ1608DR47DTD25



Characteristic Graphs(This is reference data, and does not guarantee the products characteristics.)





Associated Images

