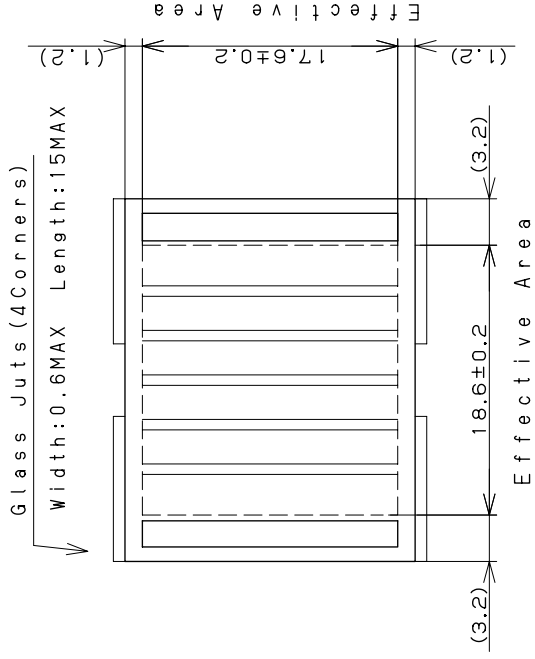


Amorphous Silicon Solar Cells Specification
アモルファスシリコン太陽電池 仕様

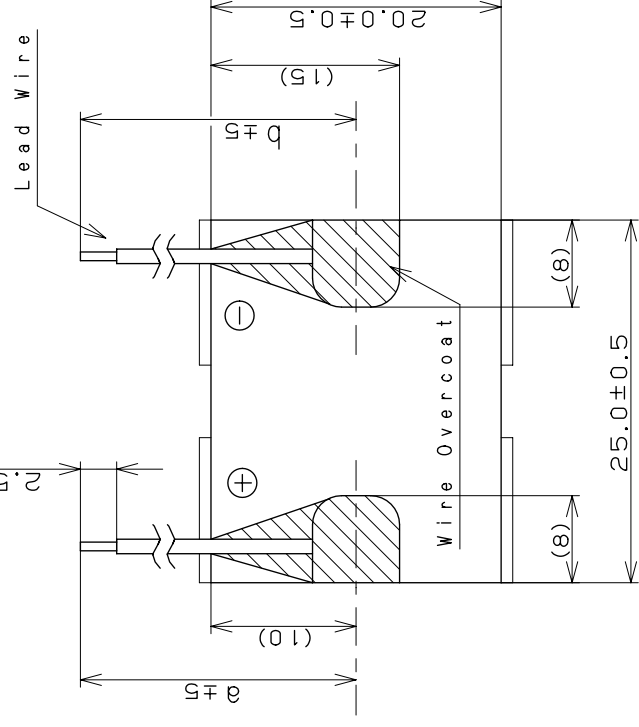
Model : AM-5610CAR

1. Outside dimensions 外形寸法

Light Receiving Side (受光面)



Overcoat Side (オハコート面)



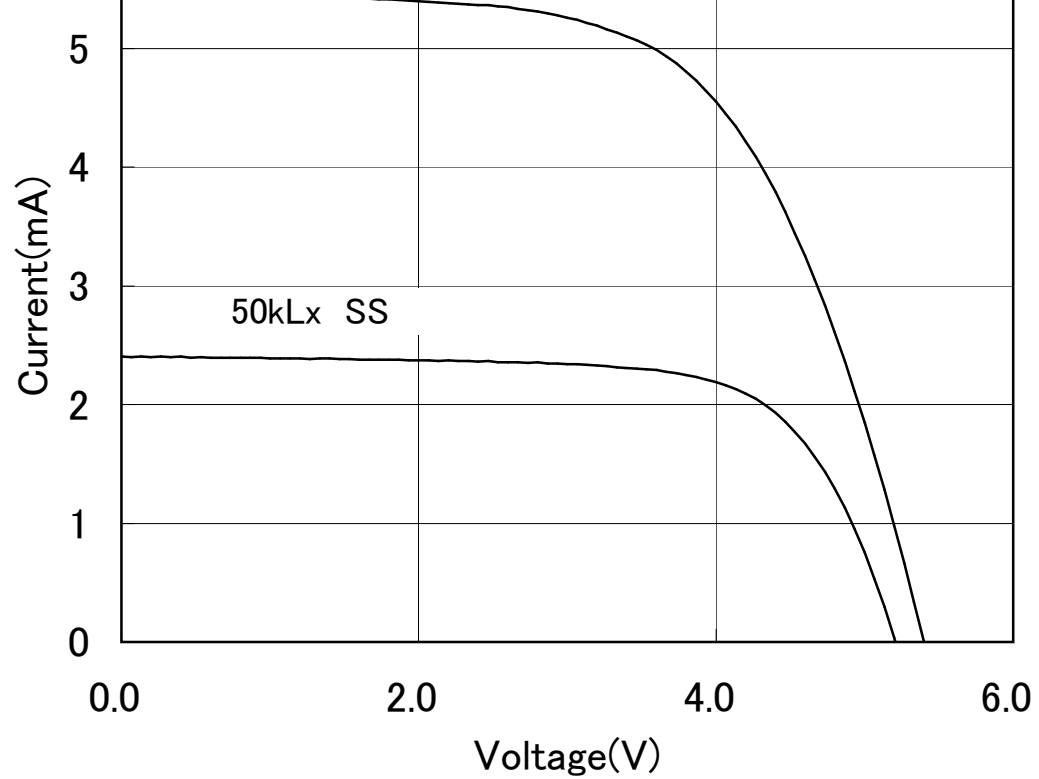
(dimension: mm)

Lead Wires : AWG30
a : 70
b : 70

Note
Glass Substrate Thickness (ガラス基板厚) : 1.8mm ± 0.2
Module Thickness (モジュール厚) : 2.2mm MAX
Wire-Overcoat Thickness : 3.3mm MAX (including Module)
(リード線補正コート厚)

2. Rated Specifications (at 25°C)

Item	Specifications (Initial)
2.1 Open circuit voltage: Voc 開放電圧	Typical 5.1V at 50kLx SS
2.2 Short circuit Current: Isc 短絡電流	Typical 2.4mA at 50kLx SS
2.3 Operating Voltage & Operating Current: Vo _{op} -I _{op} 動作特性	Minimum 3.0V - 1.7mA at 50kLx SS
	Typical 3.3V - 2.3mA at 50kLx SS
	Typical 3.3V - 5.1mA at AM-1.5 100mW/cm ²
2.4 Maximum output: P _{max} & optimum operating Volt: V _{op} optimum operating Current: I _{op} 最大出力	(reference) 8mW V _{op} =3.9V I _{op} =2.2mA at 50kLx SS
	(reference) 18mW V _{op} =3.9V I _{op} =4.6mA at AM-1.5 100mW/cm ²
2.5 Working temperature range: T _{opr} 動作温度範囲	-10 to 60°C
2.6 Storage temperature range: T _{stg} 保存温度範囲	-20 to 70°C

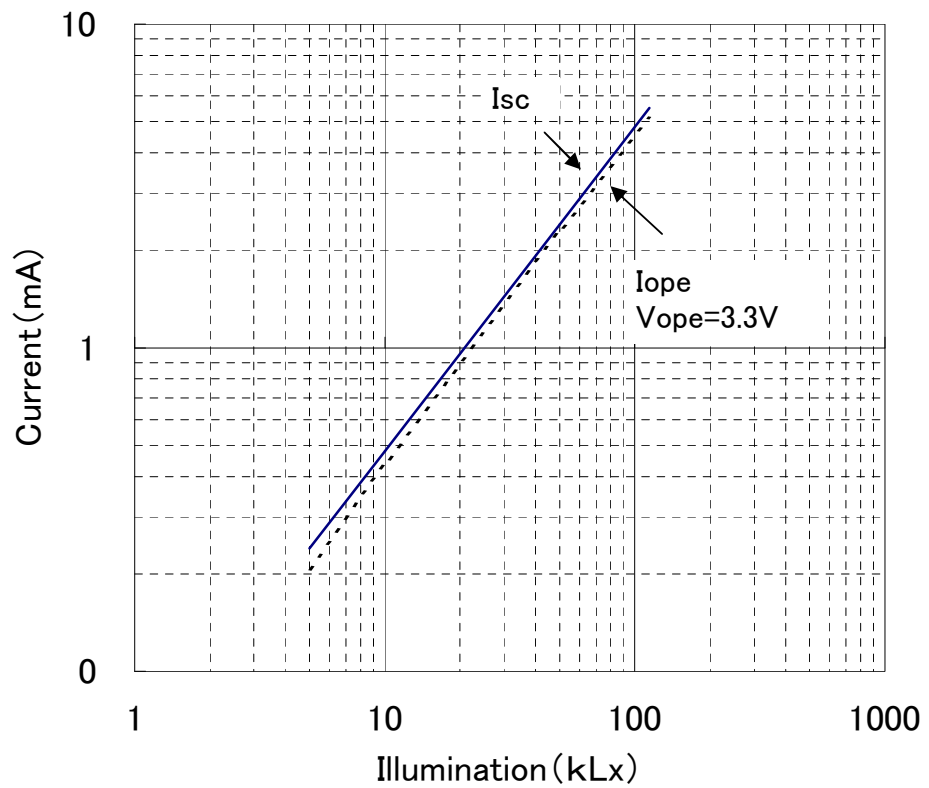
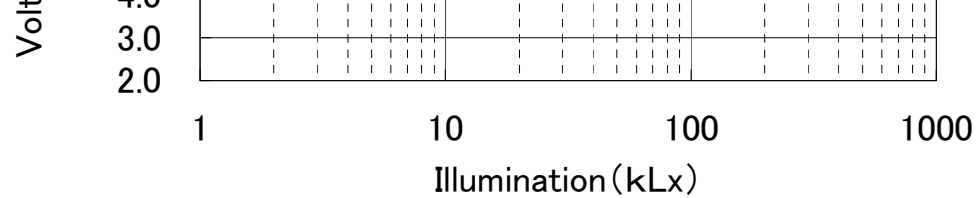


*このデータは標準的な出力特性を示すものであり、特性を保証するものではありません。

*The data are meant to show standard electric characteristics only , not intended to guarantee the characteristics.

Panasonic Eco Solutions Amorton Co.,Ltd.

2014/1/10

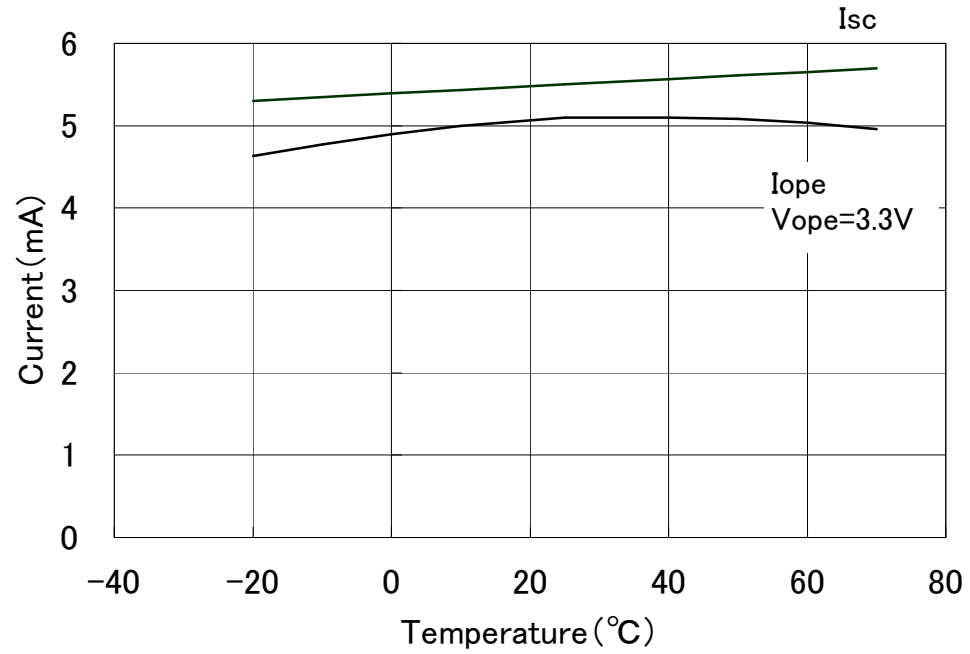
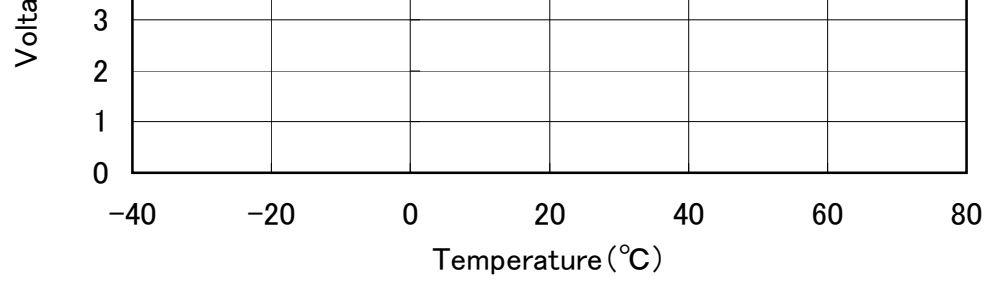


*このデータは標準的な出力特性を示すものであり、特性を保証するものではありません。

*The data are meant to show standard electric characteristics only , not intended to guarantee the characteristics.

Panasonic Eco Solutions Amorton Co.,Ltd.

2014/1/10



*このデータは標準的な出力特性を示すものであり、特性を保証するものではありません。

*The data are meant to show standard electric characteristics only, not intended to guarantee the characteristics.

Panasonic Eco Solutions Amorton Co.,Ltd.

2014/1/10