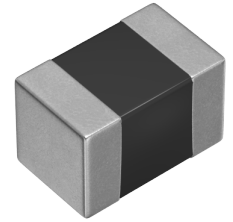


| | |
|----------------------|---|
| Applications | Commercial Grade |
| Feature | <div style="border: 1px solid red; padding: 2px;">Multilayer</div> Multilayer <div style="border: 1px solid green; padding: 2px;">Shield</div> Magnetic Shield <div style="border: 1px solid gray; padding: 2px;">Ferrite Core</div> Ferrite Core |
| Series Type | MLF |
| Status | Production |
| Brand | TDK |



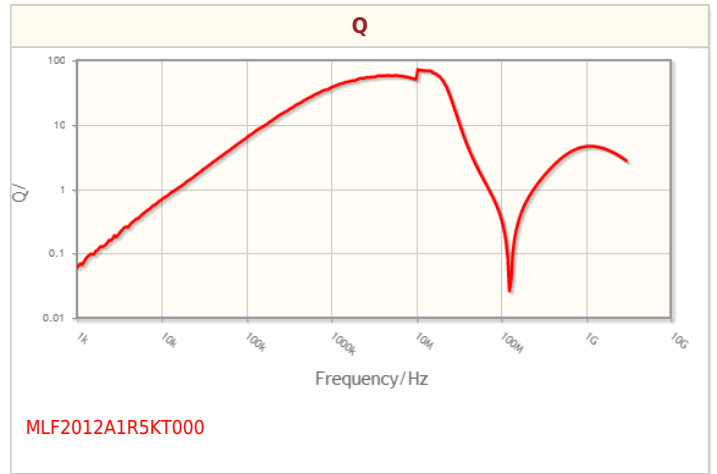
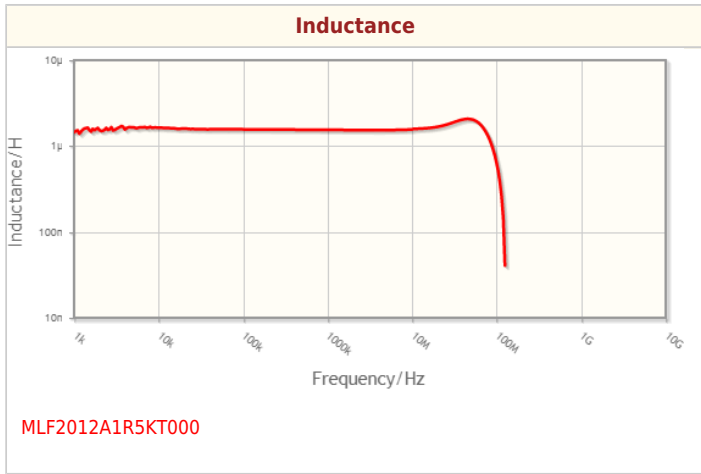
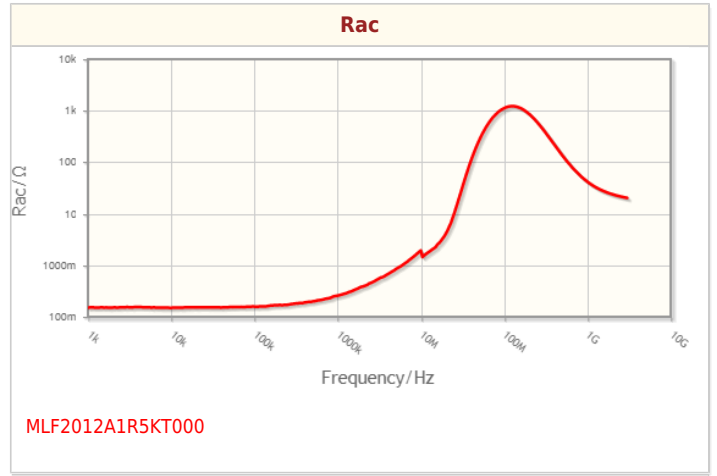
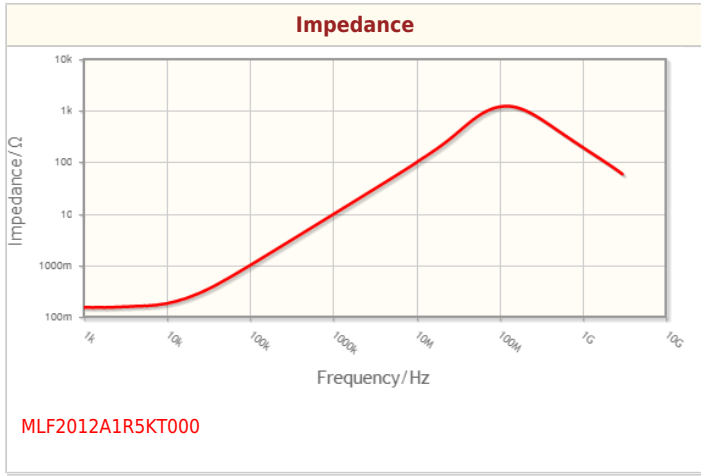
| Size | |
|------------------------------|----------------|
| Length(L) | 2.00mm ±0.20mm |
| Width(W) | 1.25mm ±0.20mm |
| Thickness Height | 0.85mm ±0.20mm |
| Recommended Land Pattern (A) | 0.80mm Nom. |
| Recommended Land Pattern (B) | 1.00mm Nom. |
| Recommended Land Pattern (C) | 1.20mm Nom. |

| Electrical Characteristics | |
|---|---------------------|
| Inductance | 1.5µH ±10% at 10MHz |
| Rated Current (L Change) [Typ.] | |
| Rated Current (L Change) [Max.] | 80mA |
| Rated Current (Temperature Rise) [Typ.] | |
| Rated Current (Temperature Rise) [Max.] | |
| DC Resistance [Typ.] | 180mΩ |
| DC Resistance [Max.] | 400mΩ |
| Self Resonant Frequency [Min.] | 100MHz |
| Self Resonant Frequency [Typ.] | 140MHz |
| Q [Min.] | 45 at 10MHz |
| Q [Typ.] | 60 at 10MHz |

| Other | |
|---|------------------------------------|
| Operating Temp. Range (Including Self-Temp. Rise) | -55 to 125°C |
| Soldering Method | Reflow |
| | Iron Soldering |
| AEC-Q200 | NO |
| Packing | Punched (Paper)Taping [180mm Reel] |
| Package Quantity | 4000pcs |
| Weight | 0.01g |

! Images are for reference only and show exemplary products.
 ! This PDF document was created based on the data listed on the TDK Corporation website.
 ! All specifications are subject to change without notice.

Characteristic Graphs(This is reference data, and does not guarantee the products characteristics.)



! Images are for reference only and show exemplary products.
! This PDF document was created based on the data listed on the TDK Corporation website.
! All specifications are subject to change without notice.

Associated Images

