

EVAL-ADUCM300QSPZ Development System Getting Started Tutorial

DEVELOPMENT SYSTEM KIT CONTENTS

Evaluation board (EVAL-ADUCM300QSPZ) that facilitates evaluation of the device with minimum external components

Analog Devices, Inc., J-Link OB emulator (USB-SWD/UART-EMUZ)

USB cable

INTRODUCTION

The [ADuCM300](#) is a fully integrated, 8 kSPS, data acquisition system that incorporates dual, high performance, multichannel, Σ - Δ analog-to-digital converters (ADCs), a 32-bit Arm[®] Cortex[®]-M3 processor, and flash memory. The [ADuCM300](#) has a 128 kB program flash, 4 kB data flash, and 6 kB static random access memory (SRAM).

The [ADuCM300](#) is fully qualified for general automotive sensing applications and can interface to multiple external precision sensors in a system solution that also integrates a programmable Cortex-M3 microcontroller to postprocess the sensor signals on-chip, before transmitting the results off chip via industry-standard wired interfaces.

The [ADuCM300](#) integrates all of the required features to precisely and intelligently interface, monitor, process, and diagnose a precision sensing system over a wide range of operating conditions.

The EVAL-ADUCM300QSPZ development system supports the [ADuCM300](#) and allows a flexible platform for evaluation of the [ADuCM300](#) silicon. The evaluation board allows quick removal and insertion of a device via a 32-lead lead frame chip scale package (LFCSP) socket and provides the connections necessary to allow rapid measurement setups. Switches and LEDs are provided on the evaluation board to assist in debugging and simple code development. Sample code projects are also provided to illustrate key features of each peripheral and examples of how these peripherals can be configured.

This user guide provides step-by-step details of how to set up and configure the example software, available from the **Tools & Simulation** section of the [ADuCM300](#) product page.

By working through this user guide, users can start to generate and download their own user code for use in their own, unique end-system requirements.

For full details, see the [ADuCM300](#) data sheet, which must be consulted in conjunction with this user guide when working with the evaluation board.

EVAL-ADUCM300QSPZ SOCKETED EVALUATION BOARD SETUP

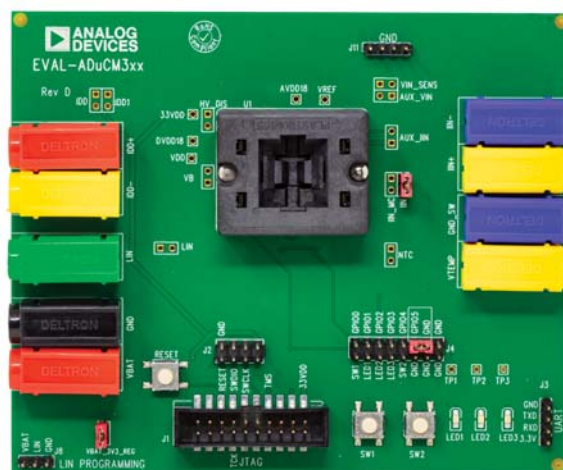


Figure 1.

2035F-001

TABLE OF CONTENTS

Development System Kit Contents	1	Software Installation Procedure	3
Introduction	1	Verifying the J-Link Driver	3
EVAL-ADUCM300QSPZ Socketed Evaluation Board Setup.....	1	Connect the Development System	4
Revision History	2	Keil μ Vision5 Integrated Development Environment.....	5
Evaluation Board Quick Start Procedures	3	Starting Keil μ Vision5.....	5

REVISION HISTORY

6/2019—Revision 0: Initial Version

EVALUATION BOARD QUICK START PROCEDURES

SOFTWARE INSTALLATION PROCEDURE

The following items are required to begin the software installation procedure:

- Keil μ Vision software Version 5 (μ Vision5) or higher
- CMSIS pack for [ADuCM300](#)
- Segger debugger interface driver and utilities

Complete the steps described in this section before plugging any of the USB devices into the PC.

Support files for the μ Vision5 software are available on the **Tools & Simulations** section of the [ADuCM300](#) product page. CMSIS packs are required for μ Vision5 and newer and are available on the [ADuCM300](#) product page.

To install the μ Vision5 software, take the following steps:

1. Close all open applications.
2. Download and install μ Vision5 (or higher) from the Keil website.
3. From the Segger website, download and install the latest **J-Link software & documentation pack for Windows**.
4. From the [ADuCM300](#) product page, download the CMSIS pack for the [ADuCM300](#).

VERIFYING THE J-LINK DRIVER

To install the J-Link driver, take the following steps:

1. Follow the sequence of instructions provided by Segger to download and install the J-Link driver.
2. When the software installation is complete, plug the debugger/programmer into the USB port of the PC with the supplied USB cable.
3. Verify that the emulator board appears in the Windows® **Device Manager** window (see Figure 2).

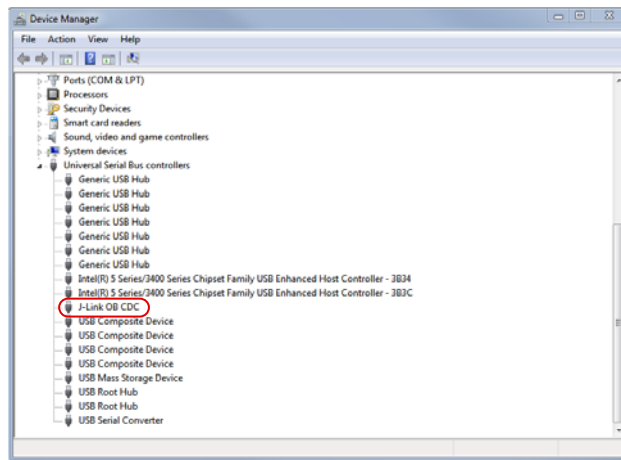


Figure 2. **Device Manager** Window

CONNECT THE DEVELOPMENT SYSTEM

To connect the development system, take the following steps:

1. Ensure proper orientation and insert an [ADuCM300](#) device. Note that Pin 1 of the device is indicated by a dot in the corner. The dot on the device must be oriented with the dot on the socket, as shown in Figure 1.

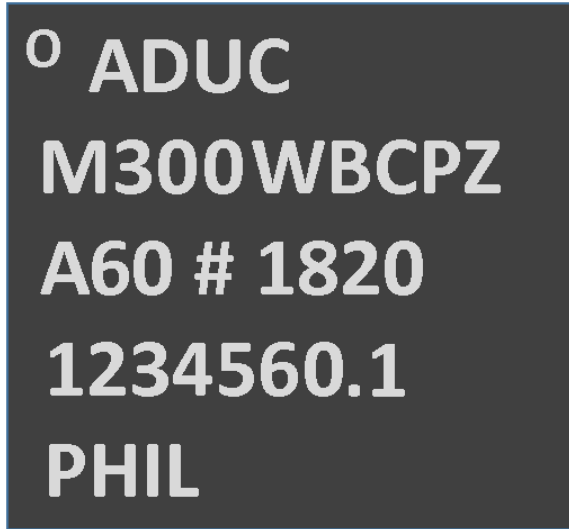


Figure 3. [ADuCM300](#) Device Orientation

2. Connect the debugger/programmer, noting the proper orientation, as shown in Figure 4.
3. Connect the board supply voltage (12 V dc) between the VBAT and GND banana sockets.
4. Ensure that the board jumpers are in position, as shown in Figure 1.
5. Ensure that the GPIO5 jumper is in place (beside the LIN jumper). The GPIO5 jumper is used by the on-board kernel to determine program flow after a reset. See the [ADuCM300 Hardware Reference Manual](#) for full details.
6. Press the RESET button.

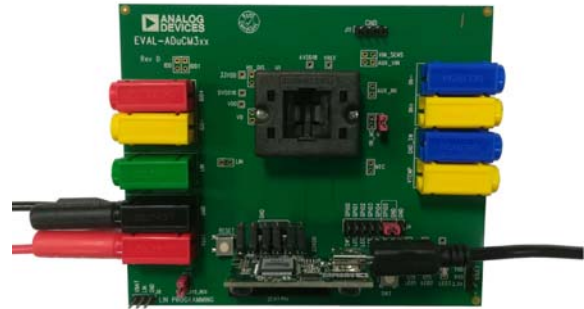


Figure 4. Mini Link Debugger/Programmer Connection

Table 1. Jumper Functionality

Jumper	Functionality
J4 (GPIO0)	This jumper connects Push-Button 1 to GPIO0 of the device.
J4 (GPIO1, GPIO2, GPIO3)	These jumpers connect the LEDs to GPIO1, GPIO2 and GPIO3 of the device.
J4 (GPIO4)	This jumper connects Push-Button 2 to GPIO4 of the device.
J4 (GPIO5)	This jumper ties the GPIO5 pin of the device to GND. This jumper must be connected when programming the device or when accessing via serial wire debug (SWD).
VBAT_3V3_REG	This jumper enables the 3.3 V regulator on the underside of the printed circuit board (PCB) and powers the LEDs or an additional 3.3 V source.
LIN	Not inserted, connected via and OR link. This jumper can disconnect the LIN terminal (green banana socket) from the device when the OR link is removed.
ID1, ID11	Not inserted, connected via an OR link. This jumper allows the insertion of an ammeter in series with the supply voltage through the I _{DD+} /I _{DD} sockets for current measurement when the OR link is removed.
VB	Not inserted, connected via an OR link. This jumper allows the supply voltage to disconnect from the VBAT input when the OR link is removed.
AUX_VIN	Not inserted, the AIN6 and AIN7 pins are connected to GND via the OR link.
VIN_SENS	Not inserted, this jumper allows to connect a sensor to the AIN6 and AIN7 inputs of the device when the OR link connecting the AIN6 and AIN7 inputs to GND are removed.
IIN	This jumper shorts the inputs of the AIN0 and AIN1 pins.
IIN_MC	Not inserted, allows to connect to signal at the AIN0 and AIN1 pins.
AUX_IIN	Not inserted, the AIN2 and AIN3 pins are connected to GND via the OR link.
NTC	Not inserted, this jumper allows an external temperature device to be connected between the AIN5 and GND_SW pins of the device.
J1	J1 is the JTAG programming interface. Allowing to use a JTAG with SWD capability.
J2	J2 is the SWD programming interface. Check orientation with Figure 4.
J3	J3 allows for GPIO1 and GPIO4 to be used as universal asynchronous receiver/transmitter (UART) connection operating the device local interconnect network (LIN) logic in UART mode.
J4	J4 is a general-purpose input/output (GPIO) header.
J8	J8 is a header for programming via LIN using the USB-I2C/LIN-CONVZ dongle.
J11	Ground header.

KEIL μVISION5 INTEGRATED DEVELOPMENT ENVIRONMENT

The Keil μVision5 integrated development environment (IDE) integrates all the tools necessary to edit, assemble, and debug code. The ADuCM300 development system supports nonintrusive emulation limited to 32 kB code. This section describes the project setup steps to download and debug code on an ADuCM300 development system. It is recommended to use the J-Link debugger driver.

STARTING KEIL μVISION5

Ensure that the CMSIS pack for the ADuCM300 has been installed (see the Evaluation Board Quick Start Procedures section).

After installing the μVision5 software, a shortcut appears on the PC desktop. Double-click the shortcut to open the μVision5 software (see Figure 5).

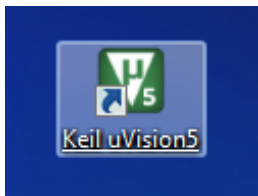


Figure 5. Keil μVision5 Desktop Shortcut

1. When the Keil software opens, click the **Pack Installer** icon on the toolbar (see Figure 6).



Figure 6. Pack Installer Button

2. The **Pack Installer** window opens (see Figure 7).

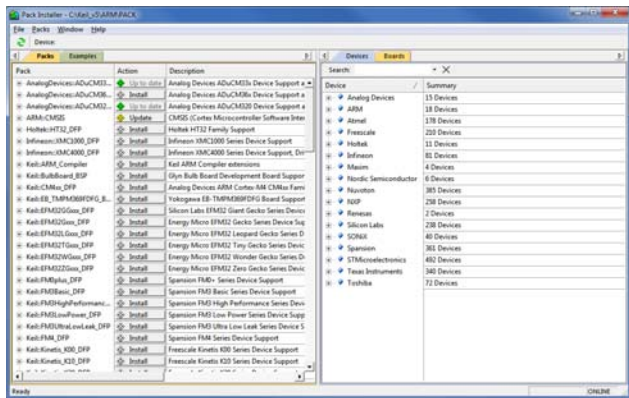


Figure 7. Pack Installer Window

3. Install the CMSIS pack. In the **Pack Installer** window, click **File > Import** and locate the downloaded CMSIS pack. Follow the prompts to install the pack.

4. In the **Devices** tab, click **Analog Devices > ADuCM300 Series > ADuCM300** (see Figure 8).

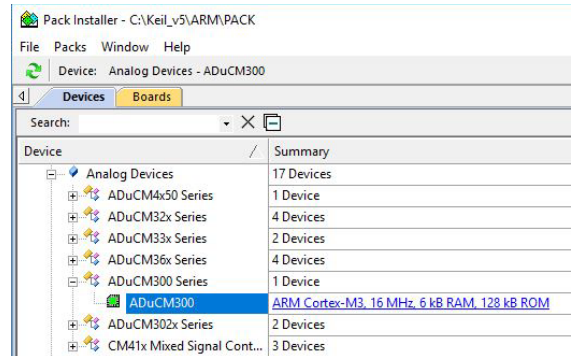


Figure 8. Devices Tab

5. Click the **Examples** tab (see Figure 9).

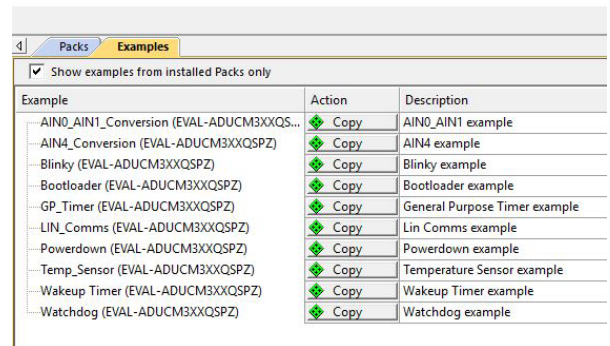


Figure 9. Examples Tab

6. Select the **Blinky (EVAL-ADUCM3XXQSPZ)** example and click **Copy**.
7. Choose a destination folder and click **Ok** to install the **Blinky (EVAL-ADUCM3XXQSPZ)** example and necessary startup files on the PC.

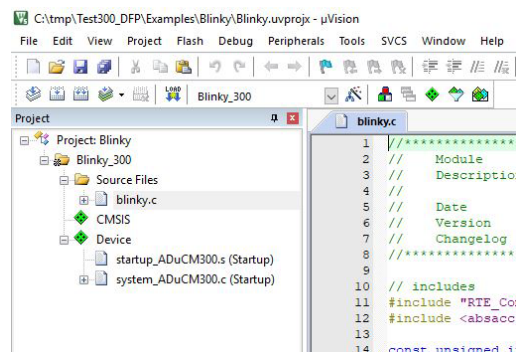


Figure 10. Blinky (EVAL-ADUCM3XXQSPZ) Example

- The example must be compiled by clicking the **Rebuild** button on the toolbar (see Figure 11).



Figure 11. **Rebuild** Button

- When the build is complete, the message shown in Figure 12 appears.

```
Build Output
Rebuild started: Project: Blinky
*** Using Compiler 'V5.06 update 6 (build 750)', folder: '
Rebuild target 'Blinky_300'
assembling startup_ADuCM300.s...
compiling system_ADuCM300.c...
compiling blinky.c...
linking...
Program Size: Code=492 RO-data=1556 RW-data=0 ZI-data=352
".\Objects\Blinky.axf" - 0 Error(s), 0 Warning(s).
Build Time Elapsed: 00:00:01
```

Figure 12. **Build Output** Window

- To download the code to the EVAL-ADUCM300QSPZ board, click **Load** (see Figure 13).

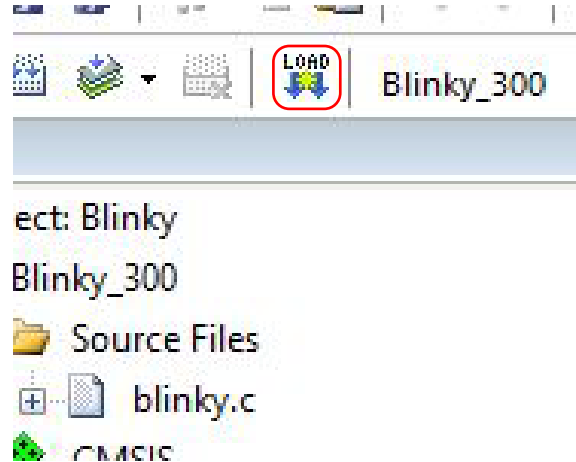


Figure 13. **Load** Button

- When the code is downloaded to the evaluation board, the two LEDs blink repeatedly.



ESD Caution

ESD (electrostatic discharge) sensitive device. Charged devices and circuit boards can discharge without detection. Although this product features patented or proprietary protection circuitry, damage may occur on devices subjected to high energy ESD. Therefore, proper ESD precautions should be taken to avoid performance degradation or loss of functionality.

Legal Terms and Conditions

By using the evaluation board discussed herein (together with any tools, components documentation or support materials, the "Evaluation Board"), you are agreeing to be bound by the terms and conditions set forth below ("Agreement") unless you have purchased the Evaluation Board, in which case the Analog Devices Standard Terms and Conditions of Sale shall govern. Do not use the Evaluation Board until you have read and agreed to the Agreement. Your use of the Evaluation Board shall signify your acceptance of the Agreement. This Agreement is made by and between you ("Customer") and Analog Devices, Inc. ("ADI"), with its principal place of business at One Technology Way, Norwood, MA 02062, USA. Subject to the terms and conditions of the Agreement, ADI hereby grants to Customer a free, limited, personal, temporary, non-exclusive, non-sublicensable, non-transferable license to use the Evaluation Board FOR EVALUATION PURPOSES ONLY. Customer understands and agrees that the Evaluation Board is provided for the sole and exclusive purpose referenced above, and agrees not to use the Evaluation Board for any other purpose. Furthermore, the license granted is expressly made subject to the following additional limitations: Customer shall not (i) rent, lease, display, sell, transfer, assign, sublicense, or distribute the Evaluation Board; and (ii) permit any Third Party to access the Evaluation Board. As used herein, the term "Third Party" includes any entity other than ADI, Customer, their employees, affiliates and in-house consultants. The Evaluation Board is NOT sold to Customer; all rights not expressly granted herein, including ownership of the Evaluation Board, are reserved by ADI. CONFIDENTIALITY. This Agreement and the Evaluation Board shall all be considered the confidential and proprietary information of ADI. Customer may not disclose or transfer any portion of the Evaluation Board to any other party for any reason. Upon discontinuation of use of the Evaluation Board or termination of this Agreement, Customer agrees to promptly return the Evaluation Board to ADI. ADDITIONAL RESTRICTIONS. Customer may not disassemble, decompile or reverse engineer chips on the Evaluation Board. Customer shall inform ADI of any occurred damages or any modifications or alterations it makes to the Evaluation Board, including but not limited to soldering or any other activity that affects the material content of the Evaluation Board. Modifications to the Evaluation Board must comply with applicable law, including but not limited to the RoHS Directive. TERMINATION. ADI may terminate this Agreement at any time upon giving written notice to Customer. Customer agrees to return to ADI the Evaluation Board at that time. LIMITATION OF LIABILITY. THE EVALUATION BOARD PROVIDED HEREUNDER IS PROVIDED "AS IS" AND ADI MAKES NO WARRANTIES OR REPRESENTATIONS OF ANY KIND WITH RESPECT TO IT. ADI SPECIFICALLY DISCLAIMS ANY REPRESENTATIONS, ENDORSEMENTS, GUARANTEES, OR WARRANTIES, EXPRESS OR IMPLIED, RELATED TO THE EVALUATION BOARD INCLUDING, BUT NOT LIMITED TO, THE IMPLIED WARRANTY OF MERCHANTABILITY, TITLE, FITNESS FOR A PARTICULAR PURPOSE OR NON-INFRINGEMENT OF INTELLECTUAL PROPERTY RIGHTS. IN NO EVENT WILL ADI AND ITS LICENSORS BE LIABLE FOR ANY INCIDENTAL, SPECIAL, INDIRECT, OR CONSEQUENTIAL DAMAGES RESULTING FROM CUSTOMER'S POSSESSION OR USE OF THE EVALUATION BOARD, INCLUDING BUT NOT LIMITED TO LOST PROFITS, DELAY COSTS, LABOR COSTS OR LOSS OF GOODWILL. ADI'S TOTAL LIABILITY FROM ANY AND ALL CAUSES SHALL BE LIMITED TO THE AMOUNT OF ONE HUNDRED US DOLLARS (\$100.00). EXPORT. Customer agrees that it will not directly or indirectly export the Evaluation Board to another country, and that it will comply with all applicable United States federal laws and regulations relating to exports. GOVERNING LAW. This Agreement shall be governed by and construed in accordance with the substantive laws of the Commonwealth of Massachusetts (excluding conflict of law rules). Any legal action regarding this Agreement will be heard in the state or federal courts having jurisdiction in Suffolk County, Massachusetts, and Customer hereby submits to the personal jurisdiction and venue of such courts. The United Nations Convention on Contracts for the International Sale of Goods shall not apply to this Agreement and is expressly disclaimed.

©2019 Analog Devices, Inc. All rights reserved. Trademarks and registered trademarks are the property of their respective owners. UG20351-0-6/19(0)



www.analog.com