

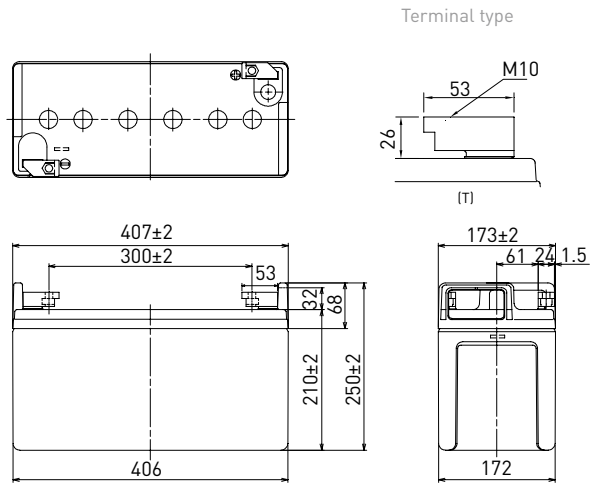
# LC-QA06210TP

FOR STANDBY POWER SUPPLIES.  
EXPECTED TRICKLE DESIGN LIFE: 15 YEARS AT 20°C.

## DIMENSIONS (MM)

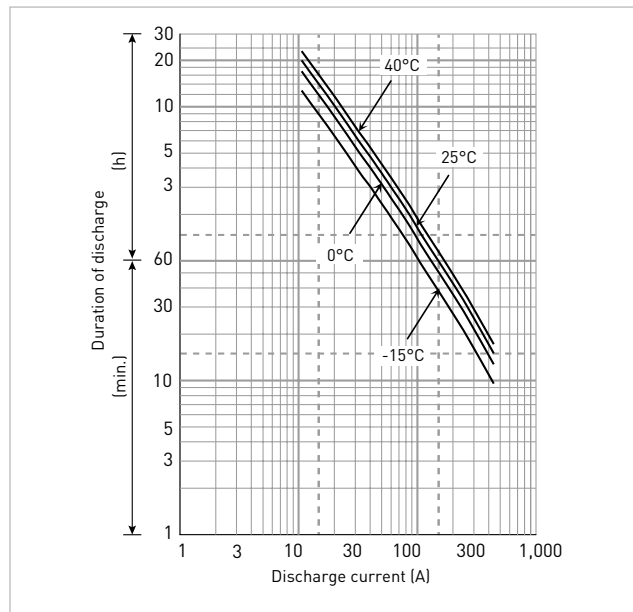


Contents indicated (including the recycle marking, etc.) are subject to change without notice. Battery case resin: flame-retardant (UL94 V-0)



Specifications		LC-QA06210TP
<b>Nominal voltage (V)</b>		6
<b>Nominal capacity</b>	<b>20 hours rate (Ah)</b>	210
<b>Dimensions</b>	<b>Length (mm)</b>	173
	<b>Width (mm)</b>	407
	<b>Total height (mm)</b>	250
<b>Approx. mass (kg)</b>		36.5
<b>Terminal type</b>		M10 T-shape
<b>Capacity (25°C)</b>	<b>20 hours rate (Ah)</b>	212
	<b>10 hours rate (Ah)</b>	202
	<b>3 hours rate (Ah)</b>	176
	<b>1 hour rate (Ah)</b>	135
<b>Impedance (mΩ)</b>	<b>Fully charged battery (25°C)</b>	1.5
	<b>Temperature dependency of capacity (%) - 20 hours rate</b>	
	40°C	102
	25°C	100
	0°C	85
	-15°C	65
<b>Remaining capacity (25°C)</b>	<b>After 3 months (%)</b>	91
	<b>After 6 months (%)</b>	82
	<b>After 12 months (%)</b>	64

## DURATION OF DISCHARGE VS. DISCHARGE CURRENT



## WATT TABLE (25°C)

(Wattage/battery)

Cut-off	15min.	20min.	30min.	45min.	1h	1.5h	2h	3h	4h	5h	6h	10h	20h
4.80V	2,220	1,816	1,349	986	769	561	467	343	274	222	191	121	61.8
4.95V	2,167	1,773	1,317	964	749	546	454	337	268	215	185	117	61.3
5.10V	2,089	1,709	1,274	954	729	531	448	331	262	209	180	115	61.1
5.25V	2,063	1,696	1,264	939	708	517	439	325	260	206	179	114	60.6
5.40V	1,966	1,687	1,223	905	698	509	428	319	254	203	177	113	59.8

## AMPERE TABLE (25°C)

(Ampere/battery)

Cut-off	15min.	20min.	30min.	45min.	1h	1.5h	2h	3h	4h	5h	6h	10h	20h
4.80V	440	364	274	200	153	107	88.1	61.5	47.6	39.5	32.3	20.5	10.6
4.95V	438	362	272	195	144	105	87.5	60.4	47.1	38.8	32.2	20.4	10.6
5.10V	436	358	268	193	140	104	86.4	60.0	46.7	38.2	32.1	20.3	10.6
5.25V	412	341	263	191	135	103	85.4	58.7	46.2	38.0	32.0	20.2	10.6
5.40V	398	333	259	165	131	92.3	81.1	57.3	45.6	37.8	31.0	20.1	10.4

All mentioned values are average values

# LC-QA06210TP

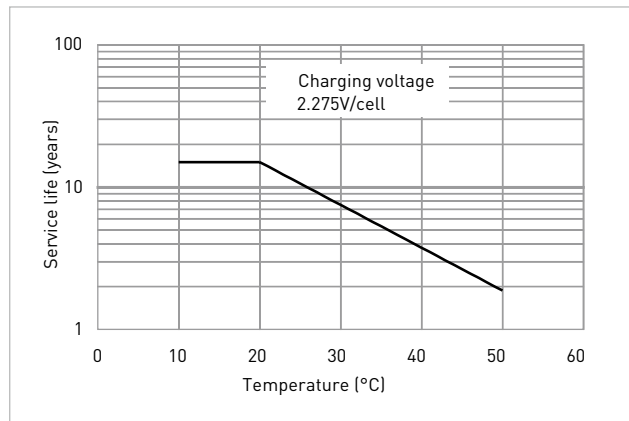
## CHARGING METHOD (25°C)

<b>Cycle use</b>	Control voltage: 6.80V - 6.90V Initial current: 31.5A or smaller
------------------	---

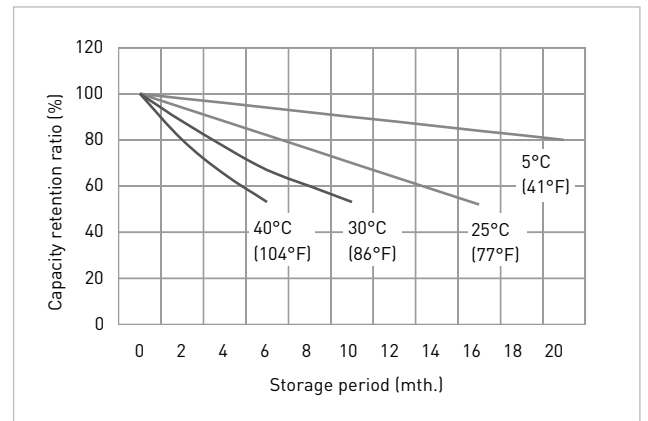
## CUT-OFF VOLTAGE

<b>Discharge current</b>	10.5A - 42.0A	42.0A - 105A	105A - 210A	210A - 420A	420A - 630A
<b>Cut-off voltage</b>	5.25V	5.10V	4.95V	4.65V	4.35V

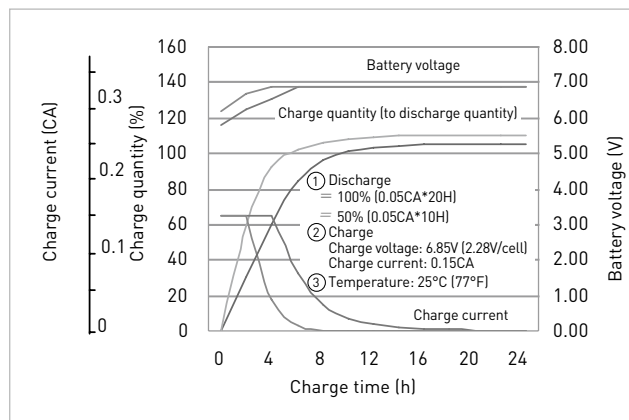
## INFLUENCE OF TEMPERATURE ON TRICKLE LIFE



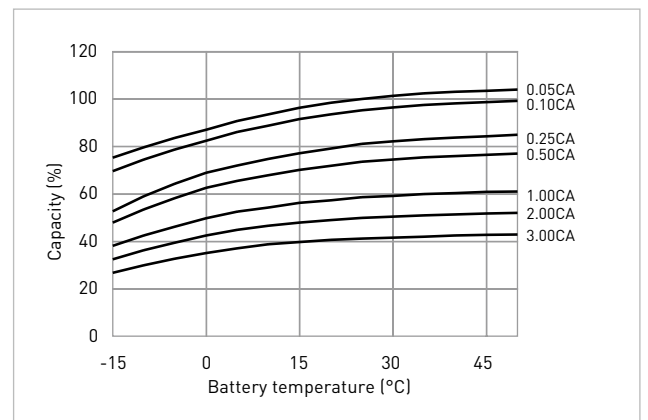
## RESIDUAL CAPACITY TEST RESULT



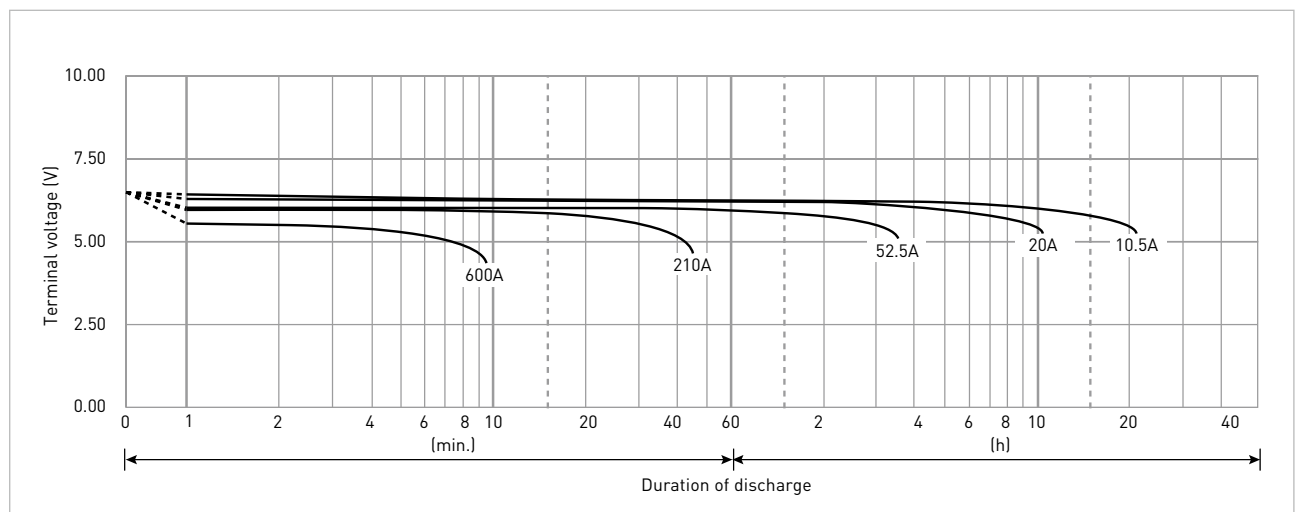
## CONSTANT-VOLTAGE CONSTANT-CURRENT CHARGE CHARACTERISTICS FOR TRICKLE USE



## DISCHARGE CAPACITY BY TEMPERATURE AND BY DISCHARGE CURRENT



## DISCHARGE CHARACTERISTICS



The data in this document are for descriptive purposes only and are not intended to make or imply any guarantee or warranty. Regarding handling and safety please consult our VRLA technical handbook chapter 'Precautions for handling VRLA batteries'.