

Ferrite Cores

EPC Series

For Power Supply and Signal Transformer
EPC Cores

CORE SHAPES AND DIMENSIONS/CHARACTERISTICS

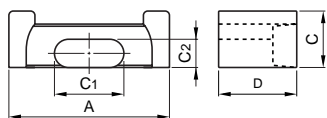


Fig.1

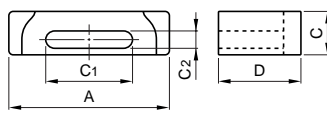


Fig.2

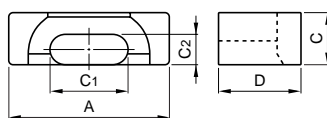


Fig.3

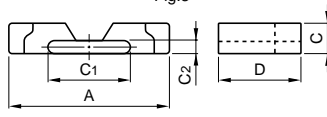
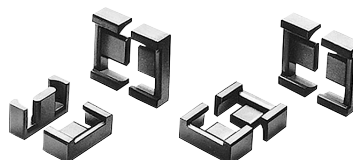


Fig.4



U.S.PAT.4,760,366
EP.PAT.245,083(DE,FR,GB,NL)
KS.UM50.836
TW.UM39,406
JP.PENDING

Type	Fig.	Dimensions (mm)					Ae (mm ²)	le (mm)	Weight (g)
		A	C	C1	C2	D			
EPC10	3	10.2±0.2	3.4±0.1	5±0.1	1.9±0.1	4.05±0.1	9.39	17.8	1.1
EPC13	1	13.25±0.3	4.6±0.15	5.6±0.15	2.05±0.1	6.6±0.2	12.5	30.6	2.1
EPC17	1	17.6±0.4	6±0.15	7.7±0.15	2.8±0.1	8.55±0.2	22.8	40.2	4.5
EPC19	1	19.1±0.4	6±0.15	8.5±0.15	2.5±0.1	9.75±0.2	22.7	46.1	5.3
EPC25	1	25.1±0.5	8±0.2	11.5±0.2	4±0.1	12.5±0.2	46.4	59.2	13
EPC25B	2	25.1±0.5	6.5±0.2	13.8±0.2	2.5±0.15	11.4±0.15	33.3	46.2	11
EPC27	1	27.1±0.5	8±0.2	13±0.3	4±0.1	16±0.2	54.6	73.1	18
EPC27N	4	27±0.4	5.1±0.1	13.85±0.15	2.2±0.1	13±0.1	33	55.9	10
EPC30	1	30.1±0.5	8±0.2	15±0.3	4±0.1	17.5±0.2	61	81.6	23

ELECTRICAL CHARACTERISTICS WITHOUT AIR GAP

Part No.	AL-value (nH/N ²)	Calculated output power*(W)
PC44EPC10-Z	1000±25% [1kHz, 0.5mA, 100Ts]	5.4[100kHz]
PC50EPC10-Z	660±25% [1kHz, 0.5mA, 100Ts]	13[500kHz]
H5C3EPC10-Z	2660min. [10kHz, 10mV, 100Ts]	
PC44EPC13-Z	870±25% [1kHz, 0.5mA, 100Ts]	8.6[100kHz]
PC50EPC13-Z	560±25% [1kHz, 0.5mA, 100Ts]	19[500kHz]
H5C3EPC13-Z	2450min. [10kHz, 10mV, 100Ts]	
PC44EPC17-Z	1150±25% [1kHz, 0.5mA, 100Ts]	20[100kHz]
PC50EPC17-Z	740±25% [1kHz, 0.5mA, 100Ts]	35[500kHz]
PC44EPC19-Z	940±25% [1kHz, 0.5mA, 100Ts]	27[100kHz]
PC50EPC19-Z	680±25% [1kHz, 0.5mA, 100Ts]	55[500kHz]
PC44EPC25-Z	1560±25% [1kHz, 0.5mA, 100Ts]	63[100kHz]
PC50EPC25-Z	1080±25% [1kHz, 0.5mA, 100Ts]	127[500kHz]
PC44EPC25B-Z	1560±25% [1kHz, 0.5mA, 100Ts]	45[100kHz]
PC50EPC25B-Z	1080±25% [1kHz, 0.5mA, 100Ts]	87[500kHz]
PC44EPC27-Z	1540±25% [1kHz, 0.5mA, 100Ts]	80[100kHz]
PC50EPC27-Z	1030±25% [1kHz, 0.5mA, 100Ts]	161[500kHz]
PC44EPC27N-Z	1400±25% [1kHz, 0.5mA, 100Ts]	43[100kHz]

* The values were obtained with forward converter mode.

WITHOUT AIR GAP

Part No.	AL-value (nH/N ²)	Calculated output power *(W)
PC44EPC30-Z	1570±25% [1kHz, 0.5mA, 100Ts]	85[100kHz]
PC50EPC30-Z	1060±25% [1kHz, 0.5mA, 100Ts]	180[500kHz]

* The values were obtained with forward converter mode.

WITH AIR GAP

Part No.	AL-value (nH/N ²)[1kHz, 0.5mA, 100Ts]
PC44EPC10AXXX*	40±7%, 63±10%
PC50EPC10AXXX	40±7%, 63±10%
PC44EPC13AXXX	40±4%, 63±5%
PC50EPC13AXXX	40±4%, 63±5%
PC44EPC17AXXX	80±4%, 125±5%
PC50EPC17AXXX	80±4%, 125±5%
PC44EPC19AXXX	80±4%, 125±5%
PC50EPC19AXXX	80±4%, 125±5%
PC44EPC25AXXX	125±5%, 200±7%
PC50EPC25AXXX	125±5%, 200±7%
PC44EPC25BAXXX	80±5%, 125±7%
PC50EPC25BAXXX	80±5%, 125±7%
PC44EPC27AXXX	125±5%, 200±7%
PC50EPC27AXXX	125±5%, 200±7%
PC44EPC27NAXXX	80±5%, 125±7%
PC44EPC30AXXX	125±5%, 200±7%
PC50EPC30AXXX	125±5%, 200±7%

* XXX: AL-value

△ Specifications which provide more details for the proper and safe use of the described product are available upon request.
All specifications are subject to change without notice.



Ferrite Cores

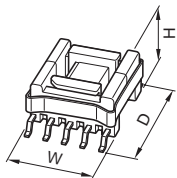
EPC Series

For Power Supply and Signal Transformer

EPC Cores

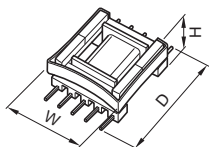
BOBBINS

SURFACE MOUNT TYPE



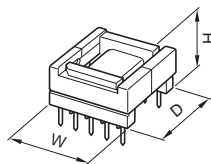
Part No.	No. of lead terminal	Dimensions (mm)			Clamp*
		W	D	H	
BEPC-10-118GA	8	11	11.7	5.2	FEPC-10-A
BEPC-13-1110GA	10	14.2	20.6	7.3	FEPC-13-A
BEPC-17-119GA	9	18.2	23.2	9.9	FEPC-17-A
BEPC-19-1110GA	10	20.2	25.2	9.9	FEPC-19-A
BEPC-25B-1111G	11	26.1	28.9	9.9	FEPC-25B-A

DROP-IN TYPE



Part No.	No. of pin terminal	Dimensions (mm)			Clamp*
		W	D	H	
BEPC-19-1110SA	10	20.2	26.2	9.8	FEPC-19-A
BEPC-25B-1111S	11	26	37.9	9.5	FEPC-25B-A

LEAD-THROUGH TYPE



Part No.	No. of pin terminal	Dimensions (mm)			Clamp*
		W	D	H	
BEPC-13-1110CPH	10	13.9	14.8	7.7	FEPC-13-A
BEPC-17-1110CPH	10	18.2	19.1	12.1	FEPC-17-A
BEPC-19-1111CPH	11	20	21.5	12.1	FEPC-19-A
BEPC-25-1111CPH	11	26.1	27	16.2	FEPC-25-A
BEPC-27-1111CPH	11	28.1	34	16.2	FEPC-27-A
BEPC-27N-1114CPH	14	29	36.5	9	FEPC-27-A
BEPC-30-1112CPH	12	31.1	37	16.2	FEPC-30-A

* Clamp material: Stainless steel

• Material: FR phenol, UL Grade: 94V-0, Pin material: Steel wire (Solder plated)