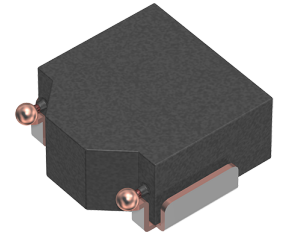


<b>Applications</b>	Commercial Grade
<b>Feature</b>	Wire Wound Magnetic Shield Metal Core
<b>Series   Type</b>	SPM
<b>Status</b>	Production (Not Recommended for New Design) Recommended Alternate Part No. : <a href="#">SPM3015T-R47M-LR</a> (Interchangeability is not guaranteed.)
<b>Brand</b>	TDK



Size	
Length(L)	3.20mm ±0.10mm
Width(W)	3.00mm ±0.10mm
Thickness   Height	1.50mm Max.
Recommended Land Pattern (A)	1.10mm Nom.
Recommended Land Pattern (B)	1.50mm Nom.
Recommended Land Pattern (C)	1.80mm Nom.

Electrical Characteristics	
Inductance	470nH ±20% at 100kHz
Rated Current (L Change) [Typ.]	8.1A (30% Down)
Rated Current (L Change) [Max.]	6.1A (30% Down)
Rated Current (Temperature Rise) [Typ.]	4.3A (40°C Rise)
Rated Current (Temperature Rise) [Max.]	
DC Resistance [Typ.]	31.4mΩ
DC Resistance [Max.]	34.5mΩ
Self Resonant Frequency [Min.]	
Self Resonant Frequency [Typ.]	
Q [Min.]	
Q [Typ.]	

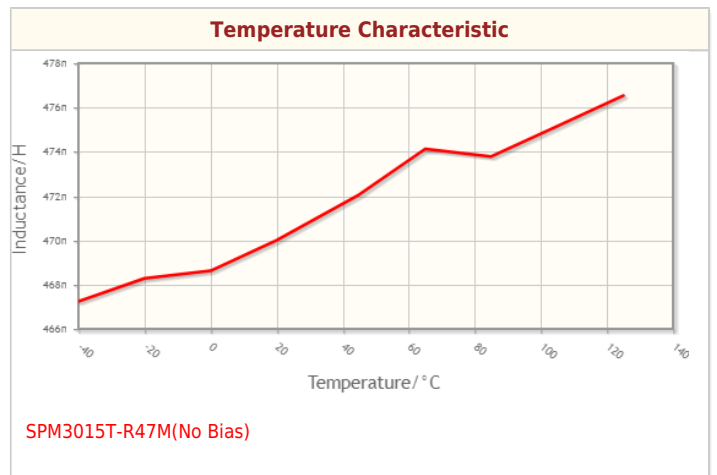
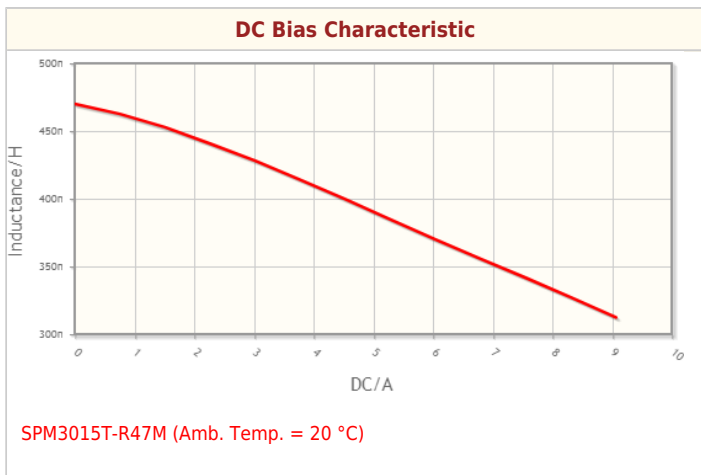
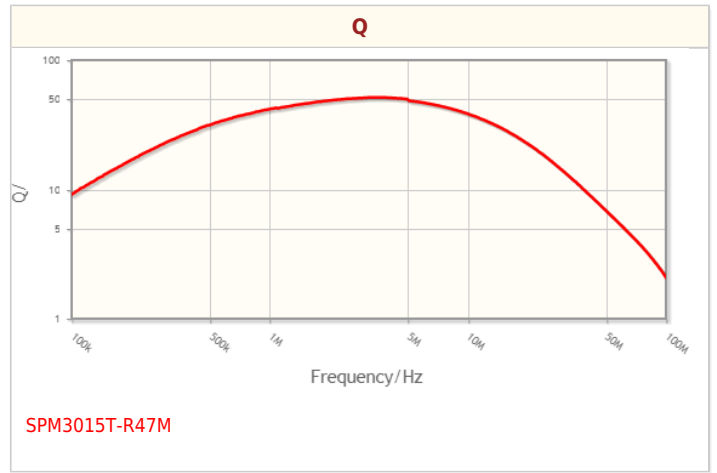
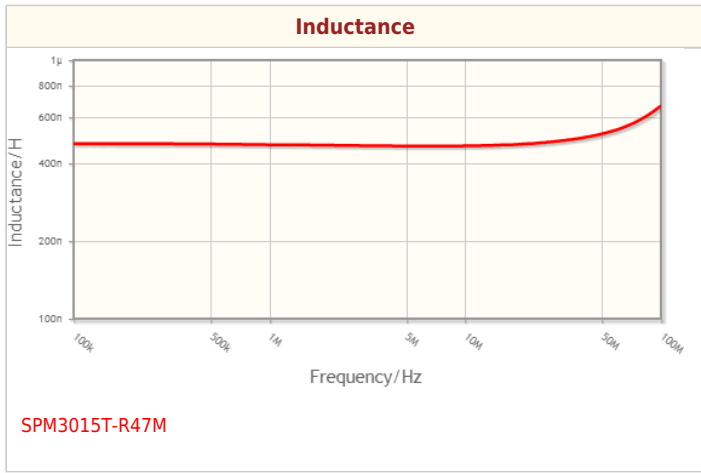
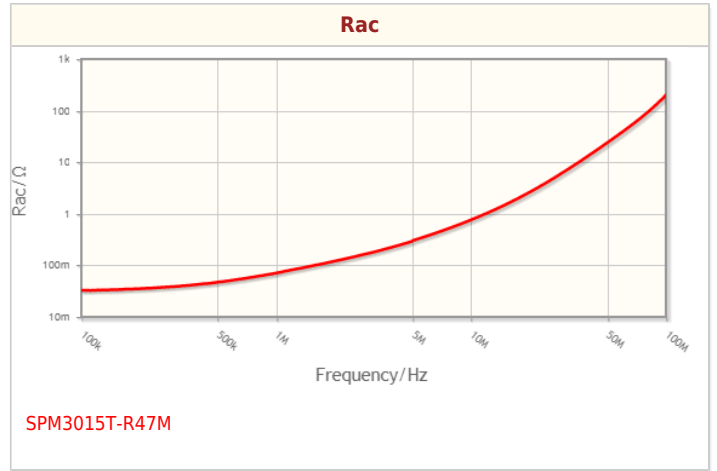
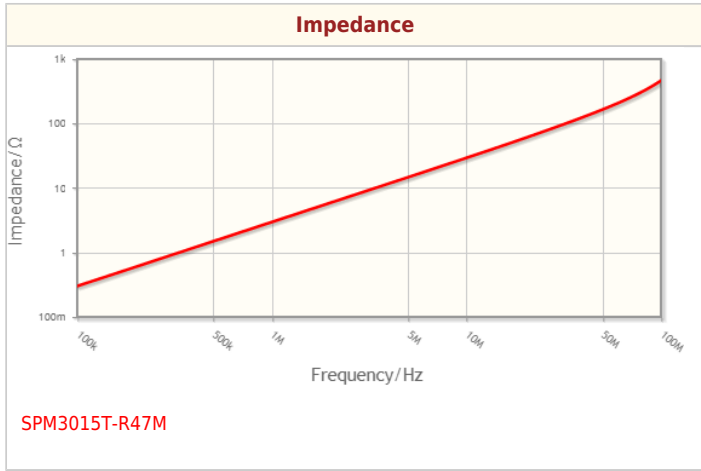
Other	
Operating Temp. Range (Including Self-Temp. Rise)	-40 to 125°C
Soldering Method	Reflow Iron Soldering
AEC-Q200	NO
Packing	Embossed (Plastic)Taping [180mm Reel, Tape width 8mm]
Package Quantity	2000pcs
Weight	0.0661g

! Images are for reference only and show exemplary products.

! This PDF document was created based on the data listed on the TDK Corporation website.

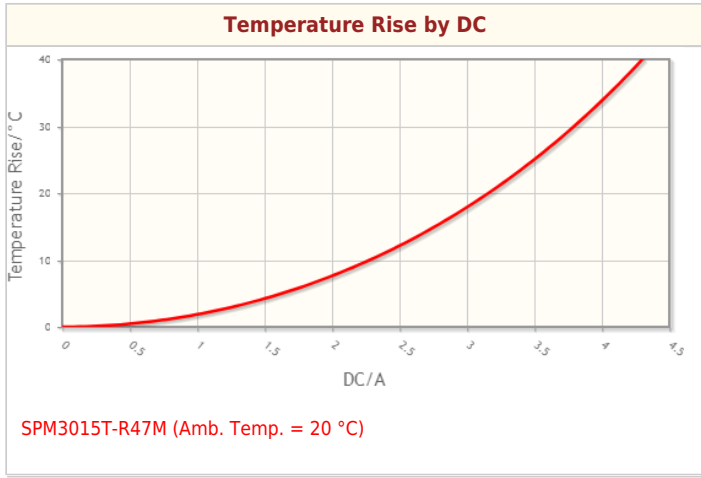
! All specifications are subject to change without notice.

Characteristic Graphs(This is reference data, and does not guarantee the products characteristics.)



! Images are for reference only and show exemplary products.  
! This PDF document was created based on the data listed on the TDK Corporation website.  
! All specifications are subject to change without notice.

Characteristic Graphs(This is reference data, and does not guarantee the products characteristics.)



! Images are for reference only and show exemplary products.  
! This PDF document was created based on the data listed on the TDK Corporation website.  
! All specifications are subject to change without notice.

## Associated Images

