



- Limited Lifetime Warranty
- 300% Peak Power Capability
- Small Package Size
- Universal Input (85 - 265VAC)
- High Efficiency

HWS300P & 600P Series

Peak Power Industrial Power Supplies

Key Market Segments & Applications

- Factory Automation
- Process Control
- Semiconductor Fabrication
- Motor and Pump Drives

HWS300P & 600P Features and Benefits

Features

- Limited Lifetime Warranty
- Peak Power Capability
- High Efficiency

Benefits

- Lower Cost of Ownership
- Lower cost, smaller size
- Easier system cooling, less power used

Specifications

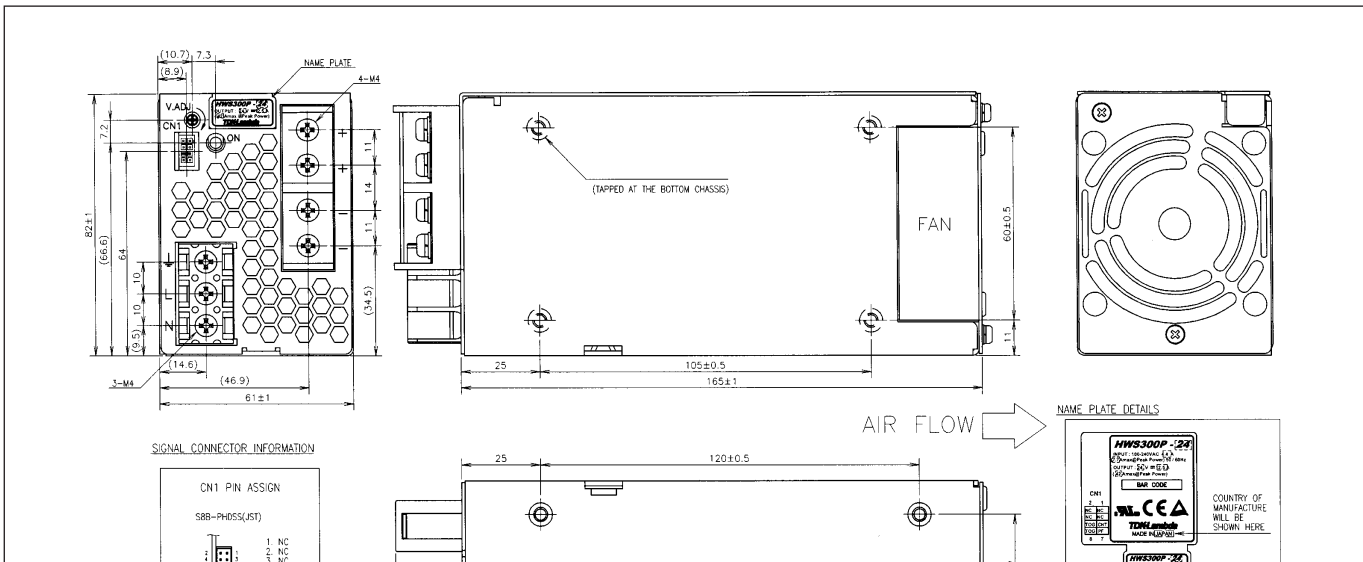
ITEMS	MODEL	HWS300P	HWS600P
Input Voltage range	-	85 - 265VAC (47 - 63Hz) or 120 - 330VDC	
Input Current (Typ)	(1) A	3.6/1.9	7.2/3.7
Inrush Current	(1) A	20 / 40	
Power Factor	-	Meets EN61000-3-2	
Temperature Coefficient	-	<0.02%/°C	
Overcurrent Protection	-	See table on page 2 (Recycle AC or remote on/off to reset)	
Overvoltage Protection	V	See table on page 2 (Recycle AC or remote on/off to reset)	
Hold Up Time (Typ)	ms	20	
Efficiency	(1) %	84 / 87	
Leakage Curr. (@240VAC, 60Hz)	mA	<0.75mA (Typically 0.2mA at 100VAC)	
Remote Sense	-	No	
Indicator	-	Green LED = ON	
Remote on/off	-	Yes	
Line Regulation	mV	24V: 96mV, 36V: 144mV, 48V: 192mV	
Load Regulation	mV	24V: 144mV, 36V: 216mV, 48V: 288mV	
Ripple & Noise	mV	24V: 150mV, 36V: 200mV, 48V: 350mV	
Parallel operation	-	No	Yes, up to 2 units
DC Good	-	Yes	
Operating Temperature	-	-10°C to +70°C, derate linearly to 50% load from 50°C to 70°C	
Storage Temperature	-	-30°C to +85°C	
Humidity (non condensing)	-	Operating: 10 - 90%RH, Non operating 10 - 95%RH	
Cooling	-	Internal fan	
Withstand Voltage	-	Input to Ground 2.5kVAC, Input to Output 3kVAC, Output to Ground 500VAC for 1 min.	
Isolation Resistance	-	>100MΩ at 25°C & 70%RH, Output to Ground 500VDC	
Vibration (non operating)	-	10 - 55Hz (1 minute sweep), 19.6m/s ² constant X, Y, Z 1 hour	
Shock	-	< 196.1 m/s ²	
Safety Agency Certification	-	IEC/EN/UL/CSA 60950-1 and 62368-1, EN50178, CE Mark	
Line Dip	-	Complies with SEMI F47 (200VAC line only)	
Conducted & Radiated EMI	-	EN55011 / EN55022, FCC VCCI Class B	
Immunity	-	IEC61000-4-2, -3, -4, -6 (Level 3), -5, -8 (Level 4), -11	
Weight (Typ)	g	1,000	1,600
Size (WxHxD)	mm	61 x 82 x 165	100 x 82 x 165
Warranty	-	Limited Lifetime Warranty	

Notes: (1) 100/200VAC

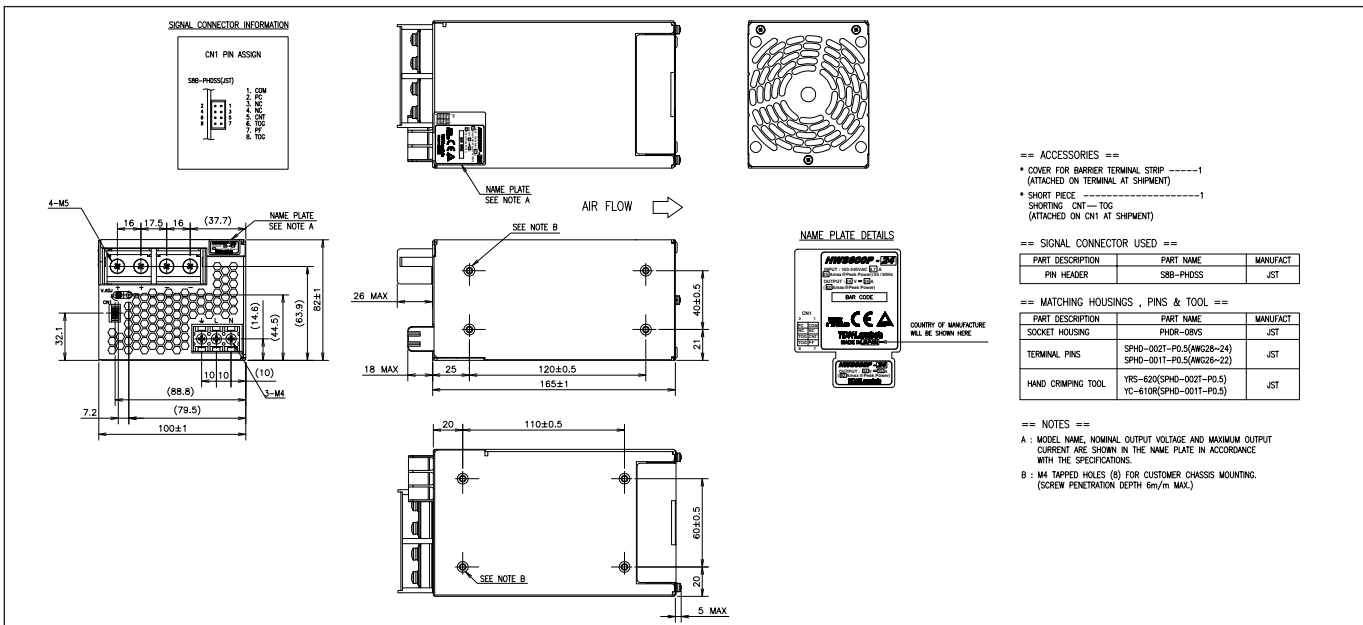
Model Selector								
Model	Voltage V	Adjust Range V	Max Avg. Current A	Max Avg. Power W	Peak Current A (1,2)	Max Peak Power W (1)	Overcurrent Minimum A	Overvoltage V
HWS300P-24	24V	19.2 - 26.4	12.5	300	21 / 42	504 / 1008	21.4 / 42.8	27.6 - 32.4
HWS600P-24	24V	19.2 - 26.4	25	600	40.5 / 83	972 / 1992	41.3 / 84.6	27.6 - 32.4
HWS300P-36	36V	28.8 - 39.6	8.4	302.4	14 / 28	504 / 1008	14.3 / 28.6	41.4 - 48.6
HWS600P-36	36V	28.8 - 39.6	16.7	601.2	27 / 55.5	972 / 1998	27.5 / 56.6	41.4 - 48.6
HWS300P-48	48V	38.4 - 52.8	6.3	302.4	10.5 / 21	504 / 1008	10.7 / 21.4	55.2 - 64.8
HWS600P-48	48V	38.4 - 52.8	12.5	600	20 / 41.5	960 / 1992	20.4 / 42.3	55.2 - 64.8

Notes
 (1) 100/200VAC
 (2) 200-265VAC Input, 5s maximum on time up to 35% duty cycle (see instruction manual)

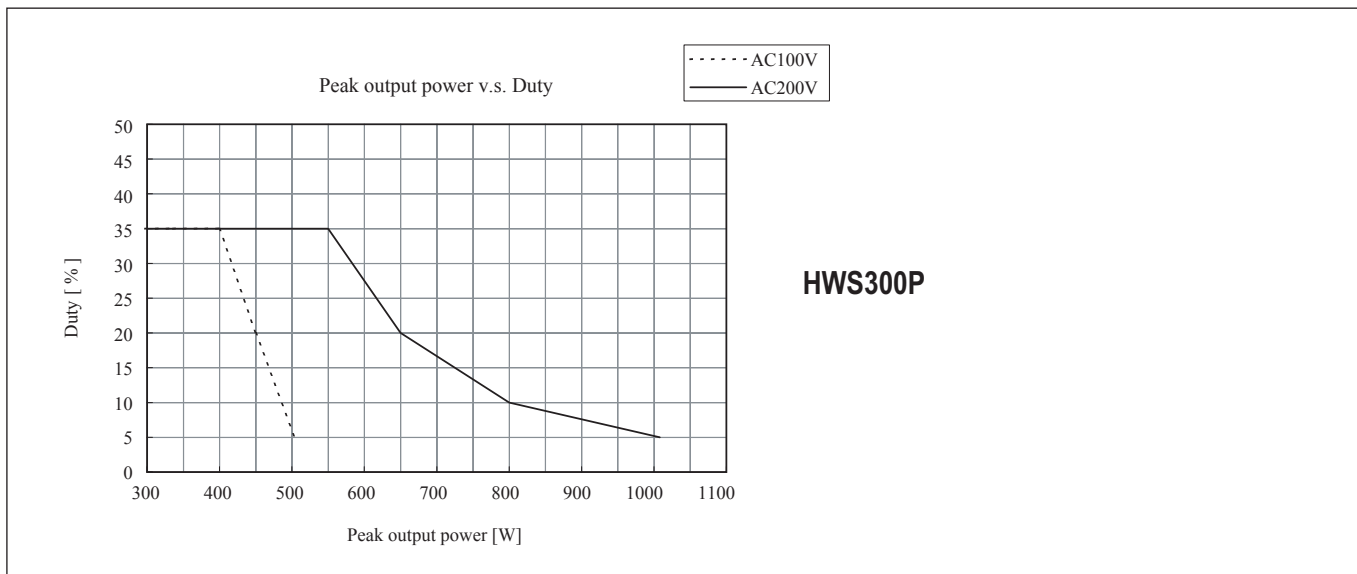
Outline Drawing HWS300P



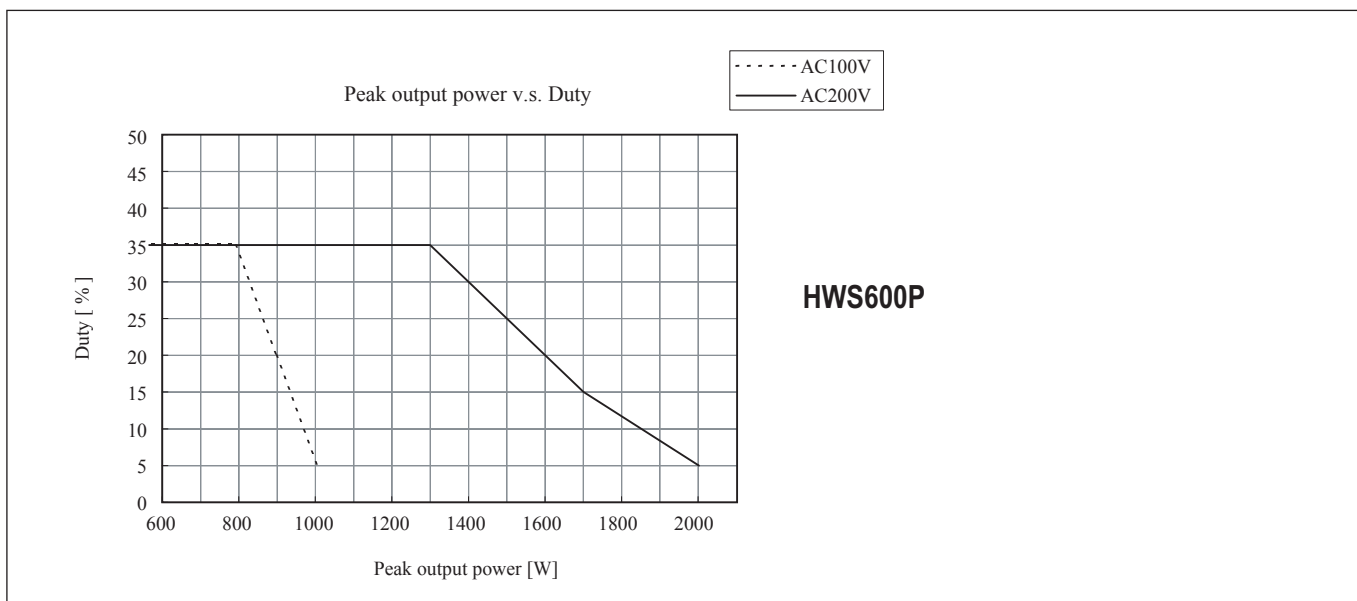
Outline Drawing HWS600P



HWS300P Peak Output Power vs. Duty Cycle



HWS600P Peak Output Power vs. Duty Cycle



Options

Suffix	Description
Blank	HWS300-1500 cover is fitted as standard
/A	Not applicable



TDK-Lambda France SAS

3 Avenue du Canada
 Parc Technopolis
 Bâtiment Sigma
 91940 les Ulis
 France
 Tel: +33 1 60 12 71 65
 Fax: +33 1 60 12 71 66
france@fr.tdk-lambda.com
www.emea.lambda.tdk.com/fr



Italy Sales Office

Via Giacomo Matteotti 62
 20092 Cinisello Balsamo (MI)
 Italy
 Tel: +39 02 61 29 38 63
 Fax: +39 02 61 29 09 00
info.italia@it.tdk-lambda.com
www.emea.lambda.tdk.com/it



Netherlands

info@nl.tdk-lambda.com
www.emea.lambda.tdk.com/nl



TDK-Lambda Germany GmbH

Karl-Bold-Strasse 40
 77855 Achern
 Germany
 Tel: +49 7841 666 0
 Fax: +49 7841 5000
info.germany@de.tdk-lambda.com
www.emea.lambda.tdk.com/de



Austria Sales Office

Aredstrasse 22
 2544 Leobersdorf
 Austria
 Tel: +43 2256 655 84
 Fax: +43 2256 645 12
info@at.tdk-lambda.com
www.emea.lambda.tdk.com/at



Switzerland Sales Office

Eichtalstrasse 55
 8634 Hombrechtikon
 Switzerland
 Tel: +41 44 850 53 53
 Fax: +41 44 850 53 50
info@ch.tdk-lambda.com
www.emea.lambda.tdk.com/ch



Nordic Sales Office

Haderslevvej 36B
 DK-6000 Kolding
 Denmark
 Tel: +45 8853 8086
info@dk.tdk-lambda.com
www.emea.lambda.tdk.com/dk



TDK-Lambda UK Ltd.

Kingsley Avenue
 Ilfracombe
 Devon EX34 8ES
 United Kingdom
 Tel: +44 (0) 12 71 85 66 66
 Fax: +44 (0) 12 71 86 48 94
powersolutions@uk.tdk-lambda.com
www.emea.lambda.tdk.com/uk



TDK-Lambda Ltd.

1 Alexander Yanai
 Segula
 Petah-Tikva
 Israel
 Tel: +9 723 902 4333
 Fax: +9 723 902 4777
info@tdk-lambda.co.il
www.emea.lambda.tdk.com/il



C.I.S.

Commercial Support:
 Tel: +7 (495) 665 2627
Technical Support:
 Tel: +7 (812) 658 0463
info@tdk-lambda.ru
www.emea.lambda.tdk.com/ru

Local Distribution

