

# Inductors

## For Power Line

### SMD

## SLF Series SLF12575 Type

### FEATURES

- The SLF series are characterized by low profile, low DC resistance, and high current handling capacities.
- Because they are magnetically shielded, these parts can be used in high-density mounting configurations.
- Flat bottom surface ensures secure, reliable mounting.
- Provided in embossed carrier tape packaging for use with automatic mounting machines.

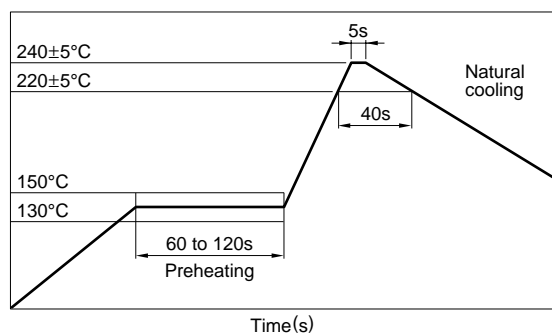
### APPLICATIONS

Portable telephones, personal computers, hard disk drives, and other electronic equipment.

### SPECIFICATIONS

Type	Operating temperature range [Including self-temperature rise]	Storage temperature range [Unit of products]
SLF6025	-20 to +85°C	-40 to +85°C
SLF6028	-20 to +85°C	-40 to +85°C
SLF7028	-20 to +85°C	-40 to +85°C
SLF7030	-20 to +85°C	-40 to +85°C
SLF7032	-20 to +85°C	-40 to +85°C
SLF7045	-20 to +85°C	-40 to +85°C
SLF10145	-20 to +90°C	-40 to +90°C
SLF12555	-20 to +90°C	-40 to +90°C
SLF12565	-20 to +105°C	-40 to +105°C
SLF12575	-20 to +105°C	-40 to +105°C

### RECOMMENDED REFLOW SOLDERING CONDITIONS



### PRODUCT IDENTIFICATION

SLF	7032	T-	220	M	R96	-2
(1)	(2)	(3)	(4)	(5)	(6)	(7)

(1) Series name

(2) Dimensions L×W×T

6025	6.0×6.0×2.5mm
6028	6.0×6.0×2.8mm
7028	7.0×7.0×2.8mm
7030	7.0×7.0×3.0mm
7032	7.0×7.0×3.2mm
7045	7.0×7.0×4.5mm
10145	10.1×10.1×4.5mm
12555	12.5×12.5×5.5mm
12565	12.5×12.5×6.5mm
12575	12.5×12.5×7.5mm

(3) Packaging style

T	Taping(reel)
---	--------------

(4) Inductance value

3R3	3.3μH
100	10μH

(5) Inductance tolerance

M	±20%
N	±30%

(6) Rated current

1R9	1.9A
R96	0.96A

(7) TDK internal code

(Some products may not have this number. See the main body for details.)

### PACKAGING STYLE AND QUANTITIES

Packaging style	Type	Quantity
Taping	SLF6025T	1000 pieces/reel
	SLF6028T	1000 pieces/reel
	SLF7028T	1000 pieces/reel
	SLF7030T	1000 pieces/reel
	SLF7032T	1000 pieces/reel
	SLF7045T	1000 pieces/reel
	SLF10145T	500 pieces/reel
	SLF12555T	500 pieces/reel
	SLF12565T	500 pieces/reel
	SLF12575T	500 pieces/reel

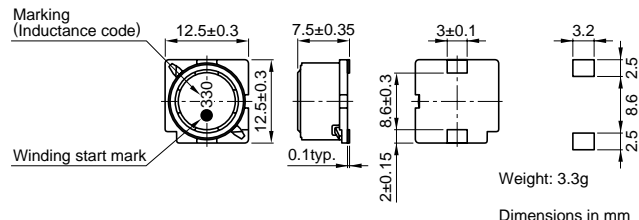
# Inductors

## For Power Line

### SMD

## SLF Series SLF12575 Type

### SHAPES AND DIMENSIONS/RECOMMENDED PC BOARD PATTERN



### ELECTRICAL CHARACTERISTICS

Inductance ( $\mu\text{H}$ )	Inductance tolerance (%)	Test frequency L (kHz)	DC resistance ( $\Omega$ ) $\pm 20\%$	Rated current (A)* max.		Part No.
				Based on inductance change	Based on temperature rise	
1.2	$\pm 30$	1	0.0069	13	8.2	SLF12575T-1R2N8R2
2.7	$\pm 30$	1	0.0094	10	7	SLF12575T-2R7N7R0
3.9	$\pm 30$	1	0.0104	9	6.7	SLF12575T-3R9N6R7
5.6	$\pm 30$	1	0.0116	7.8	6.3	SLF12575T-5R6N6R3
6.8	$\pm 30$	1	0.0131	7.2	5.9	SLF12575T-6R8N5R9
10	$\pm 20$	1	0.0156	5.5	5.4	SLF12575T-100M5R4
15	$\pm 20$	1	0.0184	4.7	5	SLF12575T-150M4R7
22	$\pm 20$	1	0.0263	4	4	SLF12575T-220M4R0
33	$\pm 20$	1	0.0395	3.2	3.4	SLF12575T-330M3R2
47	$\pm 20$	1	0.0528	2.7	3	SLF12575T-470M2R7
68	$\pm 20$	1	0.0778	2	2.4	SLF12575T-680M2R0
100	$\pm 20$	1	0.125	1.9	1.9	SLF12575T-101M1R9
150	$\pm 20$	1	0.175	1.5	1.6	SLF12575T-151M1R5
220	$\pm 20$	1	0.258	1.3	1.3	SLF12575T-221M1R3

\* Rated current: Value obtained when current flows and the temperature has risen to 40°C or when DC current flows and the initial value of inductance has fallen by 10%, whichever is smaller.

- Test equipment L: YHP 4194A IMPEDANCE GAIN/PHASE ANALYZER, or equivalent (Measured at 1kHz/0.5V)  
Rdc: MATSUSHITA VP-2941A DIGITAL MILLIOHM METER, or equivalent

### TYPICAL ELECTRICAL CHARACTERISTICS

#### INDUCTANCE CHANGE vs. DC SUPERPOSITION CHARACTERISTICS

