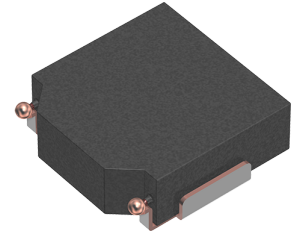


Applications	Commercial Grade
Feature	<div style="border: 1px solid red; padding: 2px; display: inline-block;">Wire Wound</div> Wire Wound <div style="border: 1px solid green; padding: 2px; display: inline-block;">Shield</div> Magnetic Shield <div style="border: 1px solid gray; padding: 2px; display: inline-block;">Metal Core</div> Metal Core
Series Type	SPM
Status	EOL announced Recommended Alternate Part No. : SPM4015T-2R2M-LR (Interchangeability is not guaranteed.) Discontinue Issue Date : Jun.3, 2022 Last Purchase Order Date : Sep.30, 2023 Last Shipment Date : Mar.31, 2024
Brand	TDK



Size	
Length(L)	4.40mm ±0.20mm
Width(W)	4.10mm ±0.20mm
Thickness Height	1.50mm Max.
Recommended Land Pattern (A)	1.65mm Nom.
Recommended Land Pattern (B)	1.65mm Nom.
Recommended Land Pattern (C)	2.30mm Nom.

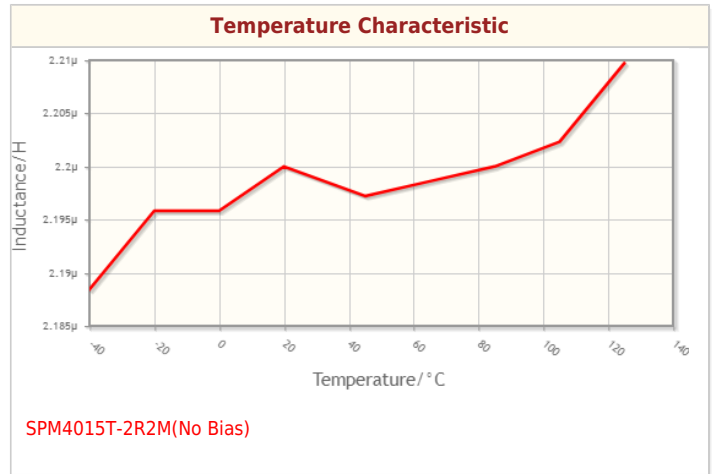
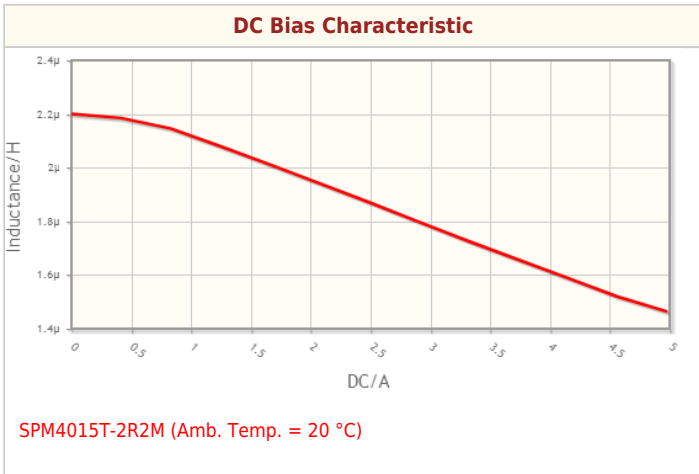
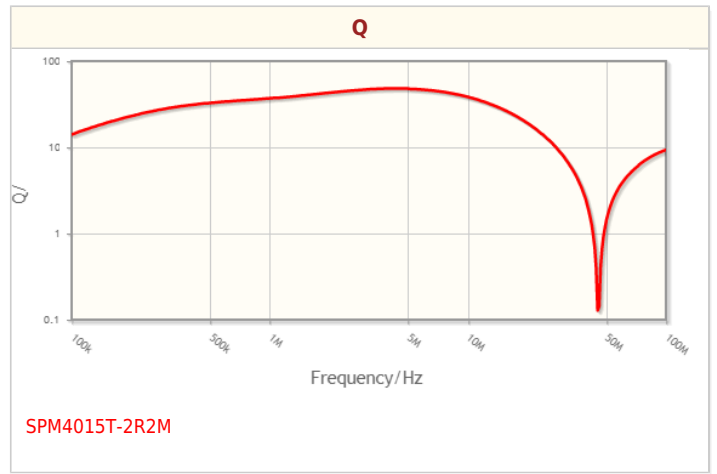
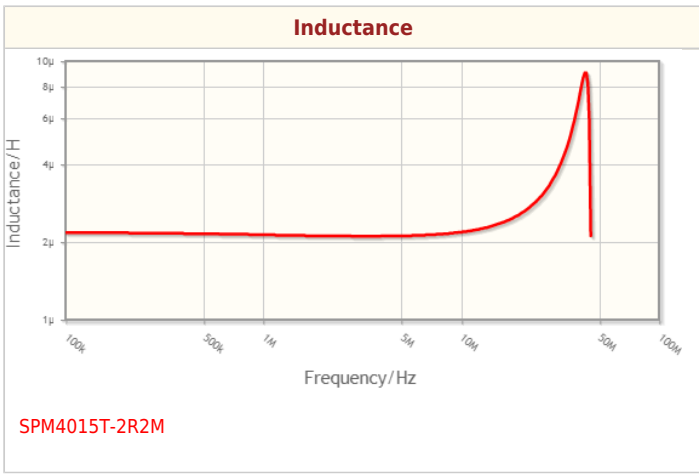
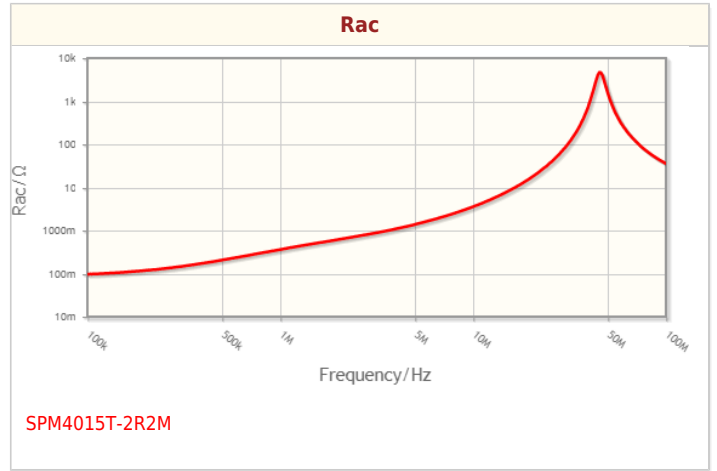
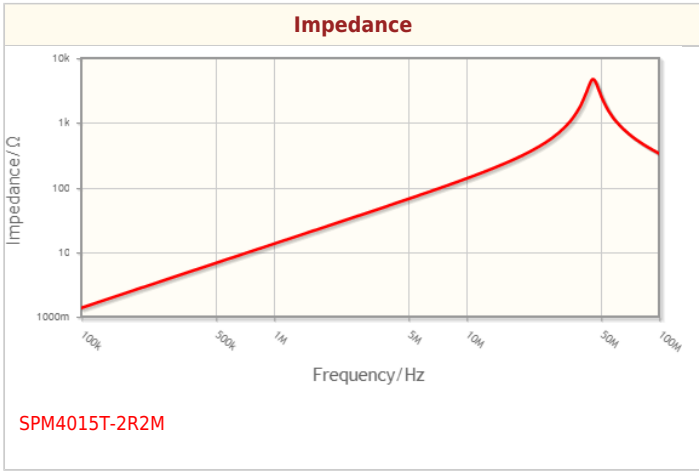
Electrical Characteristics	
Inductance	2.2µH ±20% at 100kHz
Rated Current (L Change) [Typ.]	5.5A (30% Down)
Rated Current (L Change) [Max.]	4.1A (30% Down)
Rated Current (Temperature Rise) [Typ.]	3.1A (40°C Rise)
Rated Current (Temperature Rise) [Max.]	
DC Resistance [Typ.]	64.5mΩ
DC Resistance [Max.]	71mΩ
Self Resonant Frequency [Min.]	
Self Resonant Frequency [Typ.]	
Q [Min.]	
Q [Typ.]	

Other	
Operating Temp. Range (Including Self-Temp. Rise)	-40 to 125°C
Soldering Method	Reflow
	Iron Soldering
AEC-Q200	NO
Packing	Embossed (Plastic)Taping [180mm Reel, Tape width 12mm]

! Images are for reference only and show exemplary products.
 ! This PDF document was created based on the data listed on the TDK Corporation website.
 ! All specifications are subject to change without notice.

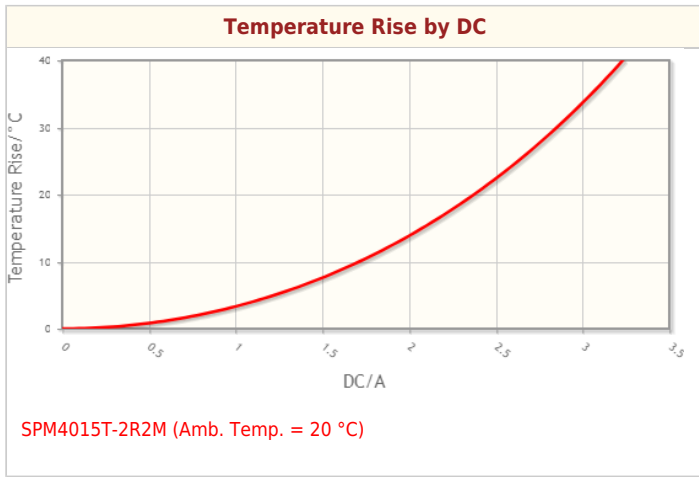
Package Quantity	1000pcs
Weight	0.1224g

Characteristic Graphs(This is reference data, and does not guarantee the products characteristics.)



! Images are for reference only and show exemplary products.
! This PDF document was created based on the data listed on the TDK Corporation website.
! All specifications are subject to change without notice.

Characteristic Graphs(This is reference data, and does not guarantee the products characteristics.)



Associated Images

