

# Inductors

## For Power Line SMD

## SLF Series SLF7032 Type

### FEATURES

- The SLF series are characterized by low profile, low DC resistance, and high current handling capacities.
- Because they are magnetically shielded, these parts can be used in high-density mounting configurations.
- Flat bottom surface ensures secure, reliable mounting.
- Provided in embossed carrier tape packaging for use with automatic mounting machines.

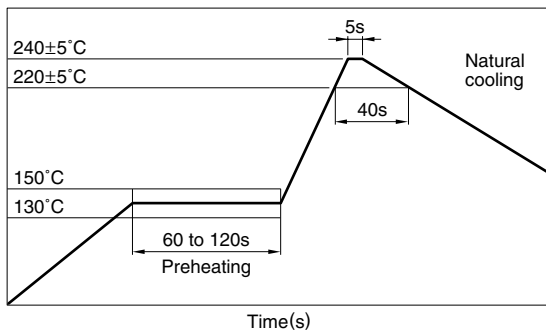
### APPLICATIONS

Portable telephones, personal computers, hard disk drives, and other electronic equipment.

### SPECIFICATIONS

|                             |   |
|-----------------------------|---|
| Operating temperature range | -20 to +85°C<br>[Including self-temperature rise] |
| Storage temperature range   | -40 to +85°C[Unit of products]                    |

### RECOMMENDED REFLOW SOLDERING CONDITIONS



### PRODUCT IDENTIFICATION

|     |      |     |     |     |     |     |
|-----|------|-----|-----|-----|-----|-----|
| SLF | 7032 | T-  | 220 | M   | R96 | -2  |
| (1) | (2)  | (3) | (4) | (5) | (6) | (7) |

(1) Series name

(2) Dimensions L×W×T

|      |               |
|------|---------------|
| 7032 | 7.0×7.0×3.2mm |
|------|---------------|

(3) Packaging style

|   |              |
|---|--------------|
| T | Taping(reel) |
|---|--------------|

(4) Inductance value

|     |       |
|-----|-------|
| 3R3 | 3.3μH |
| 100 | 10μH  |

(5) Inductance tolerance

|   |      |
|---|------|
| M | ±20% |
|---|------|

(6) Rated current

|     |       |
|-----|-------|
| 1R9 | 1.9A  |
| R96 | 0.96A |

(7) TDK internal code

(Some products may not have this number. See the main body for details.)

### PACKAGING STYLE AND QUANTITIES

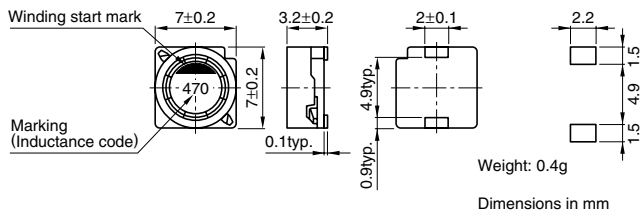
|                 |                  |
|-----------------|------------------|
| Packaging style | Quantity         |
| Taping          | 1000 pieces/reel |

# Inductors

## SLF Series SLF7032 Type

For Power Line  
SMD

### SHAPES AND DIMENSIONS/RECOMMENDED PC BOARD PATTERN



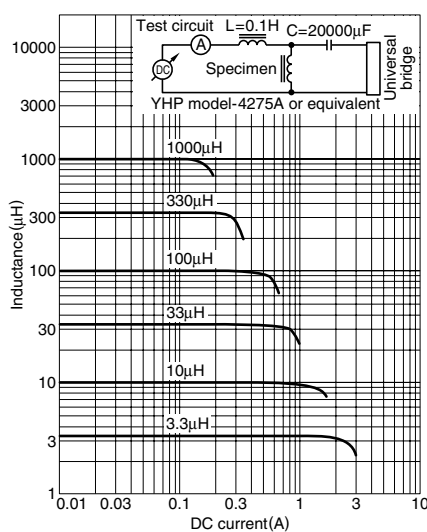
### ELECTRICAL CHARACTERISTICS

| Inductance<br>( $\mu\text{H}$ ) | Inductance tolerance<br>(%) | Test frequency<br>L (kHz) | DC resistance<br>( $\Omega$ ) $\pm 20\%$ | Rated current<br>(A) max. | Part No.           |
|---------------------------------|-----------------------------|---------------------------|--|---------------------------|--------------------|
| 3.3                             | $\pm 20$                    | 1                         | 0.023                                    | 1.9                       | SLF7032T-3R3M1R9-2 |
| 4.7                             | $\pm 20$                    | 1                         | 0.036                                    | 1.7                       | SLF7032T-4R7M1R7-2 |
| 6.8                             | $\pm 20$                    | 1                         | 0.041                                    | 1.6                       | SLF7032T-6R8M1R6-2 |
| 10                              | $\pm 20$                    | 1                         | 0.053                                    | 1.4                       | SLF7032T-100M1R4-2 |
| 15                              | $\pm 20$                    | 1                         | 0.075                                    | 1.1                       | SLF7032T-150M1R1-2 |
| 22                              | $\pm 20$                    | 1                         | 0.11                                     | 0.96                      | SLF7032T-220MR96-2 |
| 33                              | $\pm 20$                    | 1                         | 0.16                                     | 0.75                      | SLF7032T-330MR75-2 |
| 47                              | $\pm 20$                    | 1                         | 0.24                                     | 0.67                      | SLF7032T-470MR67-2 |
| 68                              | $\pm 20$                    | 1                         | 0.31                                     | 0.59                      | SLF7032T-680MR59-2 |
| 100                             | $\pm 20$                    | 1                         | 0.45                                     | 0.45                      | SLF7032T-101MR45-2 |
| 150                             | $\pm 20$                    | 1                         | 0.65                                     | 0.37                      | SLF7032T-151MR37-2 |
| 220                             | $\pm 20$                    | 1                         | 1.05                                     | 0.29                      | SLF7032T-221MR29-2 |
| 330                             | $\pm 20$                    | 1                         | 1.67                                     | 0.22                      | SLF7032T-331MR22-2 |
| 470                             | $\pm 20$                    | 1                         | 2.05                                     | 0.2                       | SLF7032T-471MR20-2 |
| 680                             | $\pm 20$                    | 1                         | 3.15                                     | 0.16                      | SLF7032T-681MR16-2 |
| 1000                            | $\pm 20$                    | 1                         | 4.78                                     | 0.13                      | SLF7032T-102MR13-2 |

- Test equipment L:YHP 4194A IMPEDANCE GAIN/PHASE ANALYZER, or equivalent (Measured at 1kHz/0.5V)  
Rdc:MATSUSHITA,VP-2941A DIGITAL MILLIOHM METER, or equivalent

### TYPICAL ELECTRICAL CHARACTERISTICS

#### INDUCTANCE CHANGE vs. DC SUPERPOSITION CHARACTERISTICS



- All specifications are subject to change without notice.