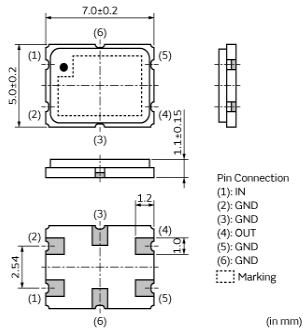
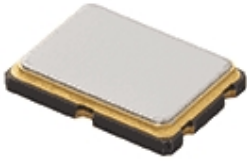


# XDCAF21M700MAA00P0



## Appearance & Shape



## Features

Murata's Crystal Filter with original thin wafer design technology based on long experience and activity realizes high reliability and is widely used in various applications such as business radio.

## Applications

Other Usage	Industrial
-------------	------------

## Packaging Information

Packaging	Specifications	Standard Packing Quantity
P0	330mm Plastic Tape	3000

**Attention**  
 1.This datasheet is downloaded from the website of Murata Manufacturing Co., Ltd. Therefore, it's specifications are subject to change or our products in it may be discontinued without advance notice. Please check with our sales representatives or product engineers before ordering.  
 2.This datasheet has only typical specifications because there is no space for detailed specifications.  
 Therefore, please review our product specifications or consult the approval sheet for product specifications before ordering.

# XDCAF21M700MAA00P0

## Specifications

Center Frequency	21.7000MHz
Operating Temperature Range	-20°C to 70°C
Number of Pole	2
3dB Bandwidth	±3.75kHzmin.
Insertion Loss(max.)	2dB
Ripple(max.)	1dB
Stop Bandwidth	20kHzmax.
Area of Stop Bandwidth	[18dB]
Stop Band Attenuation(min.)	70dB
Spurious Attenuation(min.)	18dB
Termination Impedance	1050ohm // 6.0pF
Mass	125.65mg

### Attention

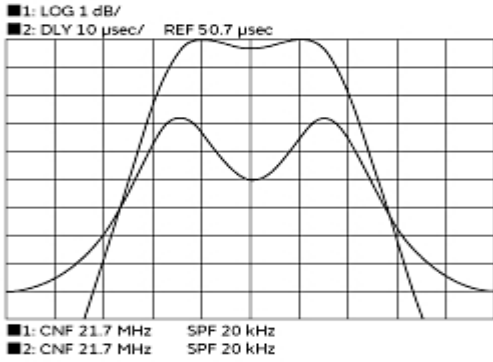
1.This datasheet is downloaded from the website of Murata Manufacturing Co., Ltd. Therefore, it's specifications are subject to change or our products in it may be discontinued without advance notice. Please check with our sales representatives or product engineers before ordering.

2.This datasheet has only typical specifications because there is no space for detailed specifications.

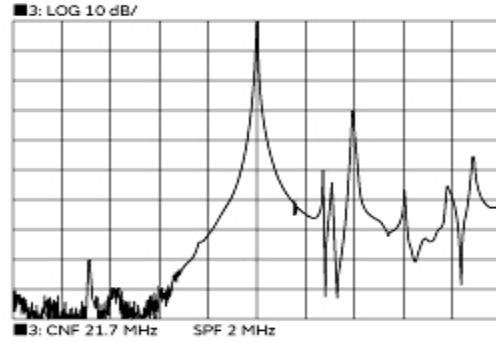
Therefore, please review our product specifications or consult the approval sheet for product specifications before ordering.

# XDCAF21M700MAA00P0

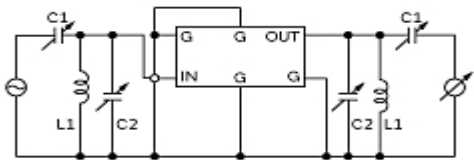
## Product Data



Frequency Characteristics



Spurious Response



Terminating impedance: 1500Ω//2.5pF

Measurement Circuit

**Attention**

- 1.This datasheet is downloaded from the website of Murata Manufacturing Co., Ltd. Therefore, it's specifications are subject to change or our products in it may be discontinued without advance notice. Please check with our sales representatives or product engineers before ordering.
- 2.This datasheet has only typical specifications because there is no space for detailed specifications. Therefore, please review our product specifications or consult the approval sheet for product specifications before ordering.