

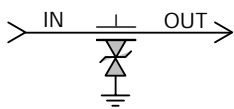
TransFeed 0805 Surface Mount Chip

AVX-TVS Protection and EMI Suppression

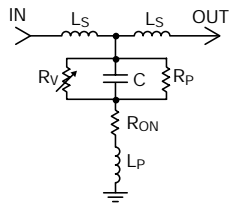
Within a Single SMT Component



Schematic Diagram



Electrical Model



HOW TO ORDER

V 2 F 1 05 A 150 Y 2 E D

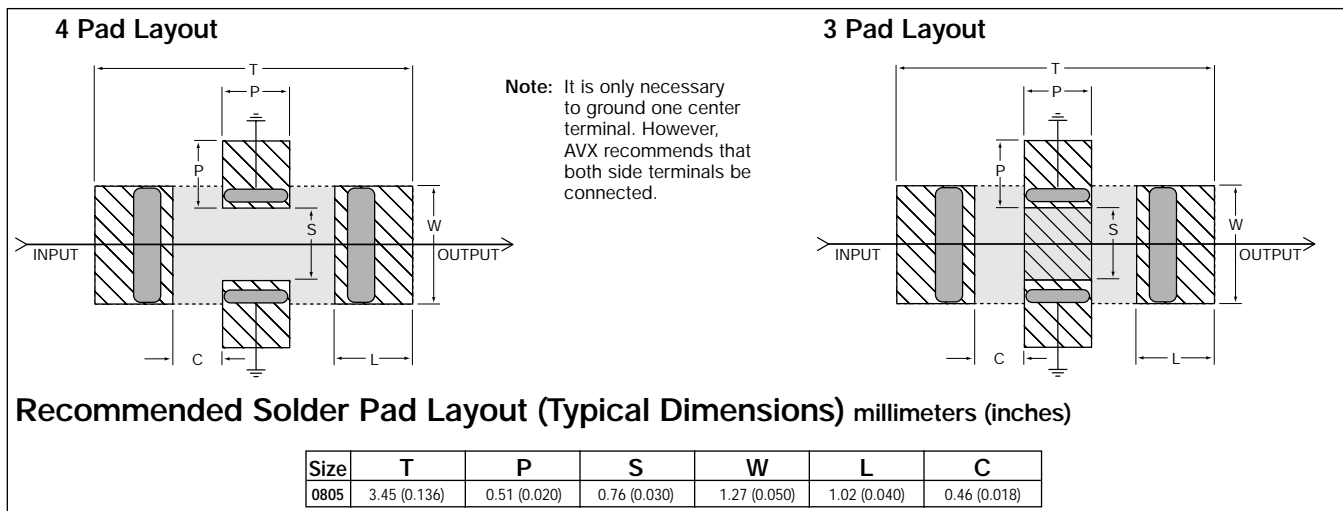
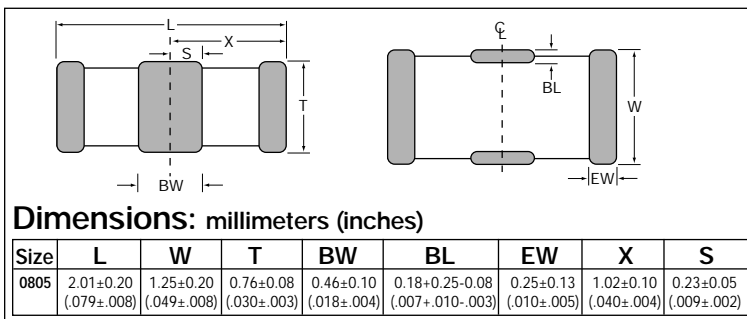
① ② ③ ④ ⑤ ⑥ ⑦ ⑧ ⑨ ⑩ ⑪

- ① Varistor
- ② Chip Size: 2=0805
- ③ Feedthru Capacitor
- ④ Number of Elements
- ⑤ Voltage: 05=5.6V 14=14V
09=9.0V 18=18V
- ⑥ Energy Rating: X=0.05J
A=0.1J
C=0.3J
- ⑦ Varistor Clamping Voltage:
150=15.5V 500=50.0V
200=20.0V 400=40.0V
300=30.0V
- ⑧ Capacitance Tolerance:
8=+50/-20% Y=+100/-50%
- ⑨ DC Resistance:
1=.150 Ohms 4=.300 Ohms
2=.200 Ohms 6=.600 Ohms
3=.250 Ohms
- ⑩ Feedthru Current:
D=500 mA, E=750 mA, F=1.0 Amp
- ⑪ Packaging Code (Pcs/Reel):
D=1,000
R=4,000
T=10,000

TransFeed Electrical Specifications

Part Number	Vwm	Vb	Vc 8x20µS @ 2A	Ip 8x20µS	II	Et	Cap 1MHz	DCR Ohms	Feedthru Current
V2F105A150Y2E	5.6	7.6 - 9.3	15.5	30	<50 µA	0.1	800	0.200	750 mA
V2F109A200Y2E	9.0	11.0 - 14.0	20.0	30	<40 µA	0.1	575	0.200	750 mA
V2F114A300Y2E	14.0	16.5 - 20.3	30.0	30	<30 µA	0.1	300	0.200	750 mA
V2F118A400Y2E	18.0	22.9 - 28.0	40.0	30	<25 µA	0.1	200	0.200	750 mA
V2F118X500Y3D	<18.0	N/A	<50.0*	20	<10 µA	0.05	<100	0.250	500 mA
V2F105C150Y1F	5.6	7.1 - 8.7	15.5	120	<50 µA	0.3	2500	0.150	1 Amp
V2F109C200Y1F	9.0	10.5 - 13.5	20.0	120	<40 µA	0.3	1800	0.150	1 Amp
V2F114C300Y1F	14.0	15.9 - 19.4	30.0	120	<30 µA	0.3	900	0.150	1 Amp
V2F118C400Y1F	18.0	22.5 - 27.5	40.0	120	<25 µA	0.3	500	0.150	1 Amp

*Vc at 8x20µS @ 1A



Additional information on this product is available from AVX's catalog or AVX's FAX Service. Call 1-800-879-1613 and request document #106. Visit our website <http://www.avxcorp.com>

