

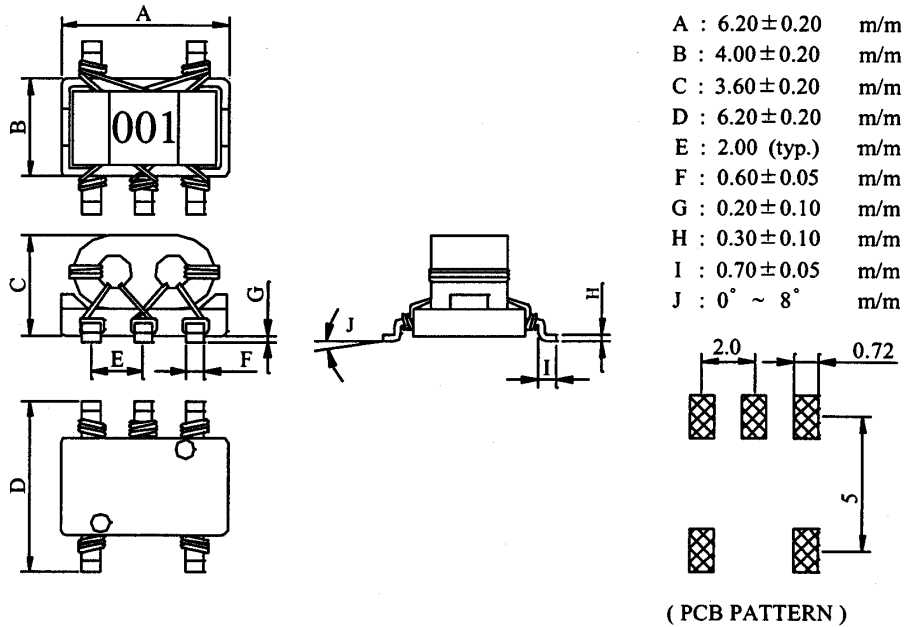
# SPECIFICATION FOR APPROVAL

REF :

PAGE: 1

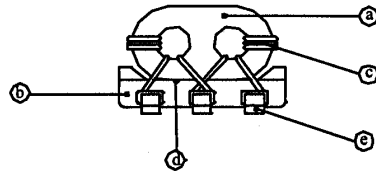
PROD. NAME	SMD BALUN TRANSFORMER	DWG NO.	BRN6036 Series
		ITEM NO.	

## I . MECHANICAL DIMENSIONS :



## II . MATERIALS :

- a. CORE : FERRITE RING CORE
- b. BASE : PHENOLIC
- c. WIRE : ENAMELLED COPPER WIRE
- d. ADHESIVE : EPOXY RESIN
- e. TERMINAL : TINNED COPPER PLATE



## III . FEATURES :

- a. PAIRED WIRE COIL FOR HIGH STABILITY.
- b. BASE PIN TERMINAL TREATED, ALLOWING MOUNTING 'AS IS' ON A PCB.

## IV . APPLICATIONS :

- a. DOUBLE BALANCE MIXERS, BROAD-BAND TRANSFORMERS, IMPEDANCE TRANSFORMERS, ETC.

AE-001A

**Bourns Inductive Solution**

# SPECIFICATION FOR APPROVAL

REF :

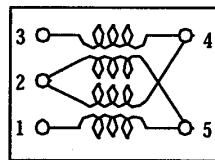
PAGE: 2

PROD. NAME	SMD BALUN TRANSFORMER	DWG NO.	BRN6036 Series
		ITEM NO.	

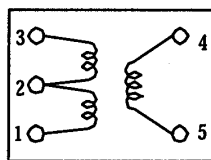
**V . ELECTRICAL CHARACTERISTICS :**

DWG NO.	WINDING TURNS	OPERATING FREQUENCY RANGE	INSERTION LOSS	PIN CONNECTION FIG.
BRN6036-0001S	2.0	30.0MHz- 850MHz	3.0dB max.	1
BRN6036-0002S	3.0	5.0MHz-1000MHz	3.0dB max.	1
BRN6036-0003S	4.0	9.0MHz-1700MHz	3.0dB max.	1
BRN6036-0004S	5.0	5.5MHz-1500MHz	3.0dB max.	1
BRN6036-0005S	1.0	20.0MHz- 400MHz	3.0dB max.	2
BRN6036-0006S	2.0	8.0MHz- 550MHz	3.0dB max.	2
BRN6036-0007S	3.0	3.5MHz-500MHz	3.0dB max.	2
BRN6036-0008S	4.0	2.0MHz-370MHz	3.0dB max.	2
BRN6036-0009S	1.0	100.0MHz- 500MHz	3.0dB max.	2
BRN6036-0010S	2.0	500.0MHz-850MHz	3.0dB max.	2
BRN6036-0011S	3.0	240.0MHz-500MHz	3.0dB max.	2
BRN6036-0012S	4.0	85.0MHz-380MHz	3.0dB max.	2
BRN6036-0013S	1.5	5.5MHz-850MHz	3.0dB max.	3
BRN6036-0014S	2.5	2.5MHz-2000MHz	3.0dB max.	3
BRN6036-0015S	3.5	1.2MHz-1700MHz	3.0dB max.	3
BRN6036-0016S	4.5	0.8MHz-1400MHz	3.0dB max.	3
BRN6036-0017S	5.5	0.6MHz-1300MHz	3.0dB max.	3
BRN6036-0018S	1.5	160.0MHz-2200MHz	3.0dB max.	4
BRN6036-0019S	2.5	55.0MHz-1700MHz	3.0dB max.	4
BRN6036-0020S	3.5	30.0MHz-1400MHz	3.0dB max.	4

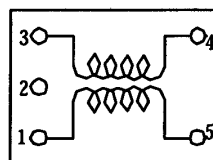
**VI . SCHEMATIC DIAGRAM :**



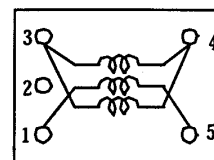
Double balanced  
Fig.1



Transformer  
Fig.2



Transformer  
Fig.3



Transformer  
Fig.4

AE-001A

**Bourns Inductive Solution**

# SPECIFICATION FOR APPROVAL

REF :

PAGE: 3

<b>PROD. NAME</b>	<b>SMD BALUN TRANSFORMER</b>	<b>DWG NO.</b>	<b>BRN6036 Series</b>
		<b>ITEM NO.</b>	

**VII . PACKAGING INFORMATION :**  
**(1) CONFIGURATION**

**(2) DIMENSIONS** Unit:m/m

STYLE	A	B	C	D	G	N	T
07 - 16	178	21 ± 0.8	13	16	18 <sup>+0</sup>	50 <sup>-0</sup>	22.4
13 - 16	330	21 ± 0.8	13	16	18 <sup>+0</sup>	50 <sup>-0</sup>	22.4

**(3) QTY & G.W. PER PACKAGE**

SERIES	INNER : REEL			OUTER : CARTON		
	QTY (PCS)	G.W. (gw)	STYLE	QTY (PCS)	G.W. (Kg)	SIZE (cm)
BRN6036	300	96	07 - 16	12,000	4.45	39 x 38 x 21.5
BRN6036	1,200	384	13 - 16	9,600	3.68	40 x 40 x 24

AE-001A

**Bourns Inductive Solution**

# SPECIFICATION FOR APPROVAL

REF :

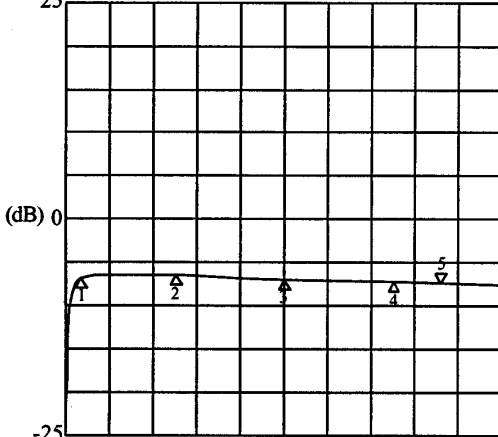
PAGE: 4

<b>PROD. NAME</b>	SMD BALUN TRANSFORMER	<b>DWG NO.</b>	BRN6036 Series
		<b>ITEM NO.</b>	

**X . INSERTION LOSS TEST CURVE :**

BRN6036-0001

25 CH1 S21

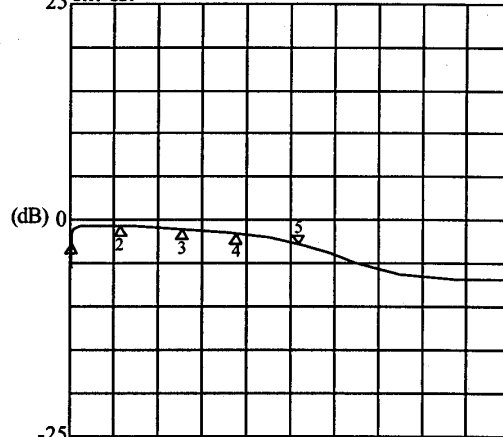


START 0.300 MHz      STOP 1000 MHz

- ① -1.6658 dB / 30 MHz
- ② -1.4457 dB / 250 MHz
- ③ -1.7386 dB / 500 MHz
- ④ -2.2781 dB / 750 MHz
- ⑤ -2.5002 dB / 850 MHz

BRN6036-0002

25 CH1 S21

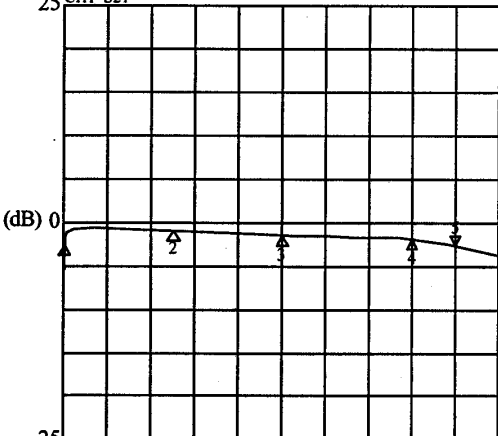


START 0.030 MHz      STOP 2000 MHz

- ① -2.8934 dB / 4.5 MHz
- ② -0.9879 dB / 250 MHz
- ③ -1.4378 dB / 500 MHz
- ④ -1.8515 dB / 750 MHz
- ⑤ -2.8915 dB / 1033 MHz

BRN6036-0003

25 CH1 S21

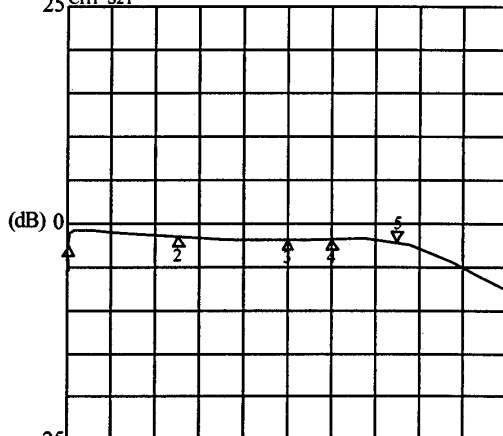


START 0.300 MHz      STOP 2000 MHz

- ① -2.6372 dB / 9.0 MHz
- ② -0.8795 dB / 500 MHz
- ③ -1.8247 dB / 1000 MHz
- ④ -2.3757 dB / 1600 MHz
- ⑤ -2.9741 dB / 1800 MHz

BRN6036-0004

25 CH1 S21



START 0.300 MHz      STOP 2000 MHz

- ① -2.7102 dB / 5.5 MHz
- ② -1.1637 dB / 550 MHz
- ③ -2.3313 dB / 1000 MHz
- ④ -2.2703 dB / 1200 MHz
- ⑤ -2.4139 dB / 1500 MHz

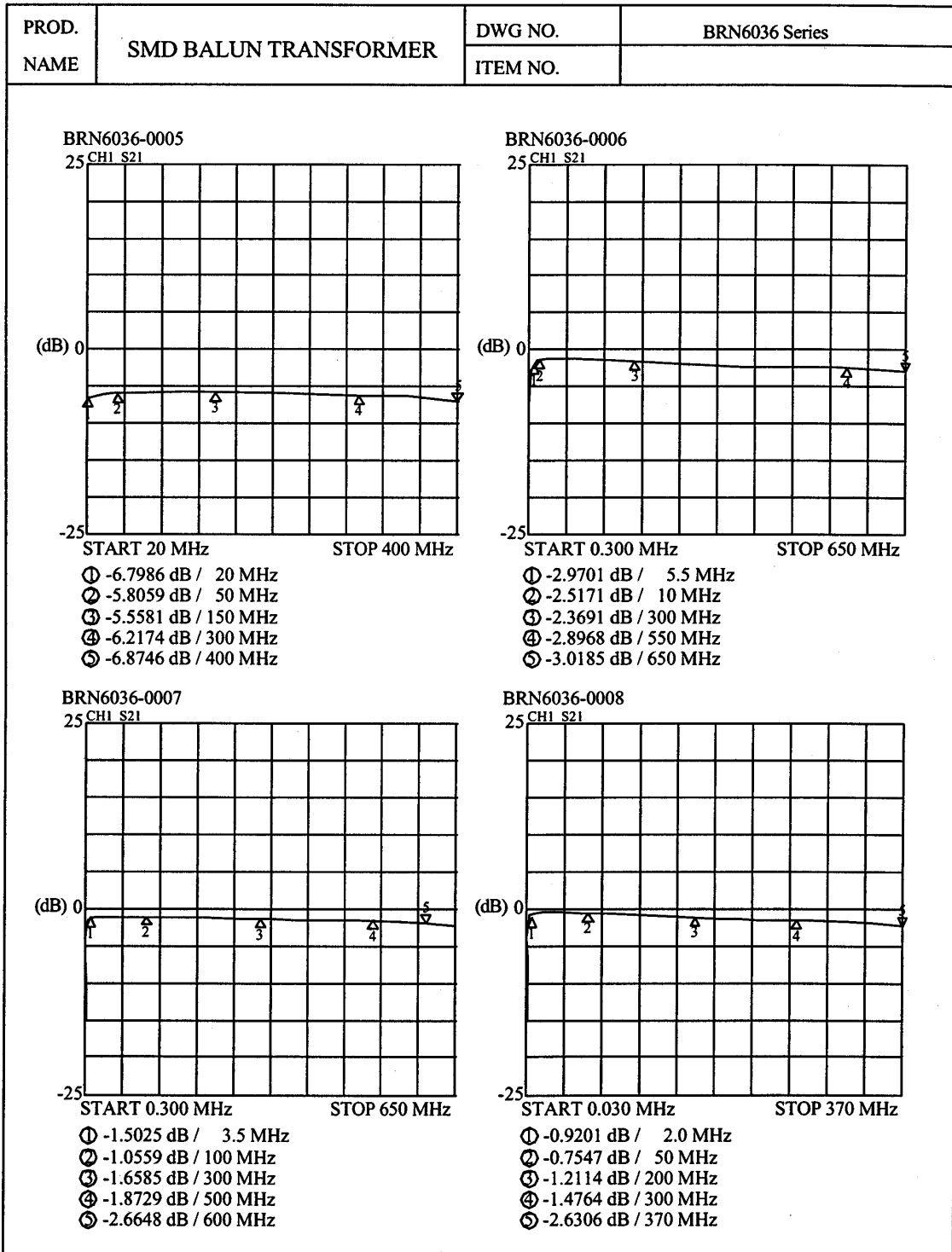
AE-001A

**Bourns Inductive Solution**

# SPECIFICATION FOR APPROVAL

REF :

PAGE: 5



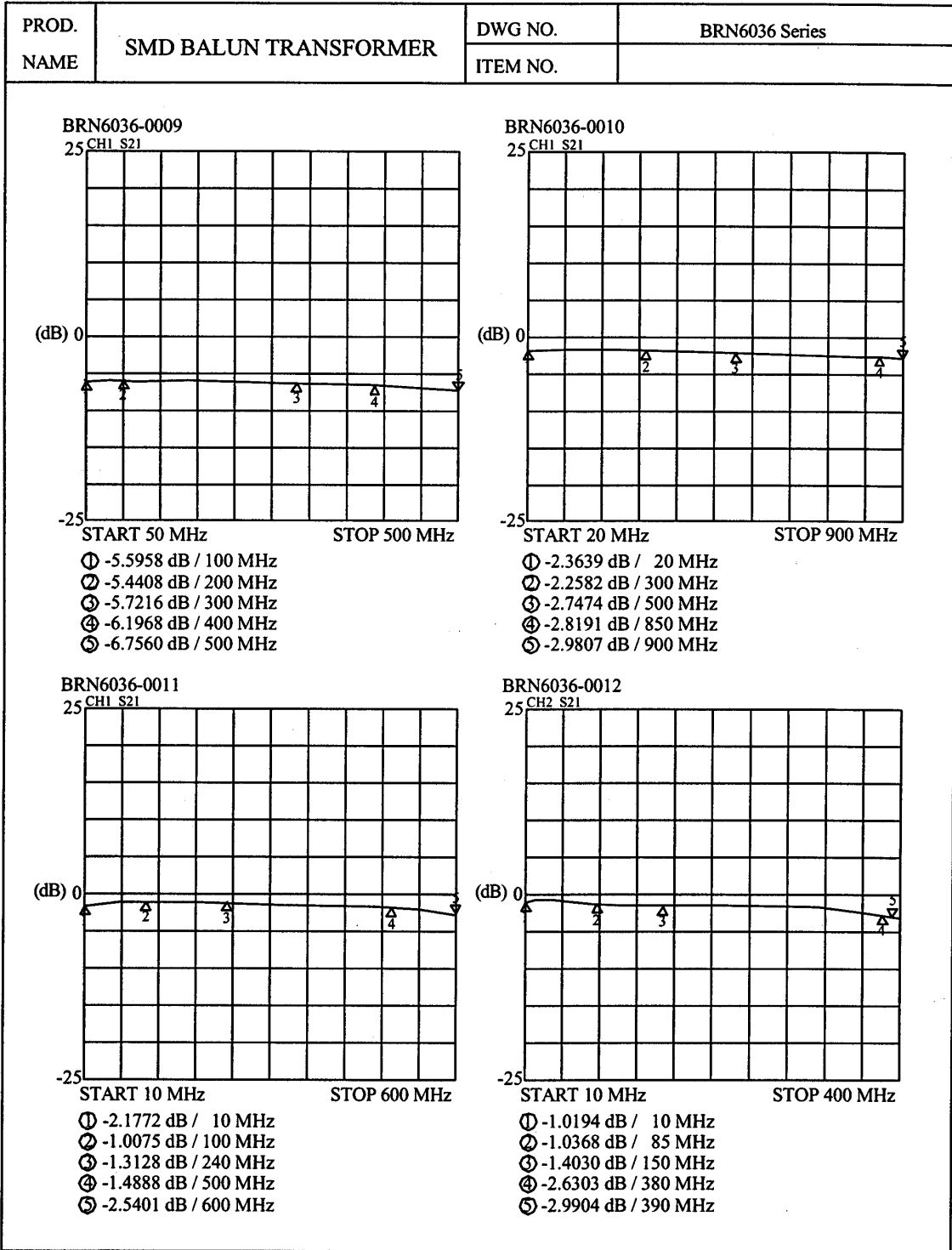
AE-001A

**Bourns Inductive Solution**

# SPECIFICATION FOR APPROVAL

REF :

PAGE: 6



AE-001A

**Bourns Inductive Solution**

# SPECIFICATION FOR APPROVAL

REF :

PAGE: 7

<b>PROD. NAME</b>	<b>SMD BALUN TRANSFORMER</b>	<b>DWG NO.</b>	BRN6036 Series
		<b>ITEM NO.</b>	

**BRN6036-0013**  
25 CH1 S21

START 0.300 MHz      STOP 2500 MHz

- ① -2.4058 dB / 10 MHz
- ② -2.5636 dB / 1000 MHz
- ③ -2.4434 dB / 850 MHz
- ④ -2.5226 dB / 1200 MHz
- ⑤ -1.3914 dB / 2000 MHz

**BRN6036-0014**  
25 CH1 S21

START 0.300 MHz      STOP 2500 MHz

- ① -2.4797 dB / 6.0 MHz
- ② -2.8760 dB / 1000 MHz
- ③ -2.8448 dB / 850 MHz
- ④ -2.6107 dB / 1200 MHz
- ⑤ -2.8353 dB / 2000 MHz

**BRN6036-0015**  
25 CH1 S21

START 0.300 MHz      STOP 2500 MHz

- ① -1.5440 dB / 6.0 MHz
- ② -2.5877 dB / 600 MHz
- ③ -2.8402 dB / 850 MHz
- ④ -1.8911 dB / 1200 MHz
- ⑤ -2.8265 dB / 1700 MHz

**BRN6036-0016**  
25 CH2 S21

START 0.300 MHz      STOP 2500 MHz

- ① -2.6800 dB / 5.0 MHz
- ② -2.3717 dB / 600 MHz
- ③ -1.7034 dB / 1000 MHz
- ④ -1.4836 dB / 1200 MHz
- ⑤ -2.5552 dB / 1400 MHz

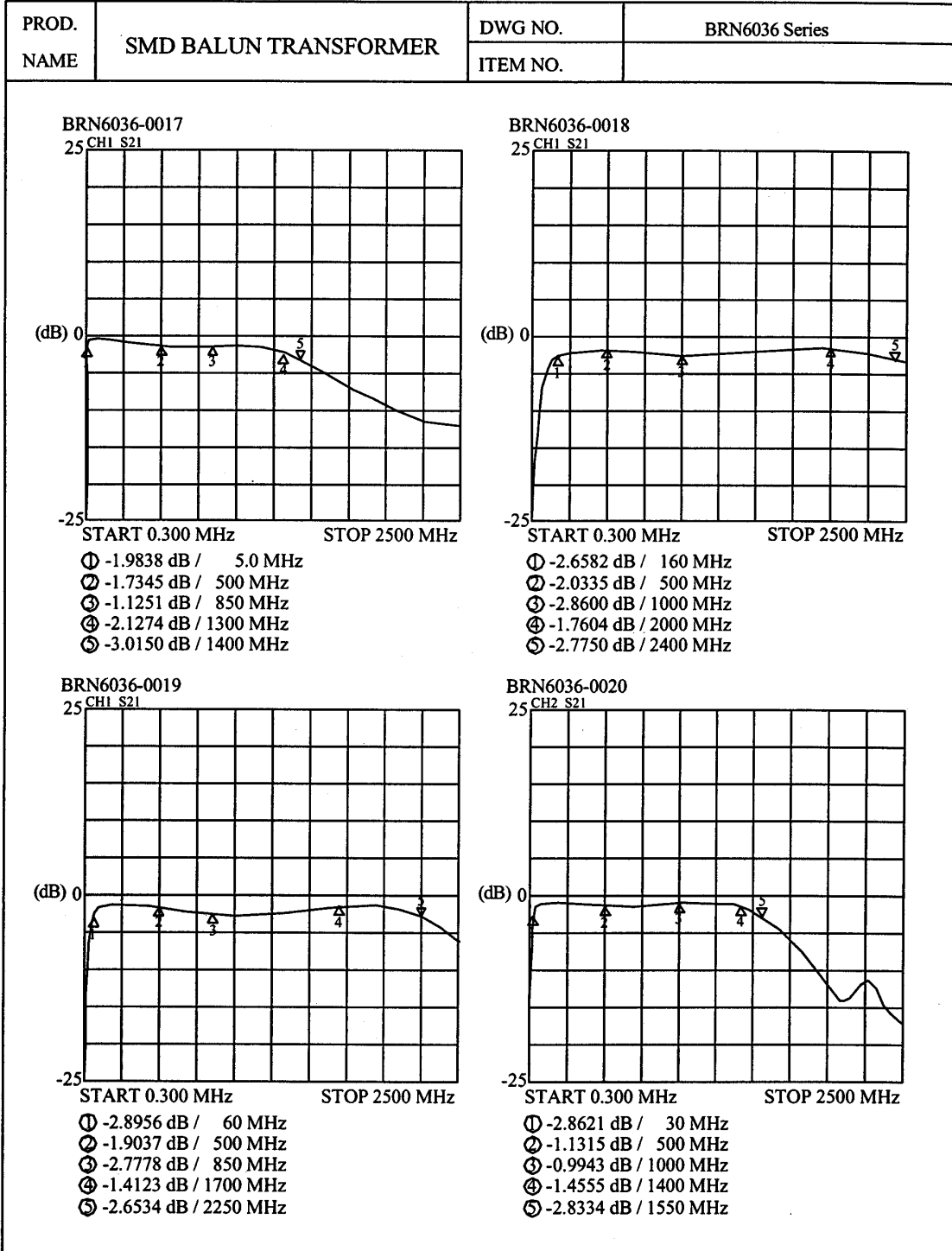
AE-001A

**Bourns Inductive Solution**

# SPECIFICATION FOR APPROVAL

REF :

PAGE: 8



AE-001A

**Bourns Inductive Solution**