



AHEAD OF WHAT'S POSSIBLE™

Search



MY HISTORY

PARAMETRIC SEARCH

PRODUCTS

APPLICATIONS

DESIGN CENTER

COMMUNITY

EDUCATION

SUPPORT

Design Center > Reference Designs > Hardware Reference Designs > Circuits from the Lab > CN0377

Design Center > Reference Designs > Hardware Reference Designs > Circuits from the Lab > CN0377



Print



My Analog

CN0377

DC to 2.5 GHz Switchable RF Attenuator Implemented with RF MEMS Switches

Overview

Circuit Function & Benefits

Circuit Description

Common Variations

Circuit Evaluation & Test

Discussions

Sample Products



Reference Designs
Rev.A

Описание схемы



Design & Integration Files



Evaluation Hardware

View All (1)

Design Resources

Design & Integration Files

- Schematic
- Bill of Materials
- Gerber Files
- PADs Layout Files
- Assembly Drawing

[Download Design Files](#)
(1.26 M)

Evaluation Hardware

Part Numbers with "Z" indicate RoHS Compliance. Boards checked are needed to evaluate this circuit EVAL-CN0377-EB1Z () DC to 2.5 GHz Switchable RF Attenuator Implemented with RF MEMS Switches

[Check Inventory & Purchase](#)

Features & Benefits

- DC to 2.5GHz Switchable RF Attenuator

Parts Used

- [ADGM1304](#)

Markets & Technology

Instrumentation & Measurement

- RF MEMS Switch Implementation
- Hermetically sealed switch contacts
- Actuation lifetime: 1 billion cycles (minimum)

- Signal Generators (Audio through RF)
- Automated Test Equipment
- Electronic Test & Measurement

Aerospace and Defense

Communications

- Wideband RF Signal Processing

Circuit Function & Benefits

The circuit shown in Figure 1 uses RF MEMS switches to route an RF signal between two surface-mount RF attenuators and two straight through paths.

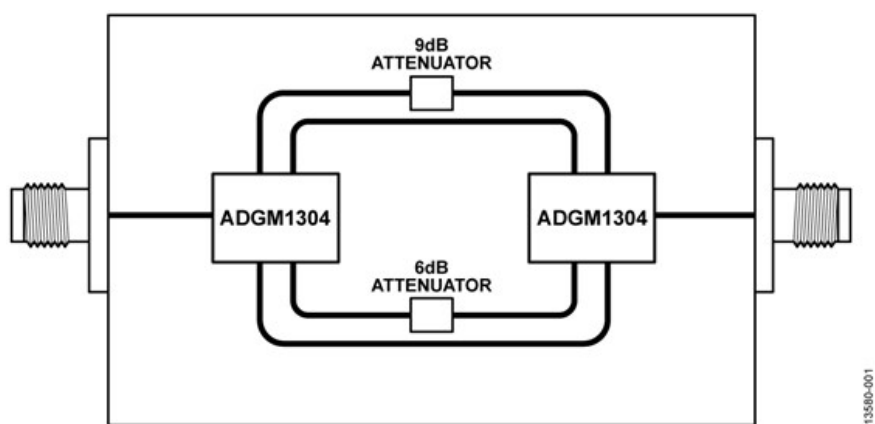


Figure 1. RF Switchable Attenuator Simplified Circuit Diagram

Attenuating RF signals is commonly done in RF test instrumentation and receiver front ends to protect downstream circuitry and to increase dynamic range. Using discrete attenuators and switches maximizes design flexibility and routing options. In the Figure 1 circuit, two ADGM1304 single-pole, four-throw (SP4T) RF MEMS switches in a back to back configuration yield four independently switchable paths between input and output. Two of the paths are straight through transmission lines, the third path contains a 6 dB attenuator, and the fourth path contains a 9 dB attenuator. Key to realizing this application is the use of ultralow insertion loss and highly linear switches to multiplex between the different path options.

The switches must be as transparent as possible to the RF signal and add as little insertion loss and distortion as possible. The ADGM1304 switches offer best in class insertion loss of 0.26 dB typical at 2.5 GHz, and a third-order intercept (IP3) performance of 69 dBm typical. In addition to insertion loss and distortion, another key benefit that the MEMS switch brings to this application is its ability to operate down to true dc. This means the switches do not limit lower frequency operation in a typical RF instrumentation attenuator switching application, and enables the instrument to pass dc bias voltages when required.

The physical size of the ADGM1304 device at 4 mm × 5 mm × 0.95 mm yields a significant reduction in printed circuit board (PCB) area compared to traditional electromechanical relays switching solutions. In addition, the actuation speed of the ADGM1304 switch is 30 μs, a significant improvement over electromechanical relays, which are in the order of milliseconds and introduce significant time lag in measurement systems. The actuation lifetime of the ADGM1304 device is guaranteed for one billion cycles, which is a major improvement over electromechanical relays and significantly increases overall system reliability.

Circuit Description

Figure 2 shows a close up photograph of the circuit evaluation board. The switches are marked in black. The ADGM1304 switches have a SP4T configuration; therefore, in a back to back arrangement, four individually selectable

paths can be achieved. The surface-mount attenuators in Figure 2. They are manufactured by EMC Technology. The 6 dB and 9 dB attenuators (TS0606F and TS0609F, respectively) have an optimal performance frequency range of dc to 10 GHz and a peak power handling level of 2 W (33 dBm). The ADGM1304 MEMS switches have a 3 dB bandwidth of up to 14 GHz and a power handling level of 36 dBm (continuous wave) and are therefore ideally suited for use with these attenuators.

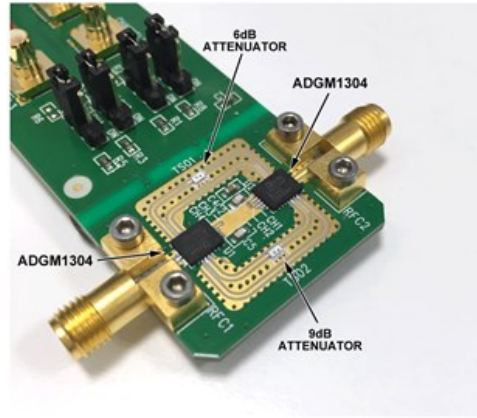


Figure 2. EVAL-CN0377-EB1Z Circuit Board

The RF edge launch SMA connectors are manufactured by Rosenberger (32K243-40ML5) and have a frequency range of dc to 18 GHz. The PCB material stack-up used is shown in Figure 3 and is the same as for the EVAL-ADGM1304EBZ evaluation board.

Metal 1	Finished Copper Plating: 1.5 oz (2.1 thou/53 μm) Rogers RO4003C: 8 thou laminate, Er 3.38 starting copper weight 0.5 oz/0.5 oz
Metal 2	Copper Weight: 1 oz (1.4 thou/35 μm)

~37.2 thou FR4

Metal 3	Copper Weight: 1 oz (1.4 thou/35 μm) Rogers RO4003C: 8 thou laminate, Er 3.38 starting copper weight 0.5 oz/0.5 oz
Metal 4	Finished Copper Plating: 1.5 oz (2.1 thou/53 μm)
CPWG RF trace width:	15 thou
CPWG RF trace to ground gap:	12.2 thou
Final overall PCB thickness:	62 thou
Final copper plating thickness on top and bottom layers:	1.5 oz

Figure 3. PCB Stack-Up with Co-Planar Waveguide with Ground (CPWG) Dimensions

Figure 4 shows the full schematic for the PCB. The links marked CH1 to CH4 select between each of the four paths (two through paths and two attenuator paths). Because all these paths are independently controllable, they can all be on, all off, or any other combination thereof as necessary.

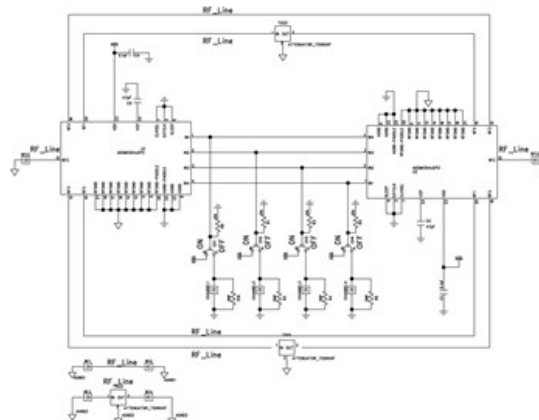


Figure 4. EVAL-CN0377-EB1Z Full PCB Schematic

Also shown on the schematic in Figure 4 are the calibration structures. These consist of two transmission lines, each of which is the same length as the distance from input to output of the attenuator network. One of these transmission lines incorporates a 6 dB attenuator. The function of these lines is to compare the switchable attenuator performance to the MEMS switches are present. Figure 5 shows a photograph of these calibration transmission lines; the line

on the left contains the 6 dB attenuator, which can be seen as the white rectangle in the center of the line.



Figure 5. Calibration Transmission Lines

Test results with all combinations of paths, including comparison calibration line frequency performance, are shown in Figure 6.

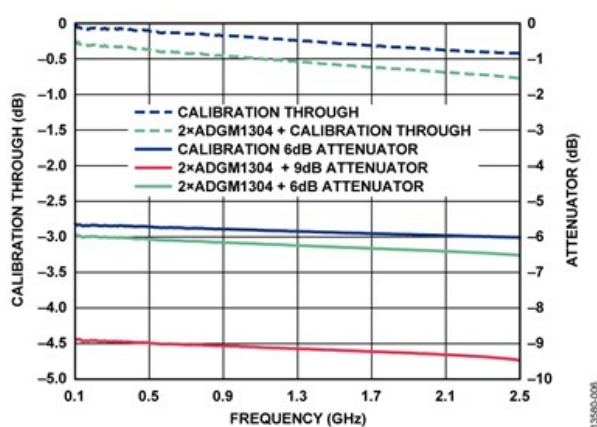


Figure 6. Frequency Response Results

The dotted blue insertion loss trace at the top corresponds to the calibration through line, which is the ideal case with no switch present. The dotted green insertion loss trace is two ADGM1304 devices in a through line configuration. There is an approximate increase in insertion loss of only 0.3 dB at 2.5 GHz.

The solid blue line corresponds to the calibration line that contains the 6 dB attenuator. The corresponding switches plus attenuator network is the solid green trace. The insertion loss plots are referenced the right hand side dB axis. Again, the loss the two switches add is small and monotonic.

The 9 dB switching attenuator network is shown in red. As higher attenuator values are used the loss of the switches becomes less visible due to the fact of its small magnitude compared to the attenuator value.

The board is fully functional above 2.5 GHz, but because the switch is an unterminated reflective switch, the off channels can give rise to resonances in the insertion loss at higher frequencies.

Common Variations

Different values of attenuators can be used in this circuit. As a general rule the maximum attenuator value that can be used is limited by the off isolation of the back to back switches. Another variation of this circuit would be instead of switching between different RF attenuators, RF filters can be used. Filter bank switching is a common application and one where the ADGM1304 can also bring value because of its low insertion loss, operation to dc, high linearity performance, and small size.

The circuit board is designed to be connected to a vector network analyzer (VNA) via SMA compatible connectors. The SMA connectors on the board are female. To switch between each of the attenuators and through channels, there are four links marked CH1 to CH4 which can be manually changed to drive the parallel logic inputs of the switches. In addition, the switches can be controlled using digital signals input through the SMB connectors on the board.

Equipment Needed

- Vector network analyzer (VNA), Keysight 8753E with 85033D 3.5 mm calibration kit, or equivalent
- EVAL-CN0377-EB1Z evaluation board
- Power supply (3.3 V)
- Coaxial RF cables with 3.5 mm type connectors

Setup and Test

The test setup is shown in Figure 7. The VNA can only be connected to the circuit evaluation board through 3.5 mm connector compatible cables. Before starting to test the circuit evaluation board, a full two-port s-parameter error correction calibration of the VNA to the end of the cables is required. Refer to the VNA manufacturer guidelines for how to perform this error correction calibration.

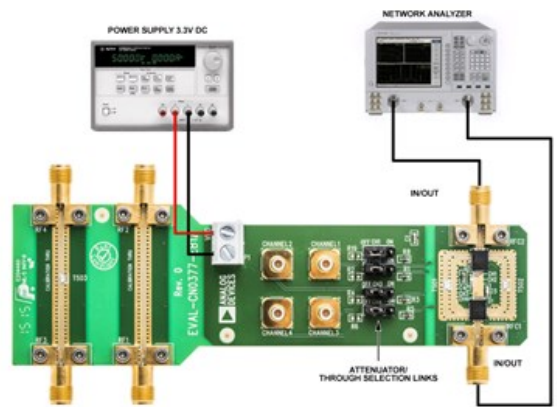


Figure 7. EVAL-CN0377-EB1Z Test Setup Functional Block Diagram

The circuit evaluation board is powered from a 3.3 V supply, and Table 1 shows the logic states for each link on the board to enable each of the attenuators and through paths.

Attenuator/Through Path	Link			
	CH1	CH2	CH3	CH4
6 dB (TS01)	0	0	1	0
9 dB (TS02)	1	0	0	0
Through 1 (TS01)	0	0	0	1
Through 2 (TS02)	0	1	0	0

Discussions

[Community Discussion In Engineering Zone](#)

Sample Products

Samples

Product	Description	Available Product Models to Sample
ADGM1304	0 Hz/DC to 14 GHz, Single-Pole, Four-Throw MEMS Switch With Integrated Driver	<input type="checkbox"/> ADGM1304JCPZ-RL7

Add Selections to Cart

Evaluation Boards

Pricing displayed is based on 1-piece.

Model	Description	Price	RoHS
EVAL-CN0377-EB1Z Production	DC to 2.5 GHz Switchable RF Attenuator Implemented with RF MEMS Switches		Yes

Back

Add to cart

UNITED STATES ▾

Check Inventory

Pricing displayed is based on 1-piece. The USA list pricing shown is for budgetary use only, shown in United States dollars (FOB USA per unit), and is subject to change. International prices may vary due to local duties, taxes, fees and exchange rates.

15,000

Problem Solvers

4,700+

Patents Worldwide

125,000

Customers

50+

Years

Ahead of What's Possible

Analog Devices is a global leader in the design and manufacturing of analog, mixed signal, and DSP integrated circuits to help solve the toughest engineering challenges.

See the Innovations

Analog Devices. Dedicated to solving the toughest engineering challenges.

SOCIAL



QUICK LINKS

About ADI
Analog Dialogue
Contact us
News Room
Sales & Distribution

Alliances
Careers
Investor Relations
Quality & Reliability

LANGUAGES

English
简体中文
日本語
Русский

NEWSLETTERS

Interested in the latest news and articles about ADI products, design tools, training and events? Choose from one of our 12 newsletters that match your product area of interest, delivered monthly or quarterly to your inbox.

Sign Up