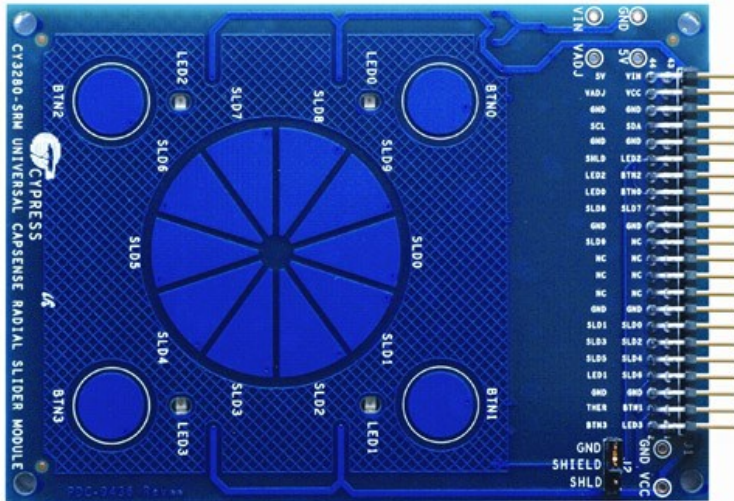


## CY3280-SRM Radial Slider Module Kit

Last Updated: Feb 09, 2012



### PRICE & AVAILABILITY

### RELATED RESOURCES

- [Application Notes - Obsolete \(3\)](#)
- [Development Kits/Boards \(10\)](#)
- [Code Examples \(3\)](#)

### RELATED PAGES

- [CapSense® Controllers CY8C20x34](#)

#### Kit Contents

- CY3280-SRM Radial Slider Module Board
- CY3280-SRM Quick Start Guide
- CY3280-SRM Kit CD
- One 1.5mm Acrylic Overlay
- One 3mm Acrylic Overlay

#### Hardware Description

The CY3280-SRM Radial Slider Module consists of four CapSense buttons, one radial slider (with ten sensors) and four LEDs. This module connects to any CY3280 Universal CapSense Controller Board, such as the latest CY3280-20x66 DVK.

#### Hardware Required to Use This Kit

1. Any CY3280 Universal CapSense Controller Board
2. CY3210-MiniProg
3. B Mini-B Cable

| Software Title  | Description                                       | Link                     |
|-----------------|---|--------------------------|
| PSoC Designer   | This kit requires PSoC Designer for development   | <a href="#">Download</a> |
| PSoC Programmer | This kit requires PSoC Programmer for programming | <a href="#">Download</a> |

### Related Files

| File Title                                    | Language | Size      | Last Updated |
|---|----------|-----------|--------------|
| CY3280-SRM_CodeExamples.zip <a href="#">↓</a> | English  | 16.59 MB  | 12/22/2014   |
| CY3280-SRM Release Notes.pdf                  | English  | 94.8 KB   | 06/28/2012   |
| CY3280-SRM_Board_Design_Files.zip             | English  | 658.46 KB | 11/18/2011   |
| CY3280-SRM Quick Start Guide.pdf              | English  | 804.19 KB | 11/09/2011   |

Need help? Ask a question and find answers in the [Cypress Developer Community Forums](#).

Low/intermittent bandwidth users tip: Firefox and Chrome browsers will allow downloads to be resumed if your connection is lost during download.

Application Notes - Obsolete

|  |            |
|--|------------|
| AN44207 - CapSense Express™ APIs for Register Configuration      | 02/22/2016 |
| AN44208 - CapSense® Express™ - I2C Communication Timing Analysis | 02/22/2016 |
| AN42137 - Capsense™ Express Software Tool                        | 02/22/2016 |

Development Kits/Boards

|  |            |
|--|------------|
| CY3280-BK1 Universal CapSense Controller - Basic Kit 1 | 03/02/2017 |
| CY3280-24x94 Universal CapSense Controller Board       | 01/09/2015 |
| CY3280-BBM Universal CapSense Prototyping Module Kit   | 02/09/2012 |
| CY3280-22x45 Universal CapSense Controller Board       | 09/18/2013 |
| CY3280-CPM1 CapSensePlus Module                        | 02/27/2012 |
| CY3280-BMM Matrix Button Module Kit                    | 04/12/2016 |
| CY3280-BSM Simple Button Module Kit                    | 02/08/2012 |
| CY3280-SLM Linear Slider Module Kit                    | 02/09/2012 |
| CY3280-SRM Radial Slider Module Kit                    | 02/09/2012 |
| CY3280-20x66 Universal CapSense Controller Kit         | 07/25/2016 |

Code Examples

|  |            |
|--|------------|
| CE56996 - CapSense® Buttons using SmartSense™ on CY8C20xx6A            | 09/05/2012 |
| CE56994 - CapSense® Buttons and Slider Using SmartSense™ on CY8C20xx6A | 09/05/2012 |
| CE56995 - CapSense® Matrix Buttons Using SmartSense™ on CY8C20xx6A     | 09/05/2012 |

**SOLUTIONS**

Automotive  
Industrial  
Consumer

**PRODUCTS**

Wireless  
Microcontrollers (MCUs)  
Memory  
Touch Sensing  
Power Management  
Clocks & Buffers

**DESIGN SUPPORT**

Community  
Videos  
Development Kits  
Quality & Reliability  
Product Roadmaps

**BUY & SAMPLE**

Request Samples  
Buy Devices  
Buy Development Kits

**ABOUT US**

Investors  
Careers

**CORPORATE HEADQUARTERS**

Cypress Semiconductor Corp.  
198 Champion Court  
San Jose, CA A  
Tel: +1-408-943-2600

**CUSTOMER SERVICE SUPPORT**

+1-800-541-4736  
Hours:  
8:00AM - 5:00PM (local time)  
Create a MyCase

**INTERNATIONAL SUPPORT**

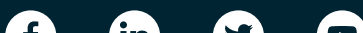
+1-408-943-2600  
United States +1-800-541-4736  
Hours:  
4:30AM - 1:30PM (pacific time)  
7:30PM - 4:30AM (standard time)

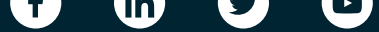
**OTHER REQUESTS**

Contact Us  
Report a Website Problem

**CAREERS**

**INVESTORS**





© Cypress Semiconductor Corporation. All rights reserved.