



AD-FMCJESDADC1-EBZ

AD-FMCJESDADC1-EBZ Rapid Development Board

Overview

Reference Board

Documentation

Software

Buy



Evaluation
Software

View All

Markets & Technology

Aerospace and Defense

- Radar

Applicable Parts

- AD9250

Product Details


The AD-FMCJESDADC1-EBZ is an easy-to-use FMC-based rapid development board comprising four 14-bit, 250 MSPS, A/D conversion channels and featuring a JESD204B high-speed serial output interface. The board contains two AD9250 dual-channel ADC ICs with on-board clocking and power supplies to facilitate seamless connectivity with the Xilinx ML605, KC705 or VC707 development platform.

Note

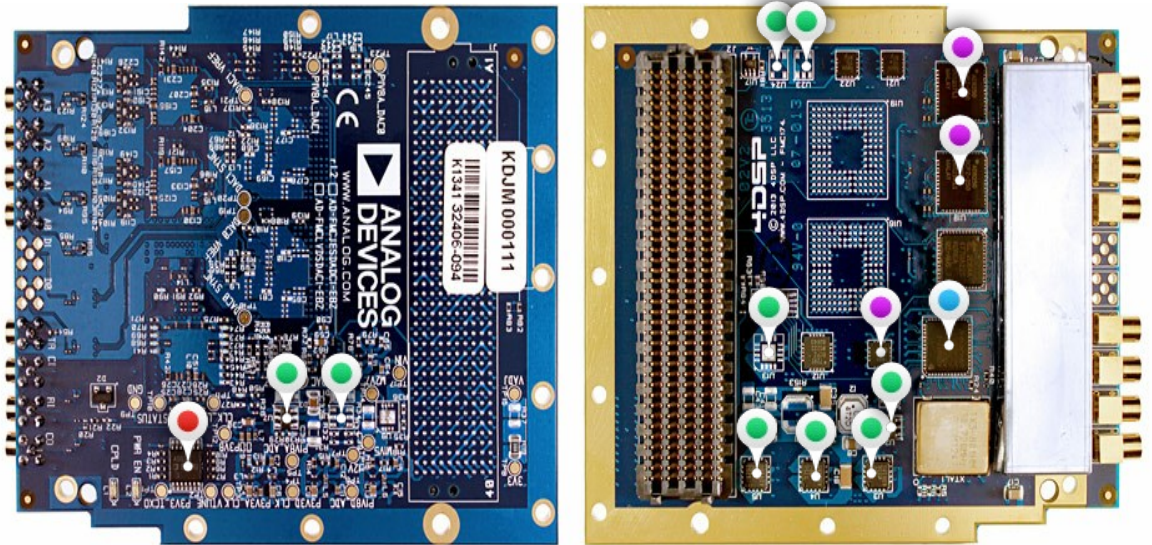
The AD-FMCJESDADC1-EBZ Rapid Prototyping module's primary purpose is to facilitate understanding/validating/verifying the JESD204B interface within the FPGA development platform ecosystem. This module was designed to comply with all of the FMC physical specifications in terms of mechanical size and mounting hole locations, and as such, PCB layout tradeoffs... [Show More..](#)



Reference Board: AD-FMCJESDADC1-EBZ

 Hover over the colored pins to learn more about Analog Devices' products used on this board

Product Categories:  Clock and Timing  Data Converters  Interface and Isolation
 Power Management



Documentation



 See All

 Evaluation Documentation

Evaluation Board Documentation

[Visit the AD-FMCJESDADC1-EBZ resource page](#) 

[Learn about the JESD204 Serial Interface](#)

Software



 See All

 Evaluation Software

JESD204 Interface Framework

Integrated JESD204 software framework for rapid system-level development and optimization

Buy



Evaluation Boards

Pricing displayed is based on 1-piece.

Model	Description	Price	RoHS
AD-FMCJESDADC1-EBZ Production	High Speed ADC FMC Rapid Development Board		Yes

[Back](#)

[Add to cart](#)

[UNITED STATES](#) ▾

[Check Inventory](#)

Pricing displayed is based on 1-piece. The USA list pricing shown is for budgetary use only, shown in United States dollars (FOB USA per unit), and is subject to change. International prices may vary due to local duties, taxes, fees and exchange rates.

15,000

Problem Solvers

4,700+

Patents Worldwide

125,000

Customers

50+

Years

Ahead of What's Possible

Analog Devices is a global leader in the design and manufacturing of analog, mixed signal, and DSP integrated circuits to help solve the toughest engineering challenges.

[See the Innovations](#)

Analog Devices. Dedicated to solving the toughest engineering challenges.

SOCIAL



QUICK LINKS

[About ADI](#)
[Analog Dialogue](#)
[Contact us](#)
[News Room](#)
[Sales & Distribution](#)

[Alliances](#)
[Careers](#)
[Investor Relations](#)
[Quality & Reliability](#)

LANGUAGES

[English](#)
[简体中文](#)
[日本語](#)
[Русский](#)

NEWSLETTERS

Interested in the latest news and articles about ADI products, design tools, training and events? Choose from one of our 12 newsletters that match your product area of interest, delivered monthly or quarterly to your inbox.

[Sign Up](#)