



[Parametric Product Search](#)

[Cross-Reference and Obsolete Search](#)

Welcome User
[Log In](#)
[View Cart](#)

[PRODUCTS](#)

[APPLICATIONS](#)

[RESOURCES & TOOLS](#)

[SAMPLE & PURCHASE](#)

[SUPPORT](#)

[myAnalog](#)

[ADI Home](#) > [AD9250-FMC-250EBZ Reference Board](#)

[Share](#) | [Print](#) | [Save to myAnalog](#)

AD9250-FMC-250EBZ REFERENCE BOARD

[Product Details](#)

[Buy](#)

The AD9250-FMC-250EBZ is an easy-to-use FMC-based evaluation board comprising four 14-bit, 250 MSPS, A/D conversion channels and featuring a JESD204B high-speed serial output interface. The board contains two AD9250 dual-channel ADC ICs with on-board clocking and power supplies to facilitate seamless connectivity with the Xilinx ML605, KC705 or VC707 development platform.

[Check Price and Availability](#)



[Purchase the AD9250-FMC-250EBZ Kit](#)

KEY PERFORMANCE FEATURES

- IF sampling frequencies of up to 400 MHz
- SNR = 70.6 dBFS at 185 MHz AIN and 250 MSPS
- SFDR = 88 dBc at 185 MHz AIN and 250 MSPS
- Total power consumption: 711 mW at 250 MSPS

ADDITIONAL INFORMATION



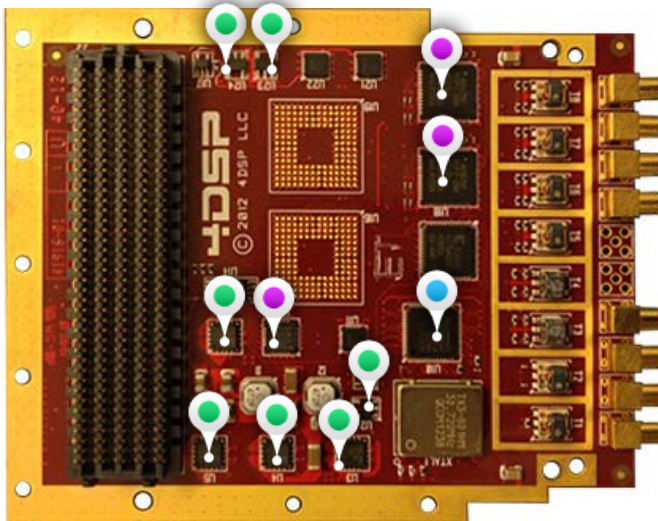
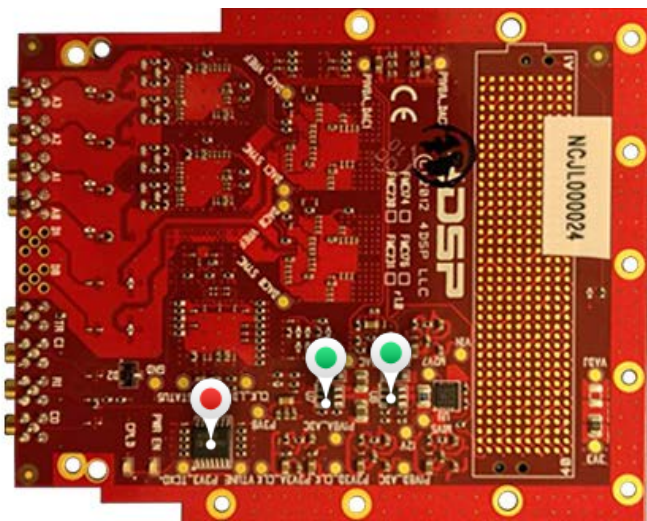
- Press Release: [FPGA Mezzanine Card Rapid Prototyping Kit Simplifies JESD204B-Compatible A/D Converter-to-FPGA Connectivity \(26 Feb, 2013\)](#)
- Visit the [AD9250-FMC-250EBZ resource page](#). (Wiki Site)
- [AD9250 Product Page/Data Sheet](#)
- [Learn about the JESD204 Serial Interface.](#)
- AD9250 wins Best Electronic Design 2012 Award!

[Send Feedback](#)

REFERENCE BOARD: AD9250-FMC-250EBZ

Hover over the colored pins to learn more about Analog Devices' products used on this board

Product Categories: ■ Clock and Timing ■ Data Converters ■ Interface and Isolation ■ Power Management



VIDEO: RAPID PROTOTYPING WITH JESD204B USING FMC AND XILINX FPGAS

DISCUSS. DESIGN. DELIVER. ▶ DESIGN CONFERENCE 2013
 Free one-day technical conference and exhibition.
 ANALOG DEVICES XILINX MathWorks Register Now >>

Buy

PRICE, PACKAGING, AVAILABILITY

AD9250-FMC-250EBZ Reference Board

[Print Table](#)

Model	Description	Price	RoHS	View PCN/PDN	Check Inventory/Purchase/Sample
AD9250-FMC-250EBZ Status: Contact ADI	FMC-Based Evaluation Board Yes			-	

Pricing displayed is based on 1-piece. The USA list pricing shown is for budgetary use only, shown in United States dollars (FOB USA per unit), and is subject to change. International prices may vary due to local duties, taxes, fees and exchange rates.

[Check Inventory & Purchase](#)

[» View Sales and Distribution Offices](#)

[Careers](#) | [Contact ADI](#) | [About ADI](#) | [Investor Relations](#) | [News Room](#) | [About This Site](#) | [Site Map](#) | [简体中文](#) | [日本語](#) | [eNewsletters](#) | [Analog Dialogue](#)



© 1995 - 2013 Analog Devices, Inc. All Rights Reserved