



AHEAD OF WHAT'S POSSIBLE™

Search



PARAMETRIC SEARCH

PRODUCTS

APPLICATIONS

DESIGN CENTER

COMMUNITY

EDUCATION

SUPPORT



CN0160

CN0160



Print



My Analog

CN0160

Universal Serial Bus (USB) Peripheral Isolator Circuit

Overview

Circuit Function & Benefits

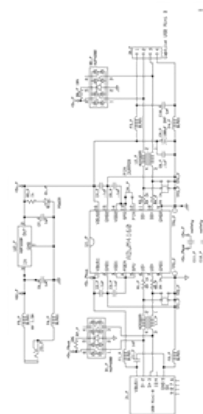
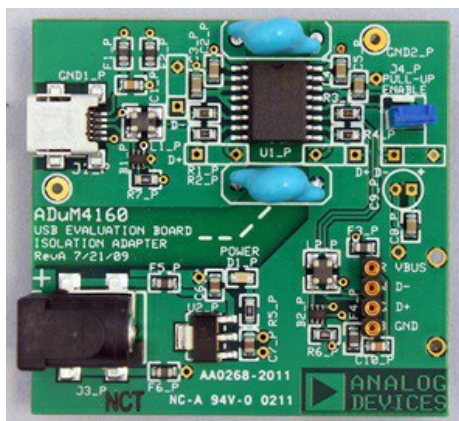
Circuit Description

Common Variations

Circuit Evaluation & Test

Discussions

Sample Products



Reference Designs

参考回路: 日本語版

中文参考电路

Описание схемы



Design & Integration Files



Evaluation Hardware

View All (1)

Design Resources

Design & Integration Files

- Schematic
- Bill of Materials
- Gerber Files
- Assembly Drawing

[Download Design Files](#)
(406 kB)

Evaluation Hardware

Part Numbers with "Z" indicate RoHS Compliance. Boards checked are needed to evaluate this circuit EVAL-CN0160-EB1Z () Universal Serial Bus USB Peripheral Isolator Circuit

[Check Inventory & Purchase](#)

Features & Benefits

- Isolation from USB peripheral device
- Standard USB interface

Parts Used

- [ADUM4160](#)
- [ADP3338](#)
- [ADUM3160](#)

Markets & Technology

Aerospace and Defense

- Avionics
- Unmanned Systems

Healthcare

- Clinical Monitoring
- Life Sciences & Medical Instrumentation
- Health, Wellness and Fitness
- Wearable Health Monitoring
- Portable Blood Analyzer
- Body-Worn Insulin Pump

Consumer

- Digital Imaging
- Home Entertainment
- Portable
- ProAV

Circuit Function & Benefits

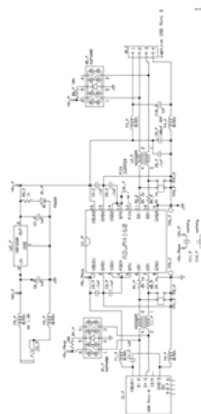
The universal serial bus (USB) is rapidly becoming the standard interface for most PC peripherals. It is displacing RS-232 and the parallel printer port because of superior speed, flexibility, and support of device hot swap. There has been a strong desire on the part of industrial and medical equipment manufacturers to use this bus as well, but adoption has been slow because there has not been a good way to provide the isolation required for connections to machines that control dangerous voltages or low leakage defibrillation proof connections in medical applications.

The [ADuM4160](#) provides an inexpensive and easy to implement isolation buffer for medical and industrial peripherals. The challenges that need to be met are:

1. Isolate directly in the USB D+ and D- lines allowing the use of existing USB infrastructure in microprocessors.
2. Implement an automatic scheme for data flow of control that does not require external control lines.
3. Provide medical grade isolation.
4. Allow a complete peripheral to meet the USB-IF certification standards.
5. Support full speed (12 Mbps) and low speed (1.5 Mbps) signaling rates.
6. Support flexible power configurations.

The circuit shown in Figure 1 isolates a peripheral device that already supports a USB interface. Because the peripheral is not explicitly defined in this circuit, power to run the secondary side of the isolator has been provided as part of the solution. If the circuit is built onto the PCB of a peripheral design, power could be sourced from the peripheral's off line supply, a battery, or the USB cable bus power, depending on the needs of the application.

The application circuit shown is typical of many medical and industrial applications.



FigureB Peripheral Isolator Circuit

Circuit Description

Power for the upstream USB connector is derived from the 5 V VBUS voltage available on the USB cable. The peripheral device must provide all of the signals and pull-up or pull-down resistors that would be required if the ADuM4160 were not present. The downstream side power is provided by a wall wart and an [ADP3338](#) LDO regulator (5 V option). This LDO provides very low dropout voltage, thereby reducing the regulation requirements on the wall wart. Its small size (SOT-223) and 1 A current capability are ideal for this general-purpose circuit where the peripheral device may require cable power to operate.

The ADuM4160 has several options for power, speed, and protection that must be determined. The first is the speed at which the peripheral runs. Peripheral devices run at one of three speeds: low (1.5 Mbps), full (12 Mbps), and high speed (480 Mbps). The ADuM4160 does not support high speed operation and blocks handshaking signals that are used to negotiate that speed. High speed mode starts as a full speed configuration, and the peripheral requests high speed support through a process called a high speed chirp. The ADuM4160 ignores the high speed chirp; therefore, the request for high speed operation is never passed on to the host, and the peripheral continues to work at full speed. The speed of the peripheral on the USB bus is either low speed or full speed. The particular peripheral determines the speed required, and the ADuM4160 must be set to match this speed via the state of the SPU and SPD pins. In the current schematic, the SPU and SPD pins are tied to the internally regulated 3.3 V power supplies, VDD1 and VDD2, setting the part for full speed operation.

Power can be provided as 5 V through the VBUSx pins, and the 3.3 V signaling voltage is created by an internal 3.3 V regulator at the VDDx pin. Alternatively, the 3.3 V power can also be provided to VBUSx and VDDx, and the part uses the external supply directly, disabling the internal regulator.

This option was provided to allow the ADuM4160 to run either from a 5 V USB cable or from an available 5 V or 3.3 V rail supplied by a peripheral. In the circuit shown, it was connected to accept 5 V from each side, and the internal regulators are active.

The ADuM4160 has an option to delay application of the upstream pull-up under control of the peripheral. This function is controlled by the PIN input. In this application, the PIN input is jumpered high so that the upstream pull-up is applied as soon as peripheral power is applied. In other applications, it can be connected to a GPIO pin of a controller, a fixed delay circuit can be applied, or it can be connected as shown in this circuit. It is the designer's choice how to use this functionality.

Protection devices are included in this circuit. These were chosen from manufacturers that have a wide variety of components available, and the particular components were chosen to allow them to be replaced by 0 Ω shorts, thereby removing them from the circuit. The choice of protection should be reviewed by the designer and can range from no external protection to a full complement of transient suppressors and filter elements. The circuit elements included in this circuit show a typical high protection configuration.

When the circuit is functioning, packets are detected and data is shuttled from one side of the isolation barrier to the other. Data shown in Figure 2 and Figure 3 demonstrates a typical full speed transaction both as time domain data and as an eye diagram. Features to note in the real-time data are the passive idle state at the start of the packet, which transitions to a driven J, and then the end of the packet at the end of the transaction showing as a single-ended zero state followed by idle J. It is the automatic flow of control and the handling of these special logic states that make the ADuM4160 unique in the marketplace.

The data shown in Figure 2 and Figure 3 below are generated as part of the USB-IF qualification process. Figure 2 shows a test data packet from the ADuM4160 upstream port to the host. Portions to note are the leading idle state where the passive resistor network holds an idle J state. The center portion of the packet is a mix of J and K states. The right side of the packet is an EOP (end of packet) marker, which is a single-ended 0 followed by a driven J, which transitions to an idle J.

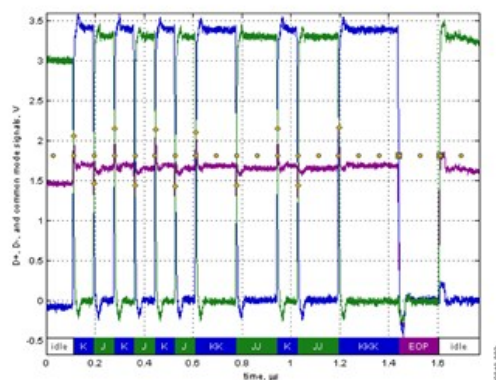


Figure 2. Full Speed Test Packet Traffic Driven By the Upstream ADuM4160 Port

The following are applicable test references:

- Upstream full speed signal quality test reference—USB 2.0 Specification, Section 7.1.11., Section 7.1.2.1.
- Upstream full speed rise time test reference—USB 2.0 Specification, Section 7.1.11., Section 7.1.2.2.
- Upstream full speed fall time test reference—USB 2.0 Specification, Section 7.1.11., Section 7.1.2.2.

Figure 3 is a full speed eye diagram showing that the ADuM4160 provides an adequate open eye, staying well out of the keep out region. Similar data is also taken for low speed evaluation.

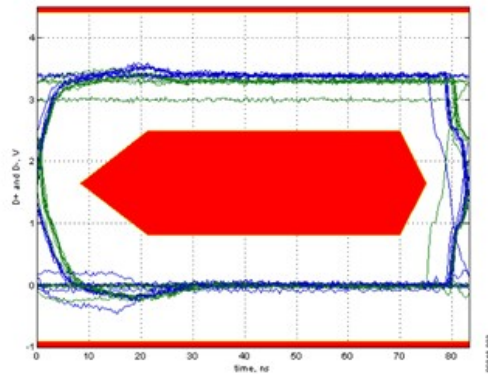


Figure 3. Full Speed Eye Diagram Showing Exclusion Zone

A photo of a typical application circuit is shown in Figure 4. The ADuM4160 evaluation board (left side of photo) is connected to the evaluation board for the AD7991 4-channel, 12-/10-/8-bit ADC with I2C compatible interface. The ADC evaluation board acts as a peripheral, which interfaces to a PC (for test and evaluation of the ADC) via the USB port. This provides total isolation between the ADuMB port and the ADC evaluation board.

Because of the fast edge speeds associated with this circuit, excellent layout, decoupling, and grounding techniques must be employed in order to pass system EMI/RFI tests. See Tutorial MT-031, Tutorial MT-101, and the AN-0971 Application Note for guidance. A complete design support package for this circuit note can be found at <http://www.analog.com/CN0160-DesignSupport>.

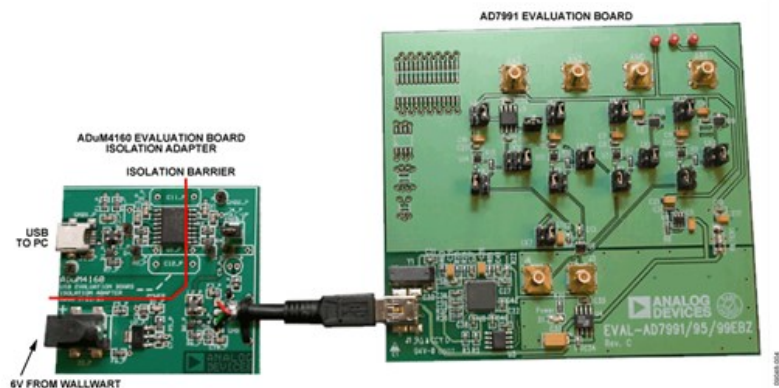


Figure 4. Photo of ADuMB Evaluation Board Connected to USB Port of AD7991 Evaluation Board

Common Variations

Other linear regulators may be substituted depending on system requirements. Refer to the ADIsimPower™ design tool for details.

Circuit Evaluation & Test

The ADuM4160 evaluation board isolation adapter described in this note is used for evaluation and testing. A detailed schematic and a picture of the circuit boards used in the test setup are shown in Figure 1 and Figure 4.

Equipment Needed

The following equipment is needed: a PC with Windows® XP or Vista, a USB data port connection, the ADuM4160 evaluation board isolation adapter, the EVAL-7991EBZ evaluation board and AD7991 evaluation software, two USB cables, and a high speed digital oscilloscope.

Getting Started

In addition to the circuit and schematic of the test setup described in this Circuit Note, details regarding the ADuM4160 evaluation board isolation adapter, including schematics, Gerber's, and bill of materials, are available at <http://www.analog.com/CN0160-DesignSupport>.

Functional Block Diagram

See Figure 1 for the schematic diagram and other information regarding the described test setup.

Discussions

[Community Discussion In Engineering Zone](#)

Sample Products

Samples

| Product | Description | Available Product Models to Sample |
|--------------------------|---|---|
| ADUM4160 | Full/Low Speed USB Digital Isolator | <input type="checkbox"/> ADUM4160BRIZ <input type="checkbox"/> ADUM4160BRWZ |
| ADP3338 | High Accuracy Ultralow Quiescent Current, 1A, anyCAP® Dropout Regulator | Contact ADI |
| ADUM3160 | Full/Low Speed USB Digital Isolator | <input type="checkbox"/> ADUM3160BRWZ <input type="checkbox"/> ADUM3160WBRWZ |

[Add Selections to Cart](#)

Evaluation Boards

Pricing displayed is based on 1-piece.

| Model | Description | Price | RoHS |
|--|--|-------|------|
| EVAL-CN0160-EB1Z Production | Universal Serial Bus (USB) Peripheral Isolator Circuit | | Yes |

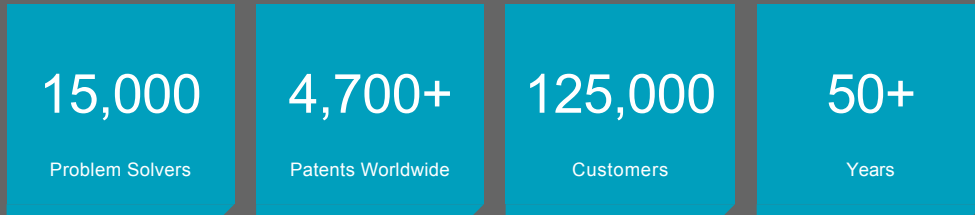
[Back](#)

[Add to cart](#)

[Select a country](#) ▾

[Check Inventory](#)

Pricing displayed is based on 1-piece. The USA list pricing shown is for budgetary use only, shown in United States dollars (FOB USA per unit), and is subject to change. International prices may vary due to local duties, taxes, fees and exchange rates.



Ahead of What's Possible

ADI enables our customers to interpret the world around us by intelligently bridging the physical and digital with unmatched technologies that sense, measure and connect. We collaborate with our customers to accelerate the pace of innovation and create breakthrough solutions that are ahead of what's possible.

[See the Innovations](#)

Analog Devices. Dedicated to solving the toughest engineering challenges.

SOCIAL



QUICK LINKS

- About ADI
- Analog Dialogue
- Contact us
- News Room
- Sales & Distribution
- Alliances
- Careers
- Investor Relations
- Quality & Reliability

LANGUAGES

- English
- 简体中文
- 日本語
- Русский

NEWSLETTERS

Interested in the latest news and articles about ADI products, design tools, training and events? Choose from one of our 12 newsletters that match your product area of interest, delivered monthly or quarterly to your inbox.

[Sign Up](#)