

DFEH10040D-4R7M#

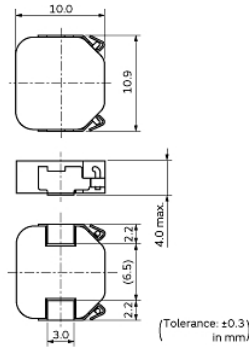
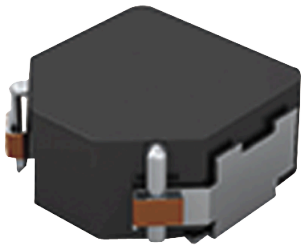
“#” indicates a package specification code.



< List of part numbers with package codes >

DFEH10040D-4R7M=P3

Appearance & Shape



References

| Packaging | Specifications | Standard Packing Quantity |
|-----------|------------------|---------------------------|
| =P3 | 330Embossed Tape | 500 |

| Mass (typ.) | |
|-------------|---------|
| 1 piece | 2.1295g |

Notices

Rated current (I_{sat}) is specified when the decrease of the initial inductance value at 20%. Rated current (I_{temp}) is specified when temperature of the inductor is raised 40°C by DC current.

Attention

- 1.This datasheet is downloaded from the website of Murata Manufacturing Co., Ltd. Therefore, it's specifications are subject to change or our products in it may be discontinued without advance notice. Please check with our sales representatives or product engineers before ordering.
- 2.This datasheet has only typical specifications because there is no space for detailed specifications. Therefore, please review our product specifications or consult the approval sheet for product specifications before ordering.

DFEH10040D-4R7M#

“#” indicates a package specification code.



Specifications

| | |
|---|----------------|
| L size | 10.9±0.3mm |
| W size | 10.0±0.3mm |
| T size | 4.0mm |
| Size code inch (mm) | 4339 (109100) |
| Inductance | 4.7μH±20% |
| Inductance Test Frequency | 0.1MHz |
| Rated current (Isat) (Based on Inductance change) | 7300mA |
| Rated current (Itemp) (Based on Temperature rise) | 8800mA |
| Max. of DC resistance | 0.016Ω |
| Operating Temperature Range (Self-temperature rise is included) | -40°C to 155°C |
| Class of magnetic shield | Metal Alloy |
| Absolute maximum voltage | 50Vdc |
| Brand | Murata |
| Series | DFEH10040D |

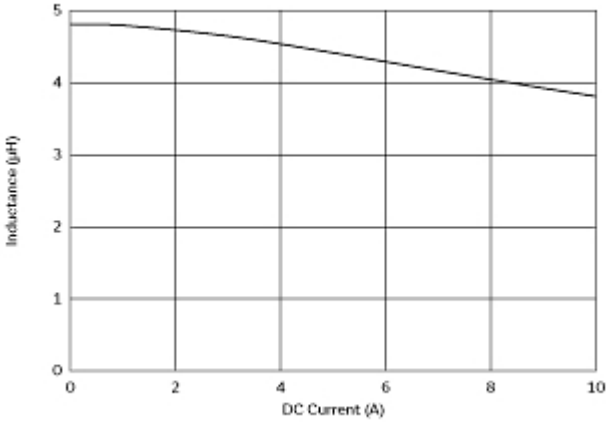
Attention

- 1.This datasheet is downloaded from the website of Murata Manufacturing Co., Ltd. Therefore, it's specifications are subject to change or our products in it may be discontinued without advance notice. Please check with our sales representatives or product engineers before ordering.
- 2.This datasheet has only typical specifications because there is no space for detailed specifications. Therefore, please review our product specifications or consult the approval sheet for product specifications before ordering.

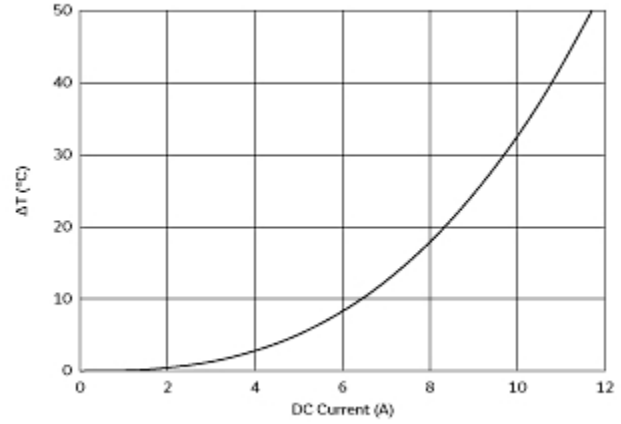
DFEH10040D-4R7M#

"#" indicates a package specification code.

Characteristic Data



Impedance - Current Characteristics



Temperature Increase Characteristic

Attention

- 1.This datasheet is downloaded from the website of Murata Manufacturing Co., Ltd. Therefore, it's specifications are subject to change or our products in it may be discontinued without advance notice. Please check with our sales representatives or product engineers before ordering.
- 2.This datasheet has only typical specifications because there is no space for detailed specifications. Therefore, please review our product specifications or consult the approval sheet for product specifications before ordering.

DFEH10040D-4R7M#

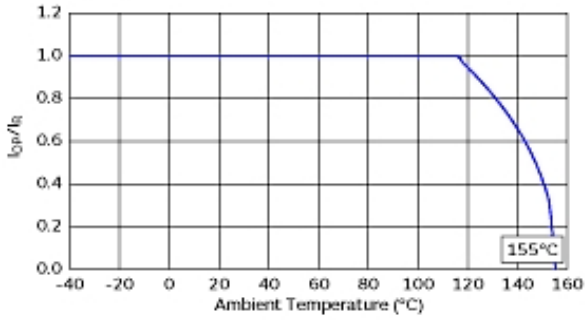
“#” indicates a package specification code.



Notice For General

Max. current (DC, AC) as function of ambient temperature (derating curve).

Derating of Rated Current



Attention

- 1.This datasheet is downloaded from the website of Murata Manufacturing Co., Ltd. Therefore, it's specifications are subject to change or our products in it may be discontinued without advance notice. Please check with our sales representatives or product engineers before ordering.
- 2.This datasheet has only typical specifications because there is no space for detailed specifications. Therefore, please review our product specifications or consult the approval sheet for product specifications before ordering.