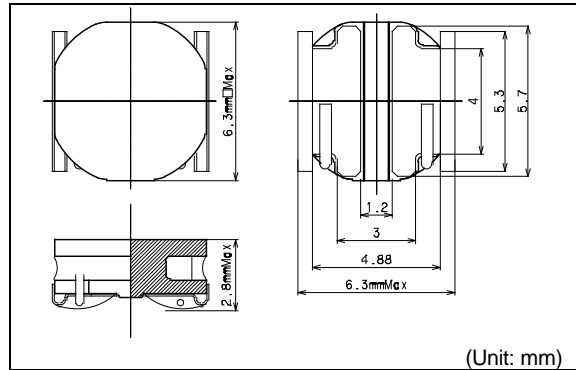
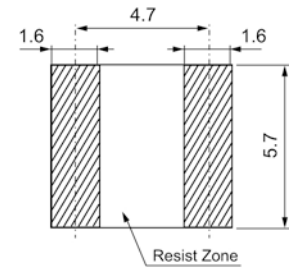


# DG6028C

**Inductance Range:** 1.0~22 $\mu$ H

**Recommended patterns  
推荐焊盘尺寸**


(Unit: mm)

**FEATURES 特点**

- Low Profile (H=2.8mm Max).
- Magnetic Shield.
- Ideal for a variety of DC-DC converter inductor applications.
- RoHS compliant
- 小型薄型构造 (高度2.8mm max.)
- 闭磁路构造
- 最适用于各种设备的DC-DC Converter 中
- 符合RoHS指令

**STANDARD PART NUMBERS 标准零件号码**
**TYPE DG6028C (Quantity/reel; 1500 PCS)**

零件号码	电感值	公差	测试频率	直流电阻	最大允许直流电流(典型)	
Part Number	Inductance L( $\mu$ H)	Tolerance (%)	Test Frequency (kHz)	DC Resistance (m $\Omega$ ) $\pm$ 20%	Rated DC Current (A) Max. (Typ.)	
					$\Delta$ L/L=30%	$\Delta$ T=40[°C]
1253AY-1R0N=P3	1.0	$\pm$ 30	100	12	5.3 (7.1)	5.8 (6.8)
1253AY-1R5N=P3	1.5	$\pm$ 30	100	16	4.4 (5.9)	5.4 (6.4)
1253AY-2R2N=P3	2.2	$\pm$ 30	100	20	4.0 (5.3)	4.8 (5.6)
1253AY-3R3N=P3	3.3	$\pm$ 30	100	28	2.9 (3.9)	4.0 (4.7)
1253AY-4R7M=P3	4.7	$\pm$ 20	100	34	2.6 (3.5)	3.6 (4.2)
1253AY-6R8M=P3	6.8	$\pm$ 20	100	47	2.3 (3.1)	3.1 (3.6)
1253AY-100M=P3	10	$\pm$ 20	100	67	1.9 (2.5)	2.5 (2.9)
1253AY-150M=P3	15	$\pm$ 20	100	94	1.5 (2.0)	2.0 (2.3)
1253AY-220M=P3	22	$\pm$ 20	100	145	1.3 (1.7)	1.7 (2.0)

(1) Inductance is measured with a LCR meter 4284A (Agilent Technologies) or equivalent.

Test frequency at 100kHz

(2) DC resistance is measured with 34420A (Agilent Technologies) or 3541(HIOKI). (Reference ambient temperature 25°C)

(3) Maximum allowable DC current is that which causes a 30% inductance reduction from the initial value, or coil temperature to rise by 40°C, whichever is smaller. (Reference ambient temperature 20°C)

(1) LCR仪表4284A (Agilent技术)或者功能相同的仪器在100kHz下测试电感值。

(2) 通过数码万用表34420A (Agilent技术) 或者3541(HIOKI)测试直流电阻。(环境温度为25°C)

(3) 允许最大直流电的范围是以下两者中比较小的一个: 引起电感值从最初值降低30%, 或者线圈温度升高40°C。(参考周围环境温度20°C) 。