

# LQM2HPZ2R2MJ0#

“#” indicates a package specification code.

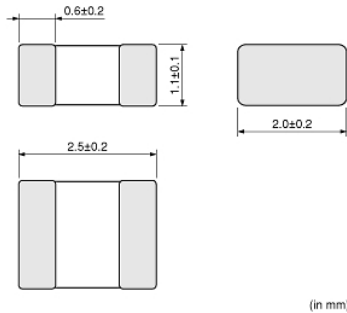
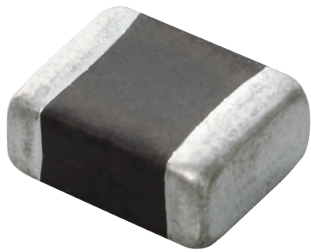
Size Code 2520 (1008) in mm (in inch), 1.2mm max. Thickness



< List of part numbers with package codes >

LQM2HPZ2R2MJ0B      LQM2HPZ2R2MJ0L

## Appearance & Shape



## References

Packaging	Specifications	Standard Packing Quantity
B	Bulk(Bag)	1000
L	180Embossed Tape	3000

Mass (typ.)	
1 piece	0.027g

## Notices

Please consider 'Notice (Rating).' When rated current is applied to the products, the temperature rise caused by self-generated heat shall be limited to 40°C max.

### Attention

- 1.This datasheet is downloaded from the website of Murata Manufacturing Co., Ltd. Therefore, it's specifications are subject to change or our products in it may be discontinued without advance notice. Please check with our sales representatives or product engineers before ordering.
- 2.This datasheet has only typical specifications because there is no space for detailed specifications. Therefore, please review our product specifications or consult the approval sheet for product specifications before ordering.

# LQM2HPZ2R2MJ0#

“#” indicates a package specification code.

## Specifications

L size	2.5±0.2mm
W size	2.0±0.2mm
T size	1.1±0.1mm
Size code inch (mm)	1008 (2520)
Inductance	2.2μH±20%
Inductance Test Frequency	1MHz
Rated current (Itemp) (Based on Temperature rise)	1A(Ambient temp.85°C)0.75A (Ambient temp.125°C)
Max. of DC resistance	0.15Ω
Class of magnetic shield	Ferrite Core
Self resonance frequency (min.)	40MHz
Brand	Murata
DC Resistance Intermediate Values	0.12Ω±25%
Operating Temperature Range	-55°C to 125°C
Series	LQM2HPZ_J0

### Attention

1.This datasheet is downloaded from the website of Murata Manufacturing Co., Ltd. Therefore, it's specifications are subject to change or our products in it may be discontinued without advance notice. Please check with our sales representatives or product engineers before ordering.

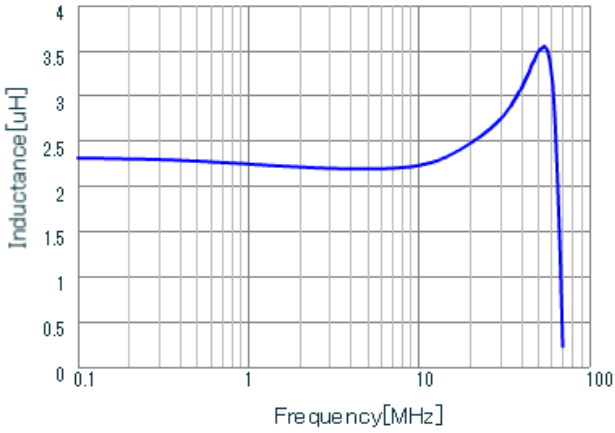
2.This datasheet has only typical specifications because there is no space for detailed specifications.

Therefore, please review our product specifications or consult the approval sheet for product specifications before ordering.

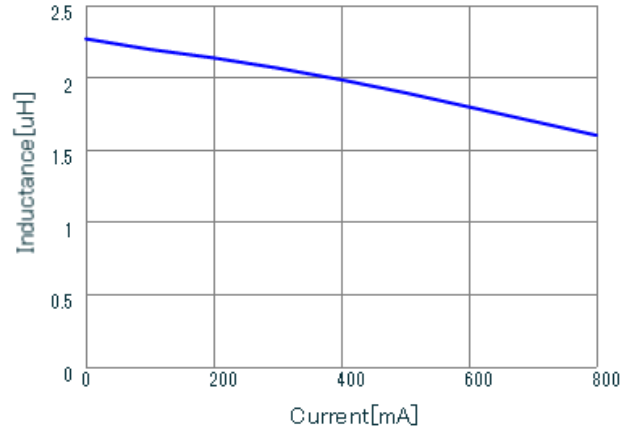
# LQM2HPZ2R2MJ0#

“#” indicates a package specification code.

## Characteristic Data



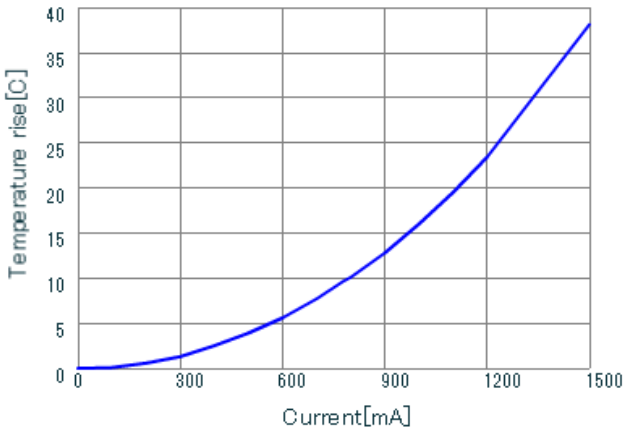
LQM2HPZ2R2MJ0 L



LQM2HPZ2R2MJ0 DC-Bias, 20

### Inductance - Frequency Characteristics

### Impedance - Current Characteristics



LQM2HPZ2R2MJ0 DT\_Current

### Temperature Increase Characteristic

**Attention**

- 1.This datasheet is downloaded from the website of Murata Manufacturing Co., Ltd. Therefore, it's specifications are subject to change or our products in it may be discontinued without advance notice. Please check with our sales representatives or product engineers before ordering.
- 2.This datasheet has only typical specifications because there is no space for detailed specifications. Therefore, please review our product specifications or consult the approval sheet for product specifications before ordering.

# LQM2HPZ2R2MJ0#

"#" indicates a package specification code.

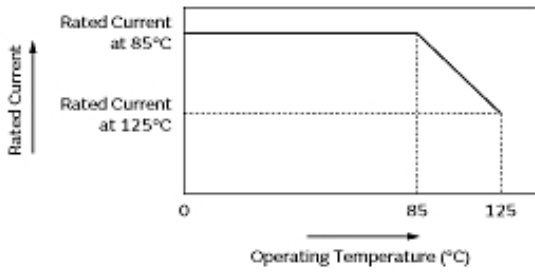


## Notice For General

In operating temperatures exceeding +85°C, derating of current is necessary for this series.

Please apply the derating curve shown in the chart according to the operating temperature.

### Derating of Rated Current



### Attention

- 1.This datasheet is downloaded from the website of Murata Manufacturing Co., Ltd. Therefore, it's specifications are subject to change or our products in it may be discontinued without advance notice. Please check with our sales representatives or product engineers before ordering.
- 2.This datasheet has only typical specifications because there is no space for detailed specifications. Therefore, please review our product specifications or consult the approval sheet for product specifications before ordering.