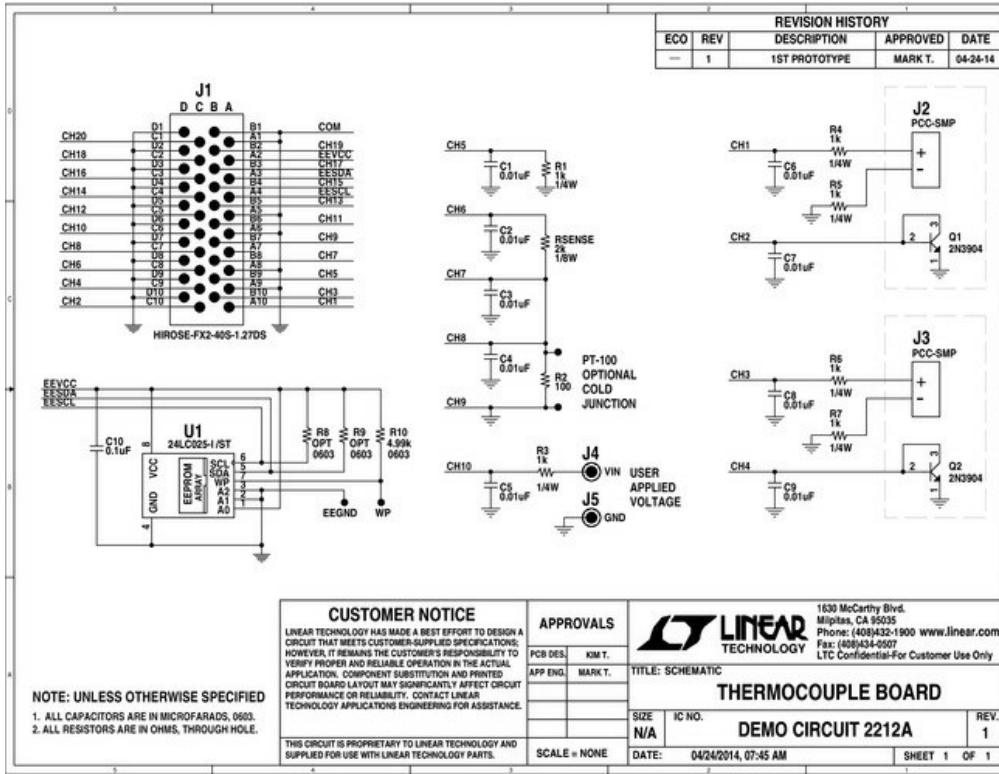


Solutions > Monitor, Control and Protection > Temperature Monitors

DC2212A - LTC2983/84/86 Thermocouple Board (req. DC2296, DC2420 or DC2531)



CUSTOMER NOTICE

LINEAR TECHNOLOGY HAS MADE A BEST EFFORT TO DESIGN A CIRCUIT THAT MEETS CUSTOMER-SUPPLIED SPECIFICATIONS. HOWEVER, IT REMAINS THE CUSTOMER'S RESPONSIBILITY TO VERIFY PROPER AND RELIABLE OPERATION IN THE ACTUAL APPLICATION. COMPONENT SUBSTITUTION AND PRINTED CIRCUIT BOARD LAYOUT MAY SIGNIFICANTLY AFFECT CIRCUIT PERFORMANCE OR RELIABILITY. CONTACT LINEAR TECHNOLOGY APPLICATIONS ENGINEERING FOR ASSISTANCE.

NOTE: UNLESS OTHERWISE SPECIFIED

1. ALL CAPACITORS ARE IN MICROFARADS, 0603.
2. ALL RESISTORS ARE IN OHMS, THROUGH HOLE.

THIS CIRCUIT IS PROPRIETARY TO LINEAR TECHNOLOGY AND SUPPLIED FOR USE WITH LINEAR TECHNOLOGY PARTS.

APPROVALS

PCB DES. KIM T.
APP ENG. MARK T.

SCALE = NONE

1630 McCarthy Blvd.
Milpitas, CA 95035
Phone: (408)432-1900 www.linear.com
Fax: (408)434-0507
LTC Confidential-For Customer Use Only

TITLE: SCHEMATIC

THERMOCOUPLE BOARD

SIZE N/A IC NO. DEMO CIRCUIT 2212A REV. 1

DATE: 04/24/2014, 07:45 AM SHEET 1 OF 1

ORDER NOW

BUY

DOCUMENTATION

- Demo Board Design File
 - [DC2212A - Design Files](#)
- Demo Board Schematic
 - [DC2212A - Schematic](#)