

GJM1555C1H2R4WB01#

“#” indicates a package specification code.



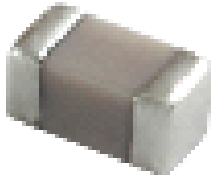
< List of part numbers with package codes >

GJM1555C1H2R4WB01D

GJM1555C1H2R4WB01W

GJM1555C1H2R4WB01J

Appearance & Shape



References

Packaging	Specifications	Standard Packing Quantity
D	180mm Paper Tape	10000
W	180mm Paper Tape (W8P1)	20000
J	330mm Paper Tape	50000

Mass (typ.)	
1 piece	1.6mg
φ180mm Reel	118g

Attention

- 1.This datasheet is downloaded from the website of Murata Manufacturing Co., Ltd. Therefore, it's specifications are subject to change or our products in it may be discontinued without advance notice. Please check with our sales representatives or product engineers before ordering.
- 2.This datasheet has only typical specifications because there is no space for detailed specifications.
Therefore, please review our product specifications or consult the approval sheet for product specifications before ordering.

GJM1555C1H2R4WB01#

“#” indicates a package specification code.



Specifications

Length	1.0±0.05mm
Width	0.5±0.05mm
Thickness	0.5±0.05mm
Capacitance	2.4pF ±0.05pF
Distance between external terminals g	0.3mm min.
External terminal size e	0.15 to 0.35mm
Operating Temperature Range	-55°C to 125°C
Rated Voltage	50Vdc
Size code in inch(mm)	0402 (1005M)
TC	0±30ppm/°C
Temperature characteristics (complied standard)	C0G(EIA)
Temperature range of temperature characteristics	25°C to 125°C

Attention

- 1.This datasheet is downloaded from the website of Murata Manufacturing Co., Ltd. Therefore, it's specifications are subject to change or our products in it may be discontinued without advance notice. Please check with our sales representatives or product engineers before ordering.
- 2.This datasheet has only typical specifications because there is no space for detailed specifications.
Therefore, please review our product specifications or consult the approval sheet for product specifications before ordering.

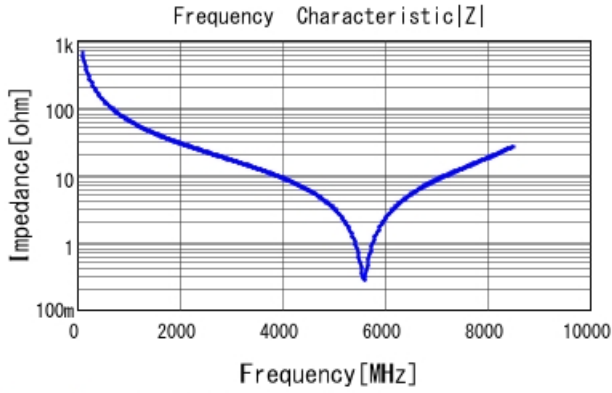
GJM1555C1H2R4WB01#

"#" indicates a package specification code.

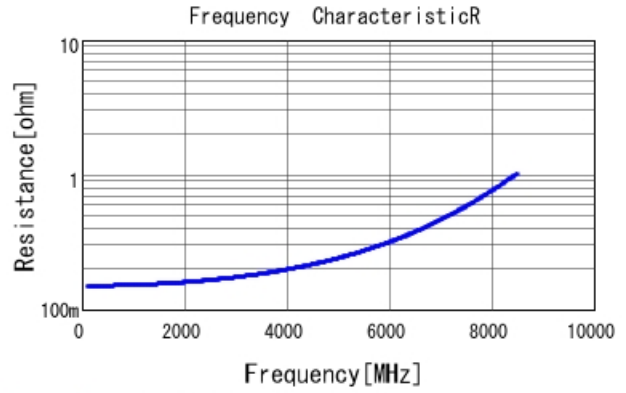


Characteristic Data

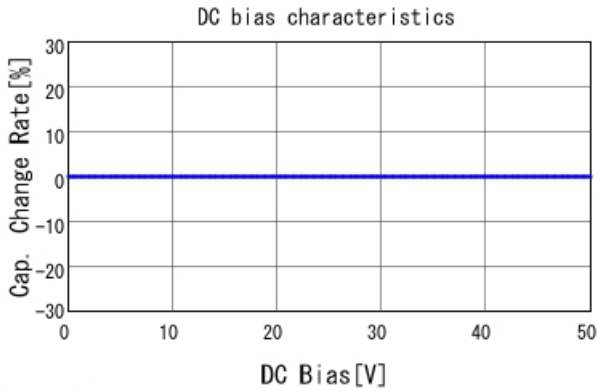
The charts below may show another part number which shares its characteristics.



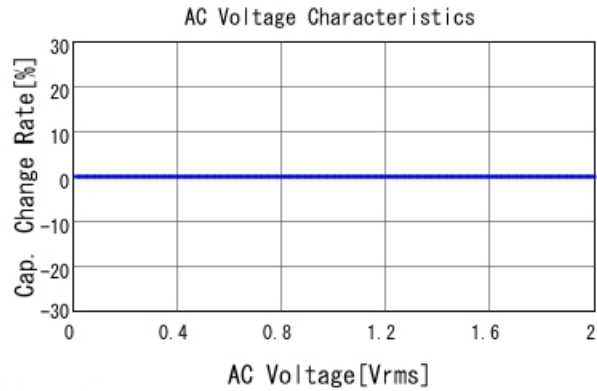
GJM1555C1H2R4WB01 |Z| DCOV, 25degC



GJM1555C1H2R4WB01 R DCOV, 25degC



GJM1555C1H2R4WB01 C-DC bias capchange, 25.0degC, A



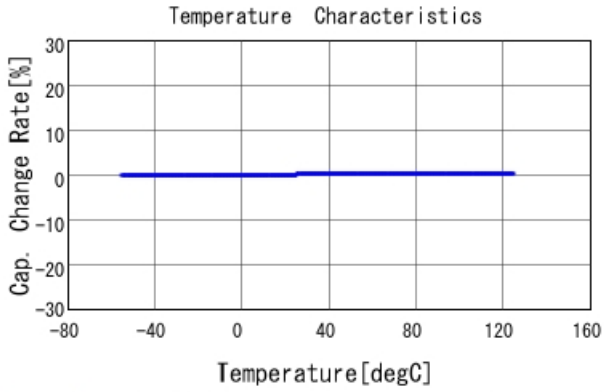
GJM1555C1H2R4WB01 C-AC Voltage capchange, DCOV, 25

Attention

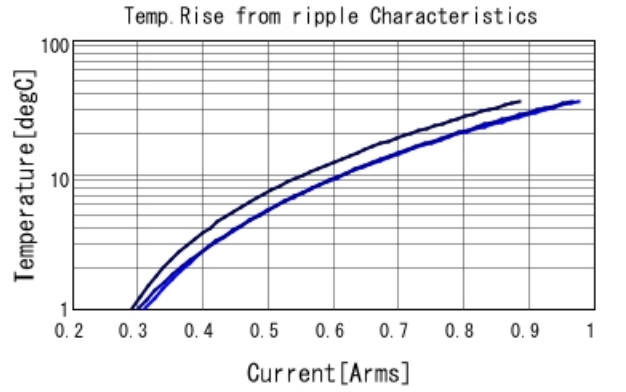
- 1.This datasheet is downloaded from the website of Murata Manufacturing Co., Ltd. Therefore, it's specifications are subject to change or our products in it may be discontinued without advance notice. Please check with our sales representatives or product engineers before ordering.
- 2.This datasheet has only typical specifications because there is no space for detailed specifications. Therefore, please review our product specifications or consult the approval sheet for product specifications before ordering.

GJM1555C1H2R4WB01#

“#” indicates a package specification code.



GJM1555C1H2R4WB01 C-Temp. capchange, DCOV, AC1Vrms



GJM1555C1H2R4WB01 Temp. rise — 1GHz — 2GHz

Attention

- 1.This datasheet is downloaded from the website of Murata Manufacturing Co., Ltd. Therefore, it's specifications are subject to change or our products in it may be discontinued without advance notice. Please check with our sales representatives or product engineers before ordering.
- 2.This datasheet has only typical specifications because there is no space for detailed specifications. Therefore, please review our product specifications or consult the approval sheet for product specifications before ordering.